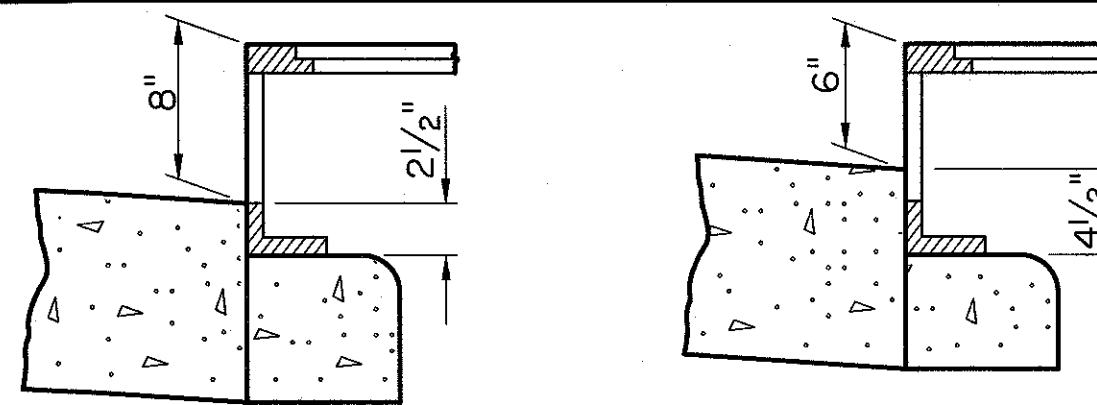


GENERAL NOTES:

1. THIS STRUCTURE MEETS ALL DOTD HYDRAULIC PERFORMANCE CRITERIA WHEN USED IN ACCORDANCE WITH THE DOTD HYDRAULICS MANUAL AND ALL DOTD HYDRAULIC DESIGN POLICIES.
2. CONSTRUCTION SPECIFICATIONS: LATEST APPROVED LA DOTD STANDARD SPECIFICATIONS.
3. ALL EXPOSED CORNERS SHALL HAVE $\frac{3}{4}$ " CHAMFER UNLESS OTHERWISE NOTED.
4. DIMENSIONS RELATING TO REINFORCING STEEL FABRICATION ARE OUT-TO-OUT OF BARS AND DIMENSIONS RELATING TO REINFORCING STEEL SPACING ARE CENTER-TO-CENTER OF BARS.
5. REINFORCING STEEL SHALL HAVE 2" COVER UNLESS OTHERWISE SPECIFIED.
6. IF PRECAST CATCH BASIN IS USED, PLEASE REFER TO STANDARD PLAN PC-01 FOR DETAILS AND SPECIFICATIONS.
7. PAVED GUTTER DRAINS SHALL BE POURED MONOLITHICALLY.

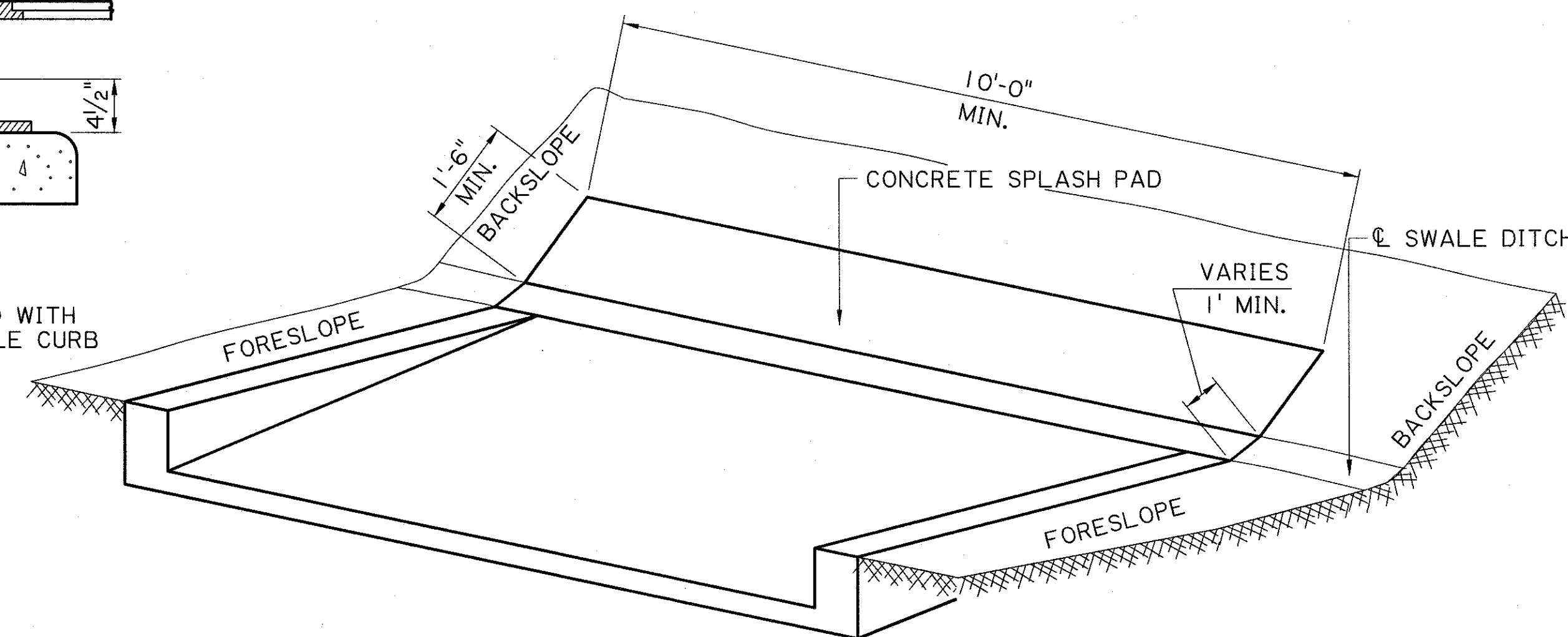


INLET CONFIGURATION

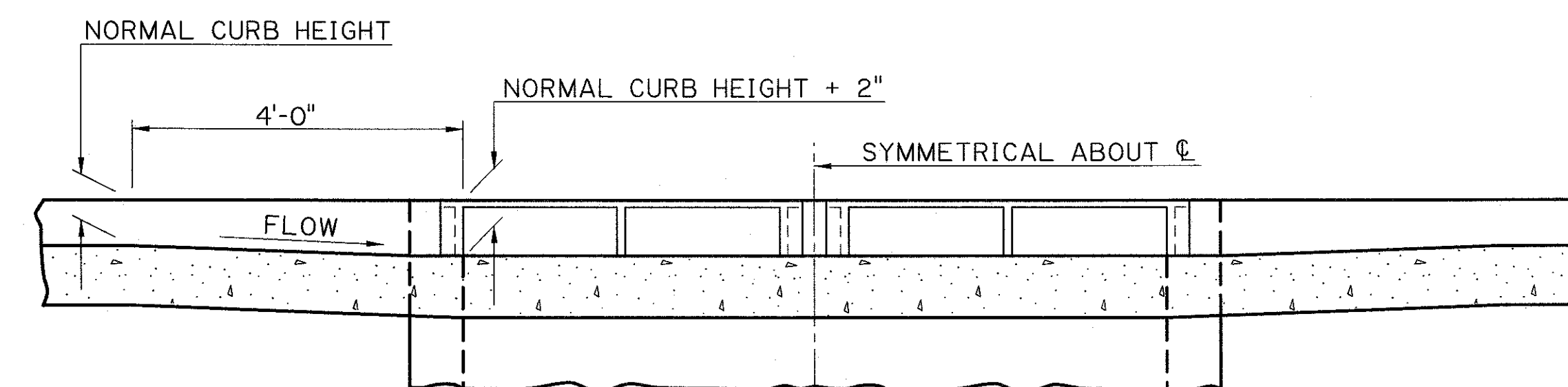
WHEN USED WITH
6" BARRIER CURB

WHEN USED WITH
4" MOUNTABLE CURB

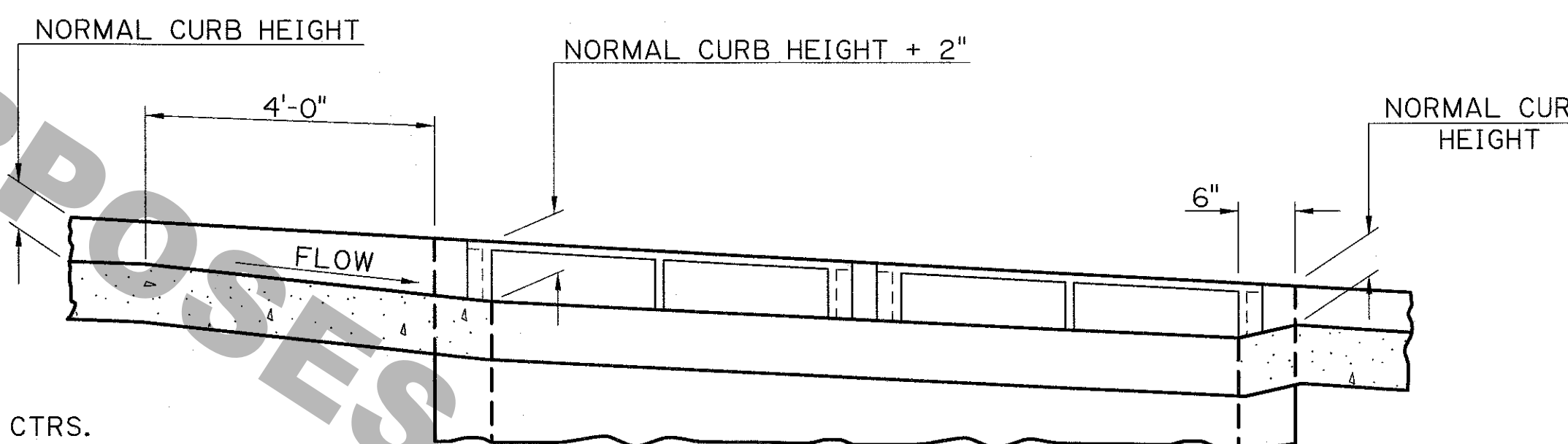
FOR GRATE AND FRAME DETAILS, SEE
APPROPRIATE CATCH BASIN STANDARD
PLAN OR SPECIAL DETAIL AND STANDARD
PLAN MC-01.



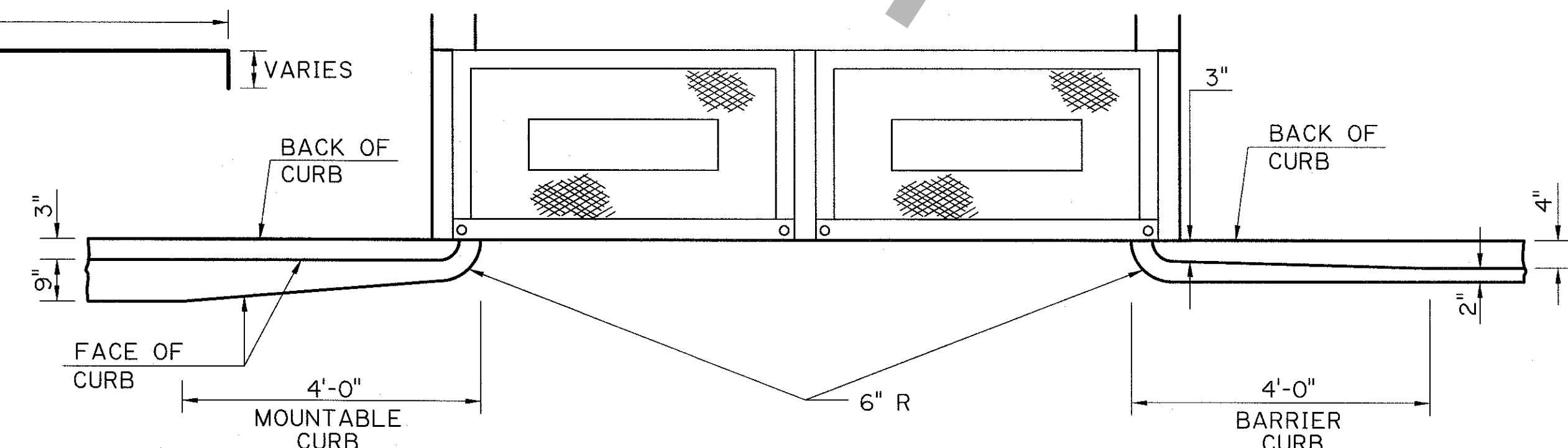
PARTIAL VIEW SHOWING PAVED GUTTER DRAIN WITHOUT DROP INLET



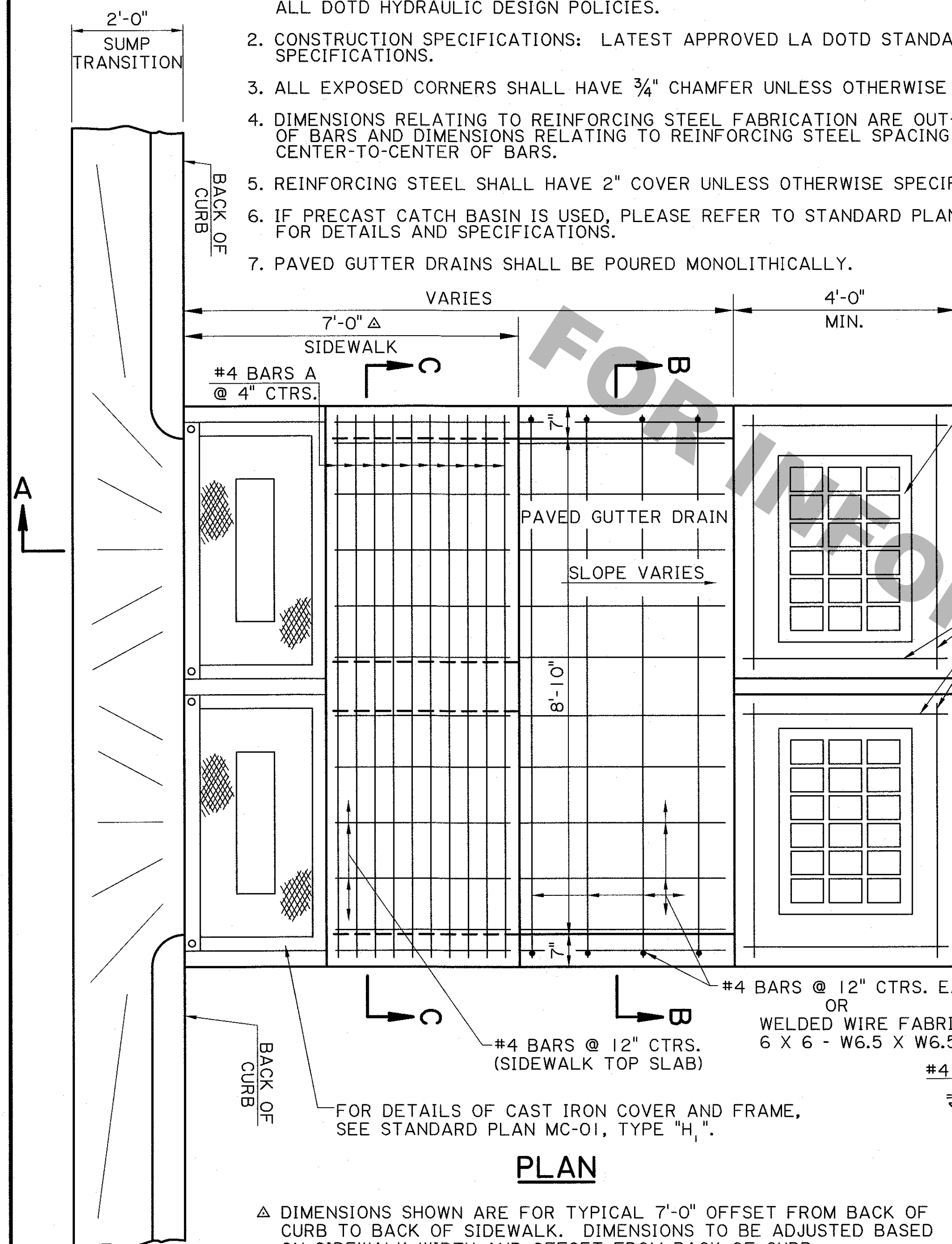
TRANSITION IN CURB HEIGHT GUTTER DRAIN AT LOW POINT



TRANSITION IN CURB HEIGHT GUTTER DRAIN ON A GRADE

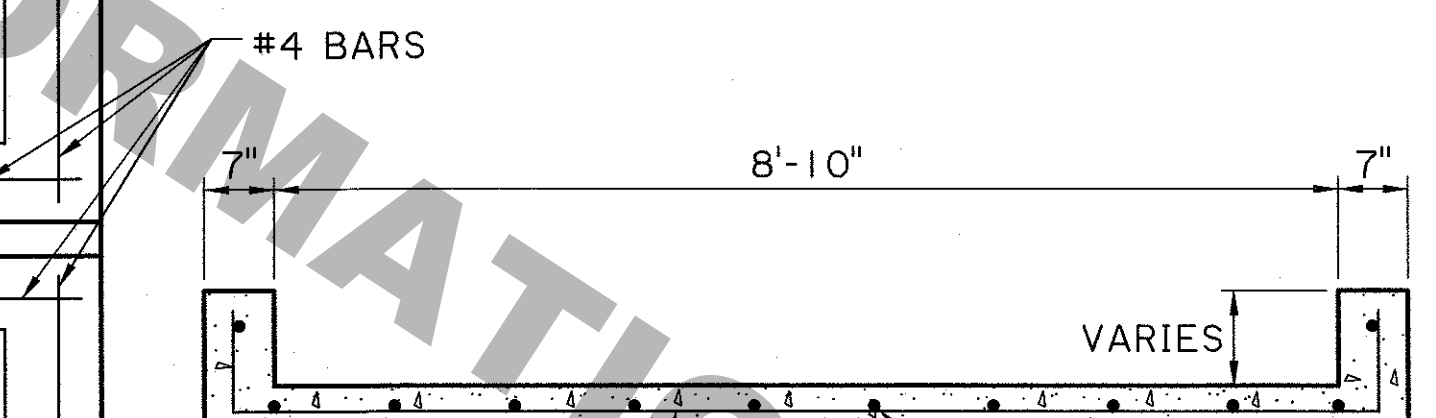


TRANSITION IN CURB WIDTH (TYPICAL)

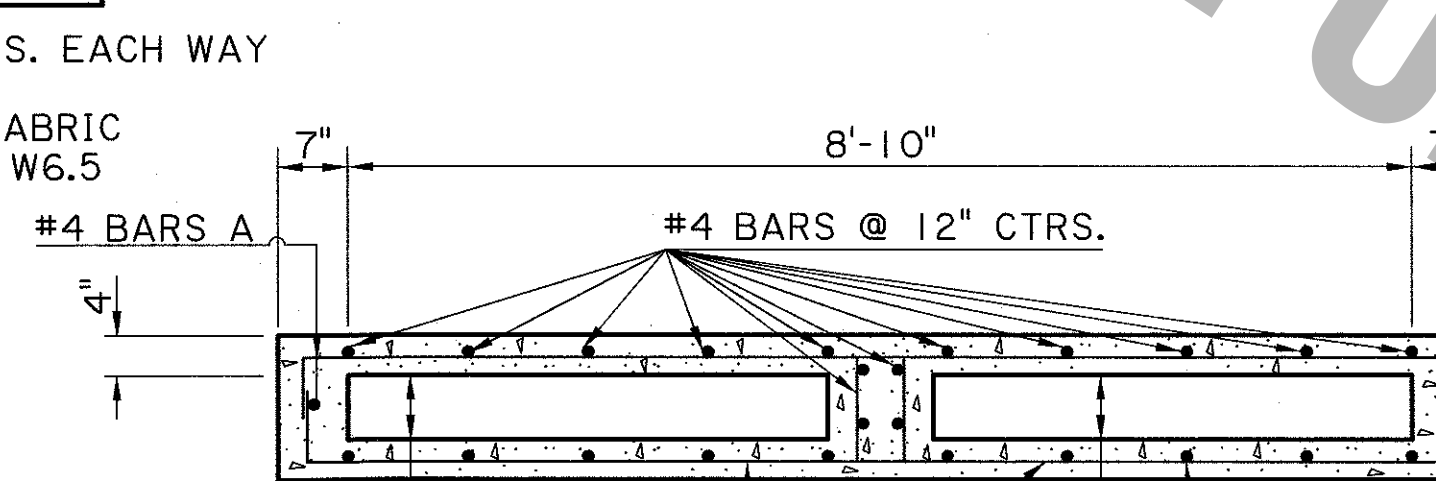


PLAN

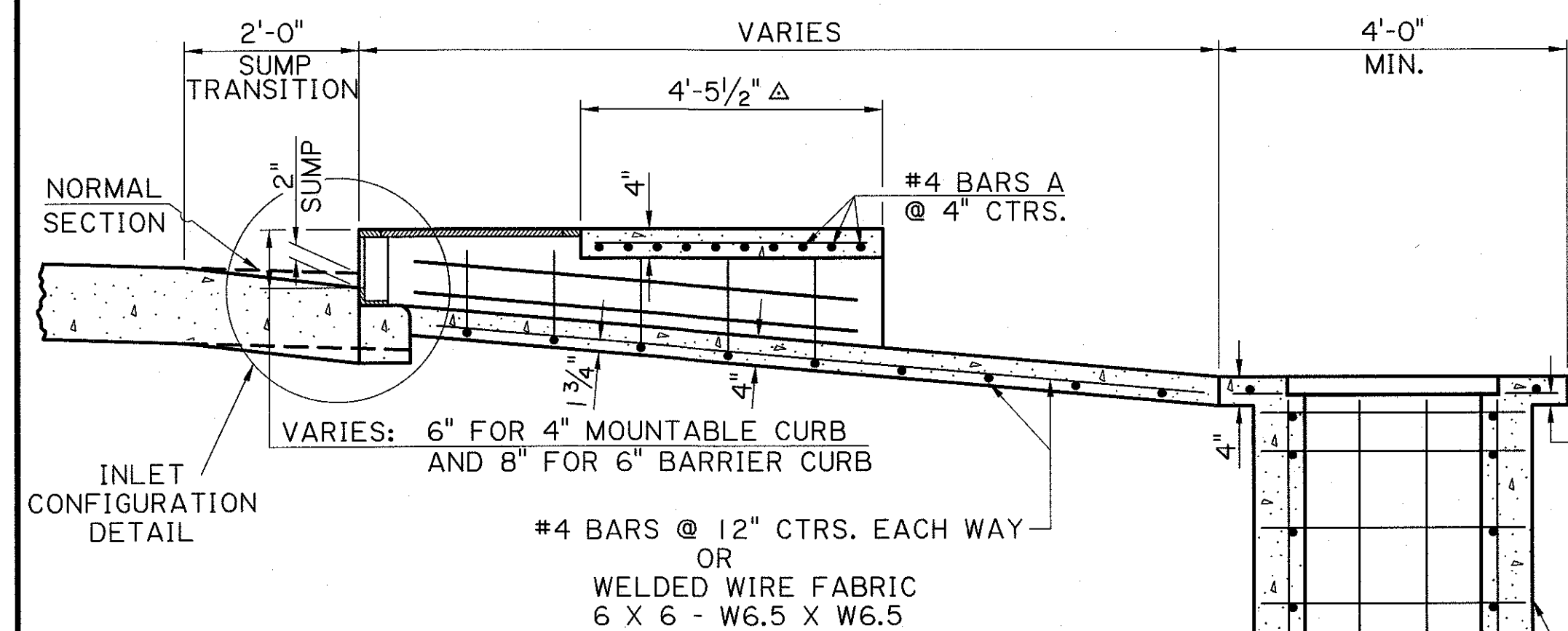
Δ DIMENSIONS SHOWN ARE FOR TYPICAL 7'-0" OFFSET FROM BACK OF CURB TO BACK OF SIDEWALK. DIMENSIONS TO BE ADJUSTED BASED ON SIDEWALK WIDTH AND OFFSET FROM BACK OF CURB.



SECTION B-B



SECTION C-C



SECTION A-A

CB-01 OR OTHER DROP INLET
SEE APPROPRIATE STANDARD
PLAN OR SPECIAL DETAIL

SHEET NUMBER		DATE	
PARTIAL	CONTROL SECTION	STATE	PROJECT
DESIGN	CHECK	DETAIL	CHECK
REVIEW	REVIEW	REVIEW	REVIEW

STATE OF LOUISIANA

MITRA HASHEMIEH
REG. No. 28546
REGISTERED PROFESSIONAL ENGINEER
IN CIVIL ENGINEERING
9/11/2020

STATE OF LOUISIANA

ADAM LANCASTER
REG. No. 55573
REGISTERED PROFESSIONAL ENGINEER
IN CIVIL ENGINEERING
9/10/2020

STRUCTURAL

APPROVED BY CHIEF ENGINEER:
Charles P. Harty
DATE: 9/22/2020

STATE OF LOUISIANA

DOUBLE PAVED GUTTER DRAIN WITH SIDEWALK
PG-DRAIN WITH SIDEWALK (DOUBLE)

DOTD
LOUISIANA DEPARTMENT OF TRANSPORTATION & DEVELOPMENT
HYDRAULICS SECTION