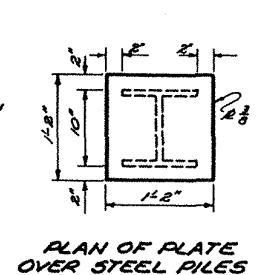
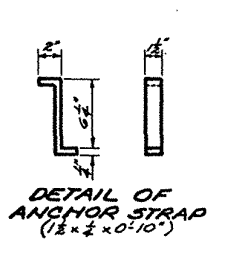


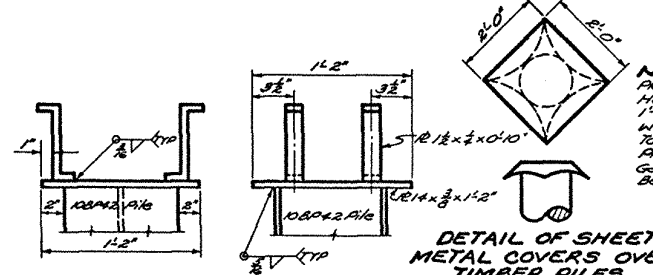
PART ELEVATION



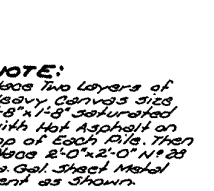
PLAN OF PLATE OVER STEEL PILES



DETAIL OF ANCHOR STRAP (1.2" x 0.10")



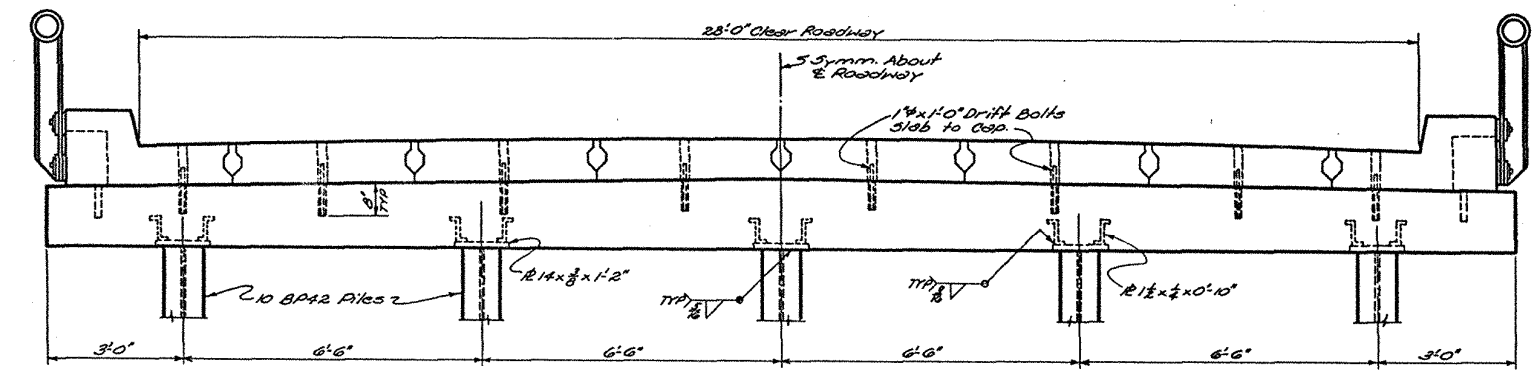
DETAILS SHOWING CONNECTIONS OF STRAPS, PLATE AND PILE



DETAIL OF SHEET METAL COVERS OVER TIMBER PILES

BRACING-TYPE & QUANTITIES

GROUND TO GRADE "H"	FEET	TYPE	FAB CARBON STEEL LBS.
0 THRU 12		NONE	
13 THRU 19	13, 15, 19	A	802, 813, 838
20 THRU 30	20, 25, 30	B	1603, 1626, 1669



SECTION THRU ROADWAY AT BENT

BILL OF MATERIALS FOR ONE PRECAST CAP

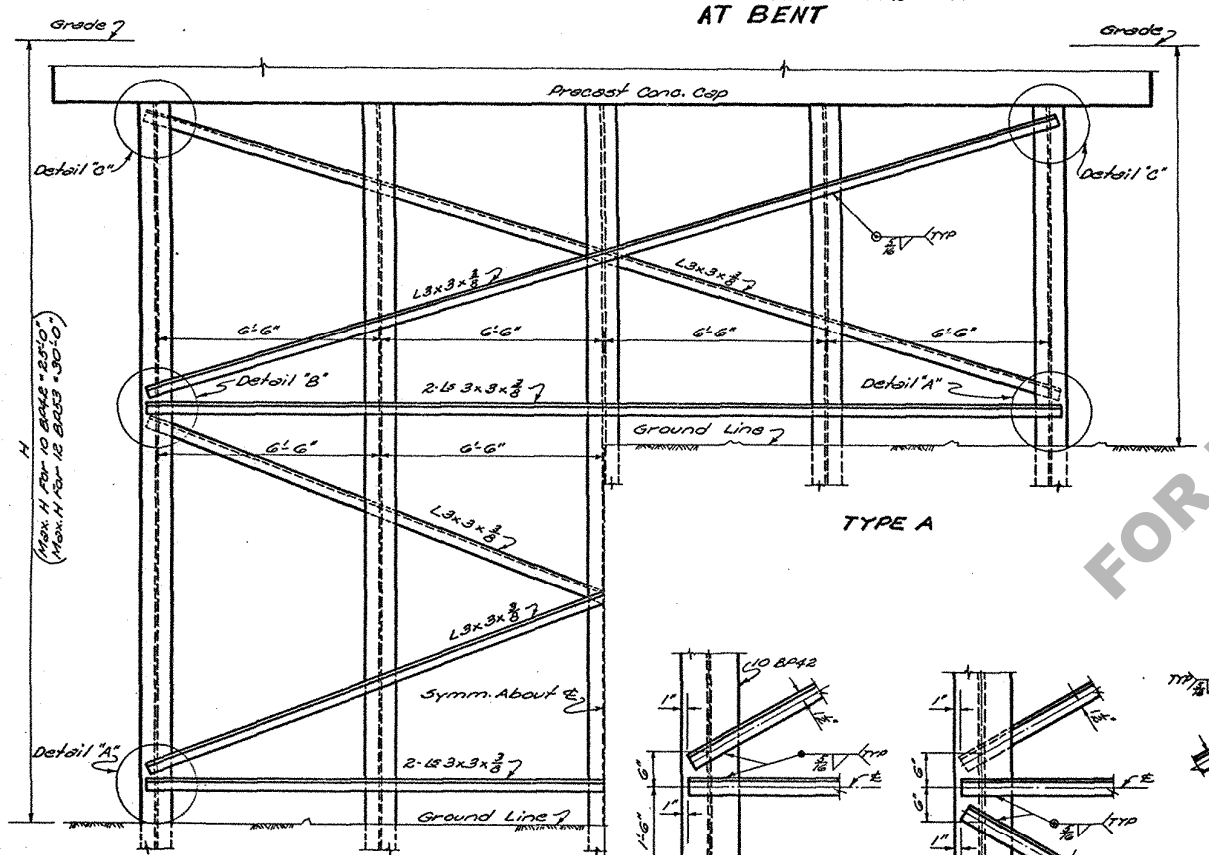
BAR	SIZE	N ^o	LENGTH	TOTAL LENGTH	LOCATION
A	#7	8	31'-6"	253'-4"	Long. Top & Bottom
TOTAL #7 BARS = 253'-4" = 518 LBS.					
B	#4	2	31'-6"	63'-4"	Long. Center
TOTAL #4 BARS = 63'-4" = 42 LBS.					
S	#3	34	4'-0"	138'-0"	Stirrups in Cap.
TOTAL #3 BARS = 138'-0" = 58 LBS.					
TOTAL REINFORCING STEEL = 618 LBS.					
TOTAL CLASS "X" CONCRETE = 2.22 CU. YDS.					
TOTAL FABRICATED CARBON STEEL = 126 LBS.					

BILL OF MATERIALS FOR ONE BENT

DESCRIPTION	N ^o OF PIECES REQD FOR END BENT	INTER. BENT
Precast Conc. Cap	1	1
10 BA42 Piles	5	5
Crossed Timber Stub Piles	2	0
2'-0" x 2'-0" No. 28 Ga. Gal. Sheet Metal Covers (Hardware)	2	0
1/2" x 1/8" Heavy Gannos (2 Layers)	2	0
1/4" x 2'-6" Drift Bolts (Hardware)	2	0

NOTE: Cap Same for End and Intermediate Bents. Chamfer all Corners 1/4".
NOTE: No Direct Payment will be Made for Welds. Cost to be Included in Price Bid on other Items.

AVE. PILE LOADS:
 H. 15'-44" = 13.57 Tons
 H. 20'-44" = 15.97 Tons
 No Sway Bracing Included in Above Table.



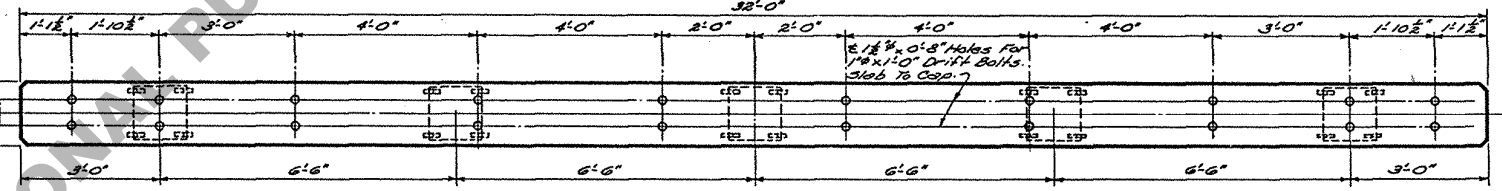
TYPE A

TYPE B

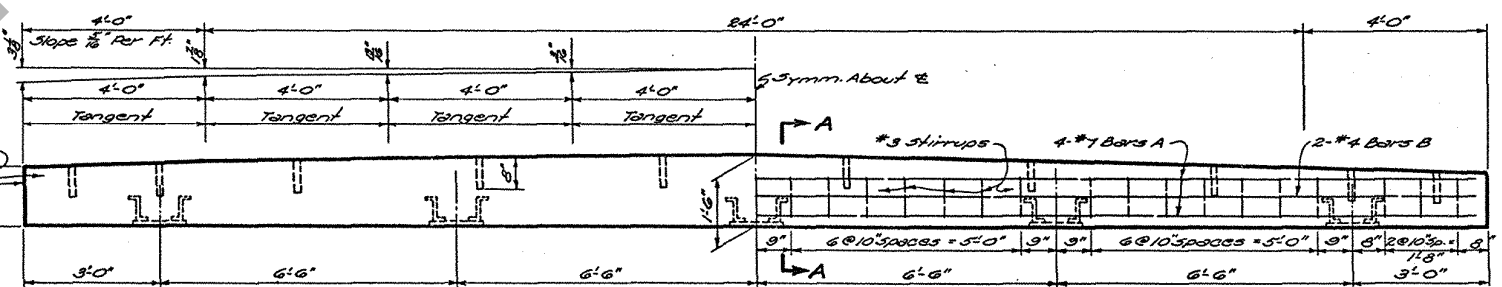
DETAIL A

DETAIL B

DETAIL C

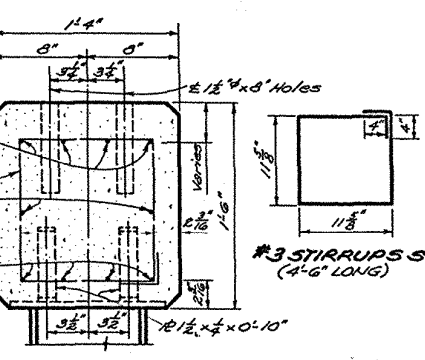


PLAN OF PRECAST CONCRETE CAP



HALF ELEVATION OF PRECAST CAP

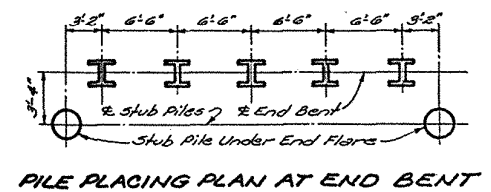
HALF ELEVATION OF PRECAST CAP (SHOWING REINFORCING BARS)



SECTION A-A

GENERAL NOTES:
 Construction Specifications: Latest Approved La. Dept. of Highways Spec. Specs.
 Design Specifications: A.A.S.H.O., 1953 as Amended to Dec. 31, 1955
 All Concrete to be Class "X".
 Reinforcing Steel shall be Intermediate or Hard Grade A.S.T.M. A15-54T or Rail Steel A.S.T.M. A13-54T, and shall conform to A.S.T.M. A305-53T.
 Dimensions Relating to Reinforcing Steel are to Bar Centers.
 Welding shall conform to the Current Specifications for Welded Highway and Railroad Bridges of the American Welding Society.
 Fabricated Carbon Steel unless noted and steel bearing Piles shall receive one Shop Coat of Paint. Surface of Piles which will be in water or ground shall receive the first field coat of paint.
 Exposed steel surfaces shall receive the first, second and third field coat of paint. Steel shall be spot painted after welding before applying first field coat.
 Details shown are for 10 BA42 Piles use 12BA53 as required. All hardware to be plain unless otherwise noted.

NOTE:
 Each Unit Shall Have an Identification Mark and Number Stamped in the Concrete. The Manufacturer Shall Obtain Approval of his Identification Mark and Number Series from the Testing and Research Engineer.



PILE PLACING PLAN AT END BENT

STANDARD PLAN STEEL BEARING PILE BENTS WITH PRECAST CONCRETE CAPS TO BE USED WITH STD. PLAN CFS 17-20
 DATED Feb. 15, 1958

STATE OF LOUISIANA
 DEPARTMENT OF HIGHWAYS

DESIGNED	307	TRACED	307
CHECKED	307	CHECKED	307

BRIDGE DESIGN SECTION