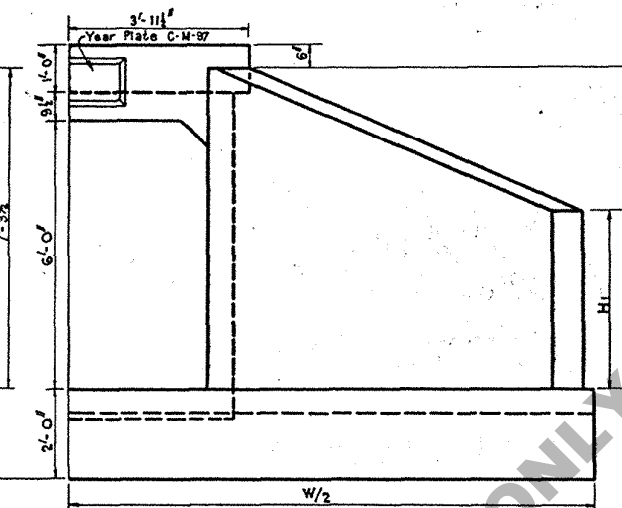
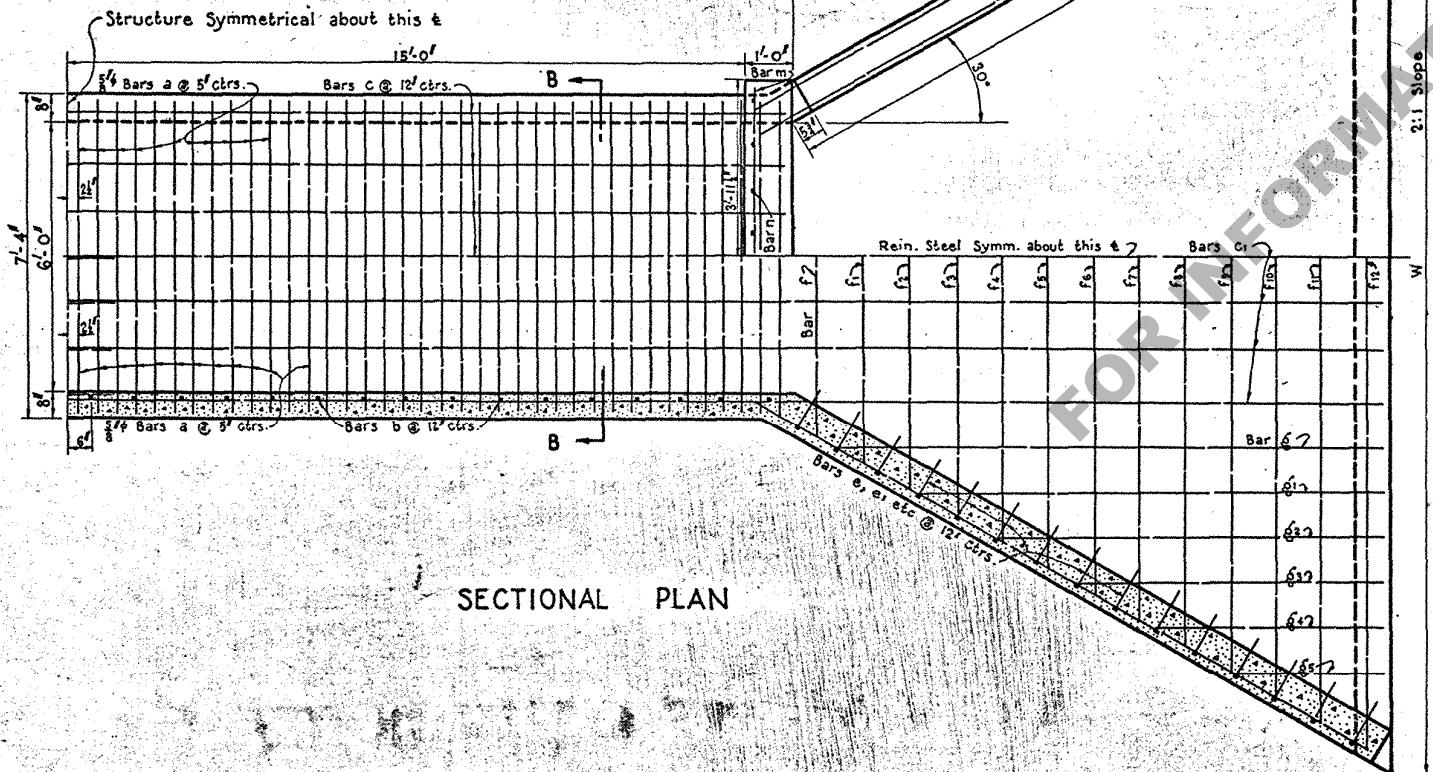


SECTION ON E

Note, Bars d, d<sub>1</sub>, d<sub>2</sub>, d<sub>3</sub>, & d<sub>4</sub> to be bent in field.

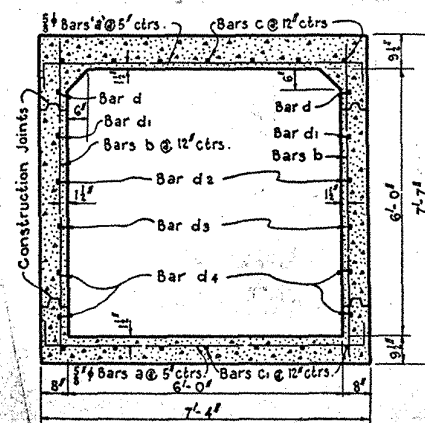
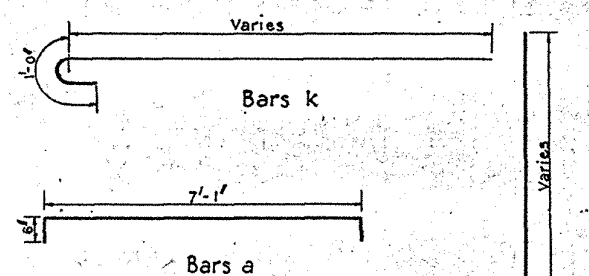


HALF END ELEVATION



SECTIONAL PLAN

**GENERAL NOTES**  
 Const. Specs: Latest approved La. Hwy. Dept. Std. Specs.  
 Design Specs: La. Hwy. Commission, 1929  
 Assumed Live Load - 2 Typical 15 ton Trucks  
 Concrete to be class A throughout  
 All reinforcing steel shall be considered as deformed bars.  
 Square twisted bars not to be considered as deformed.  
 Where splicing of bars is necessary they shall be lapped 40 diameters.  
 All exposed corners to be chamfered 1/4"  
 Place about One (1) Cu. ft. of large size gravel or loose rock behind and around each weep hole.



SECTION B-B

DIMENSIONS				
SLOPES	1 1/2 : 1	2 : 1	3 : 1	4 : 1
D			11'-9 1/2"	13'-6 3/4"
H <sub>1</sub>			3'-5"	3'-11"
L			13'-7"	15'-7 1/2"
W			21'-6"	23'-6 5/8"

BILL OF MATERIAL FOR 30' STRUCTURE

Slope	1 1/2 : 1		2 : 1		3 : 1		4 : 1	
	No.	Unit Length	No.	Unit Length	No.	Unit Length	No.	Unit Length
a	152	8'-1"	1228	8'-1"	152	8'-1"	1228	8'-1"
b	64	7'-4"	409	7'-4"	64	7'-4"	409	7'-4"
c	7	31'-9"	222	31'-9"	7	31'-9"	222	31'-9"
d	14	28'-8"	401	28'-8"	14	30'-5"	425	30'-5"
d <sub>1</sub>	4	22'-8"	30	22'-8"	4	24'-9"	99	24'-9"
d <sub>2</sub>	4	22'-1"	104	22'-1"	4	23'-3"	117	23'-3"
d <sub>3</sub>	4	23'-6"	118	23'-6"	4	32'-3"	129	32'-3"
d <sub>4</sub>	4	30'-2"	120	30'-2"	4	32'-3"	129	32'-3"
e	8	30'-2"	241	30'-2"	8	32'-3"	258	32'-3"
e <sub>1</sub>	4	8'-4"	33	8'-4"	4	8'-4"	33	8'-4"
e <sub>2</sub>	4	8'-1"	32	8'-1"	4	8'-2"	32	8'-2"
e <sub>3</sub>	4	7'-3"	31	7'-3"	4	7'-11"	31	7'-11"
e <sub>4</sub>	4	7'-6"	30	7'-6"	4	7'-9"	31	7'-9"
e <sub>5</sub>	4	7'-3"	29	7'-3"	4	7'-6"	30	7'-6"
e <sub>6</sub>	4	6'-11"	27	6'-11"	4	7'-4"	29	7'-4"
e <sub>7</sub>	4	6'-8"	26	6'-8"	4	7'-11"	28	7'-11"
e <sub>8</sub>	4	6'-4"	25	6'-4"	4	6'-11"	27	6'-11"
e <sub>9</sub>	4	6'-1"	24	6'-1"	4	6'-8"	26	6'-8"
e <sub>10</sub>	4	5'-9"	23	5'-9"	4	6'-6"	26	6'-6"
e <sub>11</sub>	4	5'-6"	22	5'-6"	4	6'-3"	25	6'-3"
e <sub>12</sub>	4	5'-2 1/2"	20	5'-2 1/2"	4	6'-1"	24	6'-1"
e <sub>13</sub>	4	4'-11 1/2"	19	4'-11 1/2"	4	5'-10"	23	5'-10"
e <sub>14</sub>	4	4'-8"	18	4'-8"	4	5'-8"	22	5'-8"
e <sub>15</sub>					4	5'-5 1/2"	21	5'-5 1/2"
e <sub>16</sub>					4	5'-3"	21	5'-3"
f	2	7'-11"	15	7'-11"	2	8'-4"	16	8'-4"
f <sub>1</sub>	2	9'-1"	18	9'-1"	2	9'-6"	19	9'-6"
f <sub>2</sub>	2	10'-3"	20	10'-3"	2	10'-8"	21	10'-8"
f <sub>3</sub>	2	11'-5"	22	11'-5"	2	11'-10"	23	11'-10"
f <sub>4</sub>	2	12'-7"	25	12'-7"	2	13'-0"	26	13'-0"
f <sub>5</sub>	2	13'-9"	27	13'-9"	2	14'-2"	28	14'-2"
f <sub>6</sub>	2	14'-11"	29	14'-11"	2	15'-4"	30	15'-4"
f <sub>7</sub>	2	16'-1"	32	16'-1"	2	16'-6"	33	16'-6"
f <sub>8</sub>	2	17'-3"	34	17'-3"	2	17'-8"	35	17'-8"
f <sub>9</sub>	2	18'-5"	36	18'-5"	2	18'-10"	37	18'-10"
f <sub>10</sub>	2	19'-7"	39	19'-7"	2	20'-0"	40	20'-0"
f <sub>11</sub>	2	20'-9"	41	20'-9"	2	21'-2"	42	21'-2"
f <sub>12</sub>					2	22'-4"	44	22'-4"
f <sub>13</sub>								
f <sub>14</sub>								
g	4	11'-2"	44	11'-2"	4	12'-11"	51	12'-11"
g <sub>1</sub>	4	9'-5"	37	9'-5"	4	11'-2"	44	11'-2"
g <sub>2</sub>	4	7'-8"	30	7'-8"	4	9'-5"	37	9'-5"
g <sub>3</sub>	4	5'-11"	23	5'-11"	4	7'-8"	30	7'-8"
g <sub>4</sub>	4	4'-2"	16	4'-2"	4	5'-11"	23	5'-11"
g <sub>5</sub>	4	2'-5"	9	2'-5"	4	4'-2"	16	4'-2"
g <sub>6</sub>					4	2'-5"	9	2'-5"
k	8	15'-0"	120	15'-0"	8	16'-11"	135	16'-11"
m	2	7'-8"	15	7'-8"	2	7'-8"	15	7'-8"
n	16	1'-6"	24	1'-6"	16	1'-6"	24	1'-6"
5/8" Total			1228				1228	
1/2" Total			2733				2733	

QUANTITIES				
Slopes	1 1/2 : 1	2 : 1	3 : 1	4 : 1
Concrete - Total Cu. Yds.			41.25	44.72
Concrete - Per Lin. Ft. Barrel			.7356	.7356
Def. Reinf. Steel Total Lbs.			3661	3894
" " " Per Lin. Ft. Barrel			75.03	75.03

\*Allows for 2'-0" Lap Splices  
 Discard 9/18/57 see std. Plan CC 35-15 A4

Note: Bars Are To Be 1/8" Except As Noted

STANDARD PLAN  
 6'x6' R.C. BOX CULVERT  
 SLOPES FROM 1 1/2 : 1 TO 4 : 1  
 FOR MAXIMUM FILL OF 12 FT.

STATE OF LOUISIANA					
DEPARTMENT OF HIGHWAYS					
DESIGNED	T. B. S.	CHECKED	T. B. S.	TRACED	M. I. H.
CHECKED	Q. A. H.	CHECKED	Q. A. H.	CHECKED	Q. A. H.
DATE	DESCRIPTION	BY	DATE	DESCRIPTION	BY
	REVISIONS			REVISIONS	