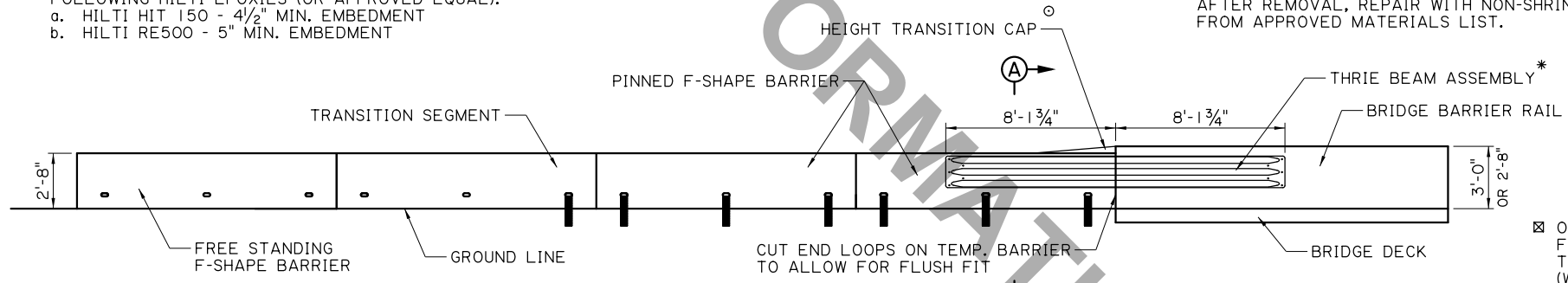


○ HEIGHT TRANSITION CAP ONLY REQ. WHEN CONNECTING TO BRIDGE RAILS TALLER THAN 2'-8". ATTACH TO TOP OF BARRIERS USING 1/2"Øx6 1/2" HILTI-HAS-E ANCHORS (OR APPROVED EQUAL) WITH ONE OF THE FOLLOWING HILTI EPOXIES (OR APPROVED EQUAL):
 a. HILTI HIT 150 - 4 1/2" MIN. EMBEDMENT
 b. HILTI RE500 - 5" MIN. EMBEDMENT

TRANSITION TO BRIDGE RAIL FOR PCC PAVEMENT

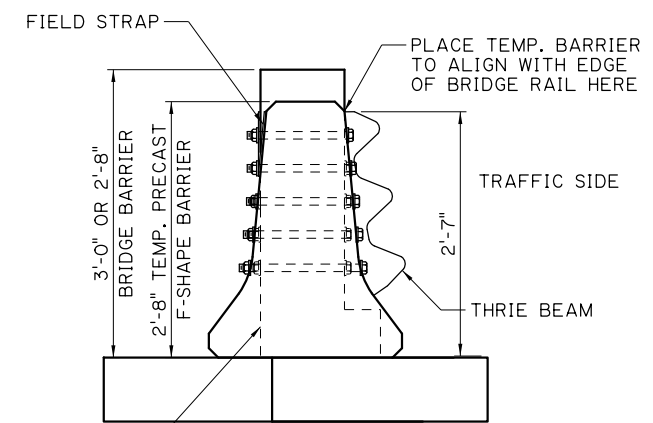
A MINIMUM OF TWO FULLY PINNED BARRIERS ARE REQUIRED PRIOR TO BRIDGE

* ATTACH THRIE BEAM ASSEMBLY USING FIVE (5) 7/8"Ø A325 BOLTS ON EACH END. (CORE 1"Ø HOLES THROUGH BRIDGE RAIL AND BARRIER, NO PERCUSSION DRILLING.) BOLTS SHALL USE A HARDEND WASHER ON EACH FACE AND HEAVY HEX NUTS ON REAR SIDE OF TRANSITION.
 AFTER REMOVAL, REPAIR WITH NON-SHRINK GROUT FROM APPROVED MATERIALS LIST.



TRANSITION TO BRIDGE RAIL FOR ASPHALT PAVEMENT

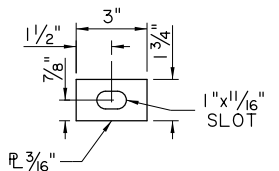
A MINIMUM OF TWO FULLY PINNED BARRIERS ARE REQUIRED PRIOR TO BRIDGE



SECTION A-A

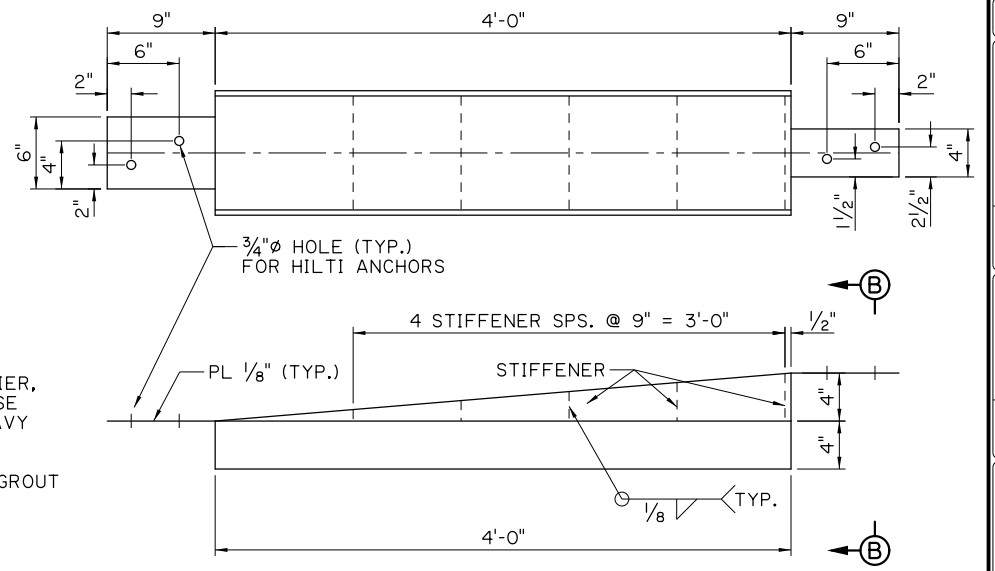
HEIGHT TRANSITION CAP NOT SHOWN FOR CLARITY

| THRIE BEAM ASSEMBLY | | |
|---------------------|-----|-------------------------------|
| DESIGNATOR | NO. | ITEM DESCRIPTION |
| FBB02 | 24 | GUARDRAIL BUTTON HEAD BOLT |
| FBB | 24 | RECESSED NUT |
| FWRO3 | 24 | RECTANGULAR GUARDRAIL WASHER |
| RTM02a | 2 | THRIE-BEAM GUARDRAIL |
| RTE01b | 2 | THRIE-BEAM TERMINAL CONNECTOR |



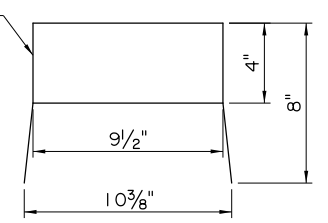
RECTANGULAR GUARDRAIL WASHER

GUARDRAIL WASHERS SHALL BE INSTALLED UNDER THE BOLT HEAD ON THE UPSTREAM END AND UNDER THE NUT ON THE DOWNSTREAM END OF THE THRIE-BEAM ASSEMBLY

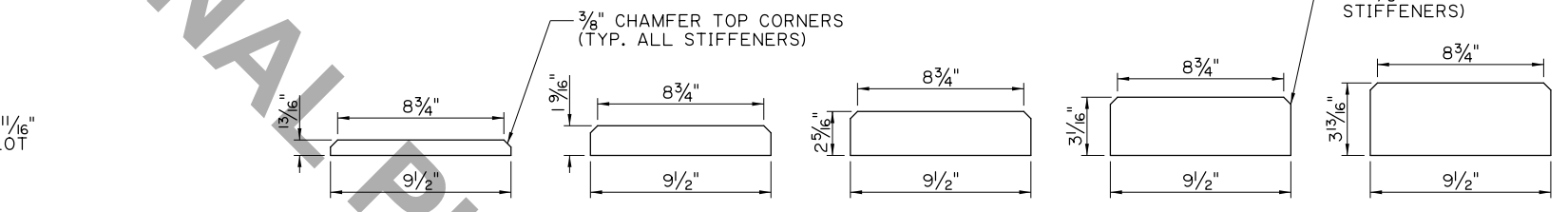


HEIGHT TRANSITION CAP
A-36 STEEL, PL 1/8"

☒ OUTER SHELL MAY BE MANUFACTURED FROM SEPERATE PLATES WELDED TOGETHER AT THE JOINTS, BENT PLATE (WITH BEND RADII NO GREATER THAN 1/4") OR ANY COMBINATION OF THE TWO.

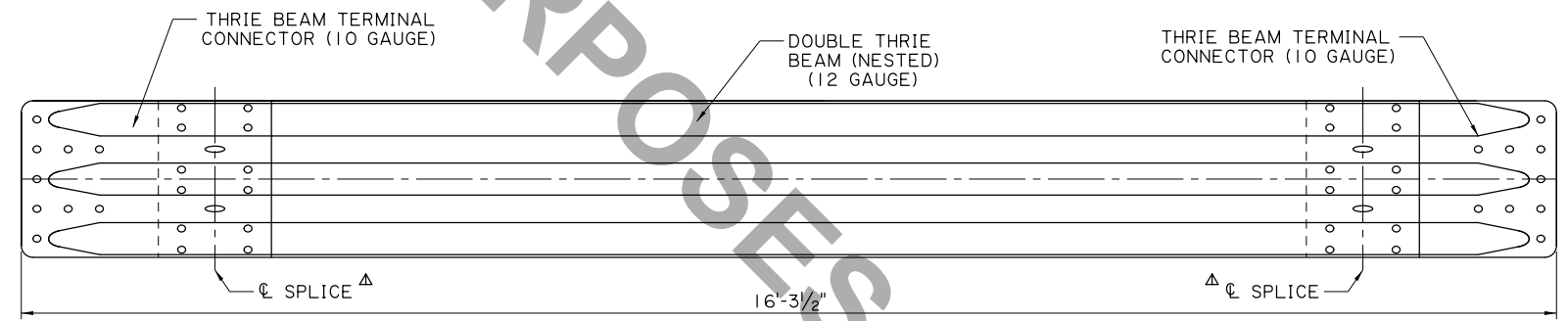


SECTION B-B



TRANSITION CAP STIFFENERS

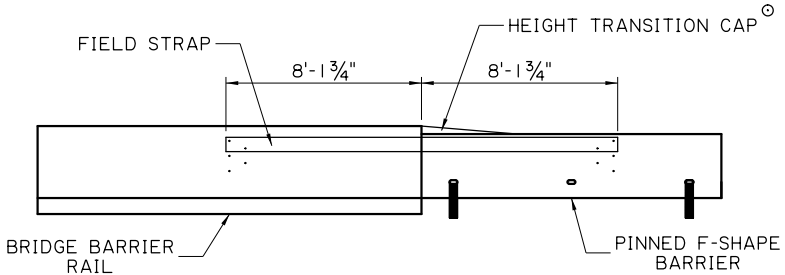
ADJUST HEIGHT AND TOP WIDTH AS NEEDED TO FIT
A-36 STEEL, PL 1/8"



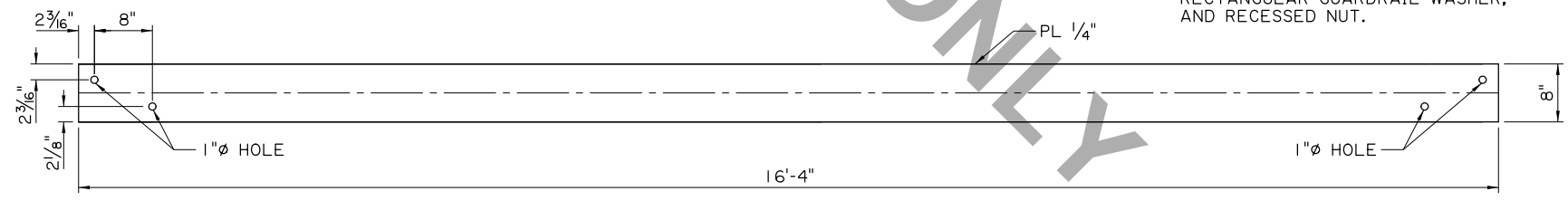
THRIE BEAM ASSEMBLY

SEE GUARDRAIL STANDARD PLANS FOR THRIE BEAM, BUTTON HEAD BOLT, AND RECESSED NUT DETAILS

△ THRIE BEAM SHALL BE SPLICED IN THE DIRECTION OF TRAFFIC USING 2" LONG BUTTON HEAD BOLT, RECTANGULAR GUARDRAIL WASHER, AND RECESSED NUT.



REAR VIEW OF TRANSITION



FIELD STRAP
A-36 STEEL

| | | | |
|--|-------------|--------------------------------------|-----------------|
| SHEET NUMBER | PARISH | CONTROL SECTION | STATE PROJECT |
| DESIGN CHECK | K. BRAUNER | DETAIL CHECK | C. GAUDRY |
| REVIEW | C. GAUDRY | REVIEW | C. GAUDRY |
| APPROVED BY CHIEF ENGINEER: | [Signature] | | DATE: 3/25/2024 |
| NO. | DATE | REVISION OR CHANGE ORDER DESCRIPTION | BY |
| 1 | | | |
| | | | |
| TEMPORARY PRECAST BARRIER MASH F-SHAPE TRANSITION (TL-3) TRANSITION TO VERTICAL END BLOCK ON F-SHAPE AND SINGLE SLOPE BRIDGE RAILS | | | |
| STANDARD PLAN BR-TEMP-TR | | | |
| BRIDGE AND STRUCTURAL DESIGN | | | |