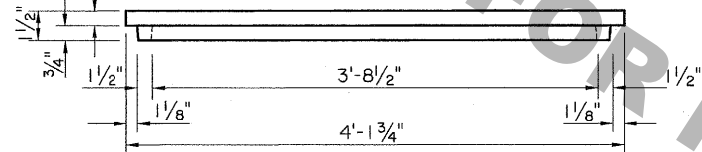
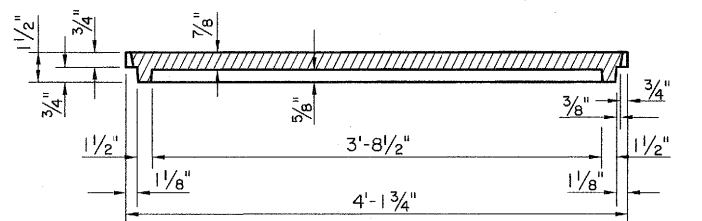


PLAN OF CAST IRON COVER

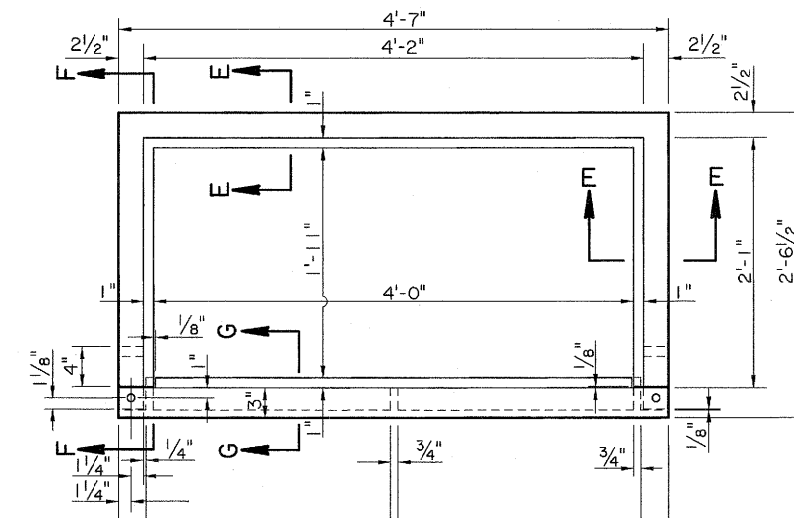


FRONT ELEVATION OF CAST IRON COVER

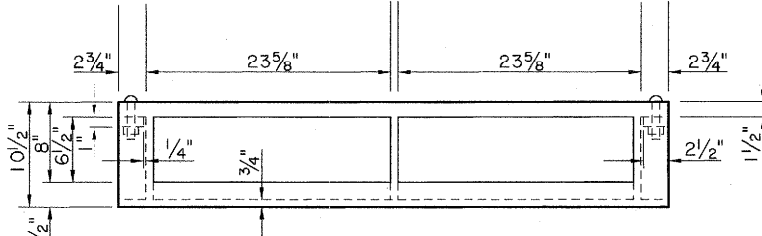


SECTION J-J

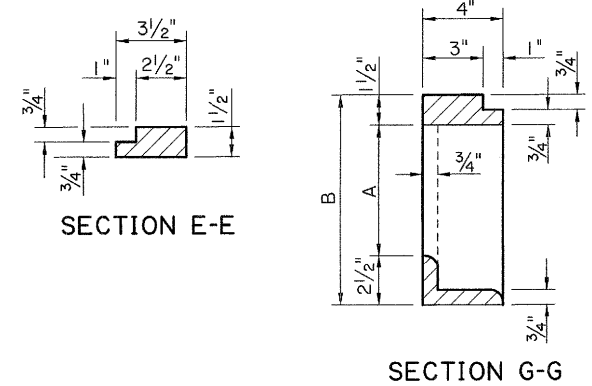
TYPE "H"
CAST IRON COVER, GRATE AND FRAME
 NOTES: WEIGHT OF CAST IRON COVER = 268 LBS.
 WEIGHT OF CAST IRON FRAME = 129 LBS.
 WEIGHT OF CAST IRON GRATE = 160 LBS.



PLAN OF CAST IRON GRATE AND FRAME

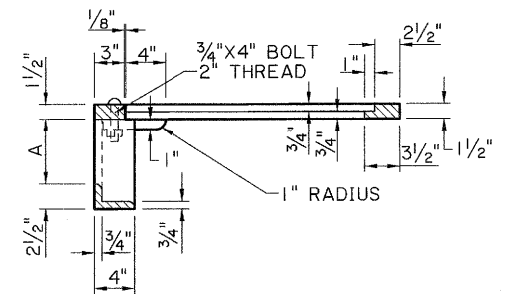


FRONT ELEVATION OF CAST IRON GRATE AND FRAME

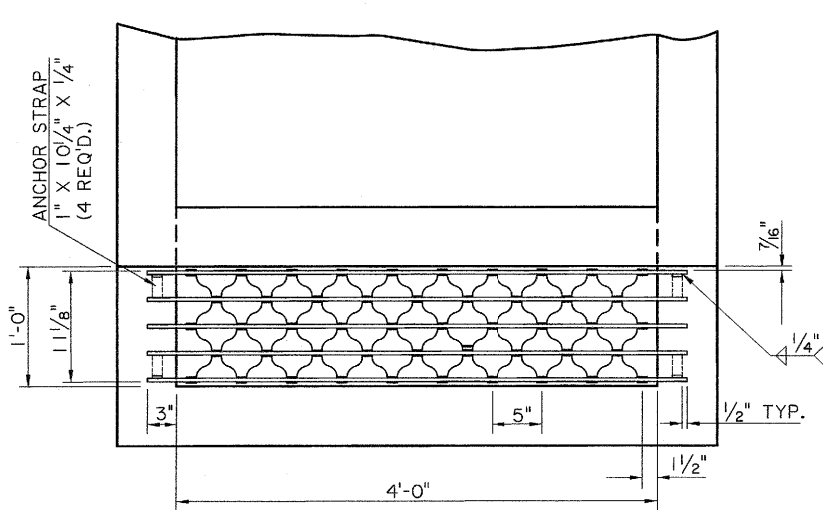


SECTION E-E

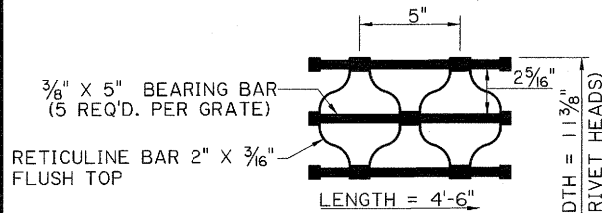
SECTION G-G



SECTION F-F



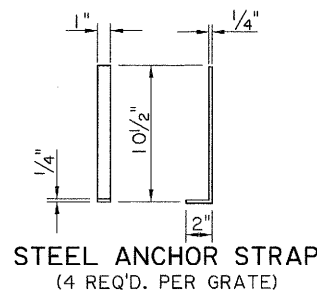
PLAN



DRAIN GRATE DETAIL (ALTERNATE)

RIVETED RETICULINE DRAIN GRATE ALTERNATE

CENTER TO CENTER OF BEARING BARS EQUAL 2 1/16".
 WEIGHT OF DRAIN GRATE = 176 LBS. ± 5%

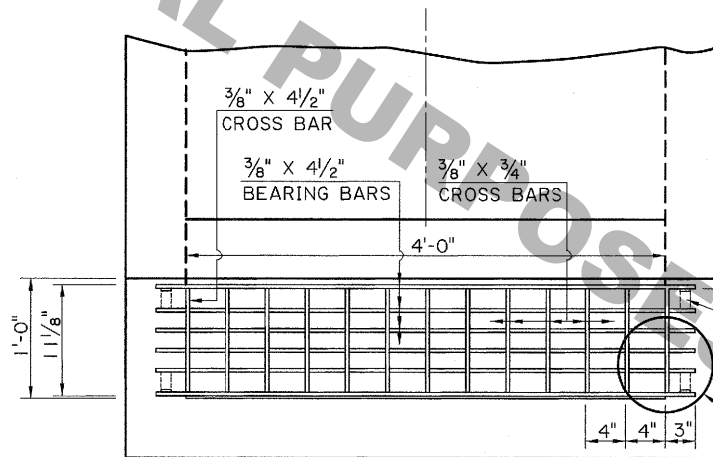


STEEL ANCHOR STRAP (4 REQ'D. PER GRATE)

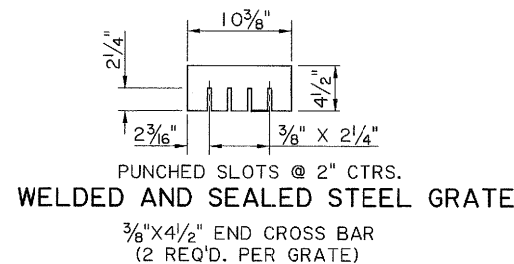
WELDED & SEALED DRAIN GRATE

WELD FULL DEPTH. SEAL AFTER STRENGTH WELD IS COMPLETED.
 WEIGHT OF DRAIN GRATE = 185 LBS. ± 5%

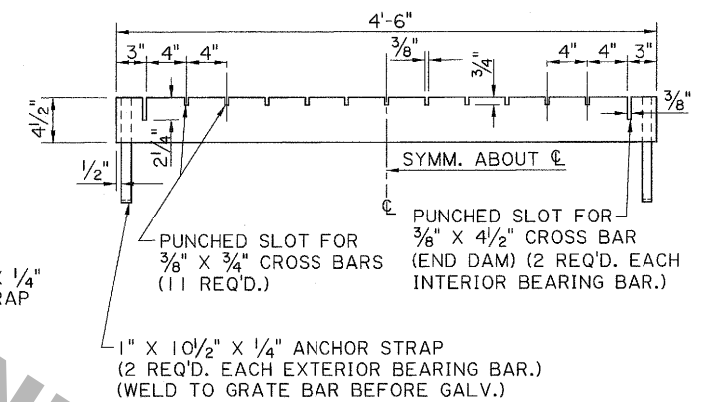
TYPE "I"
STEEL DRAIN GRATE
 GRATE TO BE GALVANIZED AFTER FABRICATION.



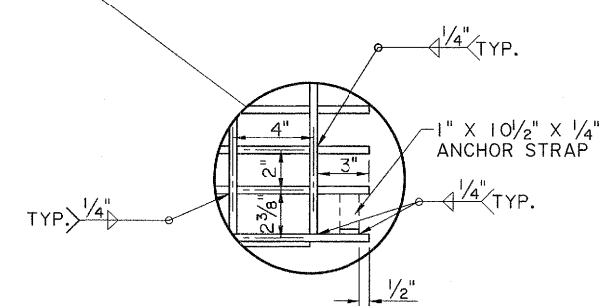
PLAN



WELDED & SEALED STEEL GRATE
 3/8" x 4 1/2" END CROSS BAR (2 REQ'D. PER GRATE)



ELEVATION



SHEET NUMBER	PARISH	FEDERAL PROJECT	STATE PROJECT
DESIGNED	CHKD	DETAILED	DATE
8-11-06	JDK	JCM	8-15-77
9-26-94			3 OF 4
DATE	BY	REVISION DESCRIPTION	DATE
4-16-12	Richard Z. Davis	GENERAL REVISIONS	4-16-12
8-11-06		GENERAL REV. - ADD TYPE K.I. REVISED TYPES C.E.I.N	
9-26-94		GENERAL REVISIONS - DELETE TYPES G.J.L.M.O	
APPROVED BY	CHIEF ENGINEER		
4-16-12	Richard Z. Davis		
DETAILS OF GRATES, GRATE FRAMES AND COVERS FOR CATCH BASINS AND MANHOLES			
STANDARD PLAN	MC-01		
HYDRAULICS SECTION			