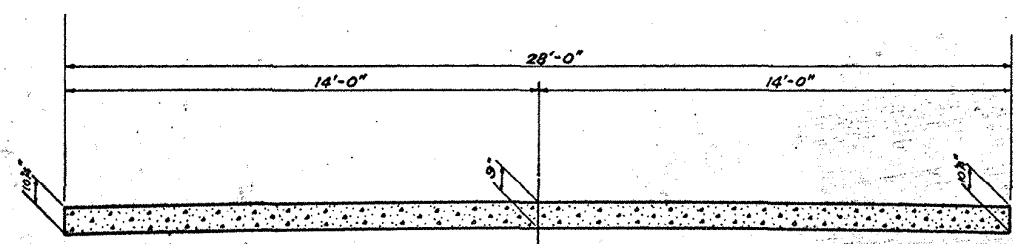
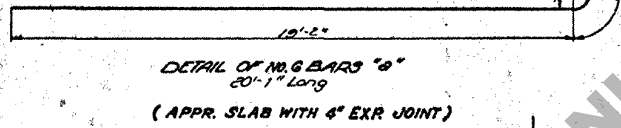


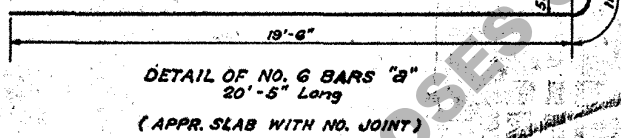
SECTION A-A



SECTION B-B
(Reinforcing Steel Not Shown)
(APPR. SLAB WITH NO JOINT)



DETAIL OF NO. 6 BARS "a"
19'-2" Long
(APPR. SLAB WITH 4" EXP. JOINT)



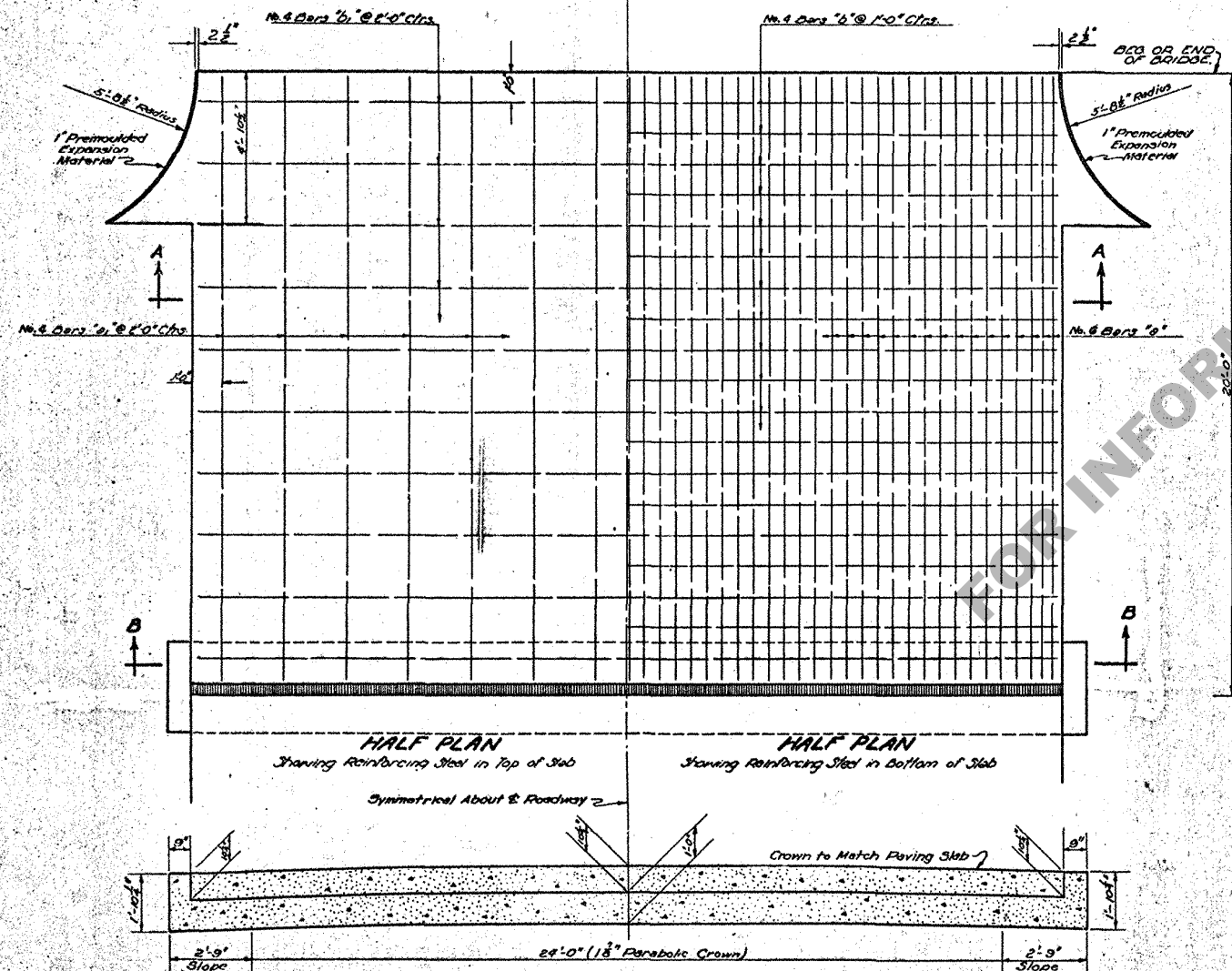
DETAIL OF NO. 6 BARS "b"
19'-6" Long
(APPR. SLAB WITH NO JOINT)

BILL OF MATERIAL (ONE SLAB)
(4" EXPANSION JOINT)

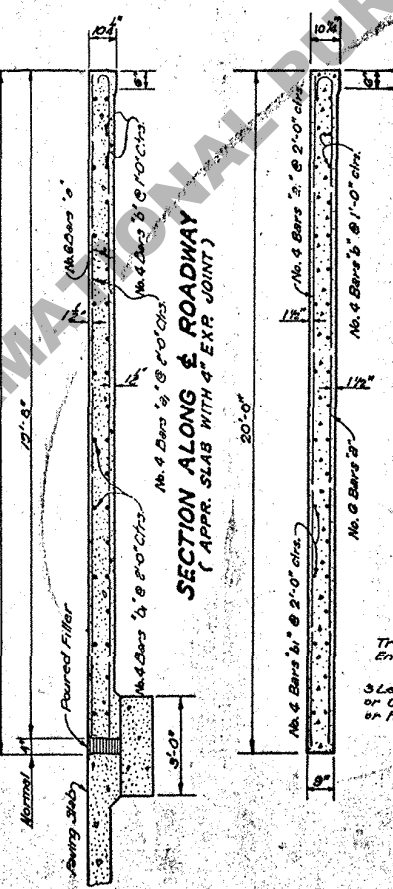
BAR	SIZE	NO.	UNIT LGTH	TOTAL LGTH	LOCATION
a	No. 6	37	20'-1"	1184'-9"	Bottom of Slab
TOTAL NO. 6 BARS = 1184'-9" = 1719 POUNDS					
b	No. 4	14	19'-4"	270'-8"	Top of Slab
b	No. 4	19	27'-8"	525'-8"	Bottom of Slab
b	No. 4	10	27'-8"	276'-8"	Top of Slab
TOTAL NO. 4 BARS = 1073'-0" = 717 POUNDS					
CLASS "A" CONCRETE (BLOCK ONLY)					3.42 CU. YDS.
TOTAL REINFORCING STEEL					2436 LBS.
CONCRETE APPROACH SLAB					61.84 SQ. YDS.
POURED FILLER, ASPHALT MINERAL					0.399 TONS

BILL OF MATERIAL (ONE SLAB)
(NO JOINT)

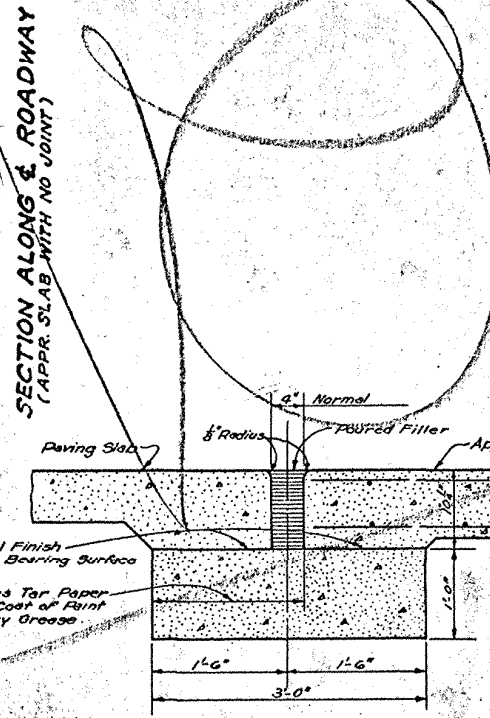
BAR	SIZE	NO.	UNIT LENGTH	TOTAL LGTH.	LOCATION
a	No. 6	57	20'-5"	1163'-9"	Bottom of Slab
TOTAL NO. 6 BARS = 1163'-9" = 1748 POUNDS					
a1	No. 4	14	19'-8"	275'-4"	Top of Slab
b	No. 4	19	27'-8"	525'-8"	Bottom of Slab
b1	No. 4	10	27'-8"	276'-8"	Top of Slab
TOTAL NO. 4 BARS = 1077'-8" = 720 POUNDS					
TOTAL REINFORCING STEEL					2468 LBS.
CONCRETE APPROACH SLAB					62.88 SQ. YDS.



SECTION B-B
(Reinforcing Steel Not Shown) (Appr. Slab with 4" Exp. Joint)



SECTION ALONG & ROADWAY
(APPR. SLAB WITH 4" EXP. JOINT)



PART SECTION ALONG & ROADWAY
(Appr. Slab with 4" Exp. Joint)

GENERAL NOTES:
Construction Specifications: Latest approved La Dept. of Highways Specifications.
Design Specifications: A.S.H.O., 1949.
Dimensions relating to Reinforcing Steel are to bar centers.
Reinforcing Steel to be Structural or Intermediate Grade.
1" Premoulded Expansion Material to be included in price list for concrete.
Conc. for Appr. Slab may be Class "A", or like of mix used in adjoining Pav.

NOTE: This Detail same as Std. C.M. 58 with Modifications to Fit 28' Rdwy. S.C. & C.G. Stds.

DATE	DESCRIPTION	BY	DESIGNED	CHECKED	TRACED
12-15-51	ADDED TABLE & DETAILS	W.S.K.			
11-20-51	ADDED 4" EXP. JOINT	W.S.K.			
11-20-51	ADDED 4" EXP. JOINT	W.S.K.			

STANDARD PLAN
20' REINF. CONC. APPROACH SLAB
28'-0" ROADWAY
TO BE USED WITH STD. PLANS
DATED May 7, 1951 C.G. 12-20 REV., S.C. 37-20 REV.

STATE OF LOUISIANA
DEPARTMENT OF HIGHWAYS

BRIDGE DESIGN SECTION

C.M. 137