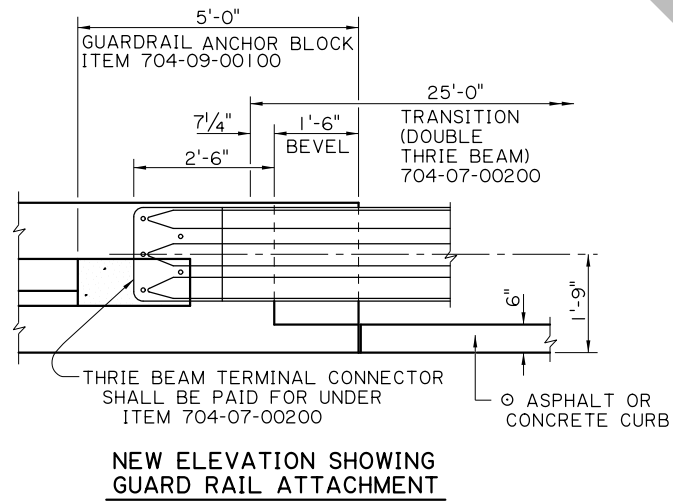
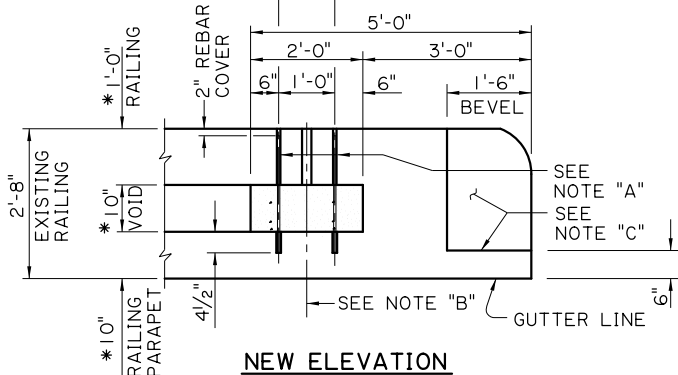


Ø 3/4" HOLES FOR 403 BARS (PROVIDE 2" TOP COVER)



GENERAL NOTES

FOR ADDITIONAL INFORMATION ON GUARD RAILS, SEE STANDARD PLANS FOR HIGHWAY GUARD RAIL (MASH).

* THESE DIMENSIONS MAY VARY. THE NON-SHRINK GROUT QUANTITY AND 403 BAR LENGTH SHALL BE ADJUSTED ACCORDINGLY.

ALL DIMENSIONS SHALL BE VERIFIED IN THE FIELD BY THE CONTRACTOR AND APPROVED BY THE PROJECT ENGINEER.

○ FOR CURB & TRANSITION, SEE STANDARD PLANS FOR HIGHWAY GUARD RAIL (MASH), SHEET 3 OF 11.

GUARD RAIL ANCHOR BLOCKS

ALL WORK AND MATERIALS REQUIRED TO MODIFY EXISTING RAILING SHALL BE PAID FOR UNDER: GUARD RAIL ANCHOR BLOCK, PER EACH, ITEM 704-09-00100.

NOTE "A"

DRILL 3/4" Ø HOLES THROUGH THE RAILING AND INTO THE RAILING PARAPET AS SHOWN. CLEAN HOLES WITH COMPRESSED AIR TO REMOVE ALL OIL AND RESIDUE. FILL HOLES WITH A TYPE IV, GRADE 2 OR 3 EPOXY LISTED ON THE APPROVED MATERIALS LIST, PRODUCT CATEGORY "EPOXY RESIN SYSTEMS". PLACE 403 BARS (2'-2" LONG) IN HOLES AND WAIT THE MANUFACTURER'S CURE TIME BEFORE POURING NEW CONCRETE.

NOTE "B"

DRILL A 2" Ø HOLE THROUGH THE DEPTH OF RAILING. FILL VOID BETWEEN RAILING AND RAILING PARAPET THROUGH THE 2" Ø HOLE WITH AN APPROVED FLOWABLE NON-SHRINK GROUT LISTED ON APPROVED MATERIALS LIST, PRODUCT CATEGORY "NON-SHRINK GROUT."

NOTE "C"

A AFTER REMOVING THE EXISTING CONCRETE TO CONSTRUCT THE 1'-6" BEVEL FULL HEIGHT, PREPARE THE VERTICAL SURFACE OF THE EXISTING VOID FOR AN EPOXY RESIN JOINT ACCORDING TO THE SPECIFICATIONS AND PLACE CONCRETE IN VOID. REDRESS AND FORM THE ENTIRE SURFACE OF THE BEVEL TO GIVE A SMOOTH APPEARANCE BY USING A FLOWABLE NON-SHRINK GROUT LISTED ON APPROVED MATERIALS LIST, PRODUCT CATEGORY "NON-SHRINK GROUT."

THIS DETAIL WAS DEVELOPED AND APPROVED FOR USE UNDER NCHRP REPORT 350. AS PER LADOTD'S MASH IMPLEMENTATION POLICY, ITS CONTINUED USE IS ALLOWED WHILE A MASH ALTERNATIVE IS DEVELOPED OR EVALUATED.

SHEET NUMBER		PARISH		CONTROL SECTION		STATE PROJECT	
DESIGN	P. FOSSIER	CHECK	C. GAUDRY	DETAIL	J. DOUCET	CHECK	P. FOSSIER
APPROVED BY CHIEF ENGINEER:				REVIEW	K. BRAUNER	SERIES #	
DATE:	10/14/2025			REMOVED 2016 LSSRB REFERENCE	CMG	BY	
DATE	9/16/25	DATE		REVISION OR CHANGE ORDER DESCRIPTION			
GUARD RAIL ANCHOR BLOCK REHABILITATION FOR CONCRETE POST & RAIL (ALTERNATE 2)							
STANDARD PLAN							