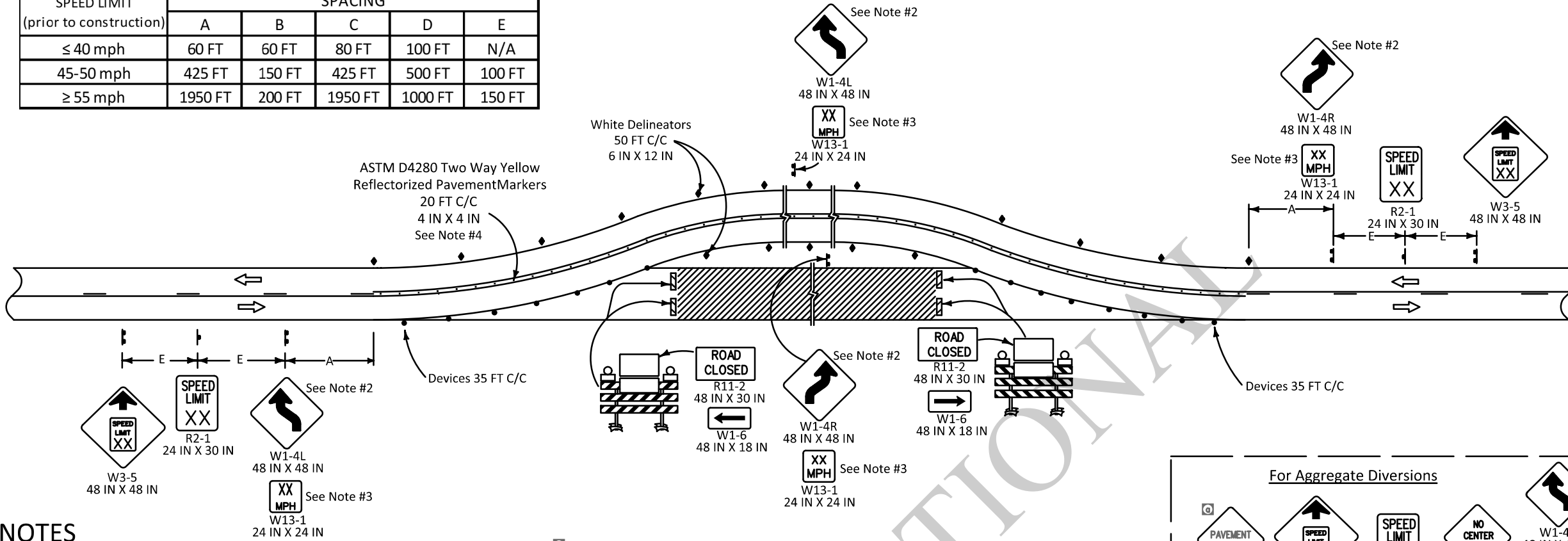


SPEED LIMIT (prior to construction)	SPACING				
	A	B	C	D	E
≤ 40 mph	60 FT	60 FT	80 FT	100 FT	N/A
45-50 mph	425 FT	150 FT	425 FT	500 FT	100 FT
≥ 55 mph	1950 FT	200 FT	1950 FT	1000 FT	150 FT

### For tangent distances along the diversion greater than 600 FT



### NOTES

This sheet shall be used with the Temporary Traffic Control General Notes Sheets TTC-00(A), TTC-00(B), TTC-00(C), TTC-00(D), and other Temporary Traffic Control Sheets as appropriate.

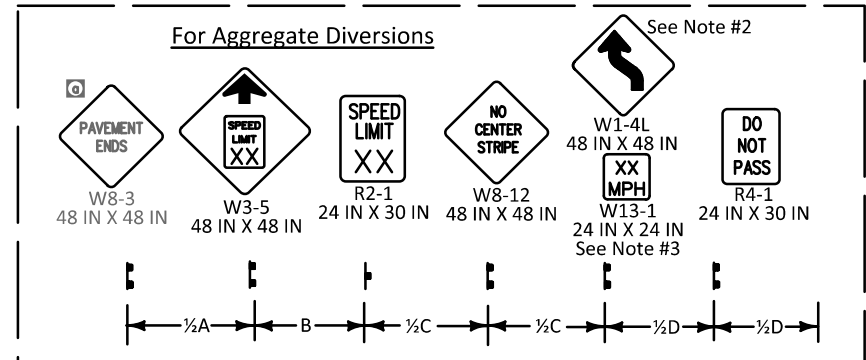
1) This layout represents the minimum traffic controls required for a paved or aggregate diversion. For advance signing see TTC-00(D).

2) If advisory speed is less than 35 mph, the "Reverse Curve Signs" (W1-4L or W1-4R) will be changed to "Reverse Turn Sign" (W1-3L or W1-3R).

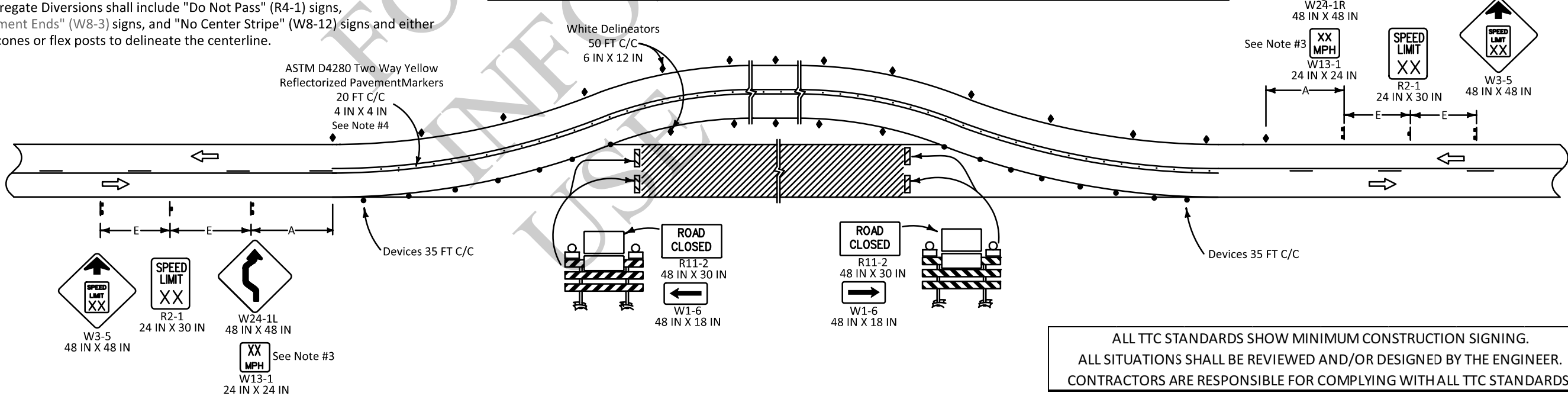
3) Paved Diversions shall be striped with double yellow solid lines and raised pavement markings as per LADOTD Pavement Marking Standards.

4) Aggregate Diversions shall include "Do Not Pass" (R4-1) signs, "Pavement Ends" (W8-3) signs, and "No Center Stripe" (W8-12) signs and either supercones or flex posts to delineate the centerline.

5) When positive protection is introduced that requires object markers they shall have an orange/black pattern.



### For tangent distances along the diversion less than or equal to 600 FT



ALL TTC STANDARDS SHOW MINIMUM CONSTRUCTION SIGNING.  
ALL SITUATIONS SHALL BE REVIEWED AND/OR DESIGNED BY THE ENGINEER.  
CONTRACTORS ARE RESPONSIBLE FOR COMPLYING WITH ALL TTC STANDARDS.

**LEGEND**

- Traffic Sign
- Channelizing Devices
- Type III Barricades
- Single White Delineators (6 IN X 12 IN)
- Reflectorized Pavement Markers
- Type B Light
- Direction of Travel

APPROVED BY CHIEF ENGINEER: [Signature]

DATE: 3/11/2026

REVISION OR CHANGE ORDER DESCRIPTION

6-12-25 DATE

NO. 6

STATE OF LOUISIANA

TEMPORARY TRAFFIC CONTROL FOR ON SITE DIVERSION WITH TWO-WAY TRAFFIC

TTC-05

DOTD LOUISIANA DEPARTMENT OF TRANSPORTATION & DEVELOPMENT

STANDARD PLAN