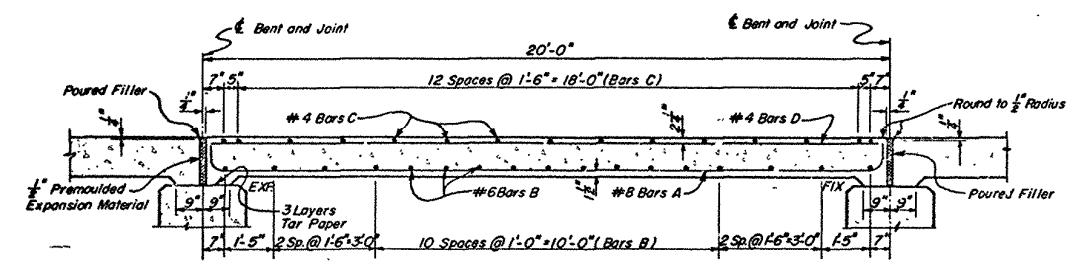
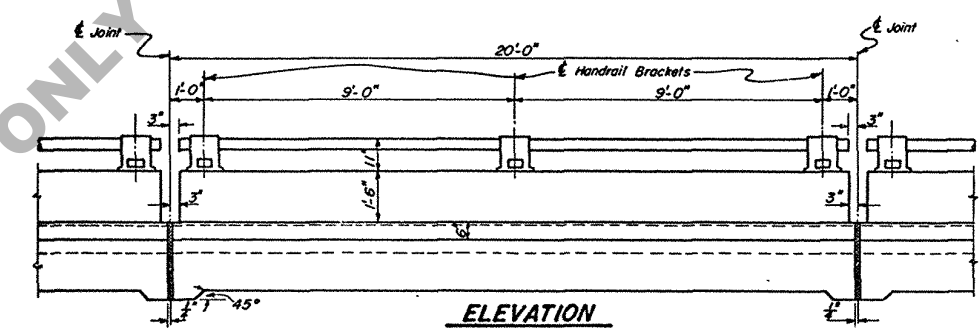


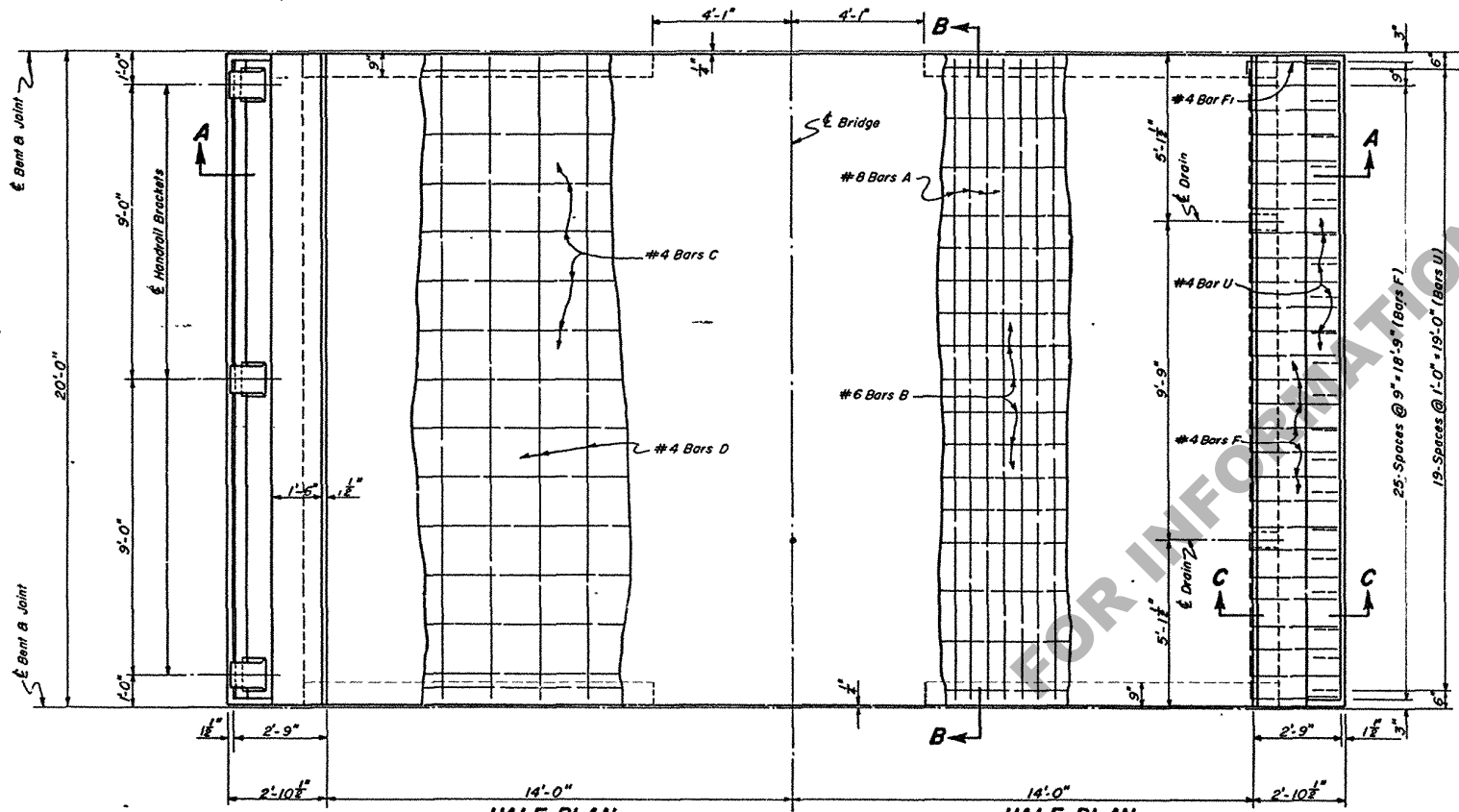
**SECTION A-A**



**SECTION B-B**

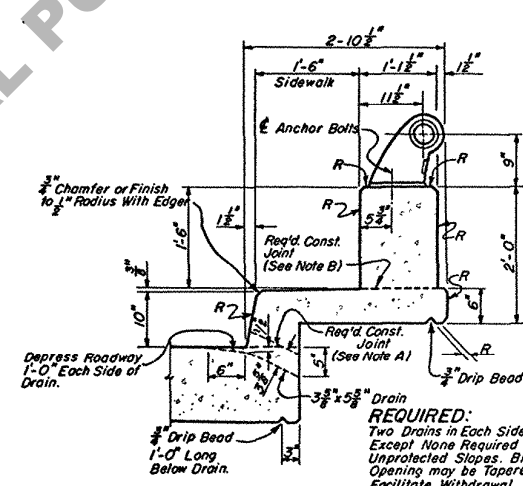


**ELEVATION**  
(BENTS NOT SHOWN)



**HALF PLAN**  
(SHOWING HANDRAIL AND TOP OF SLAB REINFORCING STEEL)

**HALF PLAN**  
(SHOWING BOTTOM OF SLAB, SIDEWALK AND HANDRAIL PARAPET REINFORCING STEEL)



**SECTION C-C**  
(SHOWING HANDRAIL AND DRAIN)

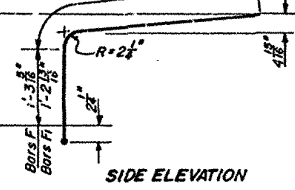
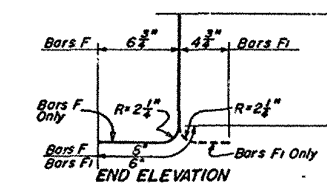
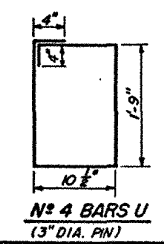
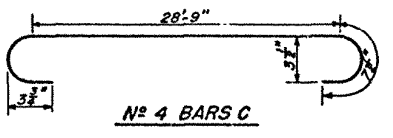
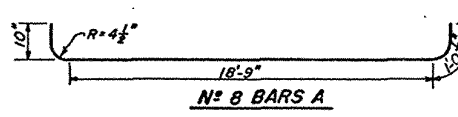
**NOTE:**  
For Handrail Details Not Shown, See Aluminum Pipe Handrail, Type 3, Standard Plan C.M. 184.

**NOTE A:**  
After Completing Pour for Roadway Slab, a Minimum of 3-Days Shall Elnapse for Concrete in Roadway Slab Shall Attain a Minimum Compressive Strength of 1500 P.S.I. Before Beginning Pour for Sidewalk Cantilever.

**NOTE B:**  
After Completing Pour for Sidewalk Cantilever a minimum of 7-Days shall Elnapse for Concrete in Sidewalk Cantilever Shall Attain a Minimum Compressive Strength of 3000 P.S.I. Before Beginning Pour for Handrail Parapet.

QUANTITIES (ONE SPAN)				
BAR SIZE	Nº	UNIT LENGTH	TOTAL LENGTH	LOCATION
A	#8	60	20'-10"	Bottom of Slab
A1	#8	2	19'-6"	Bottom of Slab
<b>TOTAL #8 BARS = 1289'-0"</b>			<b>= 3442 LBS.</b>	
B	#6	17	29'-1"	Bottom of Slab
<b>TOTAL #6 BARS = 494'-5"</b>			<b>= 743 LBS.</b>	
C	#4	15	30'-0"	Top of Slab
D	#4	31	19'-6"	Top of Slab & Sidewalks
D1	#4	8	15'-1"	Handrail Parapets
F	#4	52	4'-6"	Sidewalks & Slab
F1	#4	2	4'-3"	Sidewalks & Slab
U	#4	40	5'-11"	Handrail Parapets
<b>TOTAL #4 BARS = 1686'-4"</b>			<b>= 1126 LBS.</b>	
<b>TOTAL DEFORMED REINFORCING STEEL = 6311 LBS.</b>				
<b>TOTAL CLASS "A" CONCRETE = 29.86 CU. YDS.</b>				
<b>TOTAL PIPE HANDRAIL = 39.00 LIN. FT.</b>				

**GENERAL NOTES:**  
Construction Specifications: Latest Approved La. Dept. of Highways Std. Specifications.  
Design Specifications: A.A.S.H.O. Std. Specifications for Highway Bridges, 1957, as Amended to September, 1961.  
Live Load: H20-S16-44 (Modified)  
All Concrete to be Class "A".  
Exposed Corners to Have 3/8" Chamfer.  
Reinforcement Bars Shall be Intermediate or Hard Grade A.S.T.M. A15, or Rail Steel A.S.T.M. A66, conforming with A.S.T.M. A 305.  
Dimensions relating to Reinforcing Steel are to Bar Centers.  
1/2" Premoulded Expansion Material, Poured Filler, and Tar Paper to be Included in Price Bid for Class "A" Concrete.  
R denotes Class 2 Rubbed Finish.



STANDARD PLAN  
**20'-0" CONCRETE SLAB SPAN**  
LIVE LOAD H 20-S16-44 (MODIFIED)  
28'-0" ROADWAY  
9'-0" CROSSING  
1'-6" SIDEWALKS  
TANGENT CROWN

DESIGNED: [Signature] DETAILED: [Signature] TRACED: [Signature]  
CHECKED: [Signature] CHECKED: [Signature] CHECKED: [Signature]

STATE OF LOUISIANA  
DEPARTMENT OF HIGHWAYS

DATE: [ ] DESCRIPTION: [ ] BY: [ ]

BRIDGE DESIGN SECTION