

## NOTES

This sheet shall be used with the Temporary Traffic Control General Notes Sheets TTC-00(A), TTC-00(B), TTC-00(C), and other Temporary Traffic Control Sheets as appropriate.

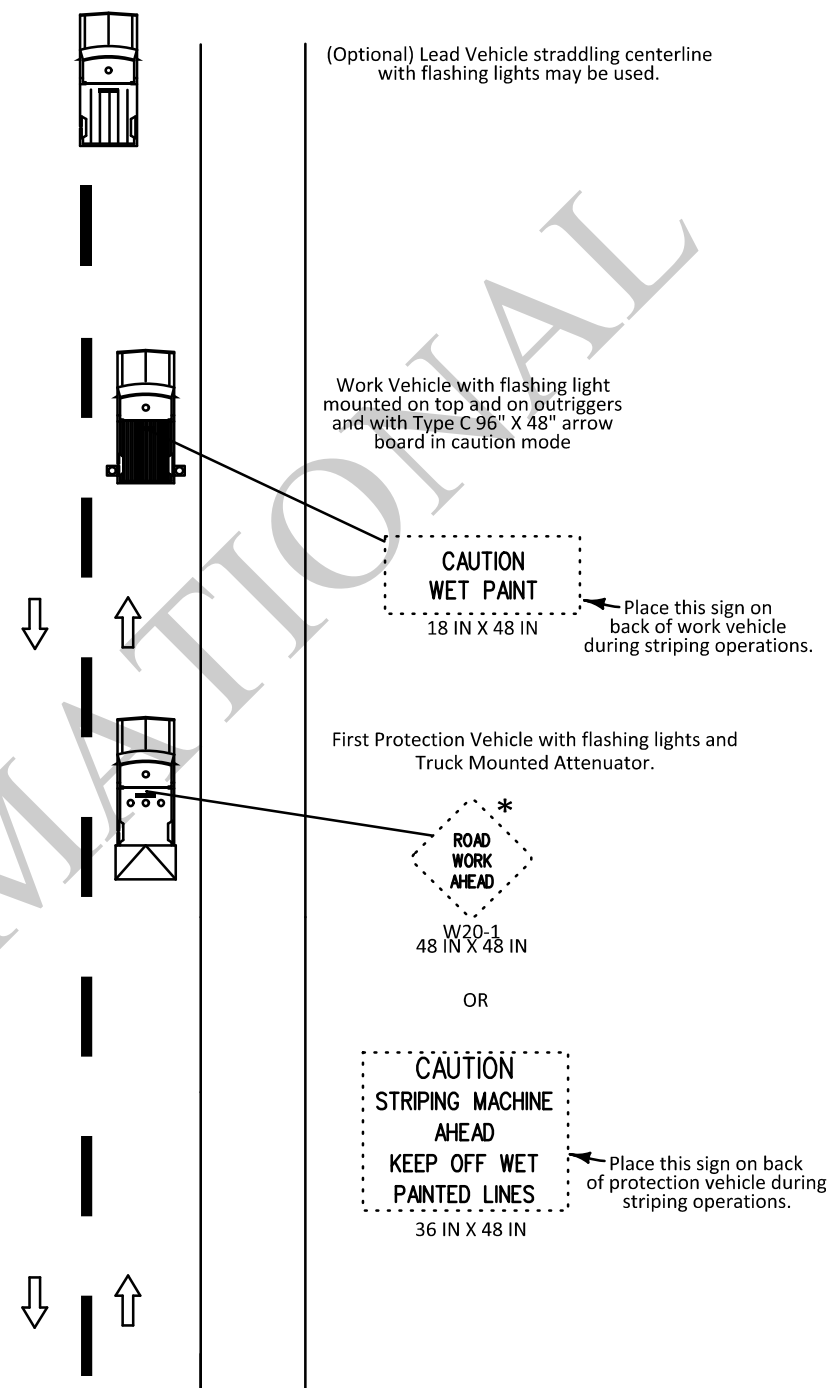
1) This layout represents the minimum traffic controls required for moving operations on two-lane roads with two-way traffic, such as striping, street sweeping, and placement of raised pavement markers.

2) Distances between vehicles may vary and should be adjusted due to drying time and sight obstructions such as overpasses and hills. Vehicles with attenuators shall move with work operations. Buffer space shall not exceed roll-ahead distance required by the manufacturer plus 100 feet.

3) If a queue greater than 5 minutes (about 1000 feet) exists, the contractor shall cease operations and pull over to the shoulder until the queue dissipates.

4) Flaggers may be used with this layout, if needed. See TTC-00(B).

5) All construction vehicles with flashing lights shall use green/amber colors.



\* Any sign of the W20-1 series may be used.

## LEGEND

→ Direction of Travel

Work Vehicle

Lead Vehicle

Protection Vehicle

ALL TTC STANDARDS SHOW MINIMUM CONSTRUCTION SIGNING.  
ALL SITUATIONS SHALL BE REVIEWED AND/OR DESIGNED BY THE ENGINEER.  
CONTRACTORS ARE RESPONSIBLE FOR COMPLYING WITH ALL TTC STANDARDS.

SHEET NUMBER		PARISH		CONTROL SECTION		STATE PROJECT		
DESIGN	G. Dunn	CHECK	B. Boucher	DETAIL	G. Dunn	CHECK	B. Boucher	
REVIEW		REVIEW		REVIEW		REVIEW		
APPROVED BY CHIEF ENGINEER							DATE:	3/11/2026
NO.	DATE	REVISION OR CHANGE ORDER DESCRIPTION						
TEMPORARY TRAFFIC CONTROL FOR MOVING OPERATIONS ON TWO-WAY TWO-LANE ROADWAYS TTC-18								
 LOUISIANA DEPARTMENT OF TRANSPORTATION & DEVELOPMENT STANDARD PLAN								