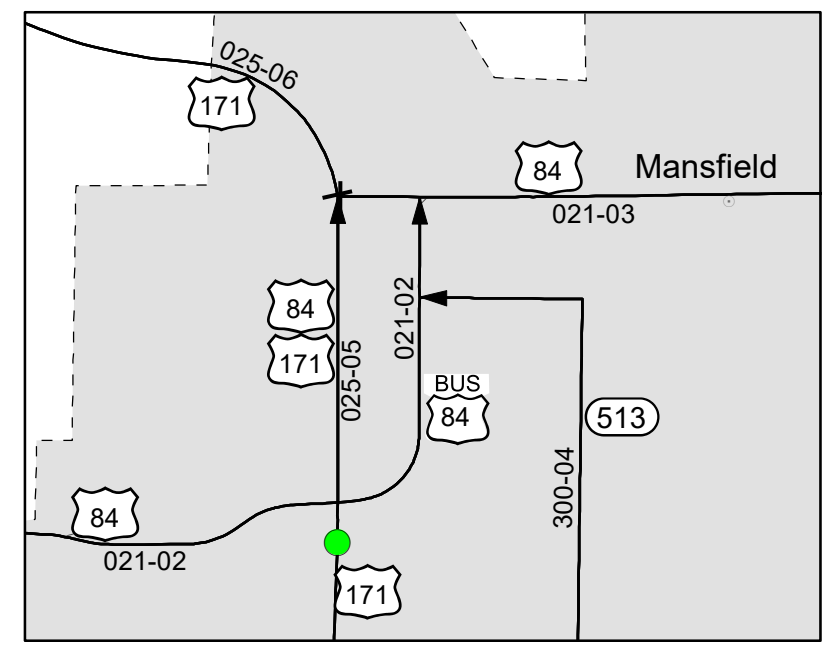
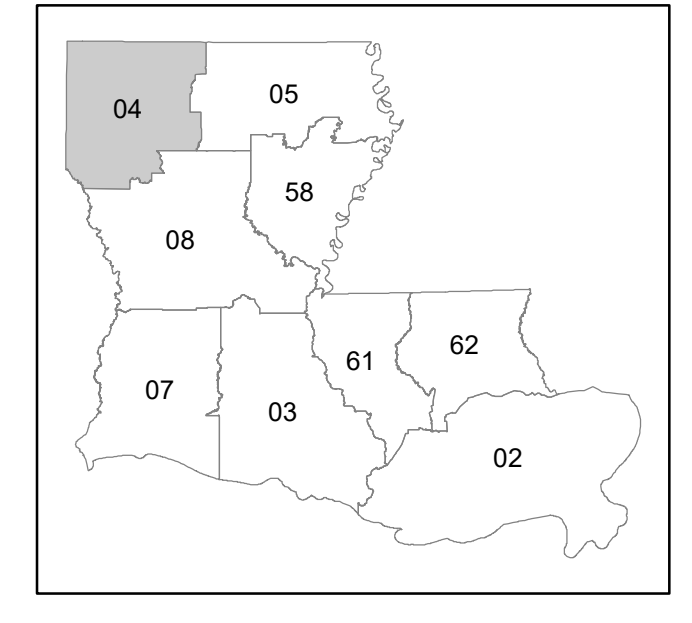
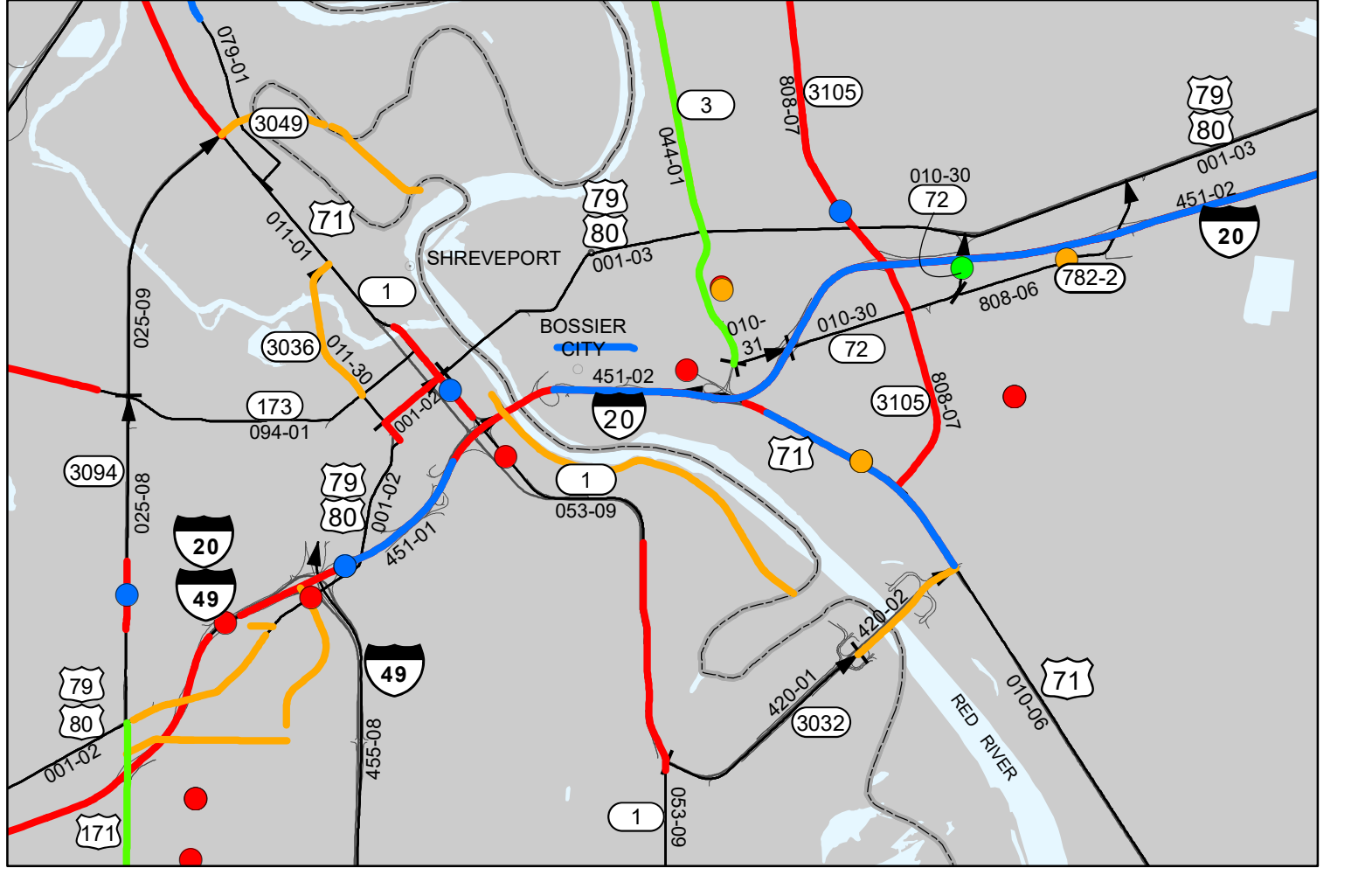


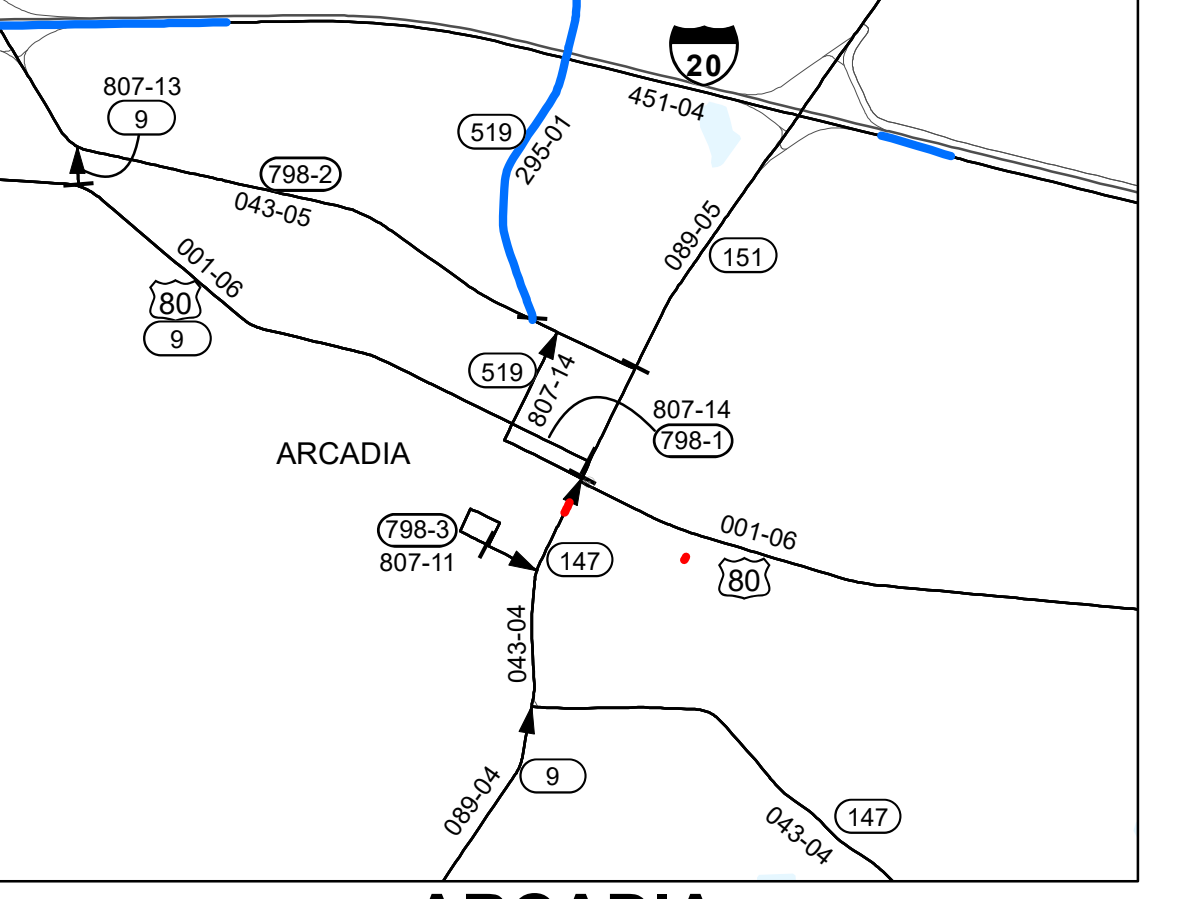
- PARISH SEATS
- MUNICIPALITIES
- COMMUNITIES
- PROJECTS LET BETWEEN JULY 2019 AND SEPTEMBER 2024
- PROJECTS TO BE LET BETWEEN OCTOBER 2024 AND JUNE 2025
- PROJECTS SCHEDULED TO BE LET IN SFY 25-26 (Next Fiscal Year)
- OTHER PROJECTS BEING DEVELOPED
- CONTROL SECTIONS / STATE ROUTES
- PROPOSED ROADS
- FERRY BOATS
- PARISH LINES
- URBANIZED AREAS
- URBAN AREAS



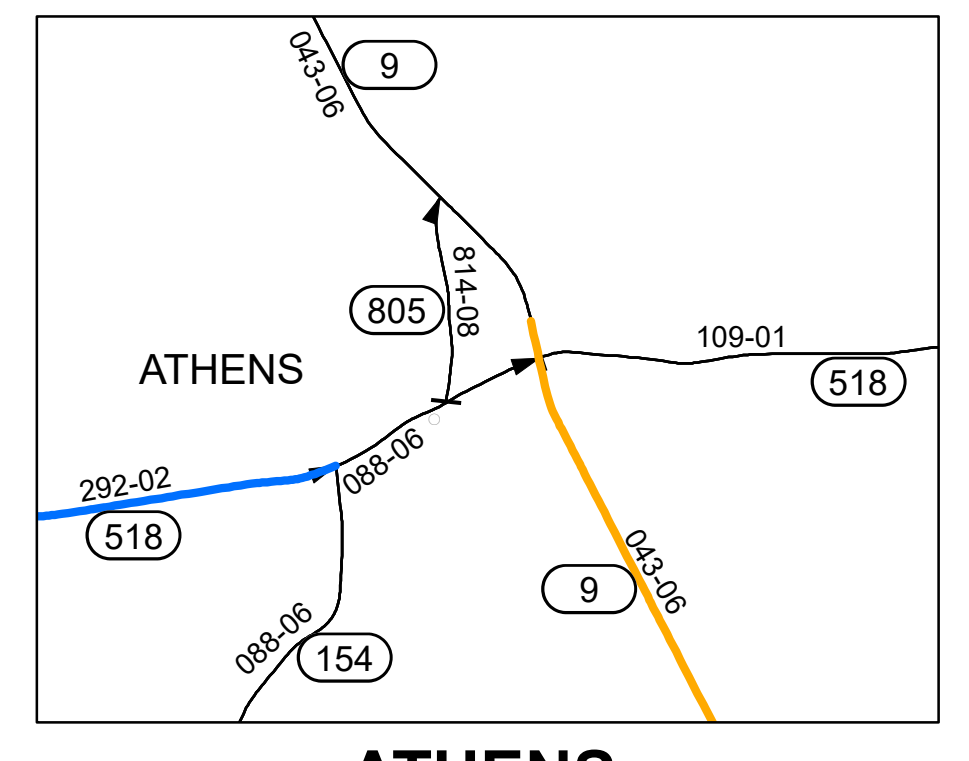
MANSFIELD



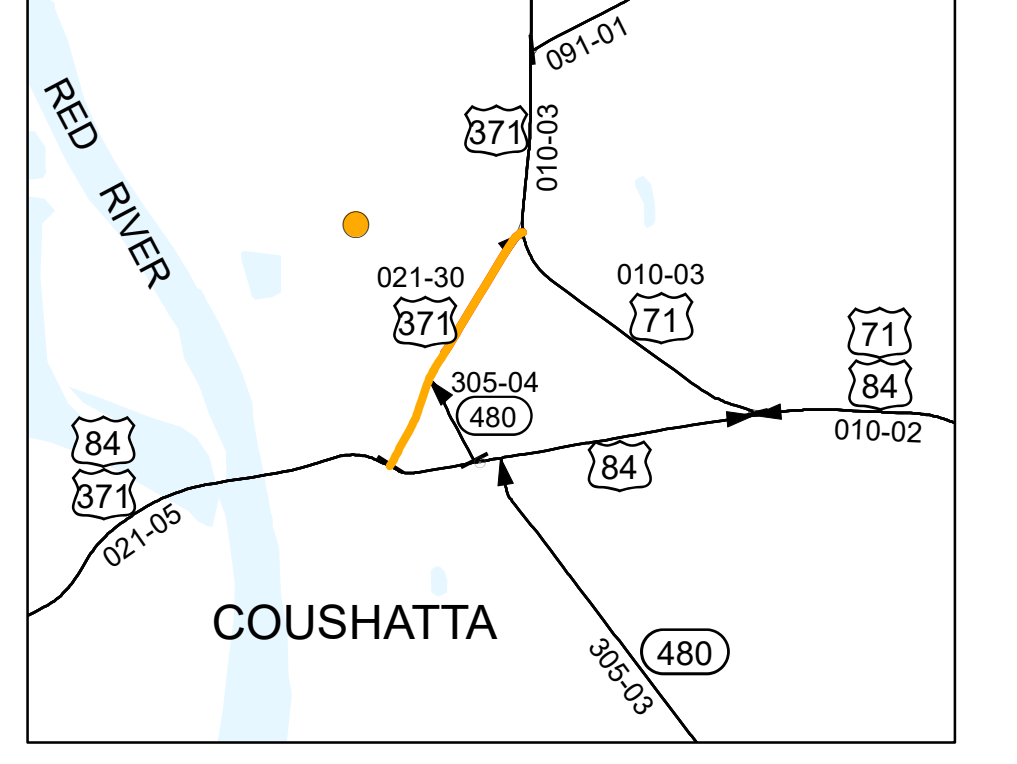
SHREVEPORT - BOSSIER CITY



ARCADIA



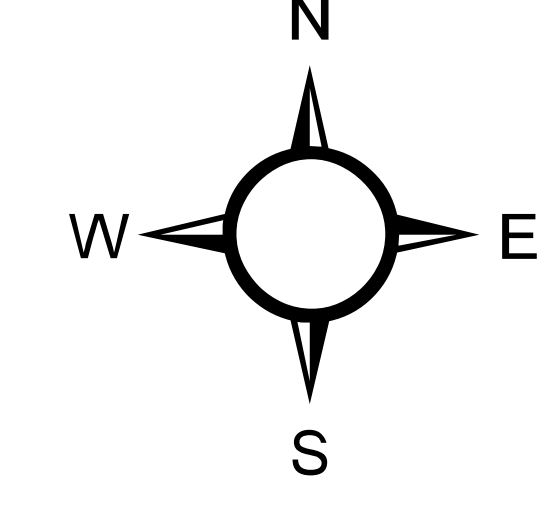
ATHENS



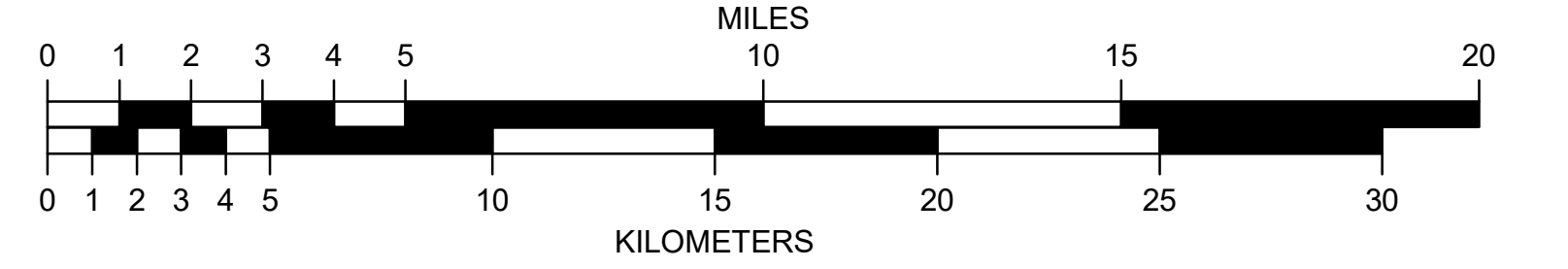
COUSHATTA



Map Updated: October 2024



MAPS FOR LEGISLATIVE PUBLIC HEARINGS FOR SFY 2025-2026 HIGHWAY PRIORITY PROGRAM DISTRICT 04



THIS MAP HAS BEEN PREPARED BY THE LOUISIANA DEPARTMENT OF TRANSPORTATION AND DEVELOPMENT INTENDED FOR INTERNAL PLANNING USE ONLY. ALTHOUGH THIS DATA IS NOT SURVEY GRADE, IT HAS BEEN SUBMITTED TO MANY RIGOROUS TESTS - ALL WITH EXCELLENT RESULTS - NO WARRANTY, EXPRESSED OR IMPLIED, IS MADE AS TO THE ACCURACY OF THE DATA. NOR SHALL THE FACT OF DISTRIBUTION CONSTITUTE ANY SUCH WARRANTY. DOTD ASSUMES NO LIABILITY IN ANY CONNECTION THEREWITH, AND ASSUMES NO RESPONSIBILITY TO DISTRIBUTE FUTURE MODIFICATIONS OR CORRECTIONS THAT MAY BE MADE.

PROJECTION: NAD_1983_UTM_Zone_19N
 Transverse_Mercator
 False_Easting: 500000.000000
 False_Northing: 0.000000
 Central_Meridian: -93.000000
 Scale_Factor: 0.999600
 Latitude_Of_Origin: 0.000000
 HORIZONTAL DATUM: NORTH AMERICAN DATUM OF 1983