

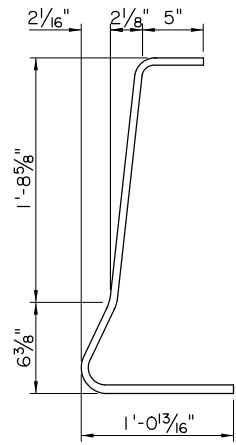
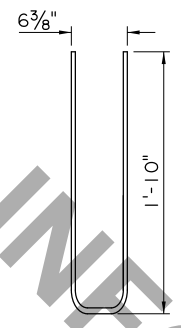


* DIMENSIONS ARE TO THE INTERSECTION POINT OF THE BARRIER SLOPES. CONSTRUCT THE 10" RADIUS TO PROVIDE A SMOOTH TRANSITION BETWEEN THE SLOPES.

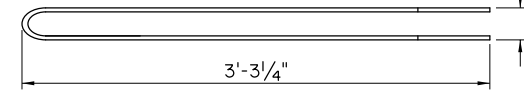
SHEET NUMBER		PARISH		CONTROL SECTION		STATE PROJECT	
DESIGN	K. BRAUNER	CHECK	C. GAUDRY	DETAIL	J. DOUCET	CHECK	C. GAUDRY
APPROVED BY CHIEF ENGINEER:	[Signature]		REVIEW	C. GUIDRY	SERIES #	1 OF 3	
DATE:	3/25/2024		REVISION OR CHANGE ORDER DESCRIPTION	NO.		DATE	
							
TEMPORARY PRECAST BARRIER MASH F-SHAPE (TL-3) CONCRETE BARRIER GEOMETRY AND REINFORCEMENT LOCATION PLAN							
STANDARD PLAN BR-TEMP BD.7.3.1.01							
							
BRIDGE AND STRUCTURAL DESIGN							



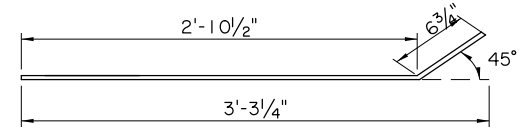
402 STIRRUPS
3"Ø PIN



403 BARS
3"Ø PIN



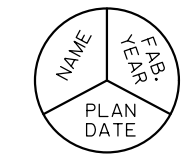
TOP VIEW



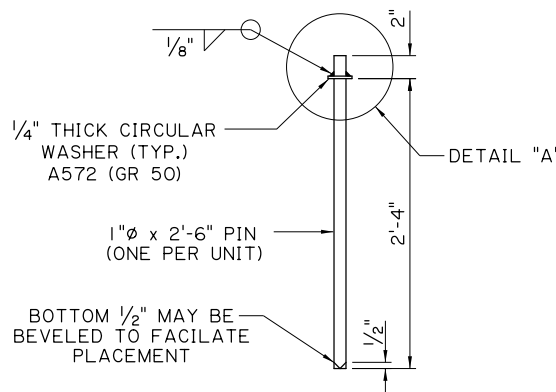
SIDE VIEW

3/4" DIA. BAR
2"Ø PIN

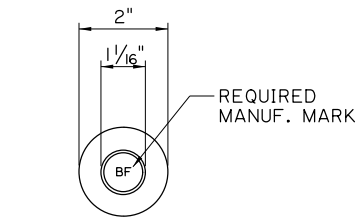
ESTIMATED QUANTITIES-ONE (1) 15'-0" PRECAST BARRIER				
BAR	NO.	UNIT LENGTH	TOTAL LENGTH	LOCATION
401	8	14'-4"	114'-8"	LONGITUDINAL
402	24	3'-6 1/4"	84'-6"	STIRRUPS
403	6	3'-11 7/8"	23'-11 1/4"	PINNING HOLE
TOTAL NO. 4 BARS = 223'-1 1/4" = 149 LBS.				
DEFORMED REINFORCING STEEL=149 LBS.				
6-3/4"Ø BAR (A 36 STEEL) = 41'-9" = 63 LBS.				
CLASS "PI" CONCRETE= 1.76 CU. YDS.				
BARRIER WEIGHT= 7,136 LBS.				



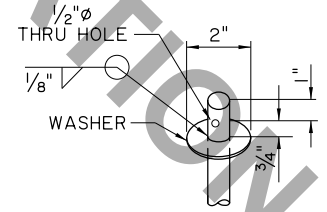
DETAIL "B"



1"Ø CONNECTING PIN DETAIL
TO BE INSERTED BETWEEN BARRIERS



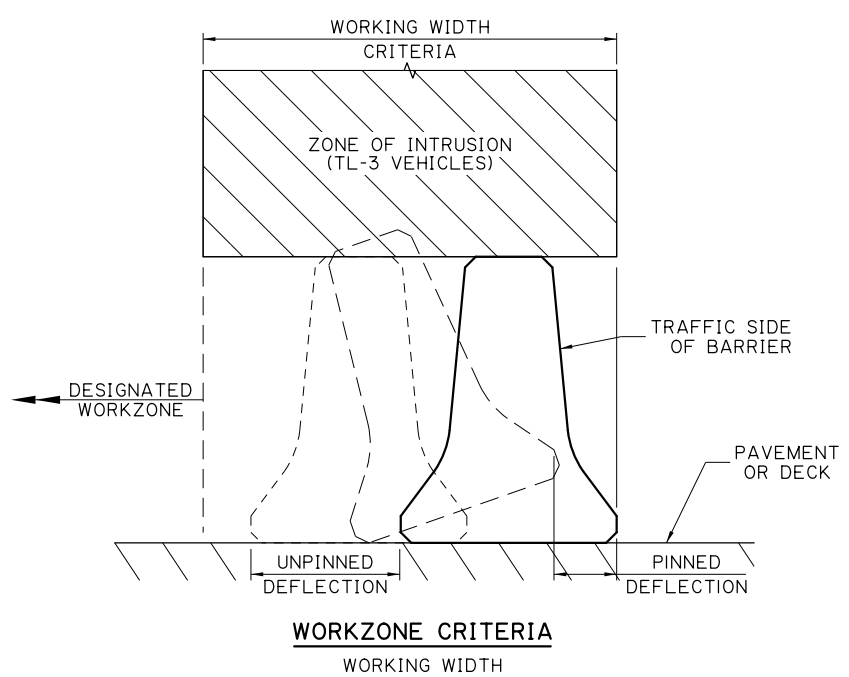
TOP VIEW 1"Ø PIN



DETAIL "A"

NOTES:

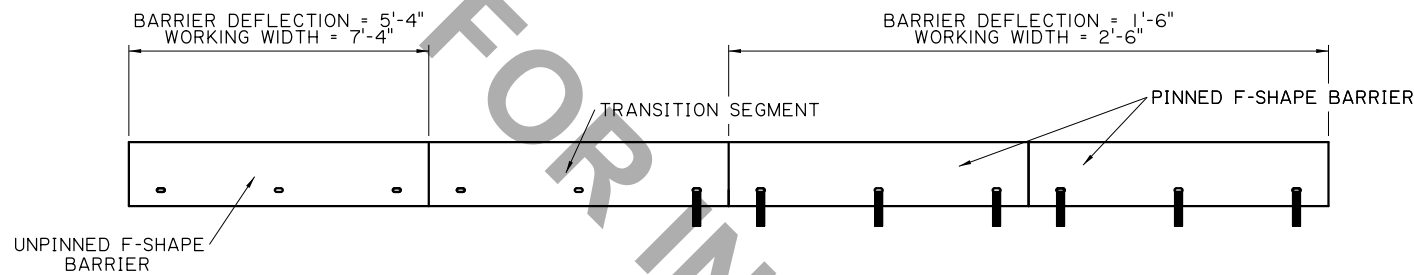
- INSTALL TEMPORARY PRECAST CONCRETE BARRIERS PARALLEL TO THE DIRECTION OF TRAFFIC IN WORK ZONES. THESE DETAILS HAVE BEEN SUCCESSFULLY CRASH TESTED AS A MASH TEST LEVEL 3 BARRIER.
 - NO OBSTRUCTION IS ALLOWED WITHIN THE CORRESPONDING WORKING WIDTH OF THE PINNED OR UNPINNED BARRIER, MEASURED FROM THE FRONT/TRAFFIC FACE OF THE BARRIER.
 - WORKERS ARE PERMITTED IN THE DESIGNATED WORKZONE.
- UNPINNED BARRIERS ARE ASSUMED TO DEFLECT 5'-4" AND HAVE A WORKING WIDTH OF 7'-4". INSTALL BARRIERS ON PAVEMENT OR BRIDGE DECKS AND APPROACH SLABS.
- BARRIER PINNING REQUIREMENTS WHEN PINNED TO BRIDGE DECK OR PCC PAVEMENT:
 - DRILL HOLES IN BRIDGE DECK OR PCC PAVEMENT AND PLACE ANCHOR PINS THROUGH BARRIER HOLES AND INTO DECK OR PAVEMENT. DO NOT CUT REINFORCING BARS TO FACILITATE PIN PLACEMENT. AFTER BARRIER REMOVAL, FILL CONCRETE HOLES WITH A NON-SHRINK GROUT LISTED ON DOTD APPROVED MATERIALS LIST.
 - PIN BARRIERS TO ALL BRIDGE DECK DROP-OFFS.
 - MAINTAIN AT LEAST 9" BETWEEN BACK FACE OF BARRIER AND EDGE OF BRIDGE DECK OR PCC PAVEMENT AND ASSUME 1'-10" DEFLECTION AND DESIGN FOR 2'-7" WORKING WIDTH.
- BARRIER PINNING REQUIREMENTS WHEN PINNED TO ASPHALT:
 - DRILL HOLES IN ASPHALT PAVEMENT AND PLACE ANCHOR PINS THROUGH BARRIER HOLES AND INTO ASPHALT PAVEMENT. SUBMIT REPAIR METHOD FOR ASPHALT PAVEMENT FOR REVIEW BEFORE REMOVAL OF BARRIERS.
 - MAINTAIN AT LEAST 12" BETWEEN BACK FACE OF BARRIER AND EDGE OF PAVEMENT AND ASSUME 1'-6" DEFLECTION AND DESIGN FOR 2'-6" WORKING WIDTH.
- CAST 4"Ø CIRCULAR EMBLEM INTO BARRIER TOP FACE WITH EMBLEM CENTER ON BARRIER LONGITUDINAL CENTERLINE AND SPACED 1'-9" FROM ONE BARRIER END. SHOW THE FOLLOWING ON THE EMBLEM:
 MANUFACTURER NAME, LOGO, OR INITIALS
 BARRIER FABRICATION YEAR
 STANDARD PLAN DATE USED (MM/YY)
- PROVIDE 1"Ø CONNECTING PINS CONFORMING TO ASTM A449 AND 1.5"Ø ANCHOR PINS AND 3/4"Ø BARS CONFORMING TO ASTM A36. GALVANIZE PINS AND BAR IN ACCORDANCE WITH SECTION 811.
 FORGED PINS (A449) CAN BE SUBSTITUTED FOR THE 1"Ø CONNECTING PIN, PROVIDED THE SAME DIMENSIONS OF THE FABRICATED PIN ARE MET.
- PROVIDE REINFORCING STEEL HAVING 60 KSI YIELD STRENGTH. PROVIDE 2" CLEAR COVER UNLESS OTHERWISE SPECIFIED.
 WELDED WIRE REINFORCEMENT CAN BE SUBSTITUTED FOR THE 401 AND 402 BARS. MATCH OR EXCEED THE AREA OF STEEL OF #4 BARS AND MATCH OR EXCEED THE 60 KSI YIELD STRENGTH. BEND WIRE MESH TO FORM STIRRUP SHAPE OF 402 BAR. PROVIDE WIRE IN THE SAME LOCATIONS AS THE 401 AND 402 BARS.
- USE CLASS PI CONCRETE. PROVIDE ALL BARRIERS WITH 4" X 1 7/8" SLOTTED PINNING HOLES.
- WHEN TRAFFIC IS ON BOTH SIDES OF THE BARRIER, PLACE ANCHOR PINS IN THE PINNING HOLES ON BOTH SIDES OF EACH BARRIER AT THE LOCATIONS SHOWN IN THE PINNING DETAILS DOUBLING THE ESTIMATED QUANTITY OF PINS.



WORKZONE CRITERIA
WORKING WIDTH

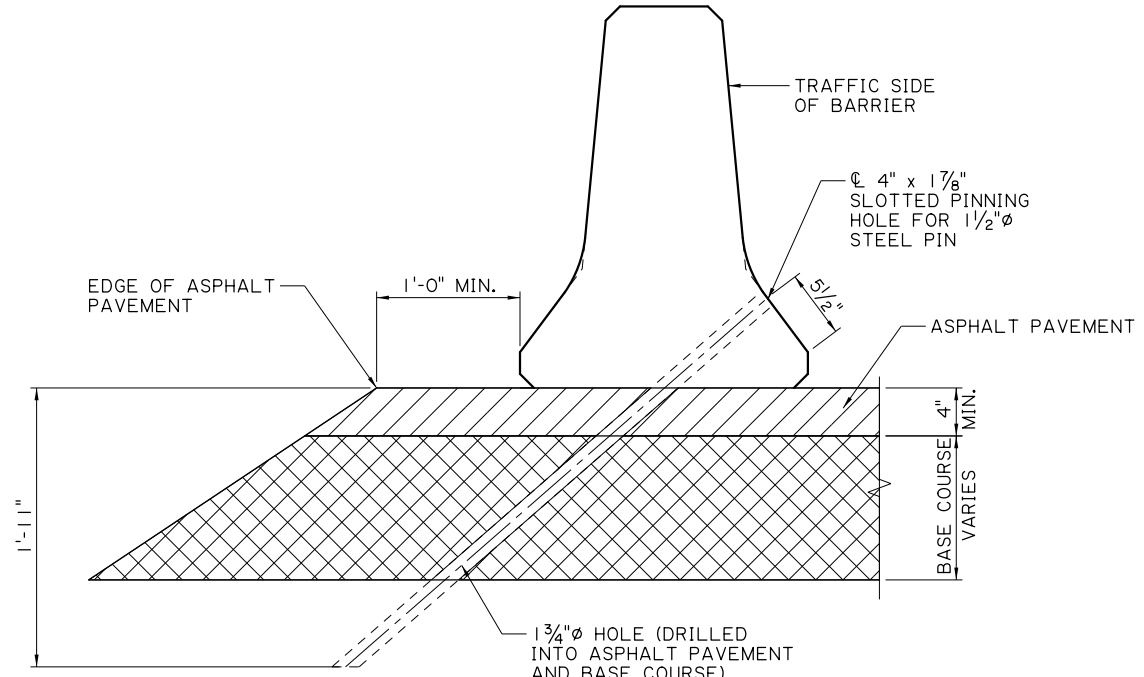
STATE OF LOUISIANA
 DEPARTMENT OF TRANSPORTATION & DEVELOPMENT
 BR-TEMP
 STANDARD PLAN
 BD-7.3.1.02
 TEMPORARY PRECAST BARRIER
 MASH F-SHAPE (TL-3)
 REINFORCEMENT DETAILS, CONNECTOR
 PIN DETAILS, QUANTITIES AND NOTES
 DATE: 3/25/2026
 APPROVED BY CHIEF ENGINEER: [Signature]
 DESIGN: K. BRAUNER, C. GAUDRY
 CHECK: C. GAUDRY, K. BRAUNER
 REVIEW: C. GAUDRY
 SERIES: 2 OF 3
 SHEET NUMBER





TRANSITION TO PINNED BARRIERS IN ASPHALT PAVEMENT

PINNED BARRIERS REQUIRE 3 PINS FOR ASPHALT PAVEMENT
TRANSITION SEGMENT REQUIRES 1 PIN, AS SHOWN



TYPICAL PINNING DETAIL

ASPHALT PAVEMENT
PIN FROM OPPOSITE SIDE
NOT SHOWN FOR CLARITY

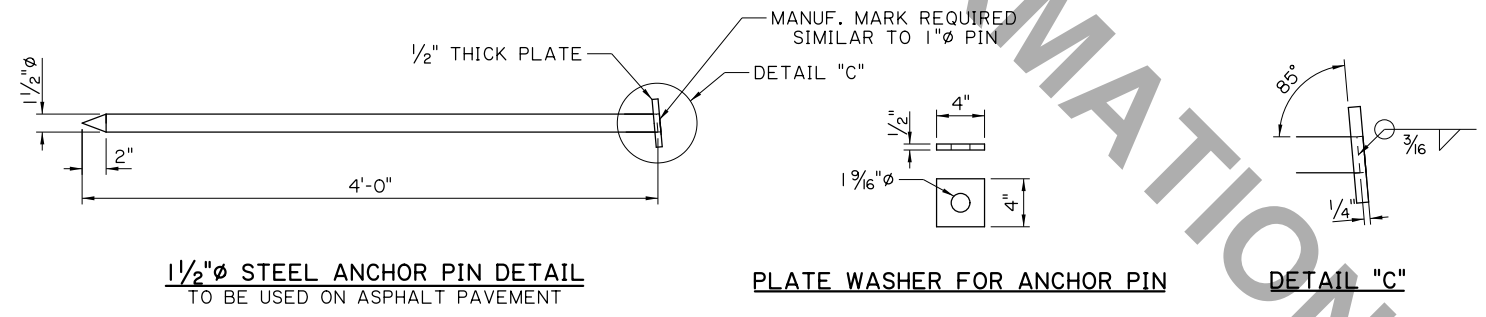
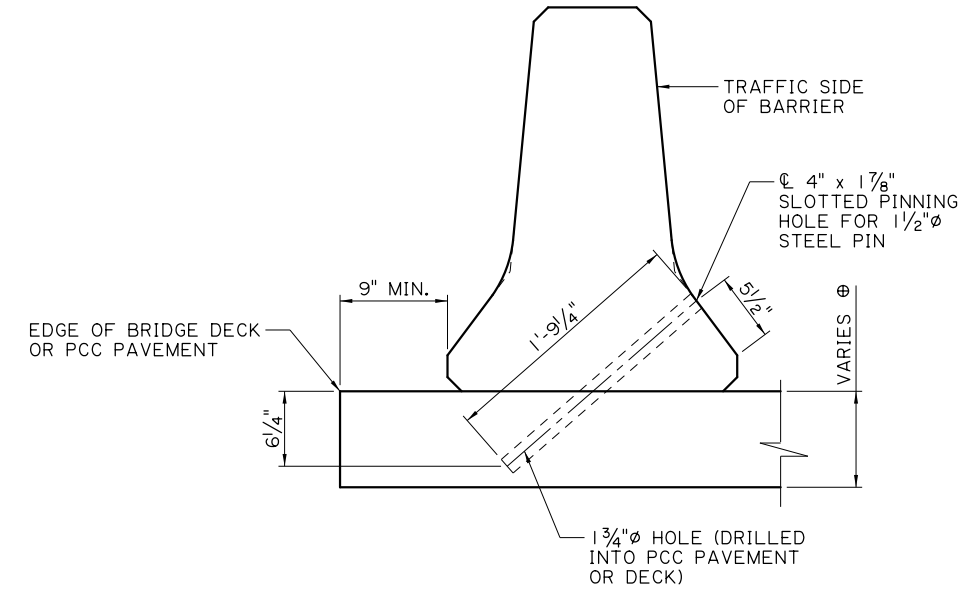


PLATE WASHER FOR ANCHOR PIN

DETAIL "C"

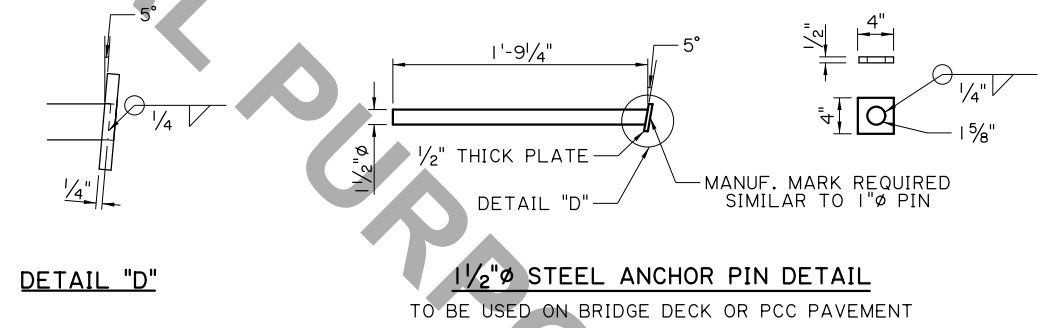
ASPHALT PAVEMENT

7" MINIMUM THICKNESS BRIDGE DECK
8" MINIMUM THICKNESS PCC PAVEMENT



TYPICAL PINNING DETAIL

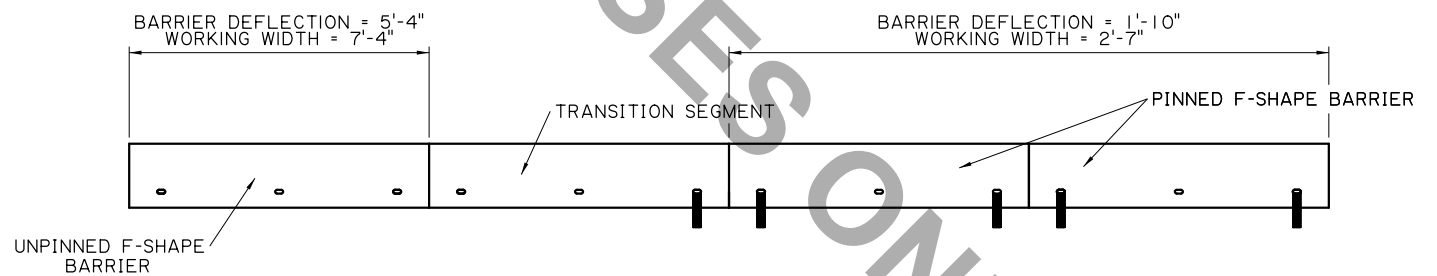
BRIDGE DECK OR PCC PAVEMENT
PIN FROM OPPOSITE SIDE
NOT SHOWN FOR CLARITY



DETAIL "D"

1 1/2" ϕ STEEL ANCHOR PIN DETAIL

TO BE USED ON BRIDGE DECK OR PCC PAVEMENT



TRANSITION TO PINNED BARRIERS IN PCC PAVEMENT

PINNED BARRIERS REQUIRE 2 PINS FOR PORTLAND CEMENT CONCRETE SURFACES
TRANSITION SEGMENT REQUIRES 1 PIN, AS SHOWN

BRIDGE DECK OR
CONCRETE PAVEMENT

SHEET NUMBER		PARISH		CONTROL SECTION		STATE PROJECT	
DESIGN	K. BRAUNER	CHECK	C. GAUDRY	DETAIL	J. DOUCET	CHECK	C. GAUDRY
APPROVED BY CHIEF ENGINEER:	[Signature]		REVIEW	C. GUIDRY	SERIES #	3 OF 3	
DATE:	3/25/2024		REVISION OR CHANGE ORDER DESCRIPTION	NO.	DATE		
TEMPORARY PRECAST BARRIER MASH F-SHAPE (TL-3) PINNED BARRIER DETAILS AND TRANSITIONS TO UNPINNED CONDITIONS BD-7.3.1.03 STANDARD PLAN BR-TEMP							
LOUISIANA DEPARTMENT OF TRANSPORTATION & DEVELOPMENT BRIDGE AND STRUCTURAL DESIGN							