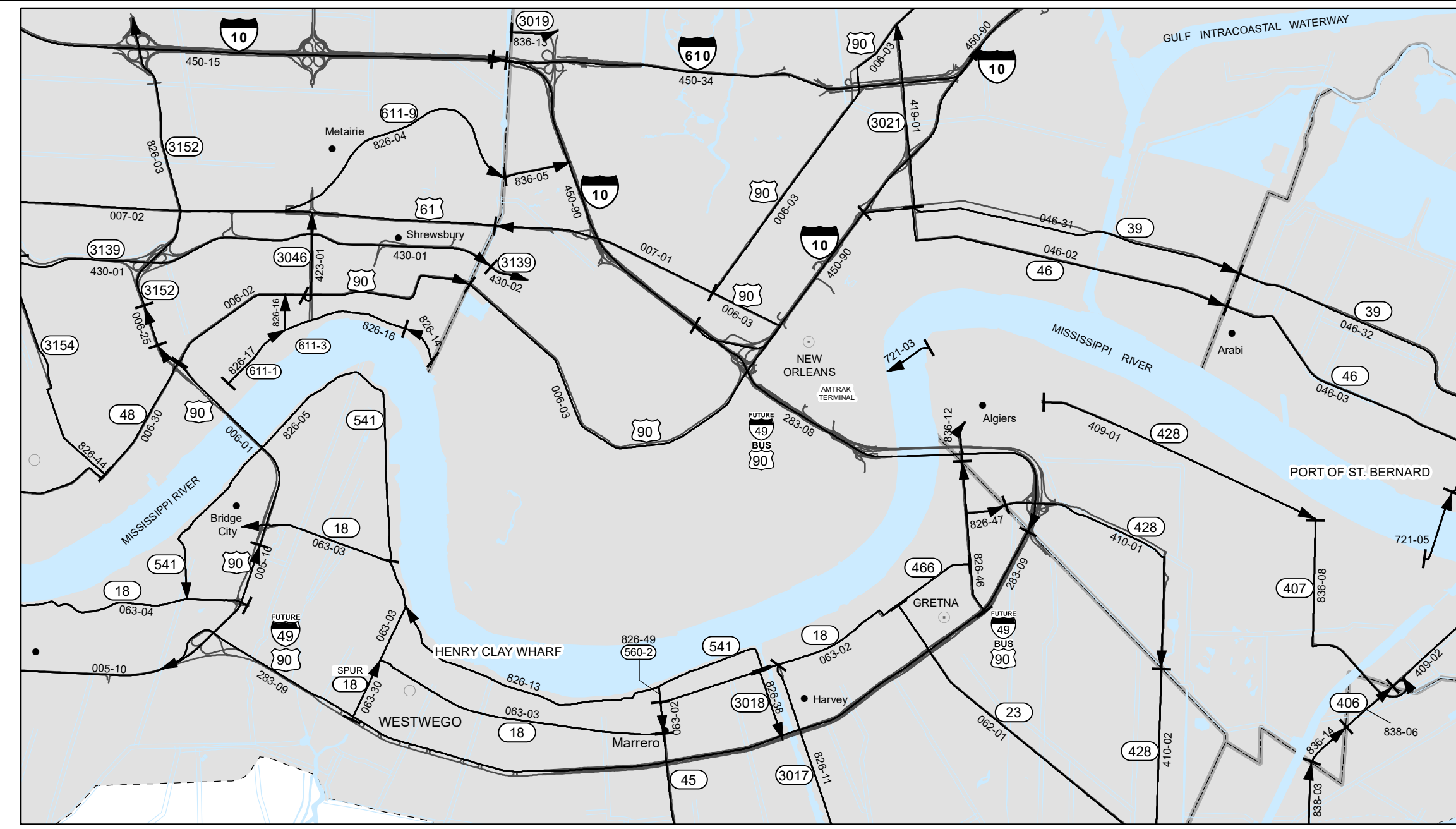
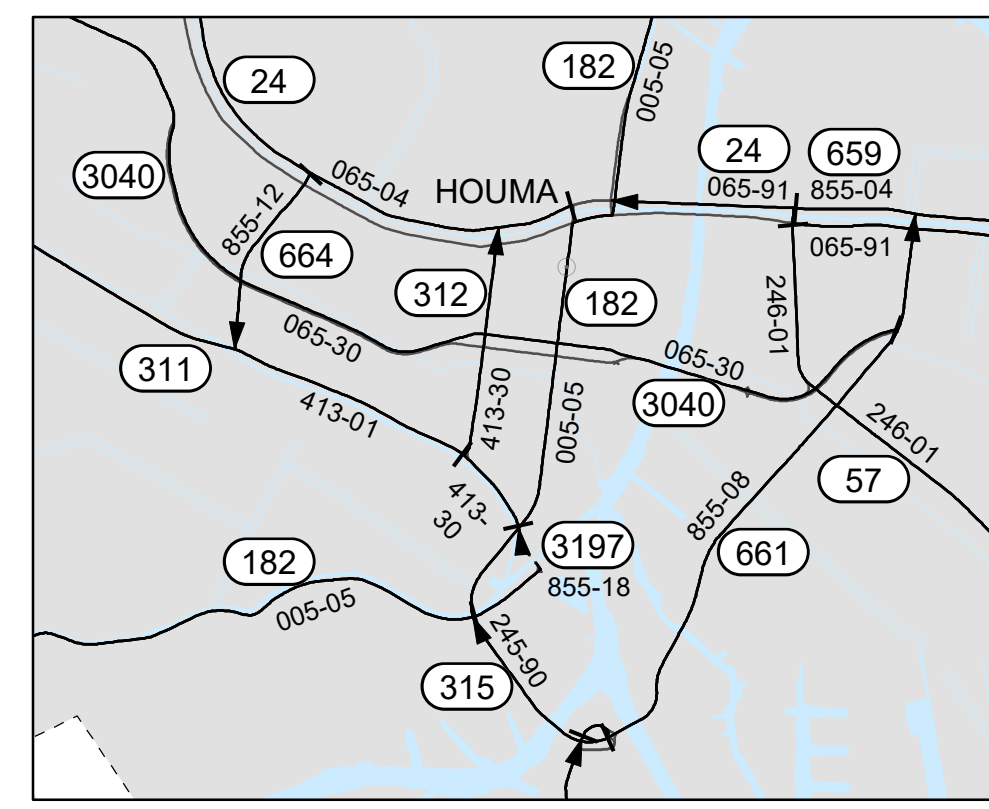


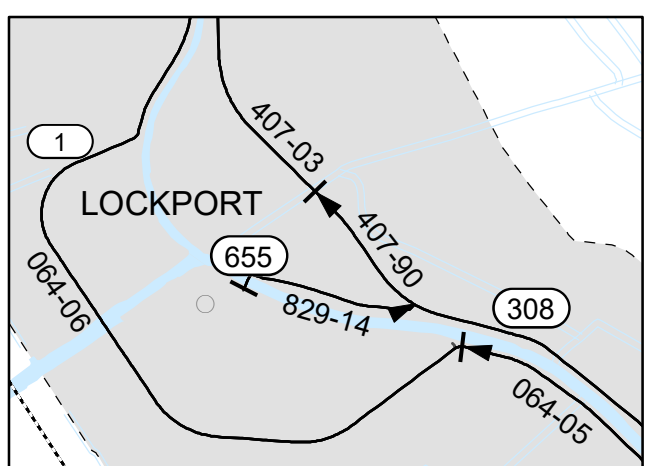
- PARISH SEATS
- MUNICIPALITIES
- COMMUNITIES
- INTERSTATE HIGHWAY
- U. S. HIGHWAY
- STATE HIGHWAY
- CONTROL SECTIONS AND NUMBERS
- PROPOSED ROADS
- OTHER CONNECTORS
- FERRY BOATS
- PARISH LINES
- WATER
- URBANIZED OR URBAN AREAS



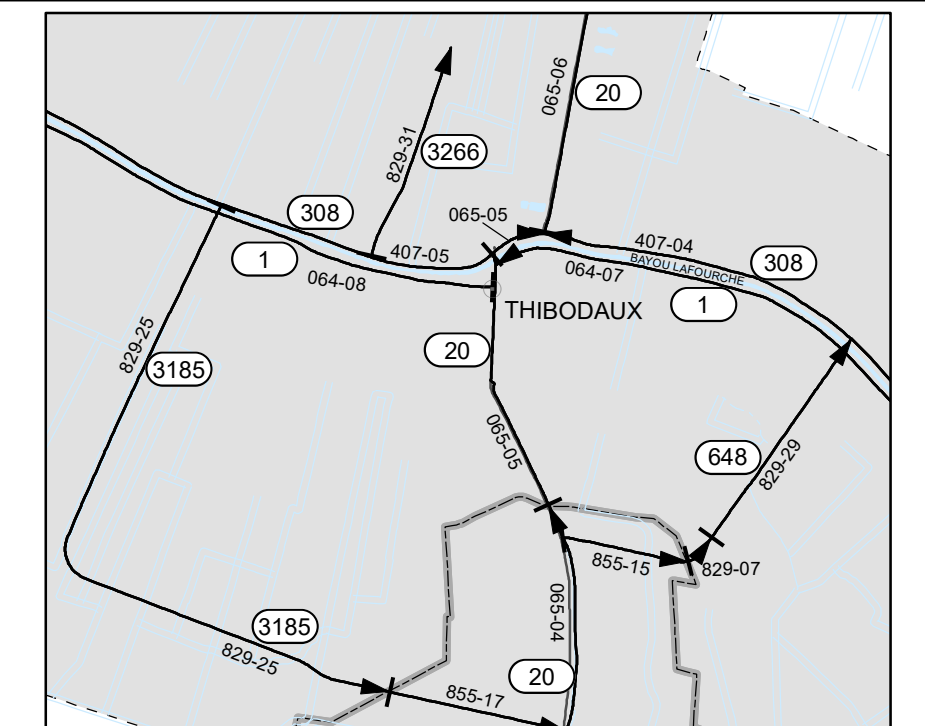
NEW ORLEANS



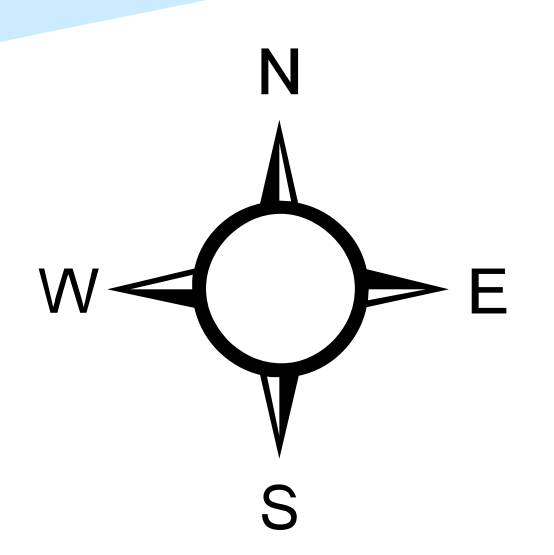
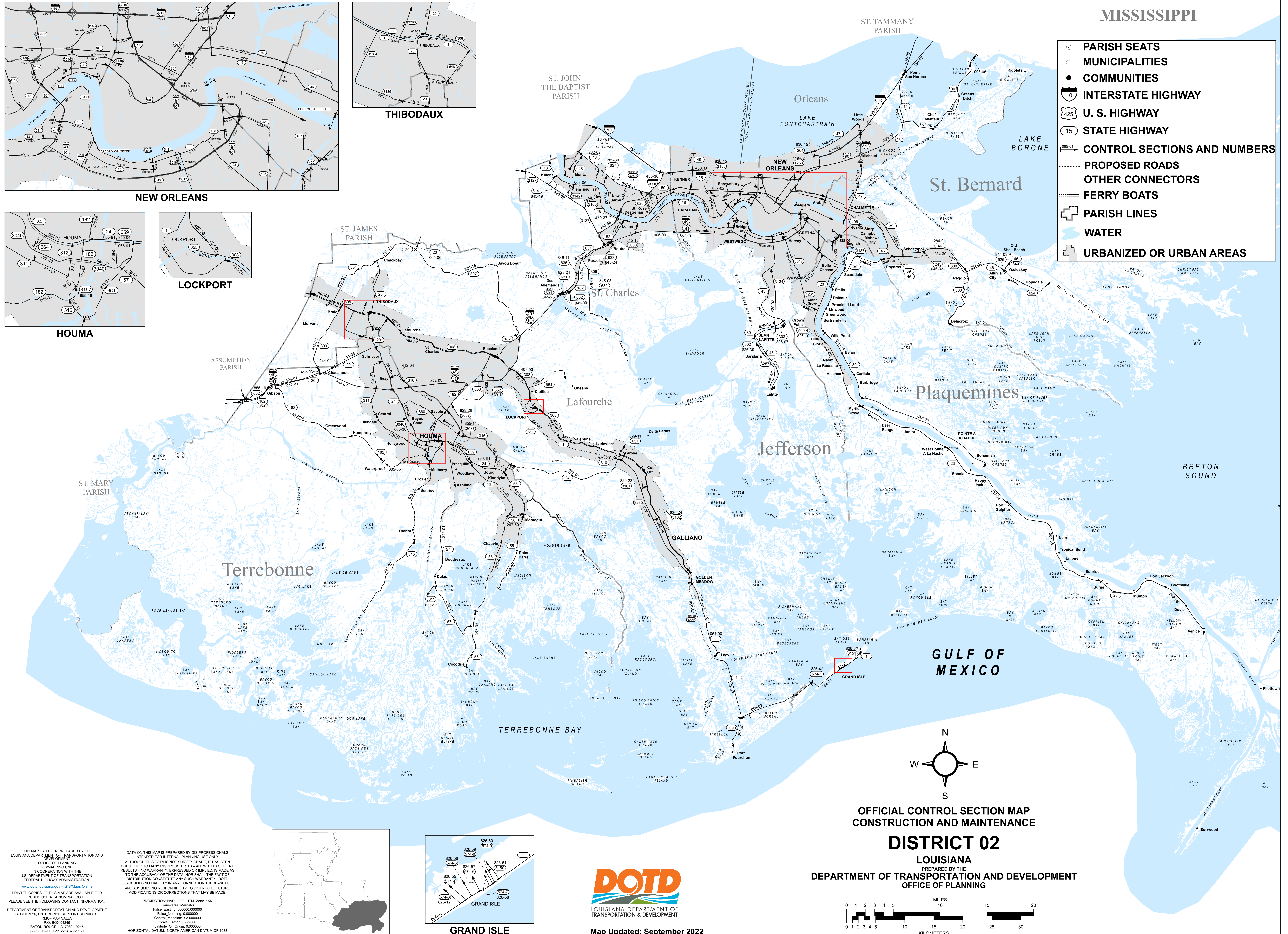
HOUMA



LOCKPORT



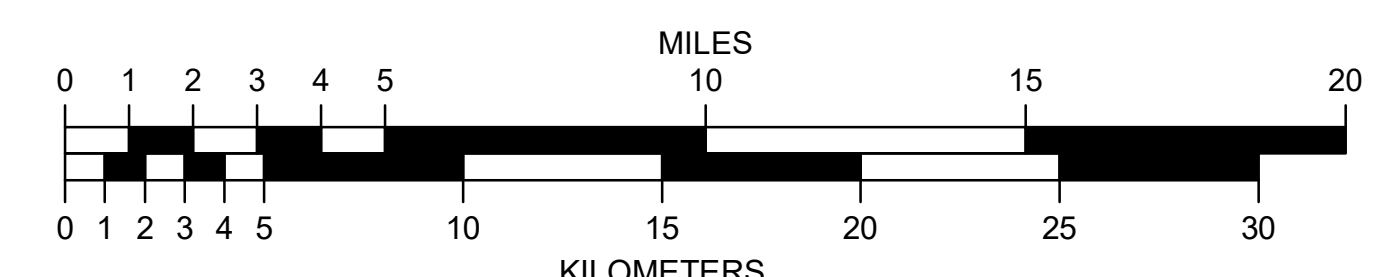
THIBODAUX



OFFICIAL CONTROL SECTION MAP
CONSTRUCTION AND MAINTENANCE

DISTRICT 02

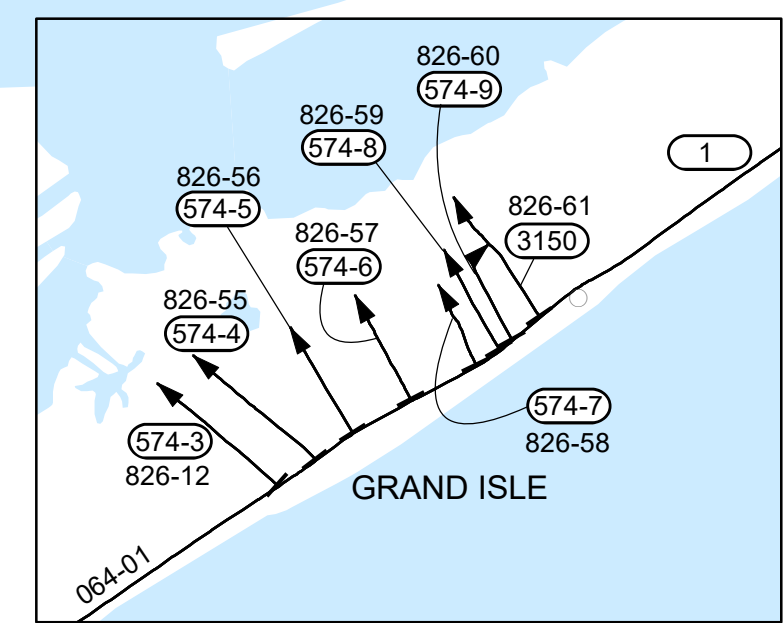
LOUISIANA
PREPARED BY THE
DEPARTMENT OF TRANSPORTATION AND DEVELOPMENT
OFFICE OF PLANNING



THIS MAP HAS BEEN PREPARED BY THE LOUISIANA DEPARTMENT OF TRANSPORTATION AND DEVELOPMENT OFFICE OF PLANNING GIS MAPPING UNIT IN COOPERATION WITH THE U.S. DEPARTMENT OF TRANSPORTATION-FEDERAL HIGHWAY ADMINISTRATION. PRINTED COPIES OF THIS MAP ARE AVAILABLE FOR PUBLIC USE AT A NOMINAL COST. PLEASE SEE THE FOLLOWING CONTACT INFORMATION: DEPARTMENT OF TRANSPORTATION AND DEVELOPMENT SECTION 26, ENTERPRISE SUPPORT SERVICES, RMJ - MAP SALES P.O. BOX 9245 BATON ROUGE, LA 70804-9245 (225) 379-1107 or (225) 379-1190

DATA ON THIS MAP IS PREPARED BY GIS PROFESSIONALS INTENDED FOR INTERNAL PLANNING USE ONLY. ALTHOUGH THIS DATA IS NOT SURVEY GRADE, IT HAS BEEN SUBJECTED TO MANY RIGOROUS TESTS - ALL WITH EXCELLENT RESULTS - NO WARRANTY, EXPRESSED OR IMPLIED, IS MADE AS TO THE ACCURACY OF THE DATA. NOR SHALL THE FACT OF DISTRIBUTION CONSTITUTE ANY SUCH WARRANTY. DOTD ASSUMES NO LIABILITY IN ANY CONNECTION THEREWITH, AND ASSUMES NO RESPONSIBILITY TO DISTRIBUTE FUTURE MODIFICATIONS OR CORRECTIONS THAT MAY BE MADE.

PROJECTION: NAD 1983 UTM Zone 18N
Transverse Mercator
False Sighting: 500000.000000
False Northing: 0.000000
Central Meridian: -93.000000
Scale: Factor: 0.999600
Latitude Of Origin: 0.000000
HORIZONTAL DATUM: NORTH AMERICAN DATUM OF 1983



GRAND ISLE



Map Updated: September 2022