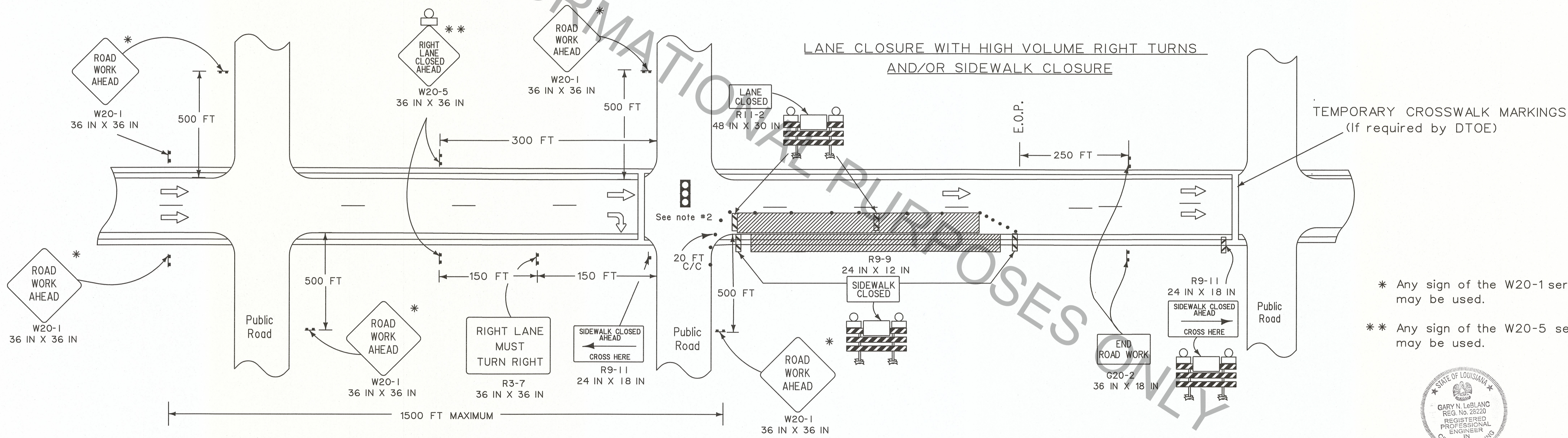


- LEGEND**
- ⬮ Traffic Sign
 - Channelizing Devices
 - ▨ Type III Barricades
 - ⬮ Flashing Arrow Board (Type 'C')
 - ▨ Work Area
 - ⬮ Type B Light
 - ➡ Direction of Travel



- * Any sign of the W20-1 series may be used.
- ** Any sign of the W20-5 series may be used.

STATE OF LOUISIANA
GARY N. LEBLANC
REG. No. 28220
REGISTERED PROFESSIONAL ENGINEER
IN
CIVIL ENGINEERING
6-27-18

- NOTES**
- This sheet shall be used with the Temporary Traffic Control General Notes Sheets TTC-00(A), TTC-00(B) and TTC-00(C).
 - This layout represents the minimum traffic controls required for lane closures in areas with a grid layout and with speed limits of 40 mph and below. This layout illustrates roadwork near a signal or a major intersection with or without sidewalks.
 - If a signal is involved in the construction zone, a specific temporary traffic signal timing and phasing plan for each phase of construction shall be developed.
 - Bicyclists and pedestrians, including those with disabilities, should be provided with access and reasonably safe passage through the TTC zone.
 - The sign height shall be at least 7 feet in business, commercial, and residential areas and also near parking, pedestrians, bicyclists, or other obstructions.
 - Place stop bars if work duration is greater than 3 days.
 - Place "Road Work Ahead" sign prior to an intersecting alternate route, no more than 1500 feet from the work area.
 - When crosswalks or other pedestrian facilities are closed or relocated, temporary facilities shall be detectable and shall include accessibility features consistent with the features in the existing pedestrian facility as defined in the MUTCD.
- ALL TTC STANDARDS SHOW MINIMUM CONSTRUCTION SIGNING.
ALL SITUATIONS SHALL BE REVIEWED AND/OR DESIGNED BY THE ENGINEER.
CONTRACTORS ARE RESPONSIBLE FOR COMPLYING WITH ALL TTC STANDARDS.

SHEET NUMBER		PARISH		DESIGNED		CHECKED		DATE	
		G. LEBLANC		J. COLVIN		C. FAKOURI		7/12/18	
CONTROL SECTION		STATE		PROJECT		SERIES		NUMBER	
REVISION OR CHANGE ORDER DESCRIPTION		BY		DATE		APPROVED BY		CHIEF ENGINEER	
TEMPORARY TRAFFIC CONTROL FOR LANE AND SIDEWALK CLOSURES IN URBAN AREAS WITH SPEED LIMIT LESS THAN OR EQUAL TO 40 MPH		TTC-10							
DOTD		TRAFFIC ENGINEERING							