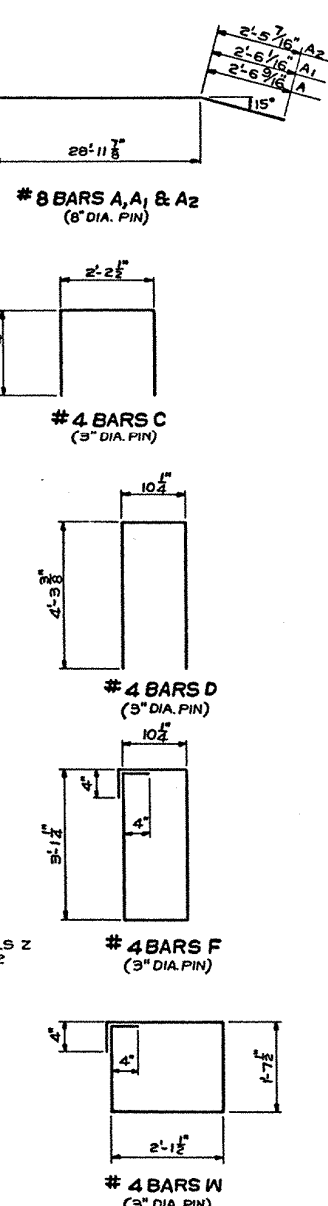
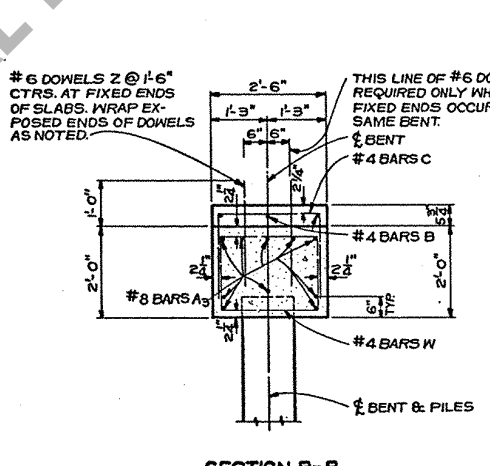
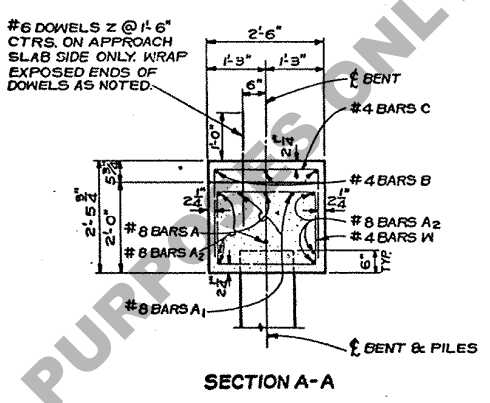
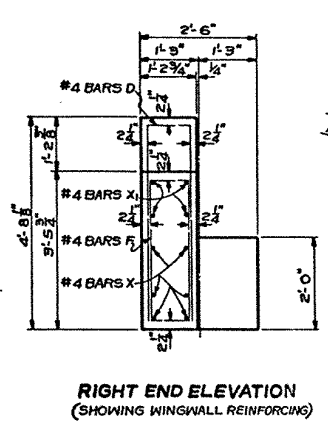
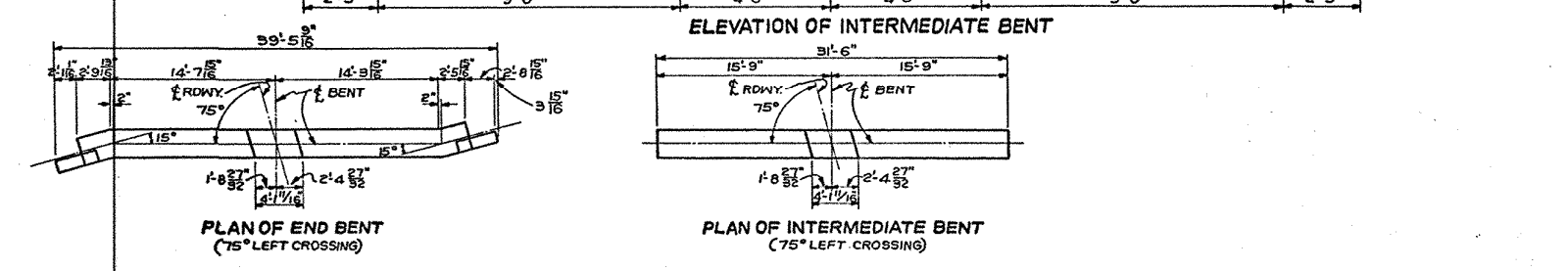
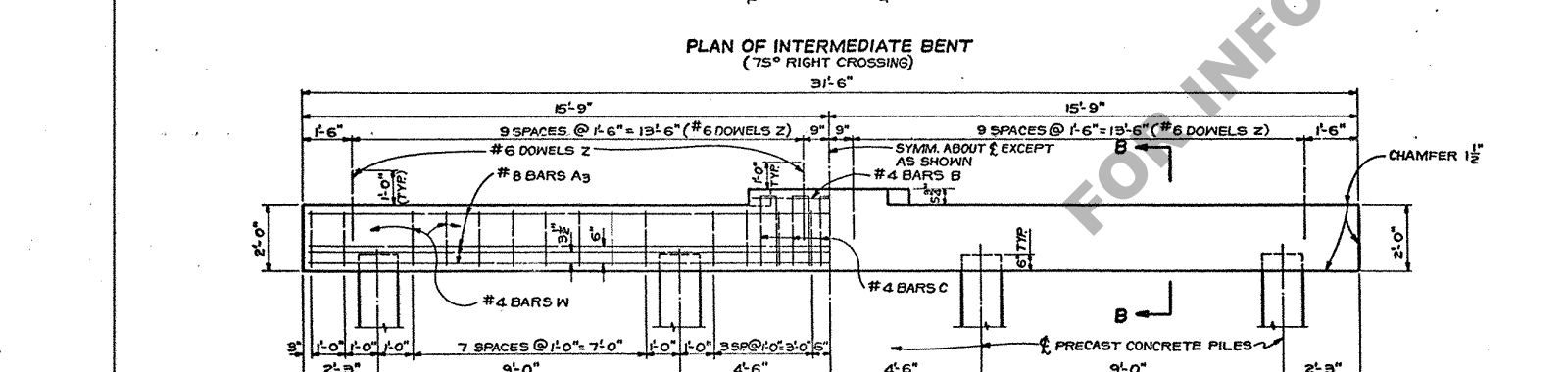
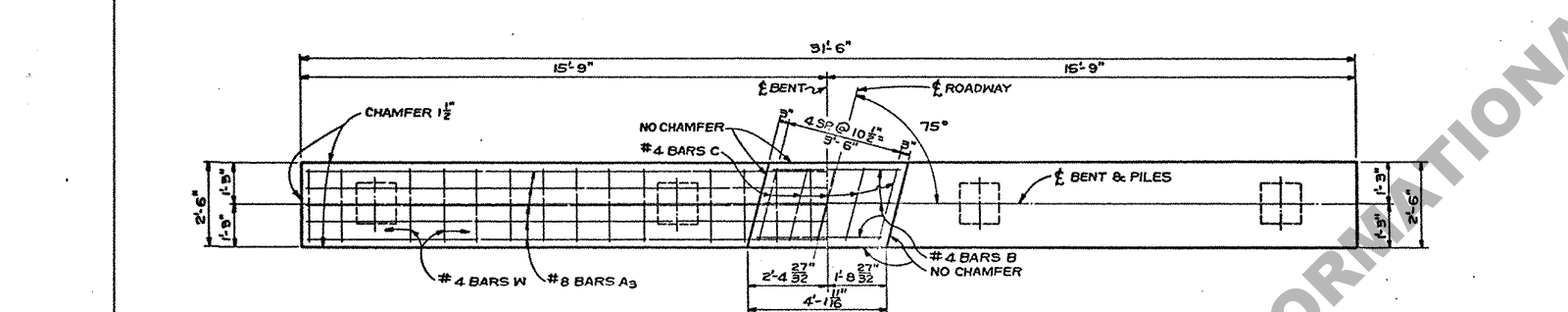
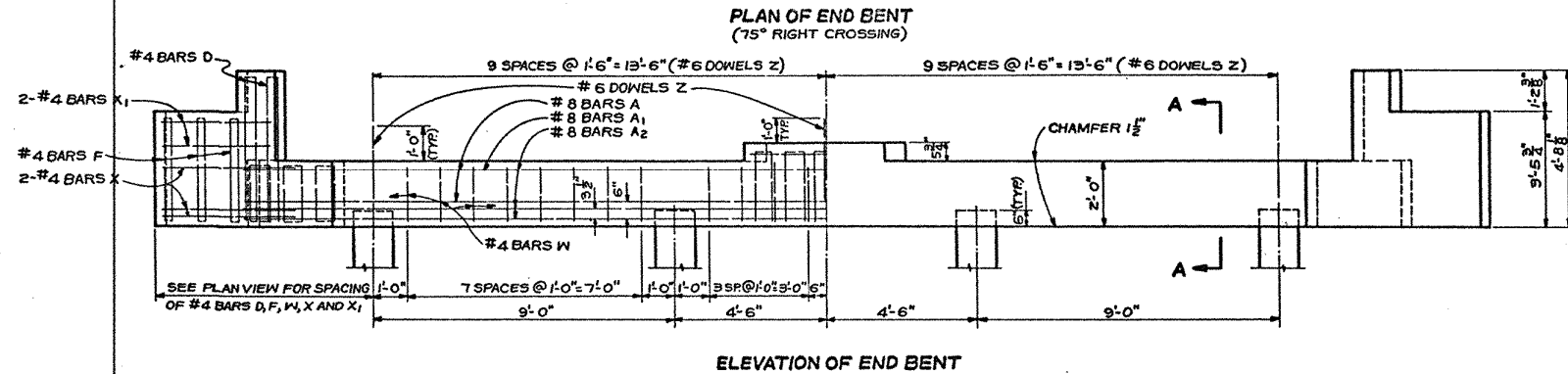
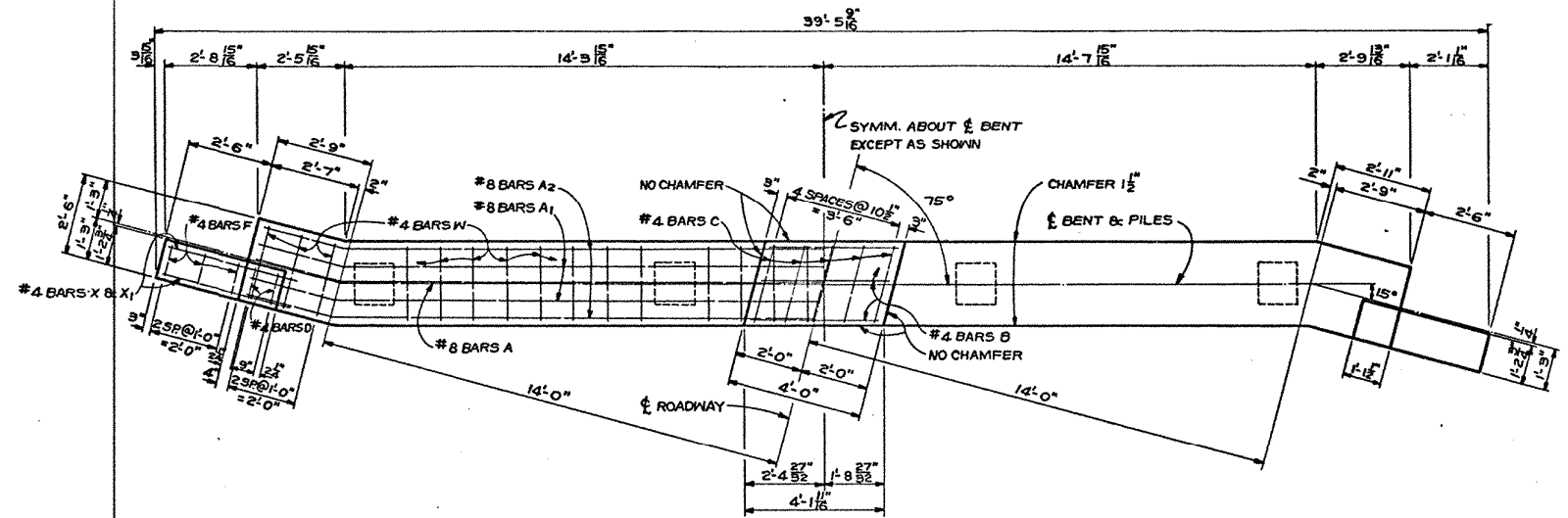


STATE PROJECT	PARISH	SHEET NO.



ESTIMATED QUANTITIES (END BENT)					
BAR	SIZE	Nº	UNIT LENGTH	TOTAL LENGTH	LOCATION
A	#8	2	34'-1"	68'-2"	LONG. IN CAP
A1	#8	2	34'-1"	68'-2"	LONG. IN CAP
A2	#8	6	34'-1"	204'-6"	LONG. IN CAP
TOTAL #8 BARS = 340'-10" = 910 LBS.					
Z	#6	19	2'-3"	42'-9"	DOWELS
TOTAL #6 BARS = 42'-9" = 64 LBS.					
B	#4	3	3'-9"	11'-3"	RISER
C	#4	5	6'-3"	31'-3"	RISER
D	#4	4	9'-5"	37'-8"	WINGWALL
F	#4	6	8'-7"	51'-6"	WINGWALL
X	#4	12	4'-0"	48'-0"	WINGWALL
X1	#4	8	3'-3"	26'-0"	WINGWALL
W	#4	30	8'-2"	245'-0"	STIRRUPS
TOTAL #4 BARS = 450'-8" = 301 LBS.					
TOTAL DEFORMED REINFORCING STEEL = 1275 LBS.					
* TOTAL CLASS "A" CONCRETE = 7.54 CU. YDS.					
φ AVERAGE PILE LOAD = 33.0 TONS					

ESTIMATED QUANTITIES (INTERMEDIATE BENT)					
BAR	SIZE	Nº	UNIT LENGTH	TOTAL LENGTH	LOCATION
A3	#8	10	31'-2"	311'-8"	LONG. IN CAP
TOTAL #8 BARS = 311'-8" = 832 LBS.					
Z	#6	20	2'-3"	45'-0"	DOWELS
TOTAL #6 BARS = 45'-0" = 68 LBS.					
B	#4	3	3'-9"	11'-3"	RISER
C	#4	5	6'-3"	31'-3"	RISER
W	#4	28	8'-2"	228'-8"	STIRRUPS
TOTAL #4 BARS = 271'-2" = 181 LBS.					
TOTAL DEFORMED REINFORCING STEEL = 1081 LBS.					
* TOTAL CLASS "A" CONCRETE = 5.92 CU. YDS.					
AVERAGE PILE LOAD = 33.0 TONS					

φ TO PROVIDE FOR FUTURE EXTENSION OF BRIDGE, END BENTS ARE DESIGNED FOR SAME LOAD AS INTERMEDIATE BENTS.

GENERAL NOTES:
 CONSTRUCTION SPECIFICATIONS: LATEST APPROVED L.A. DEPT. OF HIGHWAYS STANDARD SPECIFICATIONS.
 DESIGN SPECIFICATIONS: A.A.S.H.O. STANDARD SPECIFICATIONS FOR HIGHWAY BRIDGES 1961, AS AMENDED BY INTERIM SPECS. 1964.
 LIVE LOAD: HS 20-44.
 REINFORCING STEEL BARS SHALL BE INTERMEDIATE OR HARD GRADE, A.S.T.M. A15 OR A.S.T.M. A160 OR RAIL STEEL, A.S.T.M. A16 CONFORMING WITH A.S.T.M. A305.
 DIMENSIONS RELATING TO REINFORCING STEEL ARE TO BAR CENTERS. ALL CONCRETE TO BE CLASS "A".
 ALL CORNERS TO BE CHAMFERED 3/4" UNLESS OTHERWISE NOTED.
 ALL EXPOSED ENDS OF #6 DOWELS Z TO BE WRAPPED WITH 2 LAYERS OF 15 # TAR PAPER, CLOSE FITTING TUBES MADE OF COMPRESSIBLE MATERIAL NOT LESS THAN 3/16" THICK MAY BE SUBSTITUTED.
 TAR PAPER WRAPPINGS TO BE INCLUDED IN PRICE BID FOR CLASS "A" CONC. FOR DETAILS OF CONCRETE PILES SEE STD. PLAN AS SHOWN ON GEN. PLAN.
 ON END BENTS, ALL EXPOSED VERTICAL SURFACES AND CHAMFERS ON CAP TO HAVE A CLASS 2 RUBBED FINISH.
 ALL EXPOSED SURFACES ON WINGWALL BEYOND THE LIMITS OF THE EDGE OF BRIDGE SLAB TO HAVE A CLASS 2 RUBBED FINISH.
 ON INTERMEDIATE BENTS, ALL VERTICAL SURFACES AND CHAMFERS ABOVE THE LOW WATER OR GROUND LINE TO HAVE A CLASS 2 RUBBED FINISH.

BENTS			
STANDARD PLAN PRECAST CONCRETE PILE BENTS FOR 20'-0" CONCRETE SLAB SPANS LIVE LOAD: HS20-44 28'-0" ROADWAY 1'-6" SAFETY CURBS			
DATED: March 1, 1967			
STATE OF LOUISIANA DEPARTMENT OF HIGHWAYS			
DESIGNED	DETAILS	TRACED	
CHECKED	CHECKED	CHECKED	
BRIDGE DESIGN SECTION			

DATE	DESCRIPTION	BY
	REVISIONS	