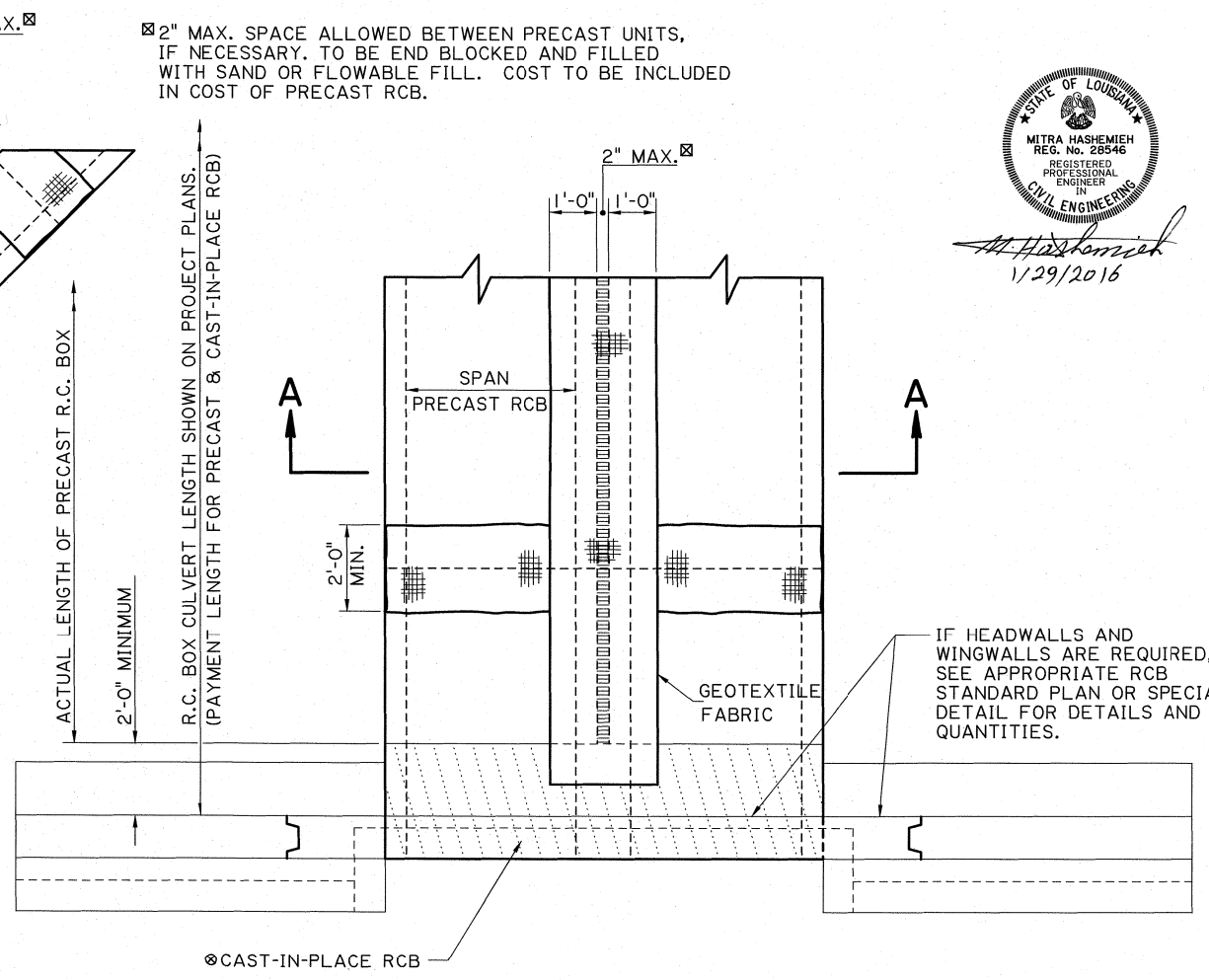
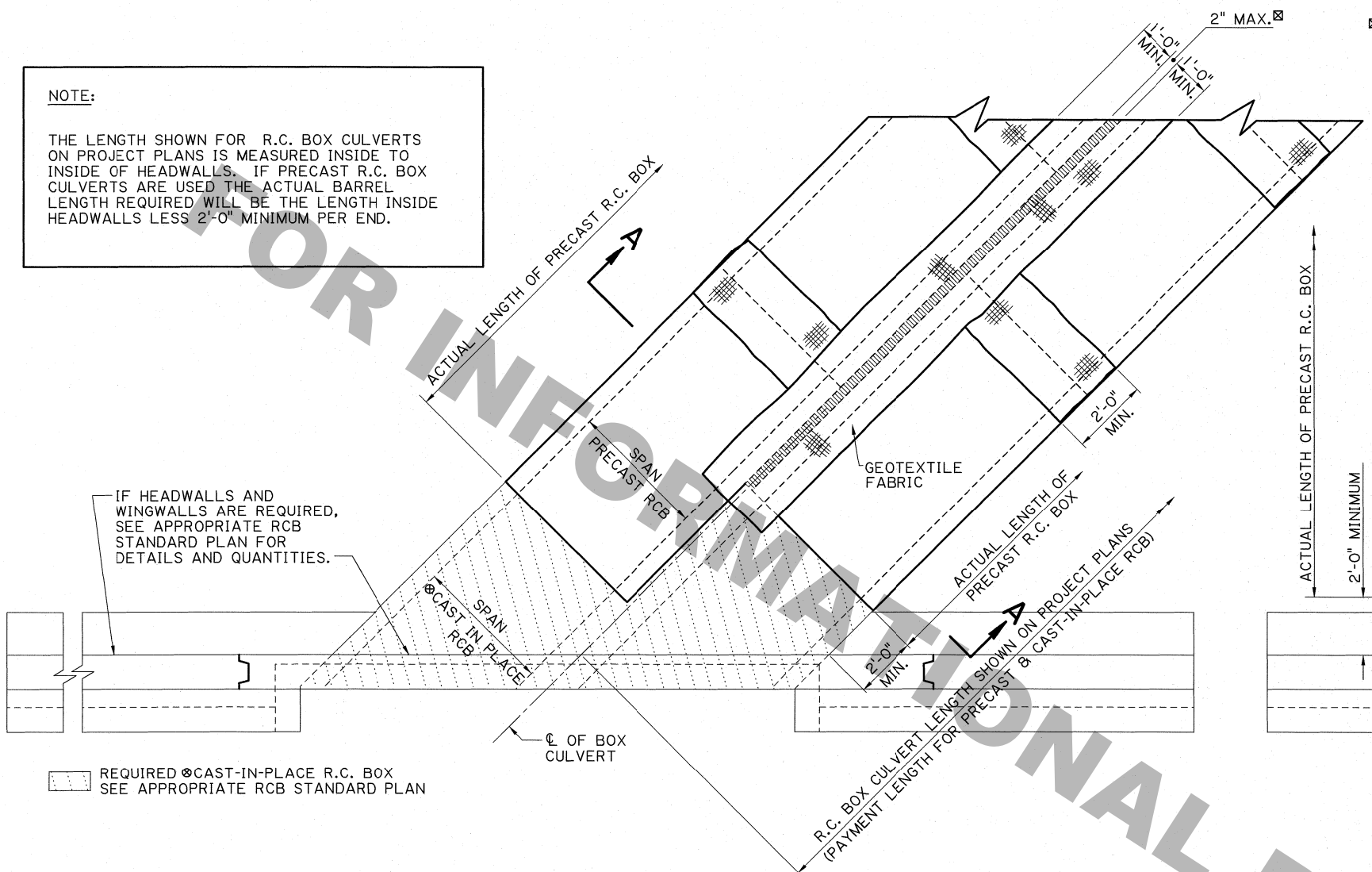




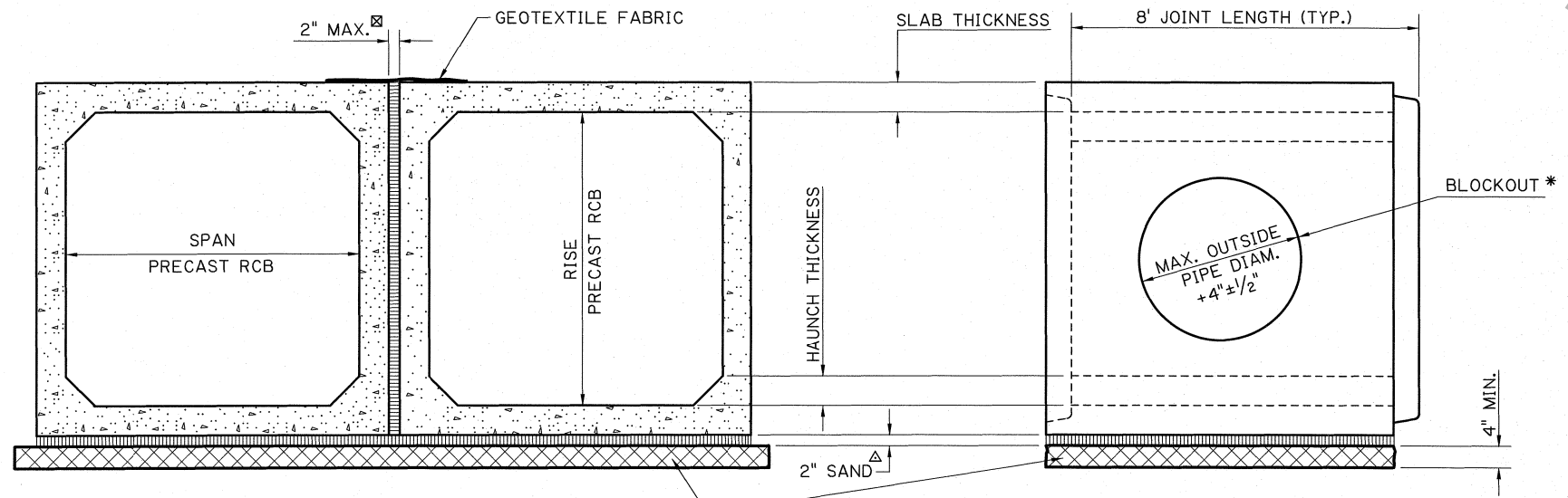
M. Hashemeh
1/29/2016

NOTE:
THE LENGTH SHOWN FOR R.C. BOX CULVERTS ON PROJECT PLANS IS MEASURED INSIDE TO INSIDE OF HEADWALLS. IF PRECAST R.C. BOX CULVERTS ARE USED THE ACTUAL BARREL LENGTH REQUIRED WILL BE THE LENGTH INSIDE HEADWALLS LESS 2'-0" MINIMUM PER END.



PLAN SHOWING MULTIPLE PRECAST RCB CULVERTS ON A SKEWED CROSSING WITH HEADWALLS

PLAN SHOWING MULTIPLE PRECAST RCB CULVERTS ON A STRAIGHT (90°) CROSSING WITH HEADWALLS



SECTION A-A

SIDE ELEVATION OF PIPE JOINT SHOWING MAXIMUM BLOCKOUT AND PIPE DIAMETER

GENERAL NOTES

- 1) FOR GENERAL SPECIFICATIONS OF PRECAST RCB SEE SECTION 805 AND 1016 OF THE LA DOTD STANDARD SPECIFICATIONS.
- 2) A MINIMUM 2 FOOT WIDE STRIP OF GEOTEXTILE FABRIC SHALL COVER THE ADJOINING LONGITUDINAL EDGES OF MULTI-BARREL BOXES AND JOINTS BETWEEN PRECAST UNITS. FABRIC EDGES AND ENDS SHALL BE SUITABLY SECURED. GEOTEXTILE FABRIC SPECIFICATIONS SHALL CONFORM TO THE SPECIFICATIONS FOR PIPE UNDER SECTION 1019 OF THE LA DOTD STANDARD SPECIFICATIONS. COST TO BE INCLUDED IN COST OF PRECAST RCB.
- 3) #4 DOWEL BARS, MINIMUM 20" LONG (10" EMBEDDED) AT 12" CENTERS ARE REQUIRED, TO CONNECT THE LAST PRECAST UNIT TO ANY CAST-IN-PLACE SECTION OF BOX.
- * 4) BLOCKOUTS FOR PIPE INTO PRECAST RCB'S ARE THE RESPONSIBILITY OF THE CONTRACTOR. BLOCKOUT LOCATIONS ARE AS DIRECTED BY THE PROJECT ENGINEER. BLOCKOUT SHALL NOT BE GREATER THAN 1/2 THE RISE OF PRECAST RCB AND SHALL NOT BE LOCATED IN THE HAUNCH.
- Δ 5) IN ADDITION TO BEDDING MATERIAL, A MINIMUM 4 INCH THICK, CLASS R CONCRETE, WORKING TABLE WILL BE REQUIRED FOR 6' X 6' AND LARGER PRECAST RCB FIELD INSTALLATIONS. AN ADDITIONAL 2 INCHES OF SAND MAY BE PLACED AND LEVELED UPON THE CONCRETE WORKING TABLE. COST OF WORKING TABLE AND SAND TO BE INCLUDED IN COST OF PRECAST RCB.
- ⊙ 6) FOR THE CAST-IN-PLACE PORTIONS OF THE CULVERT, THE REBAR SIZE AND SPACING SHALL MATCH OR EXCEED THE PRECAST SECTIONS. CONTRACTOR TO USE APPROVED PRECAST RCB SHOP DRAWING FOR REBAR REQUIREMENTS.

SHEET NUMBER		PARISH	CONTROL SECTION	STATE PROJECT
DESIGNED	CHECKED	DETAILED	CHECKED	SERIES NUMBER
MH	MH	KAJ	JCM	11-17-92
Rev. Working Table, Notes, Spac. Between RCB Units	Rev. Working Table, Notes, Spac. Between RCB Units	Rev. Skewed Crossing Details, Working Table, Notes	Rev. To Show Staggered Precast RCB, Working Table	1 OF 1
1-28-16	Added Note 6	5-15-12	Rev. To Show Staggered Precast RCB, Working Table	
5-15-12		11-15-10	Rev. Notes: Working Table, Max. Blockout Diam.	
4		8-14-09		
3		6-12-09		
2				
REVISION OR CHANGE ORDER DESCRIPTION				
NO.				
DATE				
BY				
MH				
MH				
MH				
MH				
MH				



PRECAST REINFORCED CONCRETE BOX CULVERTS DETAILS AND SPECIFICATIONS
SPECIAL DETAIL PRCB-01

