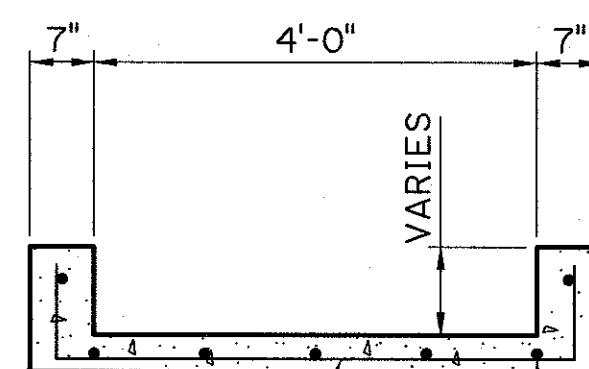


GENERAL NOTES:

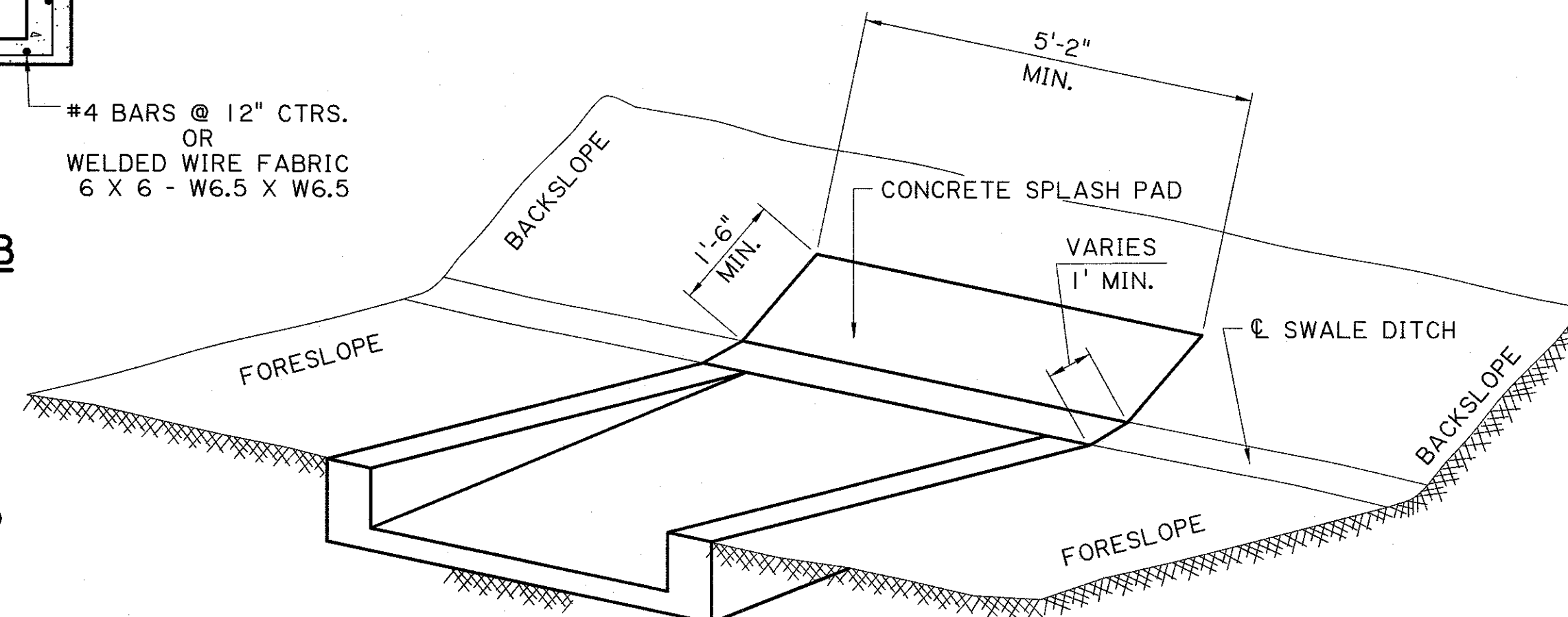
1. THIS STRUCTURE MEETS ALL DOTD HYDRAULIC PERFORMANCE CRITERIA WHEN USED IN ACCORDANCE WITH THE DOTD HYDRAULICS MANUAL AND ALL DOTD HYDRAULIC DESIGN POLICIES.
2. CONSTRUCTION SPECIFICATIONS: LATEST APPROVED LA DOTD STANDARD SPECIFICATIONS.
3. ALL EXPOSED CORNERS TO HAVE $\frac{3}{4}$ " CHAMFER UNLESS OTHERWISE NOTED.
4. DIMENSIONS RELATING TO REINFORCING STEEL FABRICATION ARE OUT-TO-OUT OF BARS AND DIMENSIONS RELATING TO REINFORCING STEEL SPACING ARE CENTER-TO-CENTER OF BARS.
5. REINFORCING STEEL SHALL HAVE 2" COVER UNLESS OTHERWISE SPECIFIED.
6. IF PRECAST CATCH BASIN IS USED, PLEASE REFER TO STANDARD PLAN PC-01 FOR DETAILS AND SPECIFICATIONS.



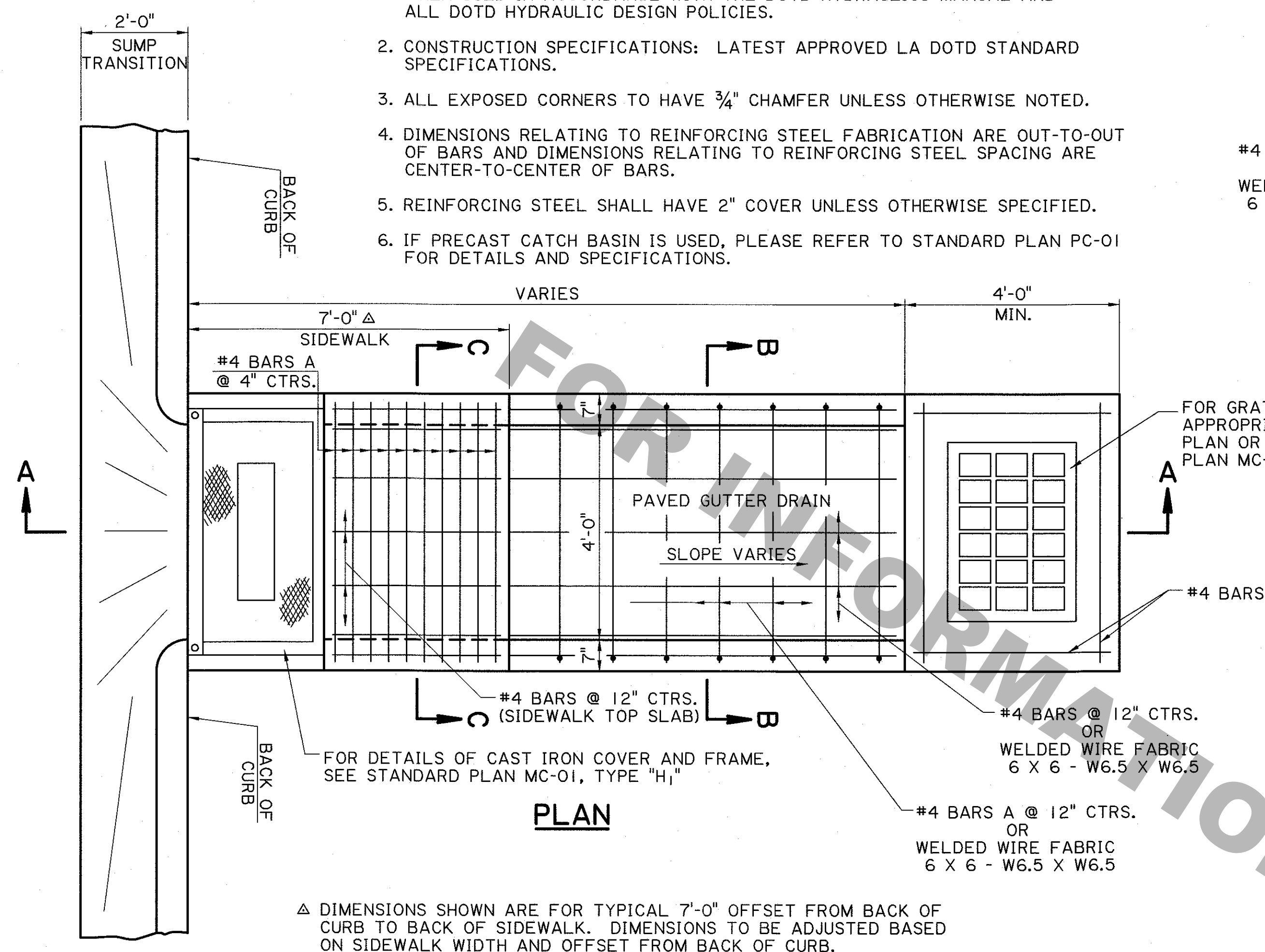
#4 BARS A @ 12" CTRS.
OR
WELDED WIRE FABRIC
6 X 6 - W6.5 X W6.5

#4 BARS @ 12" CTRS.
OR
WELDED WIRE FABRIC
6 X 6 - W6.5 X W6.5

SECTION B-B

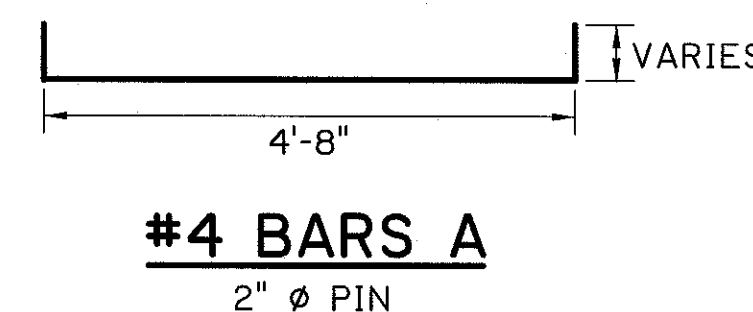


PARTIAL VIEW SHOWING PAVED GUTTER DRAIN WITHOUT DROP INLET

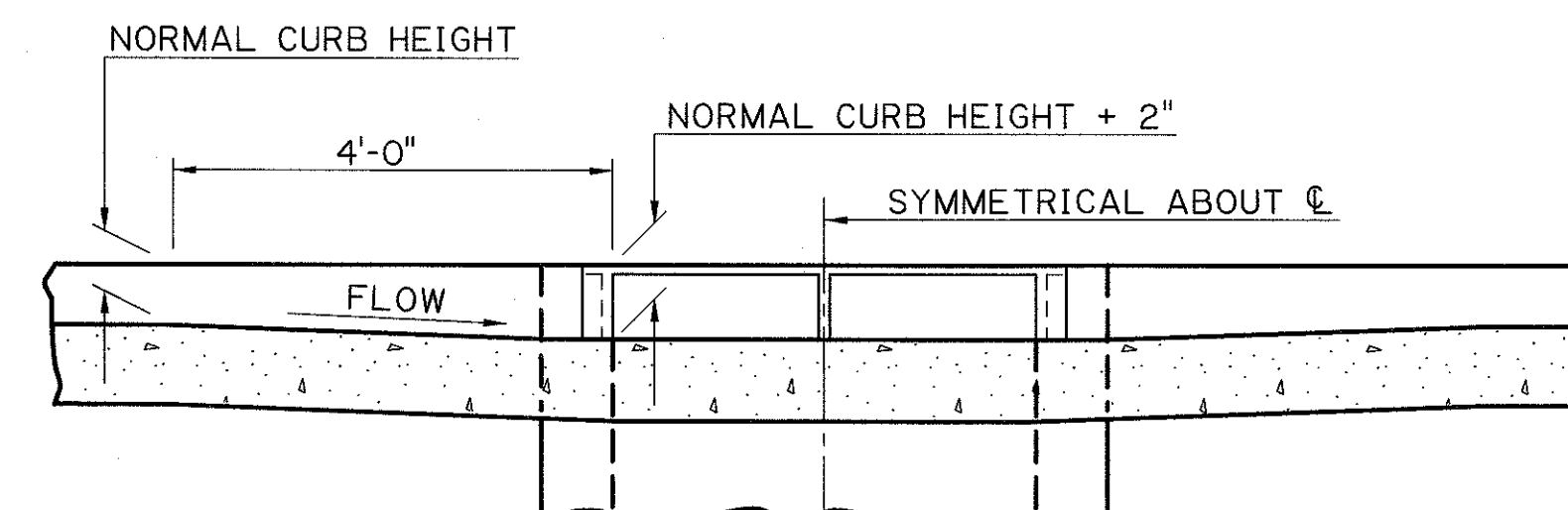


PLAN

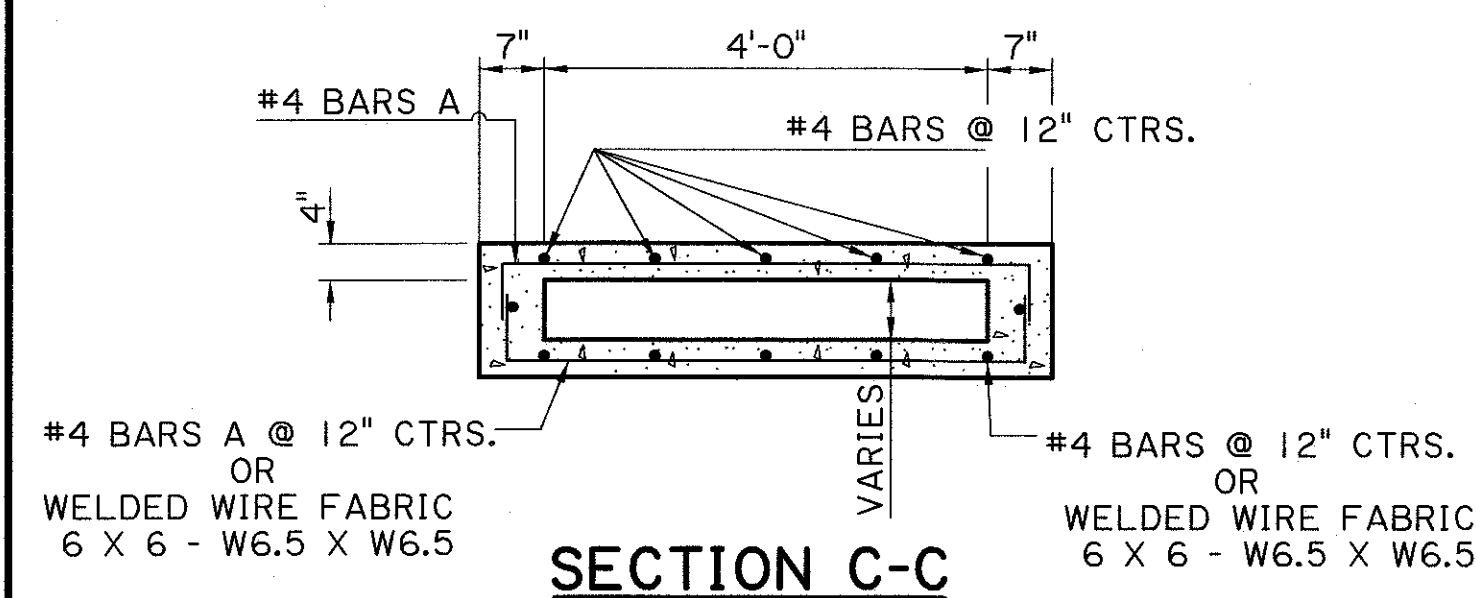
Δ DIMENSIONS SHOWN ARE FOR TYPICAL 7'-0" OFFSET FROM BACK OF CURB TO BACK OF SIDEWALK. DIMENSIONS TO BE ADJUSTED BASED ON SIDEWALK WIDTH AND OFFSET FROM BACK OF CURB.



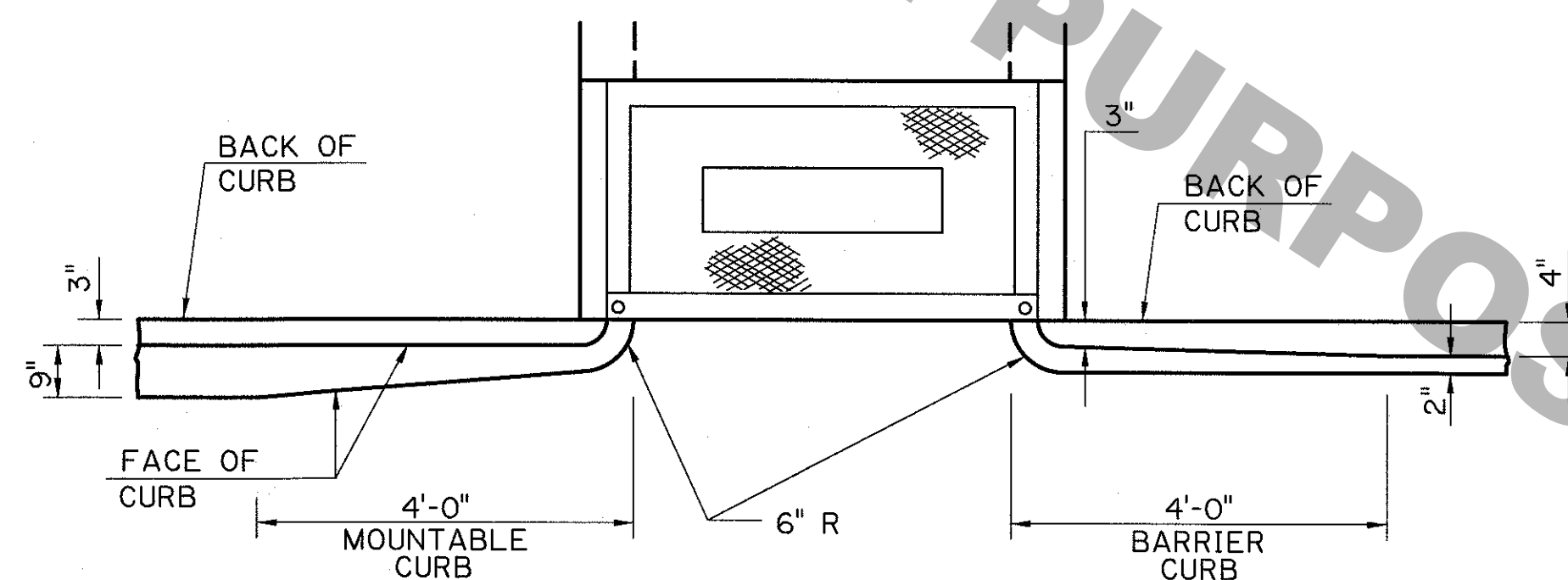
#4 BARS A
2" Ø PIN



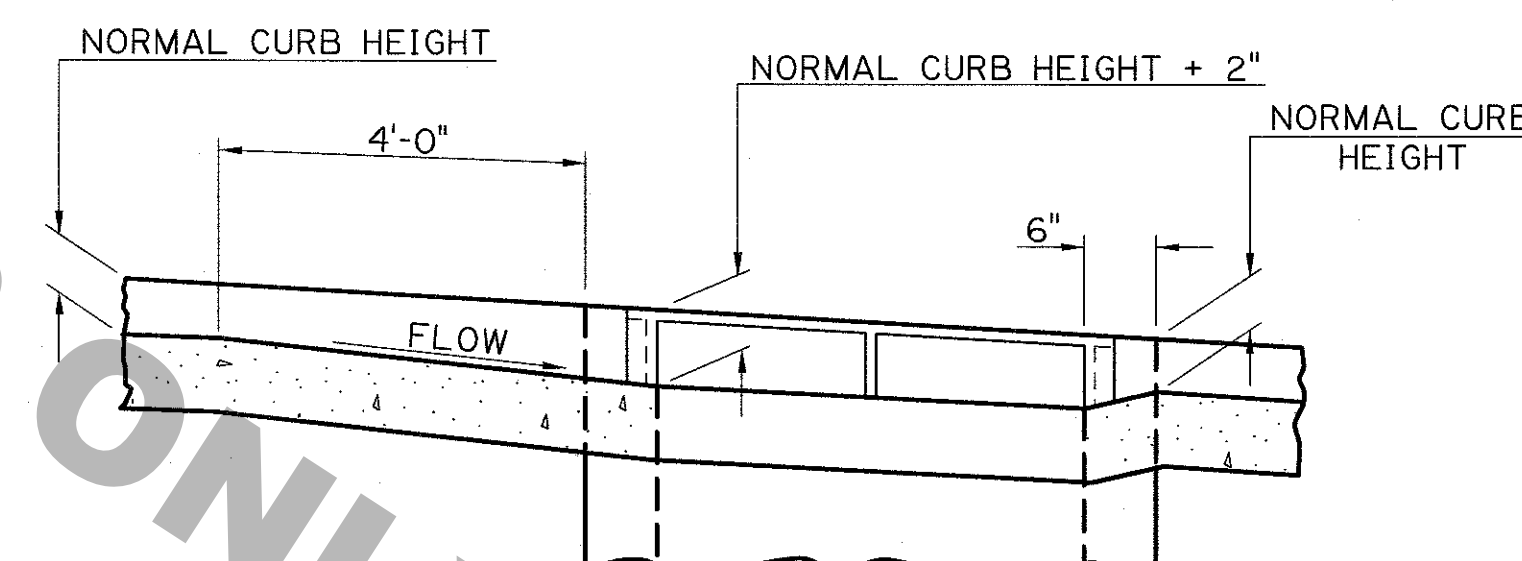
TRANSITION IN CURB HEIGHT GUTTER DRAIN AT LOW POINT



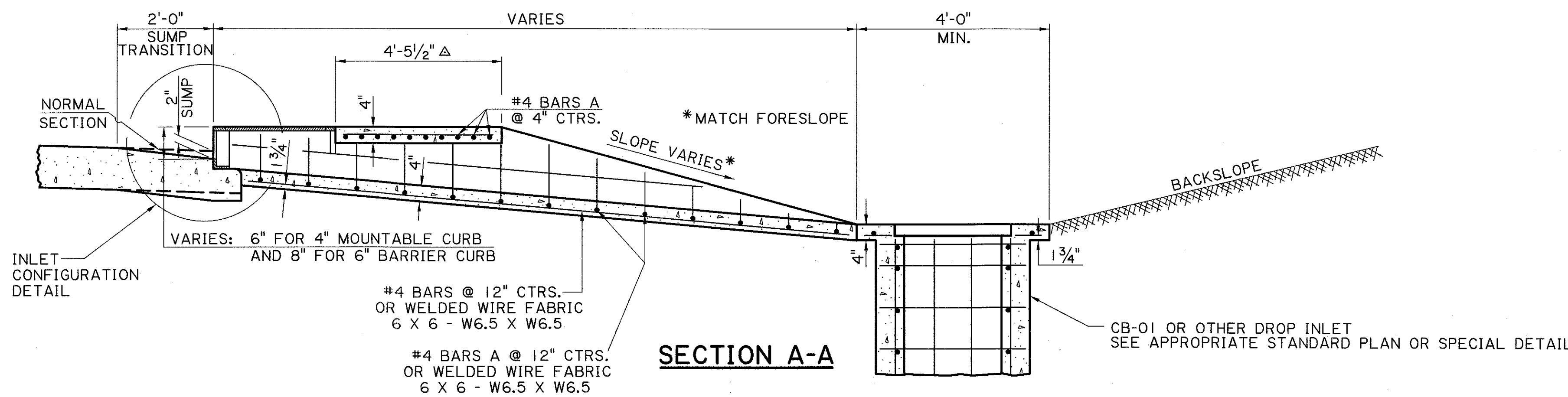
SECTION C-C



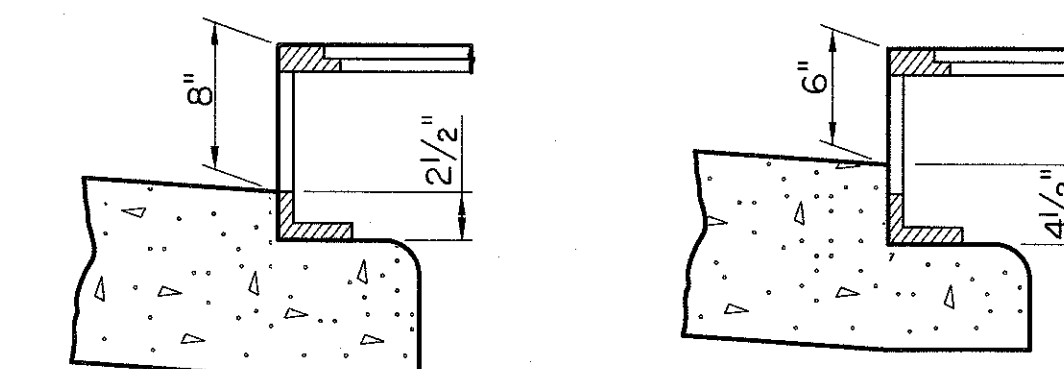
TRANSITION IN CURB WIDTH (TYPICAL)



TRANSITION IN CURB HEIGHT GUTTER DRAIN ON A GRADE



SECTION A-A



INLET CONFIGURATION

WHEN USED WITH
6" BARRIER CURB

WHEN USED WITH
4" MOUNTABLE CURB

SHEET NUMBER		DATE	
DESIGN	CHECK	DETAIL	CHECK
REVIEW	REVIEW	REVIEW	REVIEW
PARISH		STATE PROJECT	
CONTROL SECTION		SERIES #	

STATE OF LOUISIANA
MITRA HASHEMIEH
REG. NO. 28546
REGISTERED PROFESSIONAL ENGINEER
IN CIVIL ENGINEERING
9/11/2020

STATE OF LOUISIANA
ADAM LANCASTER
REG. NO. 35873
REGISTERED PROFESSIONAL ENGINEER
IN CIVIL ENGINEERING
9/10/20

STRUCTURAL

APPROVED BY CHIEF ENGINEER
DATE: 9/10/2020

STATE OF LOUISIANA
REGISTERED PROFESSIONAL ENGINEER
IN CIVIL ENGINEERING

SINGLE PAVED GUTTER DRAIN
WITH SIDEWALK

STANDARD PLAN
PG-DRAIN WITH SIDEWALK (SINGLE)

DOTD
LOUISIANA DEPARTMENT OF
TRANSPORTATION & DEVELOPMENT

HYDRAULICS
SECTION