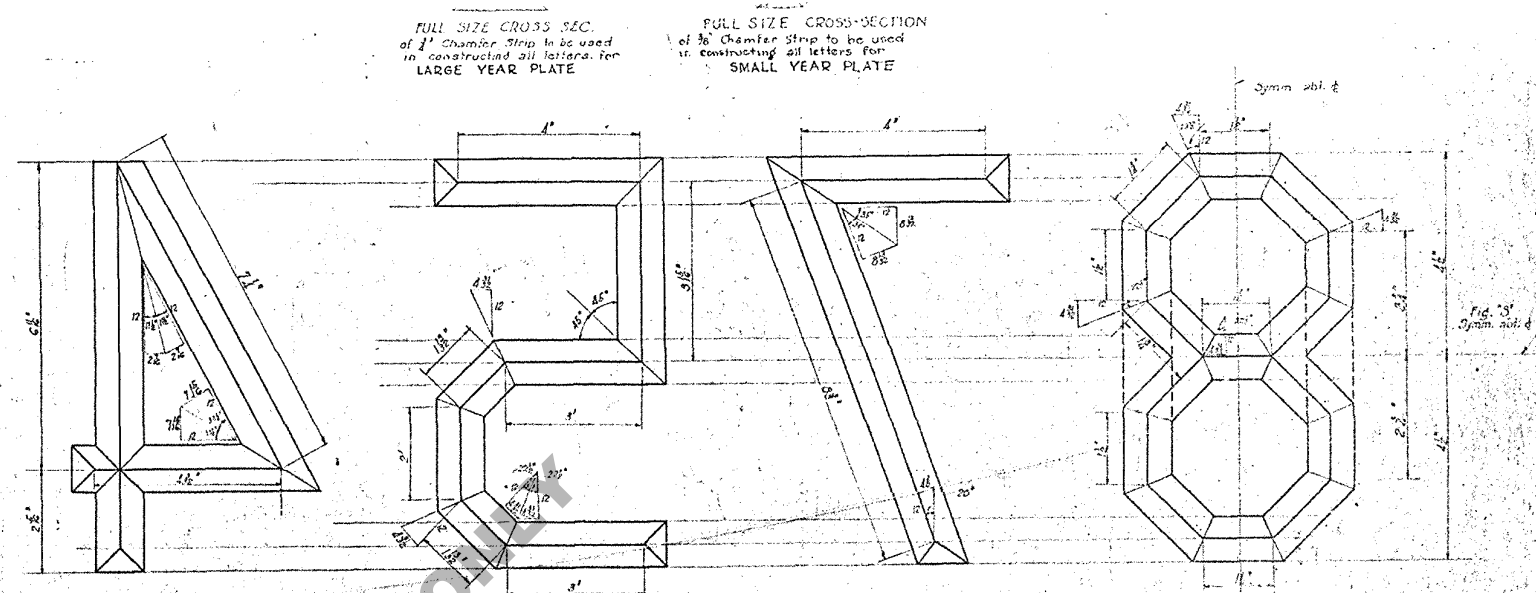
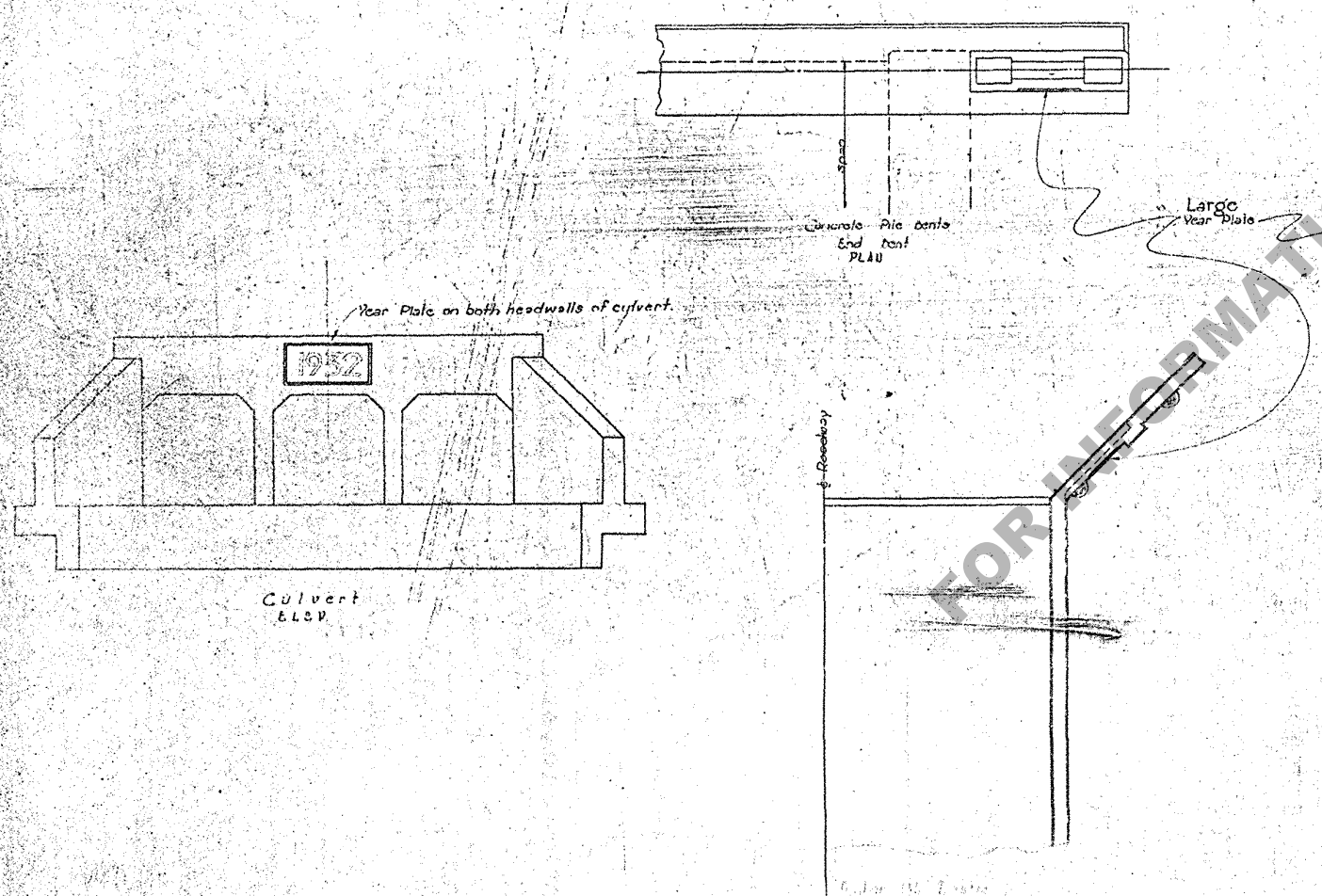


YEAR PLATE
 Dimensions shown are for Large Plate, use one-half (1/2) above dimensions for small Plates.
 Year Plate to correspond to year in which Structure is Completed.

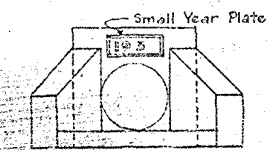


NOTE: Figure 'a' to be 'b' inverted. Figure 'd' to be made as dotted lines indicate on detail of figure 'b'.

Figure Details are Half Scale for Large Year Plate.
 Full Scale for Small Year Plate.
 Dimensions shown are for Large Year Plate.
 Use 1/2 Dimensions shown for Small Year Plate.



SKETCHES SHOWING LOCATION OF YEAR PLATE ON VARIOUS CONCRETE STRUCTURES.



Small Year Plate
 PIPE CULVERT HEADWALL
 Year Plate Required on both Headwalls of Culvert.

NOTE: No direct payment will be made for Year Plates; the cost of same shall be included in unit bid prices for Standard Pay Items.

Small Plate added Sept. 1954, L.R.P.