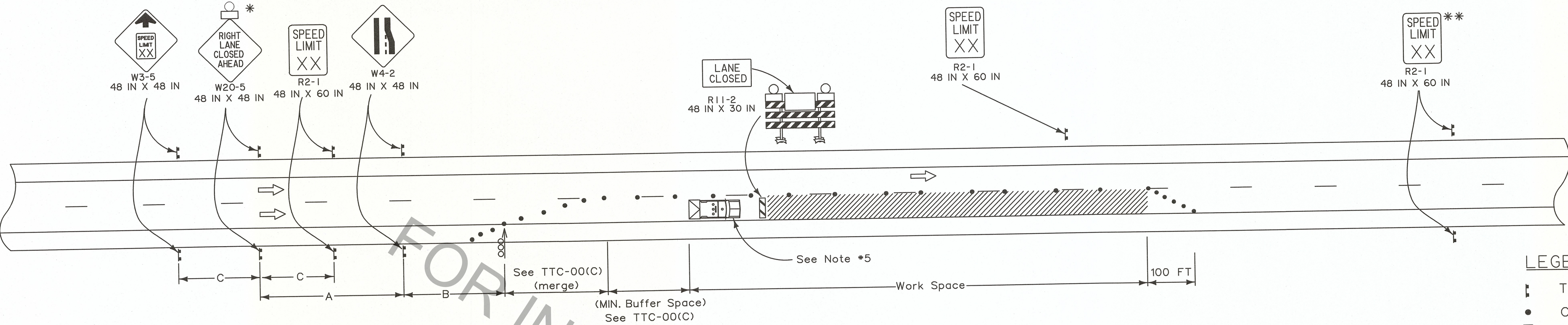


RIGHT LANE CLOSURE

SEE TTC-00(A), TTC-00(B), TTC-00(C), AND TTC-00(D)



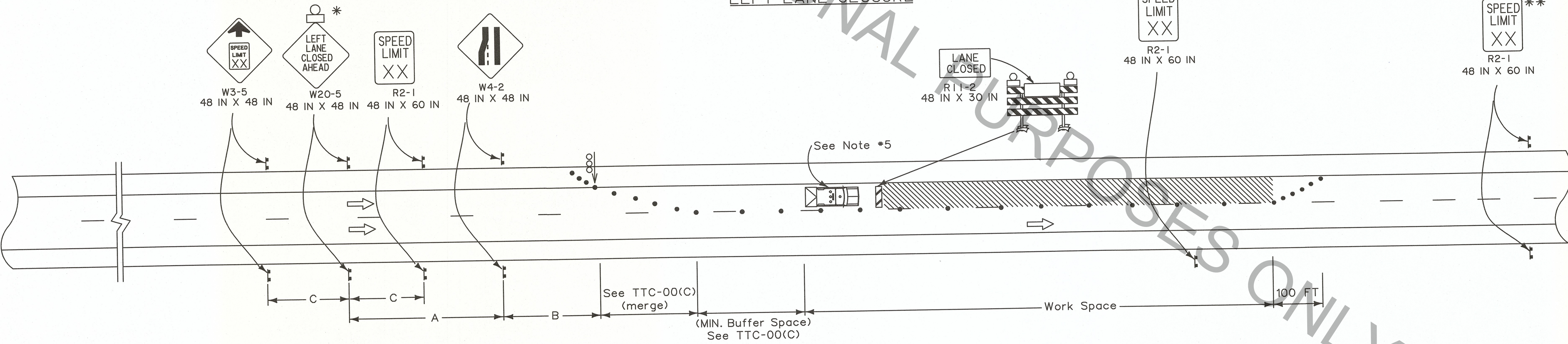
SPEED LIMIT (prior to construction)	SPACING		
	'A'	'B'	'C'
45 mph	1000 FT	500 FT	500 FT
50 mph	1000 FT	500 FT	500 FT
≥ 55 mph	1640 FT	1000 FT	800 FT

- LEGEND
- Traffic Sign
 - Channelizing Devices
 - Type III Barricades
 - Flashing Arrow Board (Type 'C')
 - Work Area
 - Type B Light
 - Direction of Travel
 - Truck with Amber Light and TMA

* Any sign of the W20-5 series may be used.

** Speed limit is to be returned to legally established speed limit.

LEFT LANE CLOSURE



NOTES

This sheet shall be used with the Temporary Traffic Control General Notes Sheets TTC-00(A), TTC-00(B), TTC-00(C), and TTC-00(D).

- This layout represents the minimum traffic controls required for lane closures on divided highways with speed limits greater than 40 mph. This layout does not cover roadwork where a ramp entrance or an exit taper falls within the work area. For advance signing see TTC-00(D).
- This layout does not illustrate roadwork near a signal or a major intersection.
- Sign spacing may be adjusted due to access conditions of the corridor.
- If speed limit is less than 45 mph, see TTC-10.

- A vehicle with a flashing amber light and a truck mounted attenuator shall be used on all interstate projects or on all roadways with an ADT greater than 20,000 and a pre-construction speed greater than or equal to 40 mph. This vehicle shall move with work operations not to exceed the roll-ahead distance required by the manufacturer plus 100 feet.
- A flagger shall be used to alert motorists when equipment or workers encroach within 2 feet of an open lane. The flagger shall be posted inside the work zone, adjacent to the open travel lane, and immediately upstream of each operation to facilitate ingress/egress of construction equipment and vehicles. Encroachment shall be held to a minimum.
- A "Road Work Ahead" sign shall be placed within 1000 feet ahead of the entrance ramp nose for any ramp within the area of traffic control signing.

ALL TTC STANDARDS SHOW MINIMUM CONSTRUCTION SIGNING.
ALL SITUATIONS SHALL BE REVIEWED AND/OR DESIGNED BY THE ENGINEER.
CONTRACTORS ARE RESPONSIBLE FOR COMPLYING WITH ALL TTC STANDARDS.



SHEET NUMBER	DESIGNED G. LEBLANC	PARISH	CONTROL SECTION	STATE PROJECT
CHECKED J. COLVIN	DATE	BY	REVISION OR CHANGE ORDER DESCRIPTION	DATE
DETAILED C. FAKOURI	NO.	APPROVED BY		
CHECKED G. LEBLANC	7/2/18	CHIEF ENGINEER		
SERIES NUMBER				

TEMPORARY TRAFFIC CONTROL FOR LANE CLOSURES ON DIVIDED HIGHWAYS (Does not include ramp entrance or exit tapers)

TTC-09

DOTD TRAFFIC ENGINEERING