

ENGINEERING DIRECTIVES AND STANDARDS

| Volume | Chapter | Section | Directive Number | Effective Date |
|--------|---------|---------|------------------|----------------|
| VI | 4 | 1 | 3 | 8/20/1986 |

SUBJECT: INSTALLATION OF BLUE RAISED PAVEMENT MARKERS FOR FIRE HYDRANT LOCATIONS

1. **PURPOSE:** The purpose of this directive is to establish procedures for the installation of blue retroreflective raised pavement markers by emergency fire personnel for the purpose of identifying fire hydrant locations.
2. **SCOPE:** The provisions of this directive are applicable to all State maintained surfaced highways.
3. **POLICY:** It will be the policy of the Department to permit the installation of blue retroreflective raised pavement markers on State maintained surfaced highways in accordance with the following provisions:
 - A. Purpose for installation: The intent of the blue markers shall be to assist fire personnel in locating firefighting water supplies.
 - B. Installation and Maintenance: The Department shall not participate in the installation or maintenance of the blue markers, nor be responsible for those damaged by maintenance or reconstruction activities. Installation will be by local fire departments under permit from the Department.
 - C. Application of Standards:
 - 1) Two-Way Streets or Roads - markers shall be placed six inches from edge of painted centerline on the side nearest the fire hydrant. If the street has no marked centerline, the marker should be placed six inches from the approximate center of the roadway on the side nearest the hydrant. See Figures 1 thru 3.
 - 2) Streets with Left Turn Lane at Intersection - markers shall be placed six inches from edge of painted white channeling line on the side nearest the hydrant. See Figure 4.
 - 3) Streets with Continuous Two-Way Turn Lane - markers shall be placed six inches from the edge of the painted yellow barrier line on the side nearest the fire hydrant. See Figure 5.
 - 4) Freeways and Expressways - because of higher maintenance at these locations if placed on the roadway, markers should be placed on the shoulder one foot outside of the painted edgeline opposite the off-right-of-way fire hydrant location. See Figure 6.Figures 1 through 6 are examples of typical installations.
 - D. Responsibility: Each District Administrator will be responsible for issuing letter permits for the marker installations when requested by local fire department officials. They shall also be responsible for ensuring that the installation of these markers is in accordance with acceptable practices and the location criteria contained herein.
4. **OTHER ISSUANCES AFFECTED.** All directives, memoranda or instructions issued heretofore in conflict with this directive are hereby rescinded.
5. **IMPLEMENTATION.** The effective date of this directive is September 1, 1986.

ROY MITCHELL
CHIEF ENGINEER

TYPICAL HYDRANT MARKER LOCATION

EDSM NO. VI.4.1.3
PAGE 3 of 3

Figure 1
TWO LANE STREET

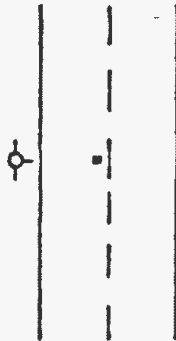


Figure 2
MULTI-LANE STREET

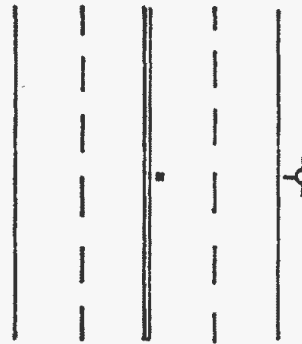


Figure 3
TWO LANE STREET
AT INTERSECTION

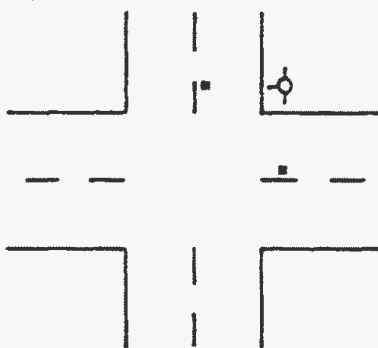


Figure 4
FOUR LANE STREET WITH TURN LANE
AT INTERSECTION

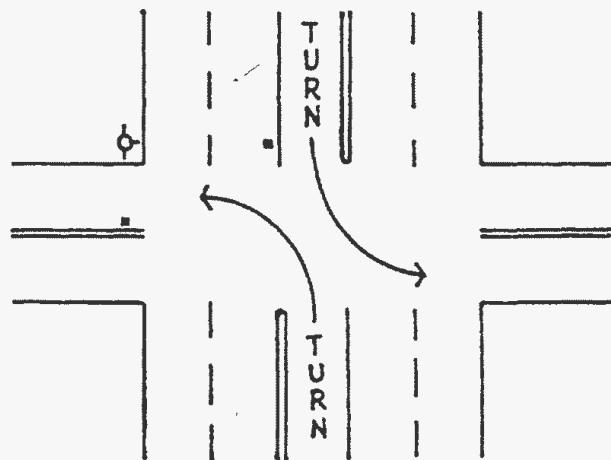


Figure 5
MULTI-LANE STREET WITH
TURN LANE

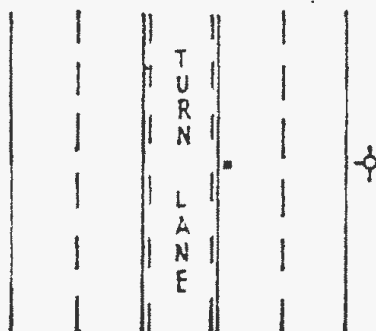


Figure 6
FREEWAYS AND EXPRESSWAYS

