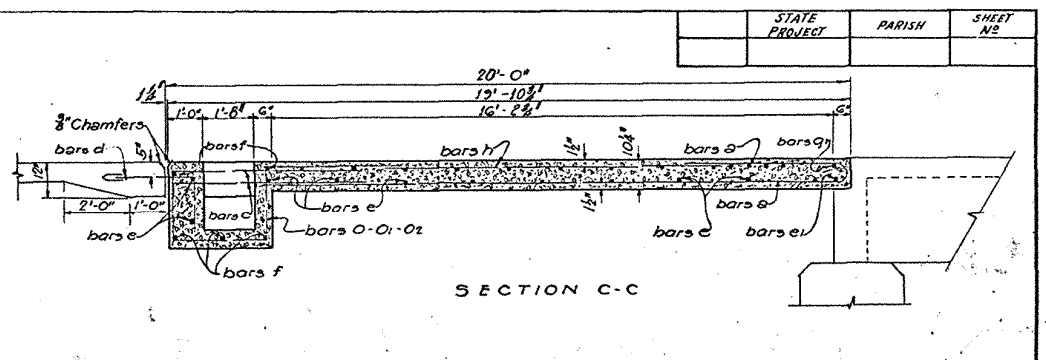


BILL OF REINFORCING STEEL

MARK	SIZE	SPACING	20' ROADWAY		24' ROADWAY		LOCATION		
			NB	UNIT LENGTH	TOTAL LENGTH	NB		UNIT LENGTH	TOTAL LENGTH
a	3/8"	6"	40	21'-1"	843'-4"	48	21'-1"	1012'-0"	Longit. in Bottom of Slab
b	"	"	2	18'-9"	37'-6"	2	18'-9"	37'-6"	Under Curbs
c	"	"	9	4'-6"	40'-6"	12	4'-6"	54'-0"	Thru Struts
d	"	12"	21	4'-0"	84'-0"	25	4'-0"	100'-0"	Dowels to Rdwy. Slab
TOTAL 3/8" BARS			1510	Lbs.	10051'-4"	1808	Lbs.	12031'-6"	
e	1/2"	24"	11	20'-6"	225'-6"	11	24'-6"	269'-6"	Transv. in Bottom of Slab of Catch Basin
e1	"	Plan	1	19'-6"	19'-6"	1	23'-6"	23'-6"	at Bridge End
f	"	Section Z-Z	5	24'-3"	121'-3"	5	28'-5"	141'-3"	Transv. in Walls of Bottom of Catch Basin
g	"	Plan	13	20'-6"	266'-6"	13	24'-6"	318'-6"	Top of Slab
g1	"	Plan	1	19'-6"	19'-6"	1	23'-6"	23'-6"	at Bridge End
h	"	18"	14	12'-0"	168'-0"	16	12'-0"	192'-0"	Longit. in Top of Slab
k	"	2	18'-9"	37'-6"	2	18'-9"	37'-6"	Curbs	
o	12"	4	11'-10"	47'-4"	4	11'-10"	47'-4"	Hoops in Catch Basin	
o1	12"	5	12'-2"	60'-10"	5	12'-2"	60'-10"		
o2	12"	12	12'-5"	149'-0"	16	12'-5"	149'-0"		
p	11"	5	10'-8"	53'-4"	5	10'-8"	53'-4"		
s	"	Section XX	4	2'-10"	11'-4"	4	2'-10"	11'-4"	Transv. in Top Slab & End Wall of Catch Basin
TOTAL 1/2" BARS			1003	Lbs.	11794'-7"	1128	Lbs.	13274'-7"	



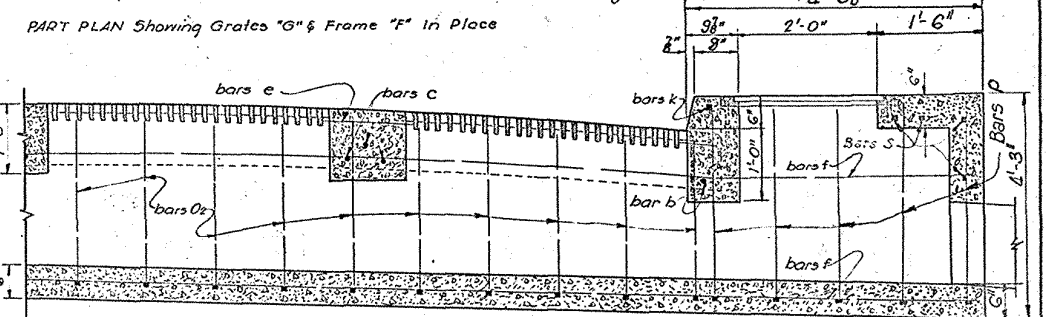
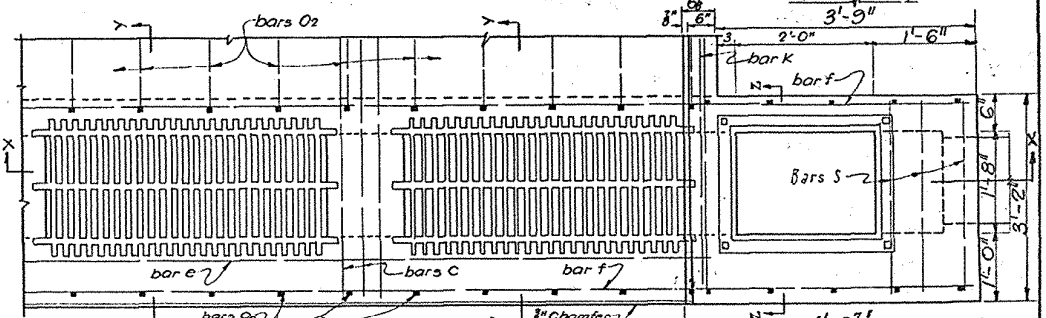
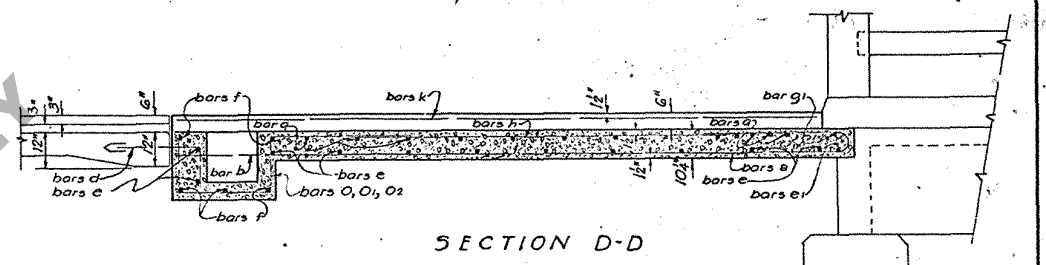
BILL OF CASTINGS

ITEM	UNIT	20' ROADWAY	24' ROADWAY
C.I. GRATES "G"	430	4 1720	5 2150
C.I. COVER "C"	130	1 130	1 130
C.I. FRAME "F"	110	1 110	1 110
TOTAL WEIGHT		1960	2390

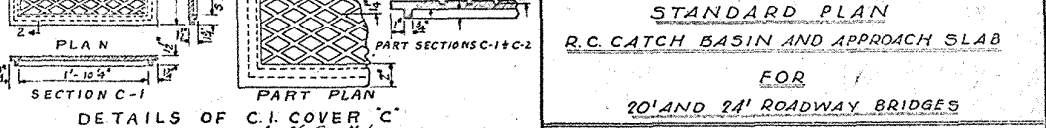
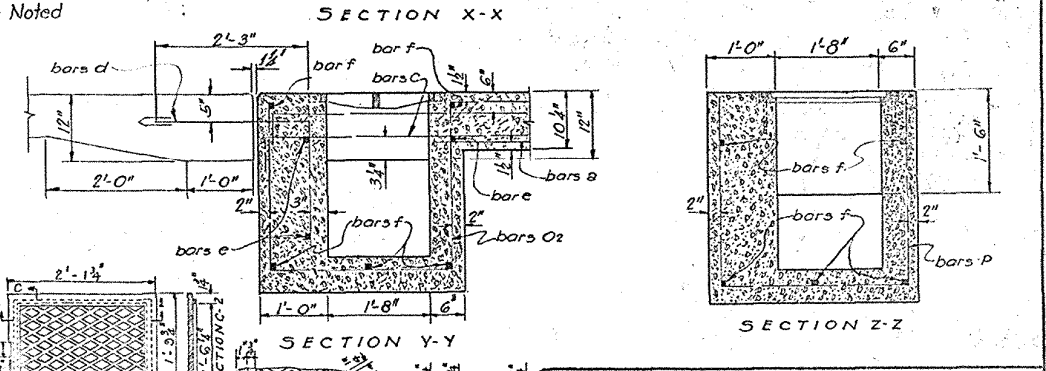
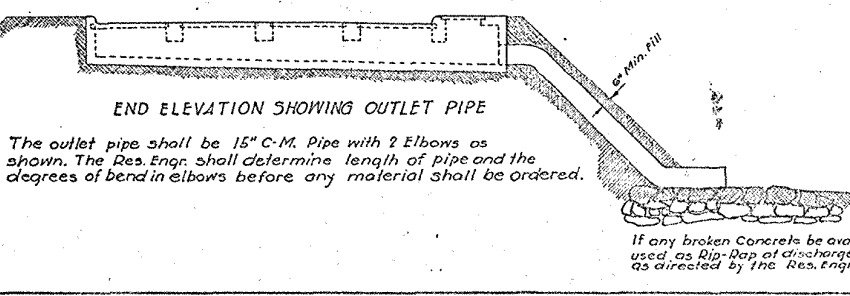
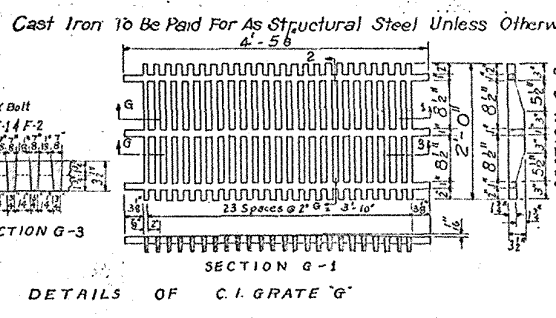
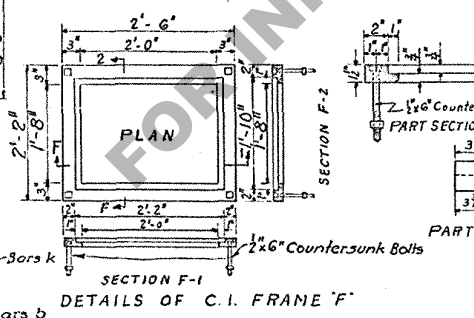
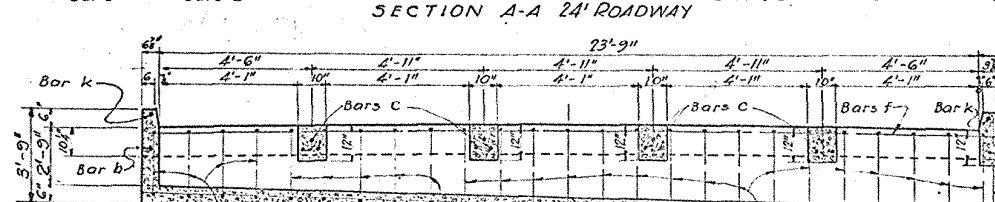
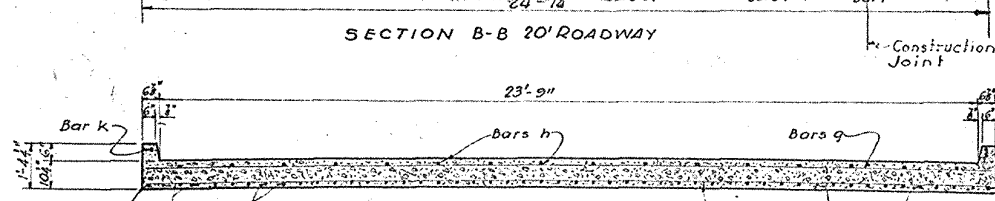
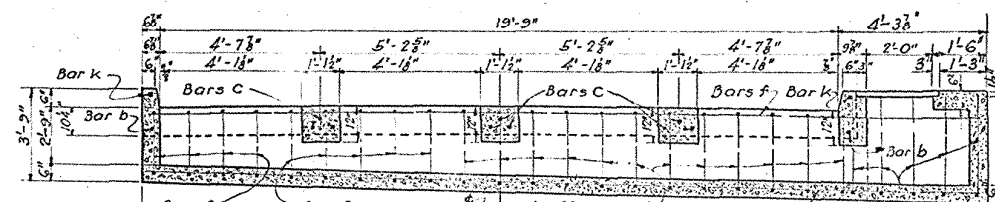
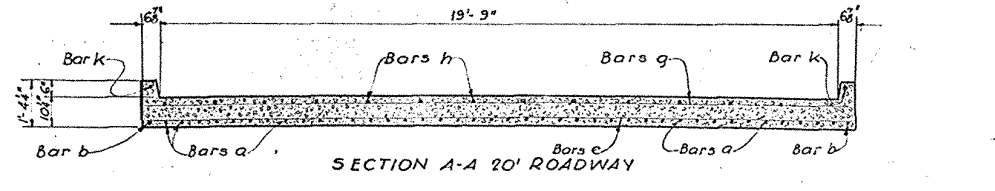
QUANTITIES FOR ONE SLAB COMPLETE

ITEM	UNIT	20' ROADWAY	24' ROADWAY
CLASS "A" CONCRETE	Cu. Yds.	17.60	20.76
REINFORCING STEEL	Lbs.	2513	2936
CAST IRON	Lbs.	1960	2390
15" C.M. PIPE	Lin. Ft.	30	36

GENERAL NOTES:
 Cast Iron Specifications - ASTM A-48-36 or subsequent amendments; Class 30.
 Reinforcing Steel Specifications - ASTM A-618-36 or subsequent amendments; Class 60.
 Concrete shall be Class "A-A".
 All Reinforcing Steel shall be deformed bars, except the 3/8" dowel bars, which shall be round and smooth.
 The Sub-Grade shall be prepared as described in Pamphlet G, Paragraph 36-31.
 The Slab shall be finished as described in Pamphlet G, Paragraph 36-33, except that no finishing machine shall be required.
 The Slab shall be protected and cured as described in Pamphlet G- Paragraphs 36-34, 36-35 -36-36.
 The 2'-0" sections of Dowel bars d which enters the paving slab shall be dipped in heavy oil or painted with grease prior to placing.
 Curbs shall be poured monolithic with slab.
 All castings shall be true to dimensions.



PLAN WITHOUT CASTINGS (20' ROADWAY)
 Left Half Showing Reinforcing in Bottom of Slab Right Half Showing Reinforcing in Top of Slab



STANDARD PLAN
R.C. CATCH BASIN AND APPROACH SLAB
 FOR
20' AND 24' ROADWAY BRIDGES

LOUISIANA HIGHWAY COMMISSION
 BATON ROUGE, LA. MAY 1934

Designed I.R. Pray	Detailed I.R. Pray	Traced Pray & Wagner
Checked W.C. Pray	Checked W.C. Pray	Checked W.C. Pray
In Charge of W.C. Pray	Checked W.C. Pray	Checked W.C. Pray

REVISIONS

No.	Description	By
1	Increase Size of C Basin	W.C.P.
2	Change of Curb Section	W.C.P.
3	Exp. Joint	P.L.
4	C.I. Specifications	W.C.P.

If any broken concrete is available, it shall be used as Rip-Rap at discharge end of pipe as directed by the Res. Engr.