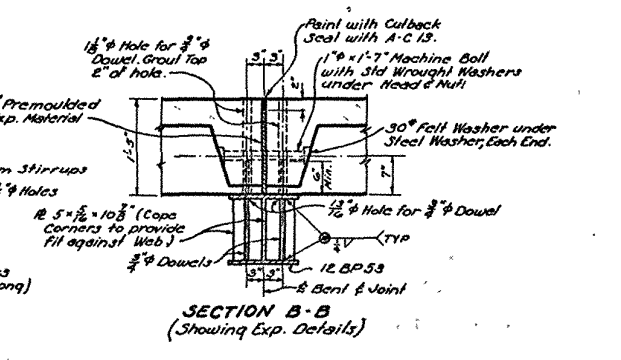
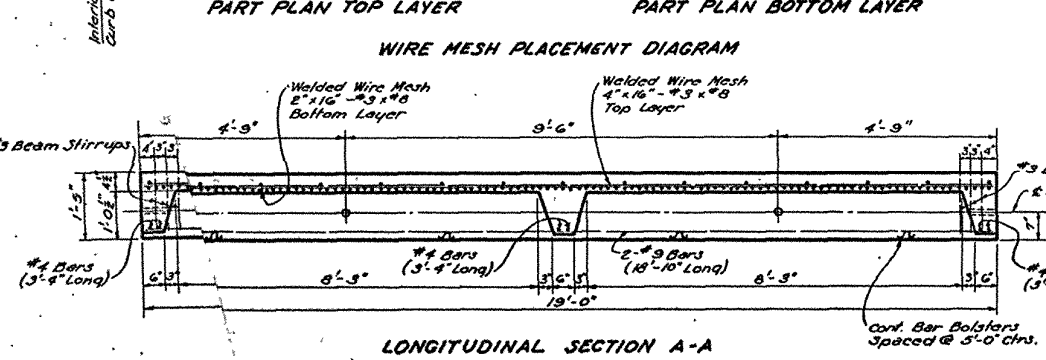


ESTIMATED QUANTITIES

DESCRIPTION	BRIDGE OF 2 SPANS OR 2 END SPANS	ONE ADDITIONAL INTERMEDIATE SPAN
PRECAST SLAB CURB UNIT	4 EACH	2 EACH
PRECAST SLAB INTERIOR UNIT	10 EACH	5 EACH
HANDRAIL	90.06 LIN. FT.	38.02 LIN. FT.
CLASS "A" CONCRETE (FLARED)	1.67 CU. YDS.	0
FABRICATED CARBON STEEL	5000 POUNDS	1570 POUNDS



GENERAL NOTES:

CONSTRUCTION SPECIFICATIONS: Latest Approved La. Highway Dept. Std. Specs.

Design Loading: A.A.S.H.O. H 13 Equivalent.

All dimensions to Reinforcing Steel are to bar centers.

All Reinforcing Steel shall be accurately located in the forms and firmly held in place by means of Steel Wire Supports.

Wire Mesh shall conform to the Specification for Welded Steel Wire Fabric for Concrete Reinforcement in the A.A.S.H.O. Spec. for Highway Materials, Designation M 53-37 (A.S.T.M. A 185-37).

PRINTING: All Steel to be painted in accordance with latest revisions to Standard Specifications for painting Structural Steel.

Reinforcing Steel shall be Intermediate or Hard Grade, A.S.T.M. A 15 or Rail Steel A.S.T.M. A 16.

All Exposed Concrete Corners to be Chamfered 3/8" unless otherwise noted.

All Bolts shall be Hot Dipped Galvanized.

Maximum Size of Aggregate shall be One Inch.

All Machine Bolts Connecting Units to be Included in Price Bid for Units.

All Machine Bolts Connecting Rail Posts to Curb Sections and Channel Handrail to Rail Posts to be included in Price Bid for Handrail.

All Precast Concrete Posts and Blocks at Bridge and Flares to be included in Price Bid for Handrail.

Welding shall conform to specifications: Welded Highway and Railway Bridges of the American Welding Society.

A deviation of more than 1/8" in dimension or line will be cause for rejection of the unit.

FOR DETAILS OF FLUTED OR SMOOTH SHELL CAST IN PLACE CONCRETE PILES, SEE STANDARD PLAN C.M. 131.

AVERAGE PILE LOAD = 21.8 TONS/PILE.

BRACING WILL BE REQUIRED FOR BENTS USING 12 BP 53 PILES WHEN GROUND TO GRADE EXCEEDS 12'.

AGGREGATE: Concrete shall conform to Std. Specs. for Lightweight Aggregates for Concrete, A.S.T.M. Designation C 130-43 and shall contain not less than 6 Bags of cement to one cubic yd. of concrete. It shall have a min. compressive strength of 3000 #/sq. in. after 28 days, cast in place class "A" concrete.

DISCARDED
4-3-59
CEA

STANDARD PLAN
19'-0" PRECAST CONCRETE SPANS
AND BENTS
24'-0" CLEAR RDWY. 2'-6" CURBS

DATE: APRIL 20, 1955

STATE OF LOUISIANA
DEPARTMENT OF HIGHWAYS

DESIGNED: [] CHECKED: []

DATE: [] DESCRIPTION: [] BY: []

REVISIONS: []

TRACED: []

C.E.C. 7-13