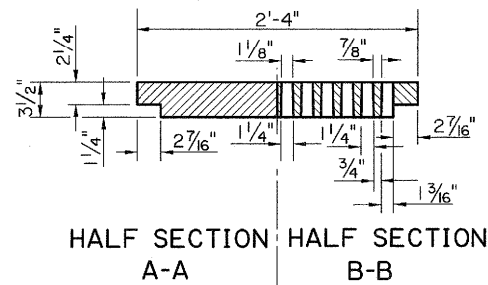


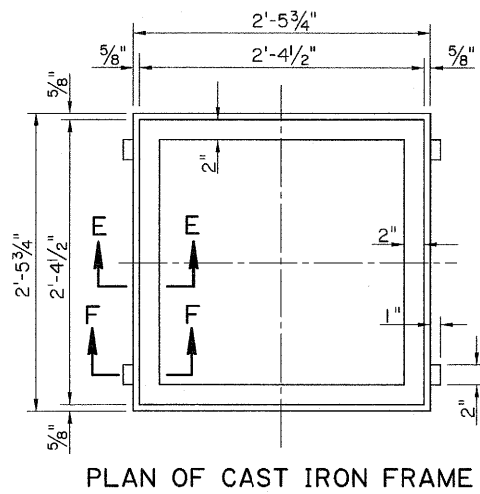
PLAN OF CAST IRON GRATE
 $\Delta 1'-11\frac{1}{8}'' = 12 \text{ OPENINGS @ } 1\frac{1}{8}''$
 11 BARS @ $\frac{7}{8}''$



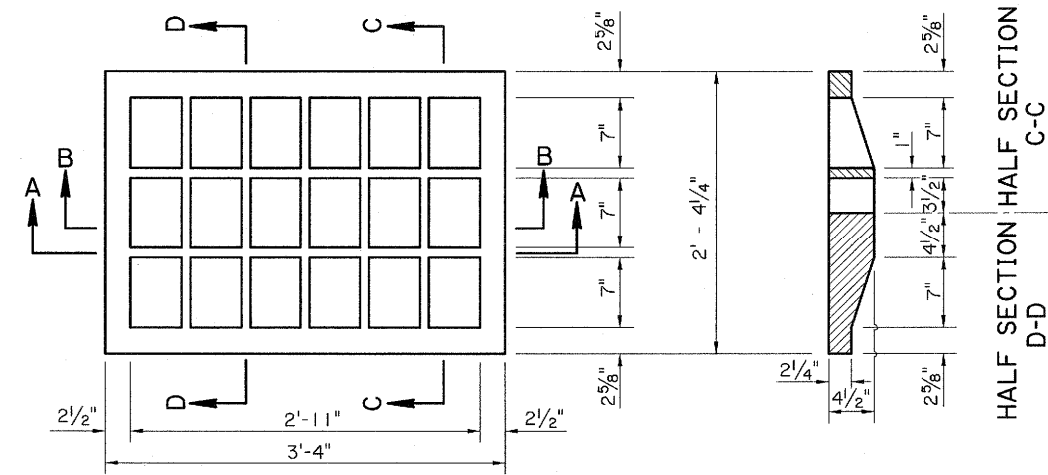
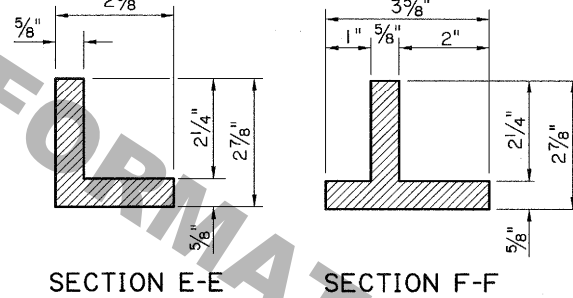
TYPE "A"

CAST IRON GRATE & FRAME

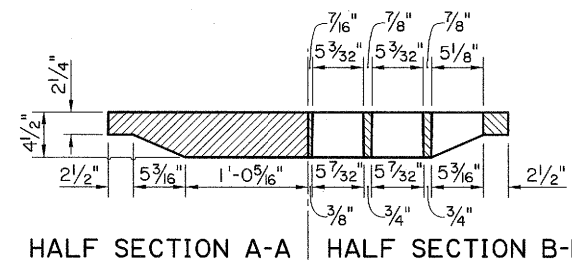
- NOTES: 1. WEIGHT OF CAST IRON GRATE = 334 LBS
 2. WEIGHT OF CAST IRON FRAME = 90 LBS



PLAN OF CAST IRON FRAME



PLAN OF CAST IRON GRATE



TYPE "B"

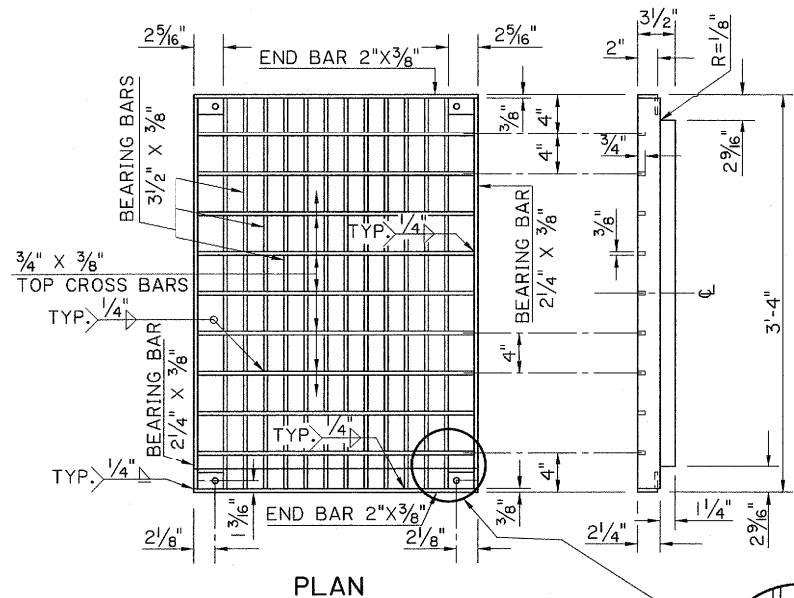
CAST IRON GRATE

- NOTES: 1. WEIGHT OF CAST IRON GRATE = 350 LBS
 2. UNLESS OTHERWISE STATED, TYPE "E" FRAME WILL BE USED WITH THIS GRATE.

TYPE "C"

STEEL DRAIN GRATE

- NOTES: 1. GRATES TO BE GALVANIZED AFTER FABRICATION.
 2. UNLESS OTHERWISE STATED, TYPE "E" FRAME IS TO BE USED WITH THESE GRATES. (SEE SHEET 2)
 3. SUPPLIER OF GRATE ALSO IS TO FURNISH PRE-FITTED GRATE FRAME.



WELDED & SEALED DRAIN GRATE

CONTINUOUS WELD FOR FULL DEPTH EACH BEARING BAR TO END BARS AND CROSS BARS.

ALL BEARING BARS TO BE SET FLUSH ON GRATE FRAME.

WEIGHT OF DRAIN GRATE = 233 LBS. $\pm 5\%$

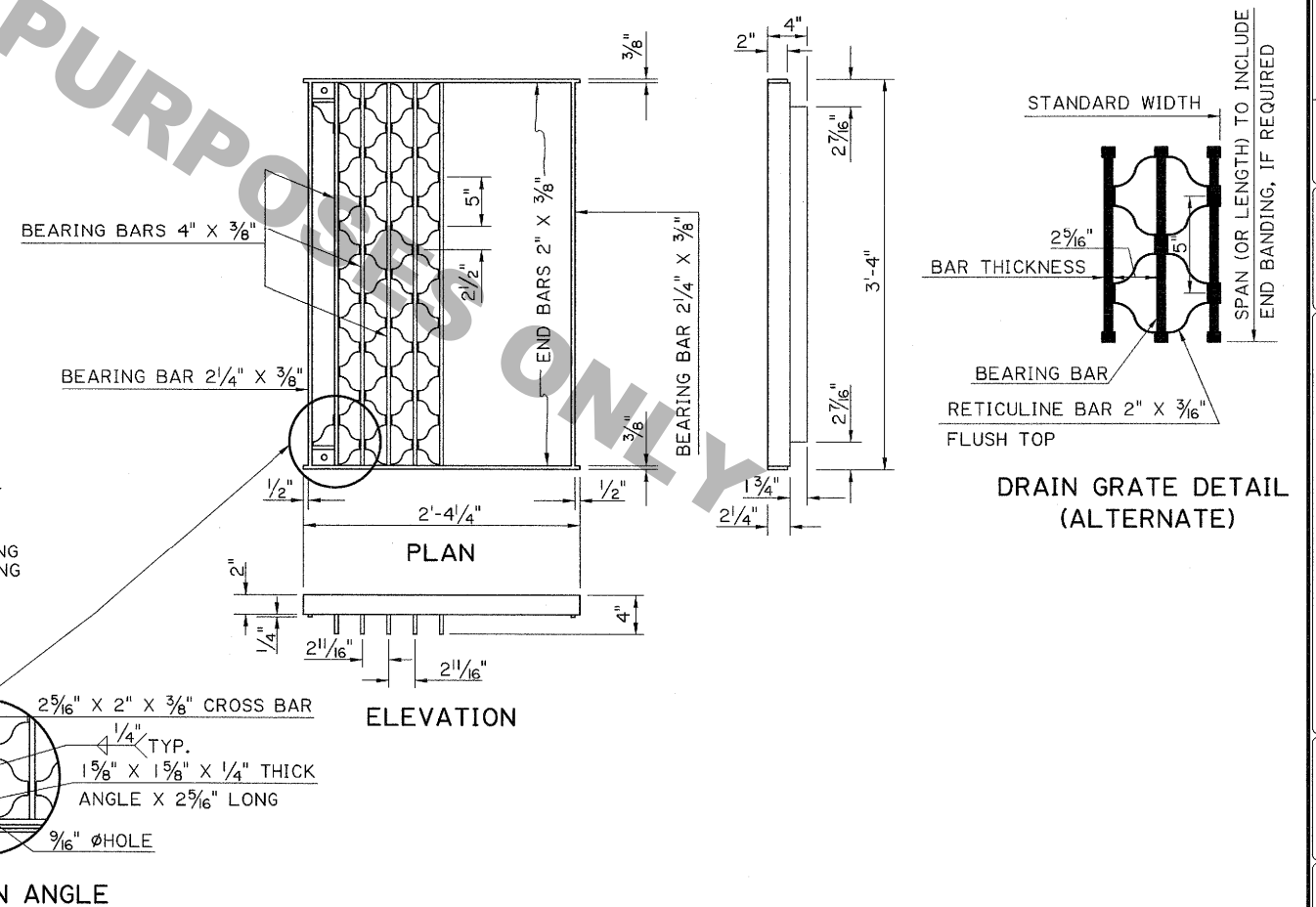
RIVETED RETICULINE DRAIN GRATE ALTERNATE

CONTINUOUS WELD FOR FULL DEPTH EACH BEARING BAR TO END BARS.

ALL BEARING BARS TO BE SET FLUSH ON GRATE FRAME.

CENTER TO CENTER OF BEARING BARS EQUAL $2\frac{3}{8}''$ PLUS BEARING BAR THICKNESS.

WEIGHT OF DRAIN GRATE = 266 LBS. $\pm 5\%$



DRAIN GRATE DETAIL (ALTERNATE)

DESIGNED	BY	DATE	8-15-77
CHECKED	BY	DATE	11-04
REVISIONS	DESCRIPTION	DATE	
1	ADD TYPE K.I. REVISED TYPES C.E.I.N. JCM	3/1	
2	DELETE TYPES G.L.L.M.O	3/1	
3			
4			
5			
6			
7			
8			
9			
10			
11			
12			
13			
14			
15			
16			
17			
18			
19			
20			
21			
22			
23			
24			
25			
26			
27			
28			
29			
30			
31			
32			
33			
34			
35			
36			
37			
38			
39			
40			
41			
42			
43			
44			
45			
46			
47			
48			
49			
50			
51			
52			
53			
54			
55			
56			
57			
58			
59			
60			
61			
62			
63			
64			
65			
66			
67			
68			
69			
70			
71			
72			
73			
74			
75			
76			
77			
78			
79			
80			
81			
82			
83			
84			
85			
86			
87			
88			
89			
90			
91			
92			
93			
94			
95			
96			
97			
98			
99			
100			