

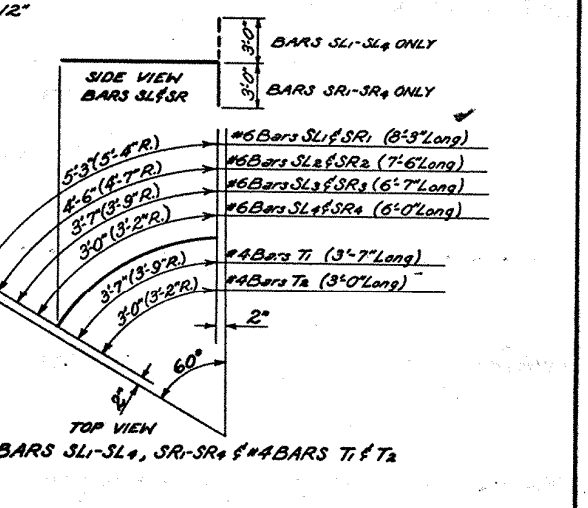
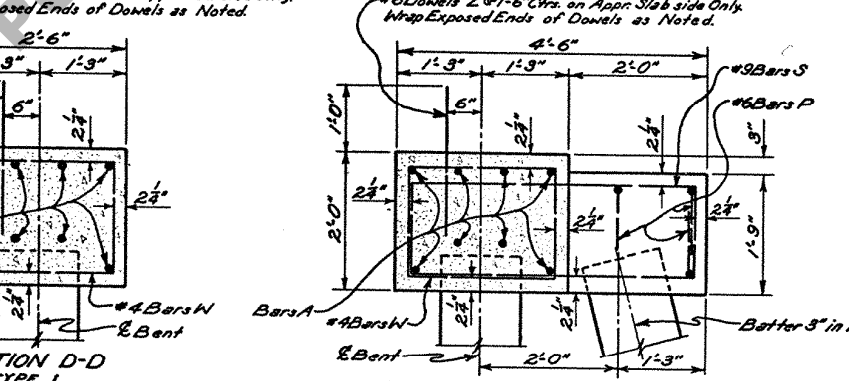
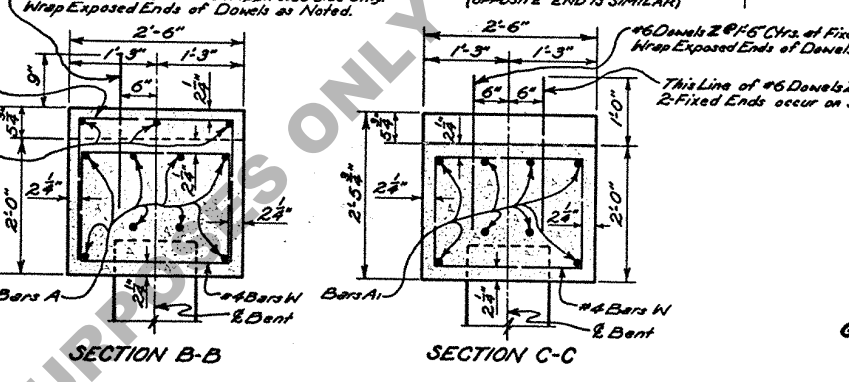
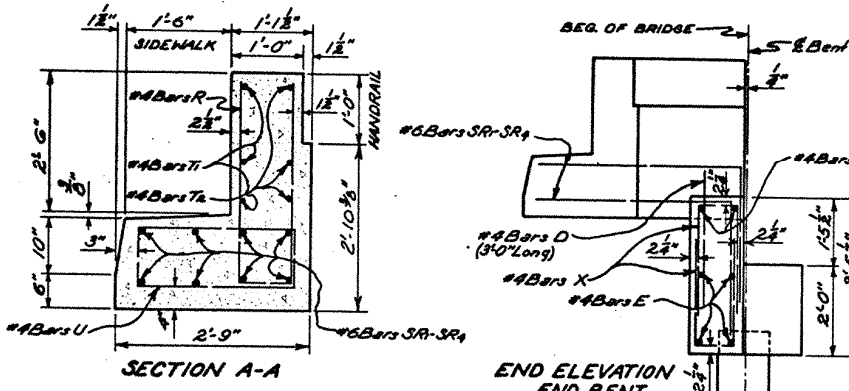
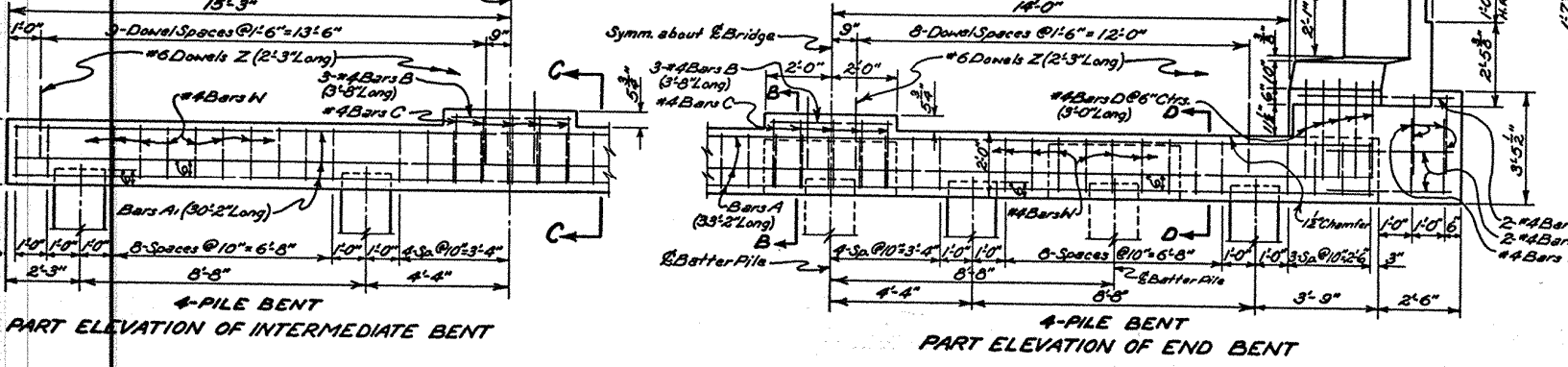
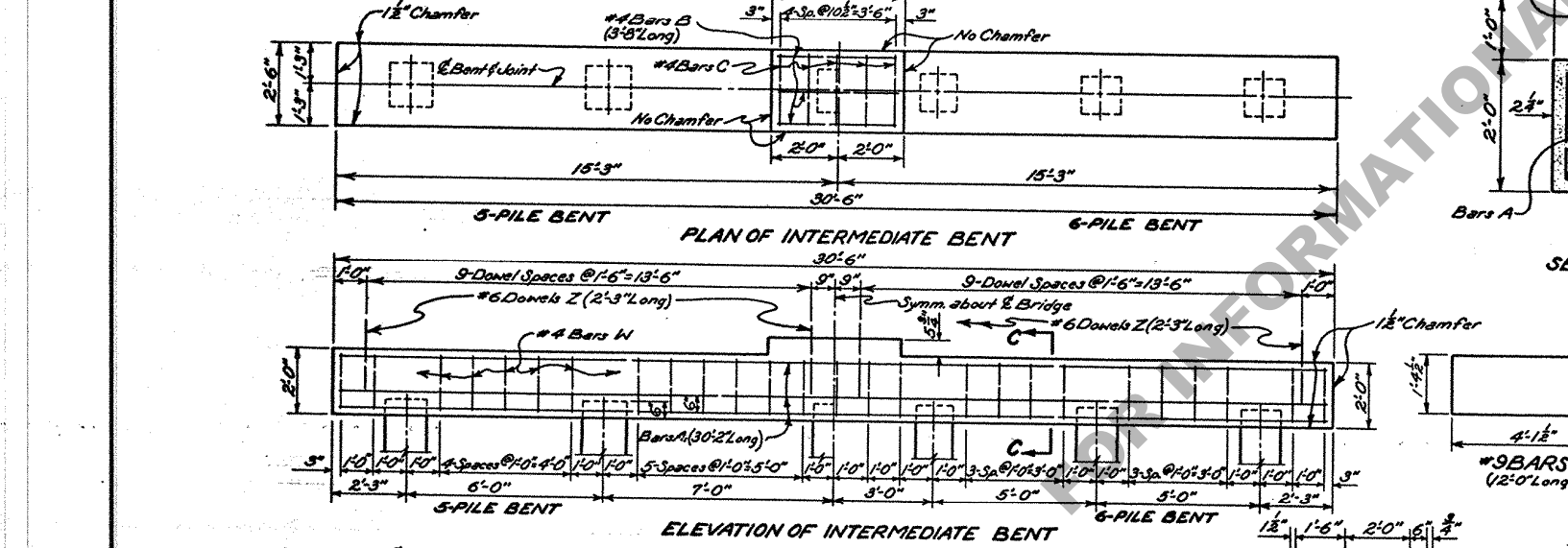
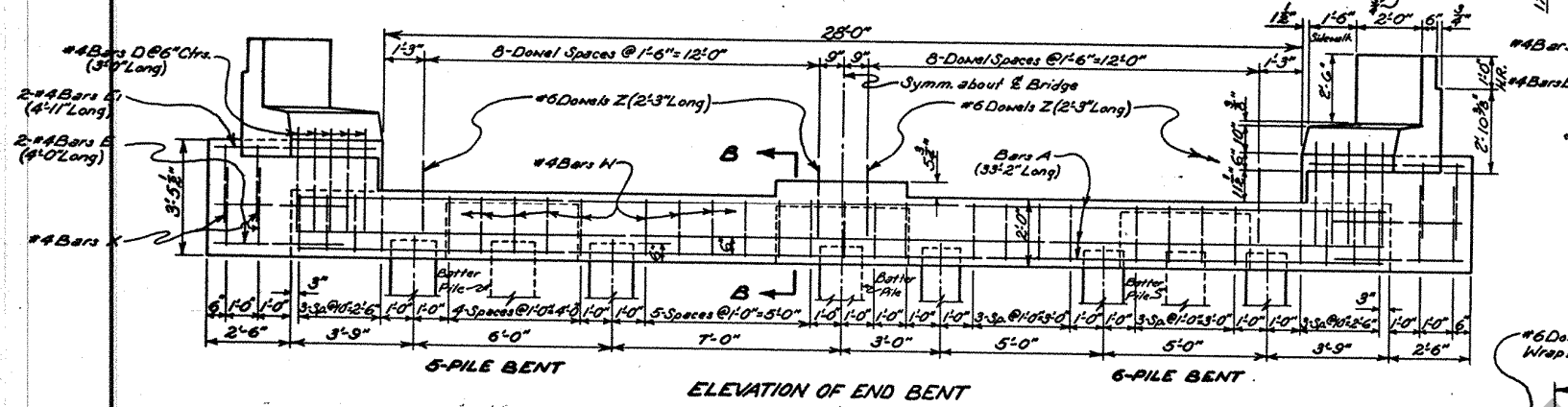
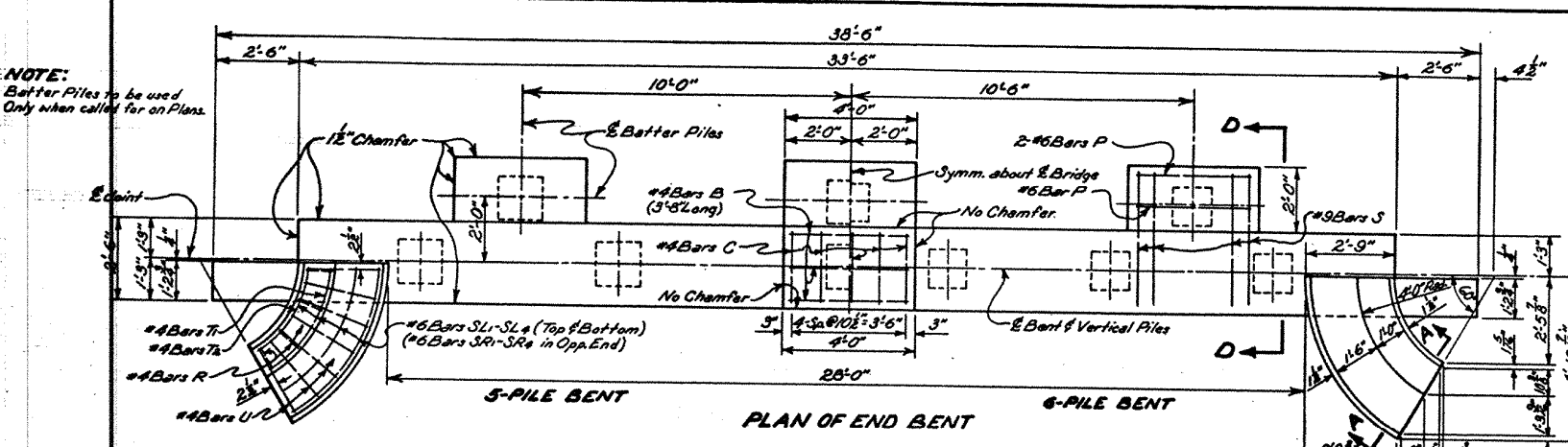
STATE PROJECT	PARISH	SHEET NO.

TYPE OF END BENT REQUIRED			
END BENT	GROUND TO GRADE (FEET)	SUBSOIL	BATTERED PILES
TYPE 1	6-8	POOR	0
TYPE 2	8-10	POOR	2
TYPE 3	10-12	POOR	3

QUANTITIES AND PILE LOADS			
ITEM TYPE	SIZE OF BARS A & A'	CLASS "A" DEFORMED CONCRETE REIN. STEEL (CU. YDS.)	AVERAGE PILE LOAD (TONS)
<b>4-PILE END BENT #</b>			
TYPE 1	#10	9.13	1806
TYPE 2	#10	10.09	2183
TYPE 3	#10	10.56	2371
<b>5-PILE END BENT #</b>			
TYPE 1	#8	9.13	1345
TYPE 2	#8	10.10	1722
TYPE 3	#8	10.59	1910
<b>6-PILE END BENT #</b>			
TYPE 1	#8	9.15	1339
TYPE 2	#8	10.15	1716
TYPE 3	#8	10.63	1904
<b>INTERMEDIATE BENT</b>			
4-PILE	#10	5.65	1303 @
5-PILE	#8	5.65	888 @
6-PILE	#8	5.67	877 @

**GENERAL NOTES:**  
 Construction Specs: Latest approved La. Dept. of High. Std. Specs.  
 Design Specs: A.A.S.H.O. Std. Specs. for Hwy. Bridges 1949 as amended to Dec. 1950.  
 Reinforcement Bars shall be Intermediate or Hard Grade, A.S.T.M. A15, or Rail Steel, A.S.T.M. A16 conforming with A.S.T.M. A305. Dimensions relating to Reinforcing Steel are to Bar Centers.  
 All Concrete to be Class "A".  
 All Exposed Ends of #6 Dowels Z to be wrapped with 2-Layers of 15" Tar Paper. Close fitting Tubes made of compressible material not less than 3/4" thick may be substituted.  
 For Details of Concrete Piles see Std. Plan as shown on General Plan.  
 Maximum Pile Loads unless otherwise instructed by Bridge Design Section:  
 14" R.C. Piles = 28 Tons Per Pile.  
 16" R.C. Piles = 32 Tons Per Pile.  
 18" R.C. Piles = 36 Tons Per Pile.  
 Concrete and Steel in Sidewalk Curb Flare and Handrail Flare are included in Bent Cap Quantities and are to be paid for as part of the Bent.  
 Chamfer all Exposed Corners 1/4" unless otherwise noted.  
 Tar Paper Wrappings to be included in price bid for Class "A" Concrete.  
 Live Load: H20-S16-44.

**NOTE:**  
 Battered Piles to be used Only when called for on Plans.



DESIGN TAKEN FROM  
 STD. PLAN CS-72-20  
 DATED OCT. 23, 1951

STANDARD PLAN  
**PRECAST CONCRETE PILE BENTS**  
 FOR 25'-0" CONCRETE SLAB SPANS  
 LIVE LOAD: H20-S16-44  
 28'-0" ROADWAY 1'-6" SIDEWALKS  
 DATED July 12, 1959

DESIGNED		CHECKED		TRACED	
FLARE QUANTITIES, PILE LOADS		K. Hampton		B. Eastman	
DATE	DESCRIPTION	BY	CHECKED	CHECKED	CHECKED
	REVISIONS				

STATE OF LOUISIANA  
 DEPARTMENT OF HIGHWAYS  
 BRIDGE DESIGN SECTION