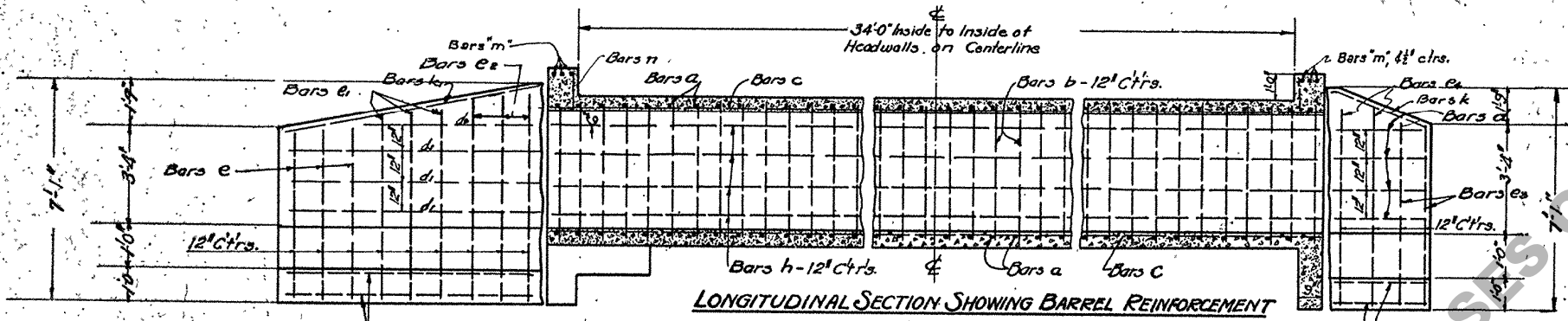
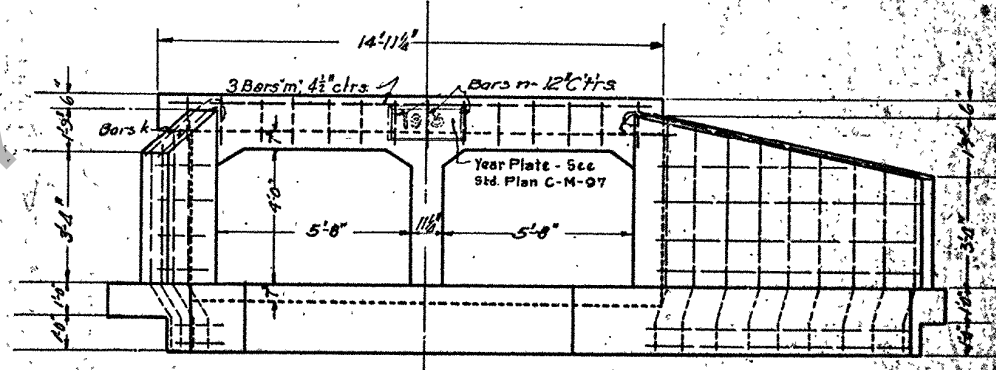


Note: Bill of Material is same as for Right Crossing.  
 Corner Reinforcing Steel for Barrel to be placed in Opposite Corners from those shown on Right Crossing.



LONGITUDINAL SECTION SHOWING BARREL REINFORCEMENT

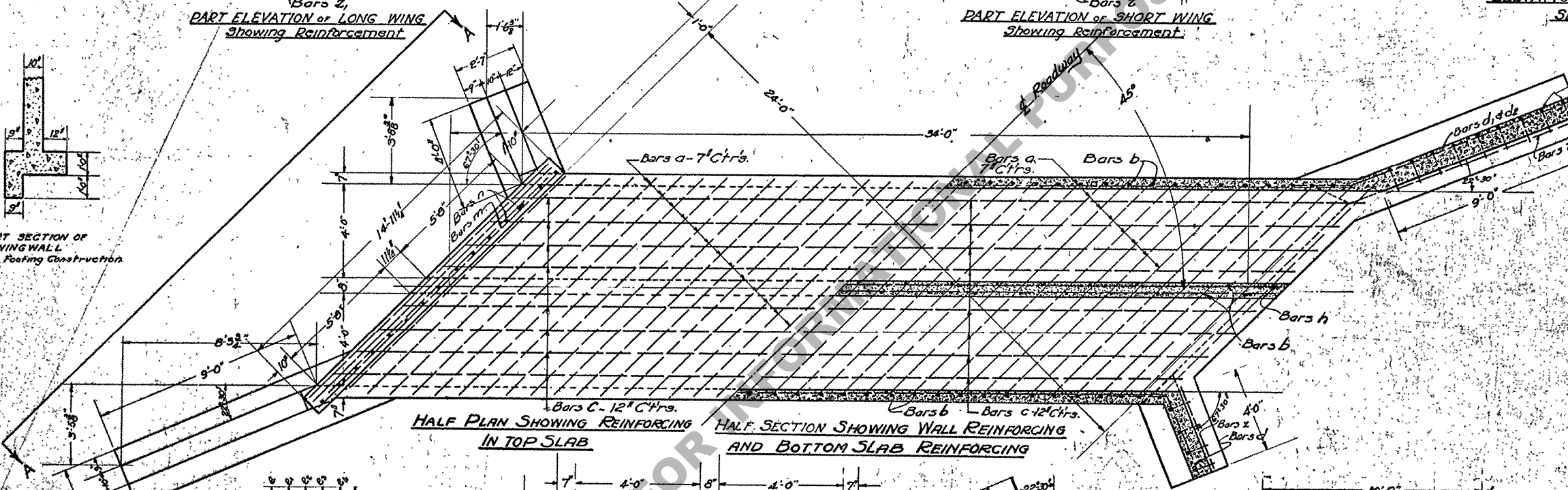


ELEVATION OF HEADWALL SECTION A-A

PART ELEVATION OF LONG WING Showing Reinforcement

PART ELEVATION OF SHORT WING Showing Reinforcement

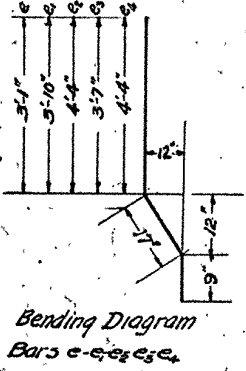
**GENERAL NOTES**  
 General Specifications, La. Highway Commission March 1922  
 Concrete - All Class "A" 1:2:4 Mix.  
 Reinforcing - Mild steel deformed Bars  
 All exposed corners to be chamfered.  
 All exposed surfaces to be rubbed smooth while concrete is fresh.  
 All reinforcing bars located 1 1/2" from surface unless shown otherwise.  
 Dimensions relating to bars are to centers of bars.  
 All reinforcing to be rigidly held in place against displacement during placing of concrete and all bars to be wired at intersections.



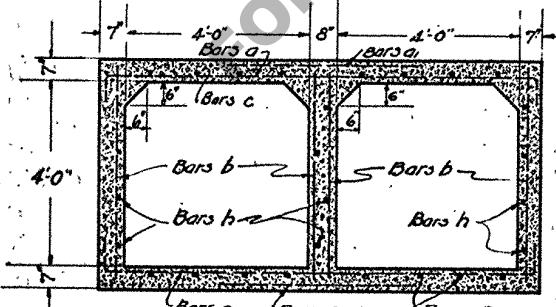
HALF PLAN SHOWING REINFORCING IN TOP SLAB

HALF SECTION SHOWING WALL REINFORCING AND BOTTOM SLAB REINFORCING

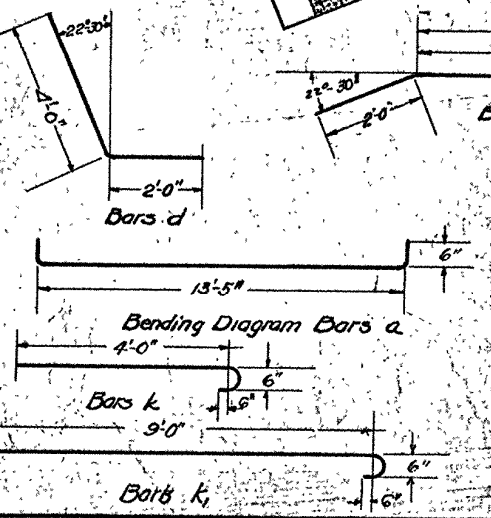
Mark	Size	No. Req'd	Length	Location	Total Length
a	1/2"	88	14'-5"	Slabs Trans.	1268'-8"
a	"	84	4'-0"	Slabs Trans.	336'-0"
b	"	111	4'-9"	Walls Vertical	527'-3"
c	"	16	36'-0"	Slabs Longitudinal	581'-0"
d	"	8	5'-9"	Long. in Wing Walls	46'-0"
d	"	6	12'-0"	"	72'-0"
d	"	2	10'-6"	"	21'-0"
e	"	6	5'-3"	Vert. in Wing Walls	31'-6"
e	"	6	6'-0"	"	36'-0"
e	"	6	6'-6"	"	39'-0"
e	"	4	5'-9"	"	23'-0"
e	"	4	6'-6"	"	26'-0"
z	"	4	4'-0"	Footings Short Wing	16'-0"
z	"	4	9'-6"	Footings Long Wing	38'-0"
h	"	12	36'-0"	Horiz. in Walls	432'-0"
m	"	6	14'-7"	Trans. Headwalls	87'-6"
n	"	30	1'-3"	Vert. Headwalls	37'-0"
k	"	4	5'-3"	Top Wing Walls	21'-0"
k	"	4	10'-3"	"	41'-0"
Total Length of Bars					3684'-9"
Total Lbs. Reinforcing Steel					3132
Cu. Yds. Class "A" Concrete					35.27
Cu. Yds. Concrete per Lin. Ft. of Barrel					.715
Pounds Rein. Steel per Lin. Ft. of Bbl.					73.865



Bending Diagram Bars e-e-e-e-e



CROSS SECTION OF BARREL Scale 1"=1'-0"



Bending Diagram Bars a

Bars k

Bars k

**STANDARD CONCRETE BOX CULVERT DOUBLE 4x4 45° CROSSING**

Special B-2-46 Plan

Louisiana Highway Commission

Baton Rouge La.

August 1925

Scale 1/4" = 1'-0"

APPROVED

SAFETY HIGHWAY ENGINEER

Revised 7/12/31

Void 12-20-45