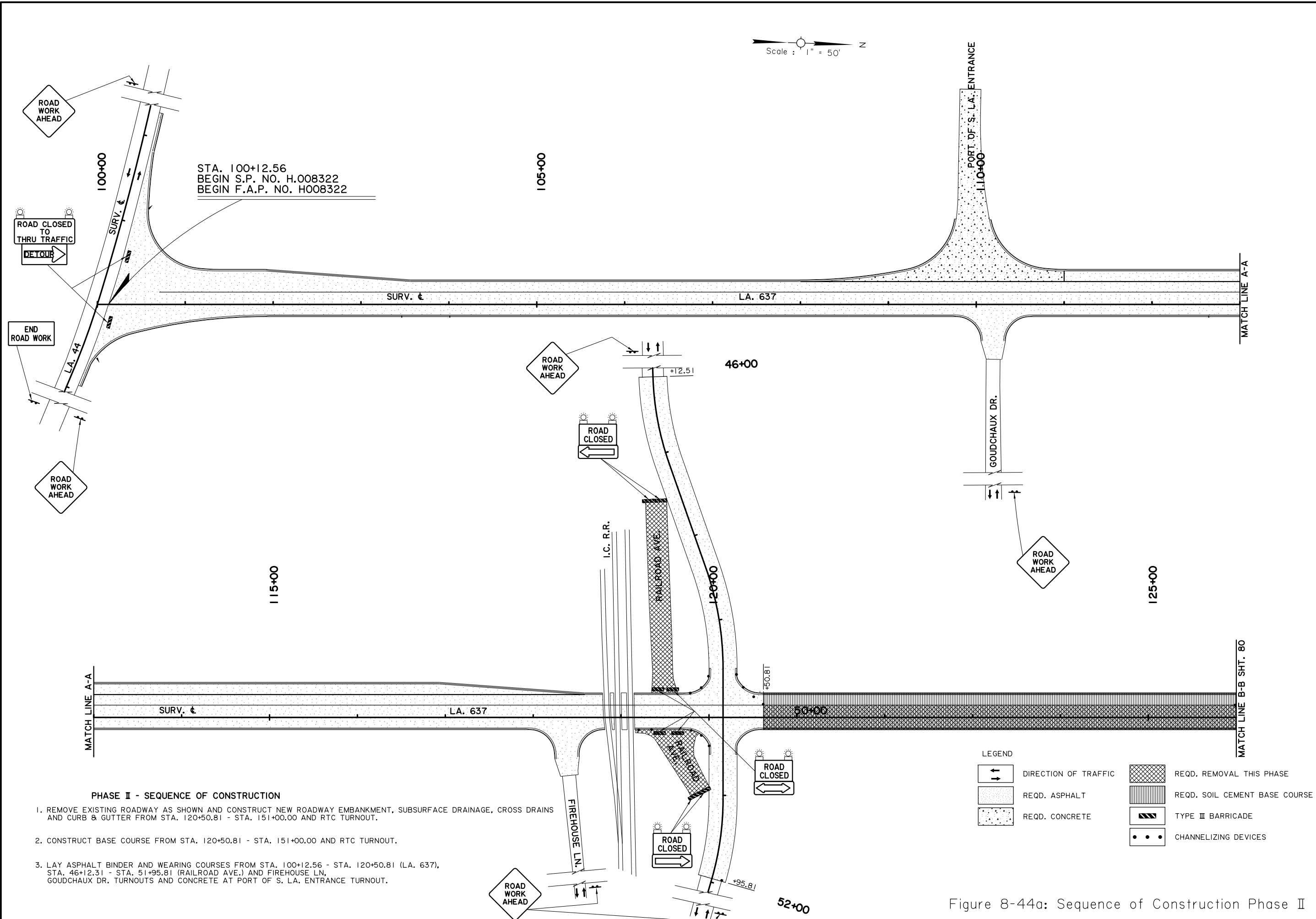




Scale : 1" = 50'



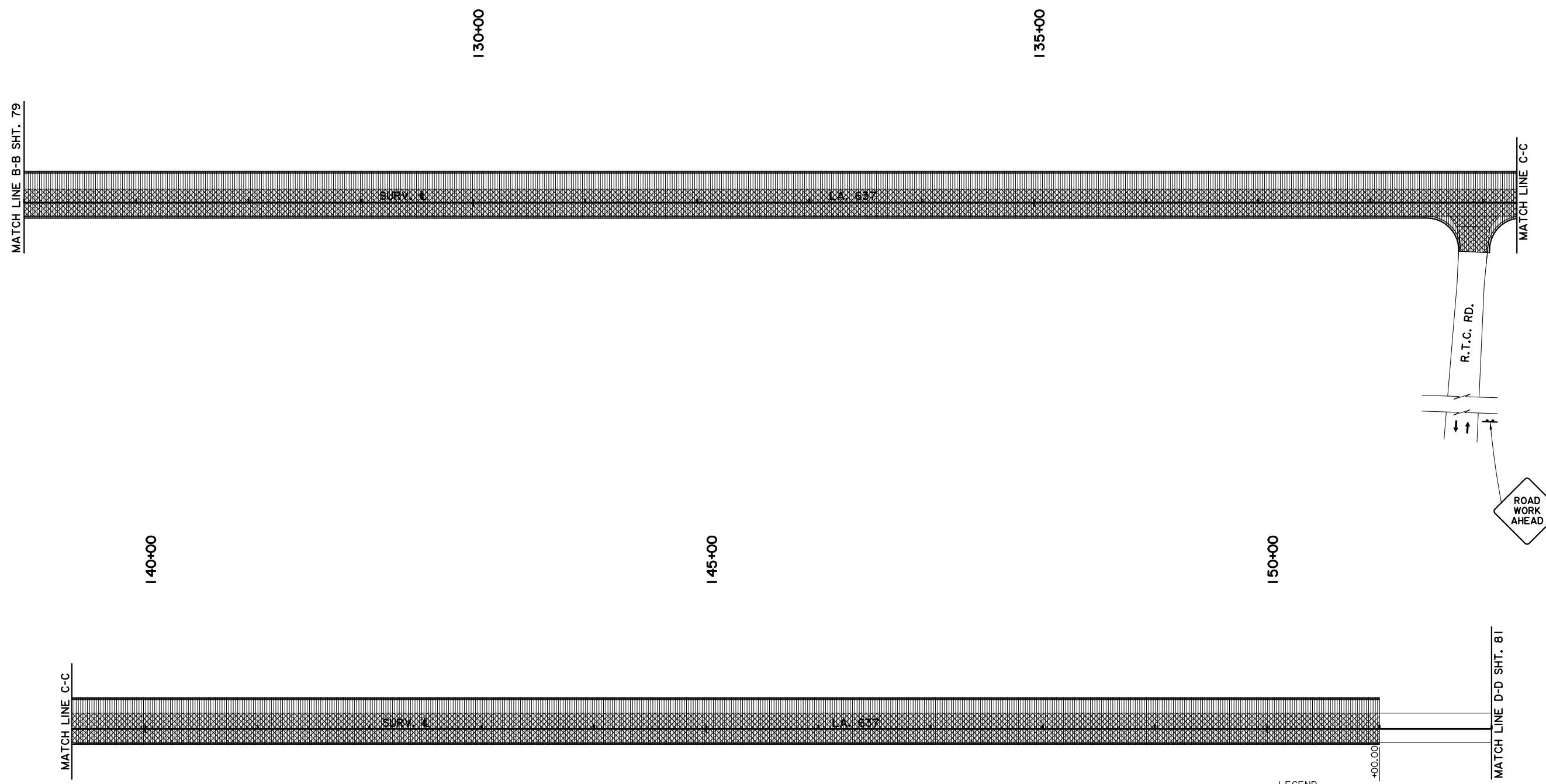
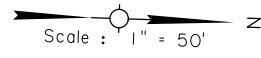
PHASE II - SEQUENCE OF CONSTRUCTION

1. REMOVE EXISTING ROADWAY AS SHOWN AND CONSTRUCT NEW ROADWAY EMBANKMENT, SUBSURFACE DRAINAGE, CROSS DRAINS AND CURB & GUTTER FROM STA. 120+50.81 - STA. 151+00.00 AND RTC TURNOUT.
2. CONSTRUCT BASE COURSE FROM STA. 120+50.81 - STA. 151+00.00 AND RTC TURNOUT.
3. LAY ASPHALT BINDER AND WEARING COURSES FROM STA. 100+12.56 - STA. 120+50.81 (LA. 637), STA. 46+12.31 - STA. 51+95.81 (RAILROAD AVE.) AND FIREHOUSE LN, GOUDCHAUX DR. TURNOUTS AND CONCRETE AT PORT OF S. L.A. ENTRANCE TURNOUT.

LEGEND

- [Symbol: Arrow with direction] DIRECTION OF TRAFFIC
- [Symbol: Dotted pattern] REQD. ASPHALT
- [Symbol: Stippled pattern] REQD. CONCRETE
- [Symbol: Cross-hatched pattern] REQD. REMOVAL THIS PHASE
- [Symbol: Horizontal lines] REQD. SOIL CEMENT BASE COURSE
- [Symbol: Diagonal lines] TYPE III BARRICADE
- [Symbol: Dashed line] CHANNELIZING DEVICES

Figure 8-44a: Sequence of Construction Phase II



PHASE II - SEQUENCE OF CONSTRUCTION

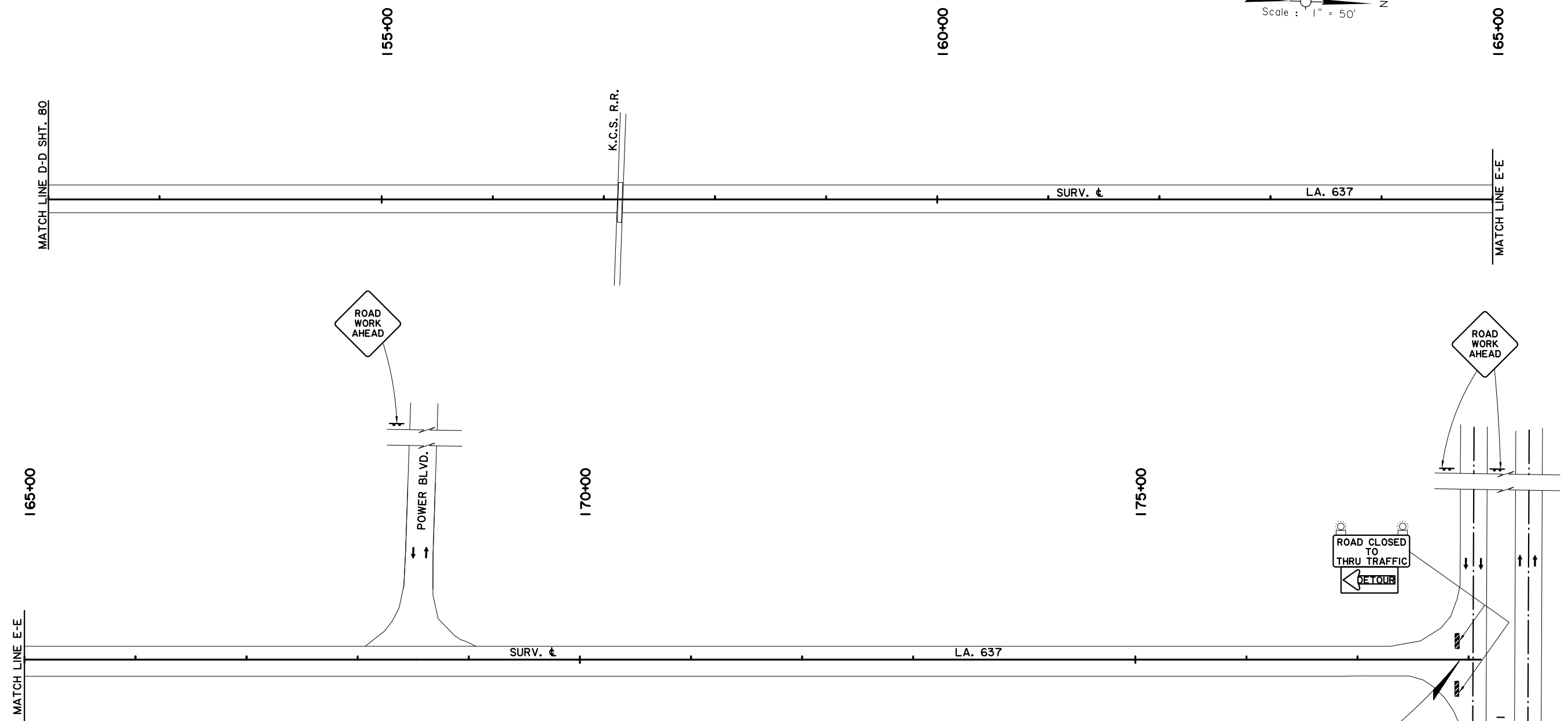
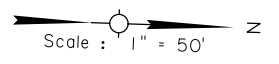
1. REMOVE EXISTING ROADWAY AS SHOWN AND CONSTRUCT NEW ROADWAY EMBANKMENT, SUBSURFACE DRAINAGE, CROSS DRAINS AND CURB & GUTTER FROM STA. 120+50.81 - STA. 151+00.00 AND RTC TURNOUT.
2. CONSTRUCT BASE COURSE FROM STA. 120+50.81 - STA. 151+00.00 AND RTC TURNOUT.
3. LAY ASPHALT BINDER AND WEARING COURSES FROM STA. 100+12.56 - STA. 120+50.81 (LA. 637), STA. 46+12.31 - STA. 51+95.81 (RAILROAD AVE.) AND FIREHOUSE LN, GOUDCHAUX DR. TURNOUTS AND CONCRETE AT PORT OF S. L.A. ENTRANCE TURNOUT.

LEGEND

	REQD. REMOVAL THIS PHASE
	REQD. SOIL CEMENT BASE COURSE
	TYPE III BARRICADE
	CHANNELIZING DEVICES
	DIRECTION OF TRAFFIC
	REQD. ASPHALT
	REQD. CONCRETE

Figure 8-44b: Sequence of Construction Phase II

DESIGNED	CHECKED	DESIGNED	CHECKED	PARISH	ST. JOHN THE BAPTIST	SHEET NUMBER	81	
DETAILED	CHECKED	DETAILED	CHECKED	CONTROL SECTION	848-12			
SERIES	NUMBER	SERIES	NUMBER	STATE PROJECT	H.008322			
	6 OF 12		6 OF 12					
REVISION OR CHANGE ORDER DESCRIPTION							NO.	DATE
BY								



PHASE II - SEQUENCE OF CONSTRUCTION

1. REMOVE EXISTING ROADWAY AS SHOWN AND CONSTRUCT NEW ROADWAY EMBANKMENT, SUBSURFACE DRAINAGE, CROSS DRAINS AND CURB & GUTTER FROM STA. 120+50.81 - STA. 151+00.00 AND RTC TURNOUT.
2. CONSTRUCT BASE COURSE FROM STA. 120+50.81 - STA. 151+00.00 AND RTC TURNOUT.
3. LAY ASPHALT BINDER AND WEARING COURSES FROM STA. 100+12.56 - STA. 120+50.81 (LA. 637), STA. 46+12.31 - STA. 51+95.81 (RAILROAD AVE.) AND FIREHOUSE LN, GOUDCHAUX DR. TURNOUTS AND CONCRETE AT PORT OF S. LA. ENTRANCE TURNOUT.

LEGEND	
	REQD. REMOVAL THIS PHASE
	REQD. SOIL CEMENT BASE COURSE
	TYPE III BARRICADE
	CHANNELIZING DEVICES
	DIRECTION OF TRAFFIC
	REQD. ASPHALT
	REQD. CONCRETE

Figure 8-44c: Sequence of Construction Phase II

**SUGGESTED
SEQUENCE OF CONSTRUCTION
AND
CONSTRUCTION SIGNING LAYOUT**

LA 637: PORT OF S. LOUISIANA CONNECTOR

DOTD
ROAD DESIGN