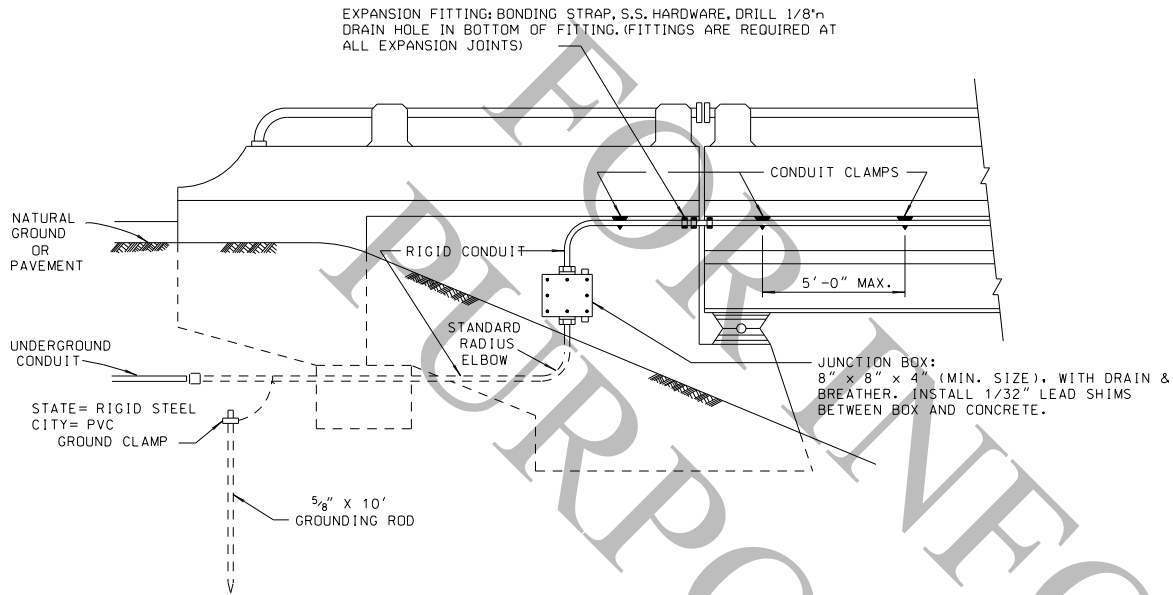
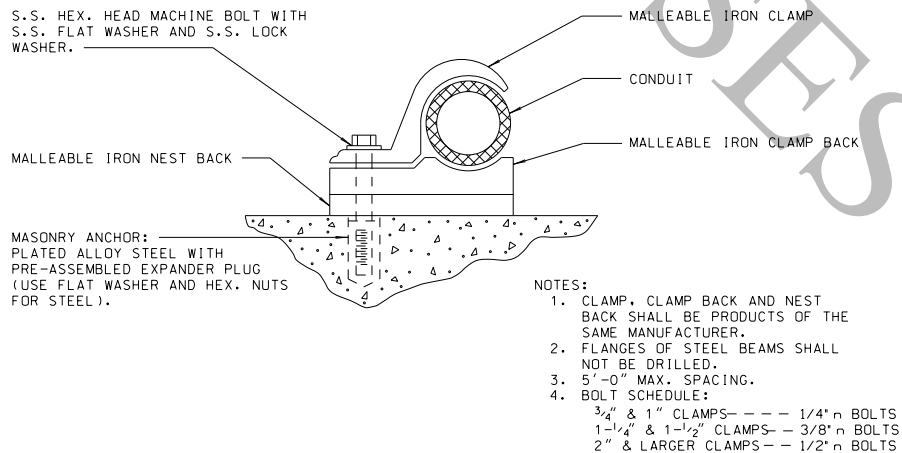


TYPICAL CONDUIT INSTALLATION ON BRIDGE STRUCTURE

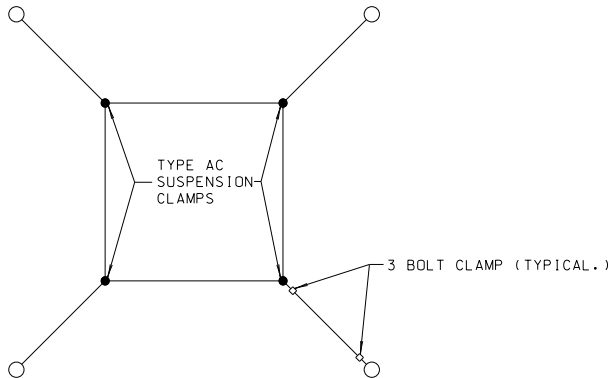


CONDUIT FASTENING DETAIL

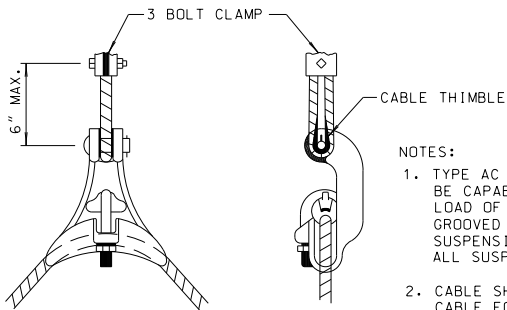


SUSPENDED BOX INSTALLATION

ALSO USED ON BRIDLE SPAN INSTALLATION



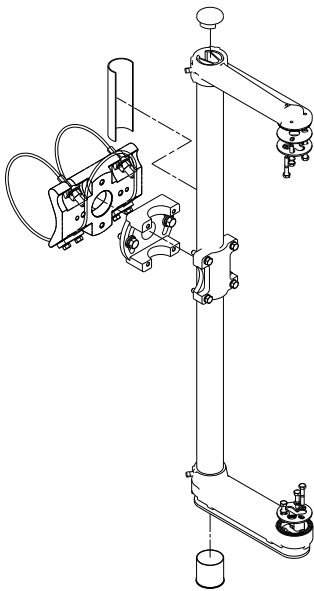
TYPE AC SUSPENSION CLAMP



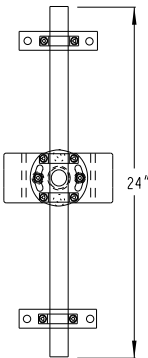
- NOTES:
1. TYPE AC SUSPENSION CLAMPS SHALL BE CAPABLE OF WITHSTANDING A TENSILE LOAD OF 25,000 POUNDS AND SHALL BE GROOVED FOR 3/8" CABLE. TYPE AC SUSPENSION CLAMPS SHALL BE USED FOR ALL SUSPENDED BOX INSTALLATIONS.
 2. CABLE SHALL HAVE 3' OF SPARE CABLE FORMED AS A LOOP ON EACH SIDE OF CLAMP.

INSTALLATION DETAIL OF MAST ARM ATTACHMENTS FOR SIGN AND SIGNAL BRACKETS

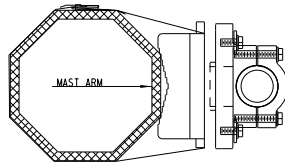
SIGNAL - ISOMETRIC VIEW



SIGN - FRONT VIEW

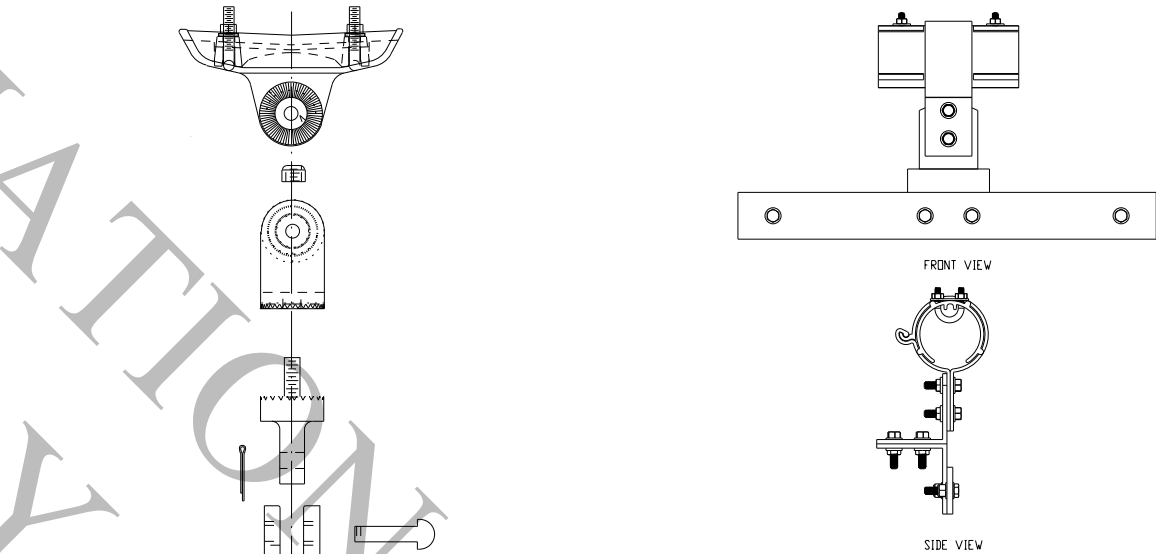


SIGN - SIDE VIEW





- NOTE:
1. BRACKETS SHALL UTILIZE A STRANDED CABLE TO ATTACH BRACKET TO ARM.
 2. ATTACHMENTS SHALL BE ADJUSTABLE TO PLUMB.
 3. ADDITIONAL SIGN BACKING MAY BE REQUIRED FOR SIGNS LARGER THAN 36". APPROVAL OF PROJECT ENGINEER REQUIRED PRIOR TO INSTALLATION.

SPAN WIRE SIGN BRACKET



- NOTES:
1. ALL MATERIAL FOR DEVICES SHOWN SHALL BE CAST ALUMINUM CONSTRUCTION WITH COATING TO PREVENT OXIDATION.
 2. SIGN MOUNTING BRACKET PRE-DRILLED WITH 1/2" HOLES (SEE DRAWING).
 3. BOTTOM OF SIGN SHALL BE WEIGHTED WITH STEEL BAR PAINTED TO RESIST CORROSION. BRACKET AND WEIGHT SHALL BE ATTACHED TO SIGN WITH HDG OR STAINLESS STEEL 3/8" BOLTS, WASHERS, AND NUTS.
 4. SPAN WIRE SADDLE SHALL BE DESIGNED TO FIT A CABLE RANGE OF 3/8" - 1/2".
 5. BRACKET SHALL BE INSTALLED SO THAT THE SIGN IS PLUMB AND PERPENDICULAR TO THE DRIVERS LINE OF VIEW.

SHEET NUMBER		PARISH		S. MCCARROLL		CHECK D. LORIO		DETAIL S. MCCARROLL		CHECK L. WANG		REVIEW		SERIES # 10 OF 14	
APPROVED BY CHIEF ENGINEER: 														DATE: Oct 1, 2025	
REVISION OR CHANGE ORDER DESCRIPTION														BY	
NO.														DATE	
TRAFFIC SIGNAL DETAILS														TSD-09	
HARDWARE DETAILS															
															
STANDARD PLAN															