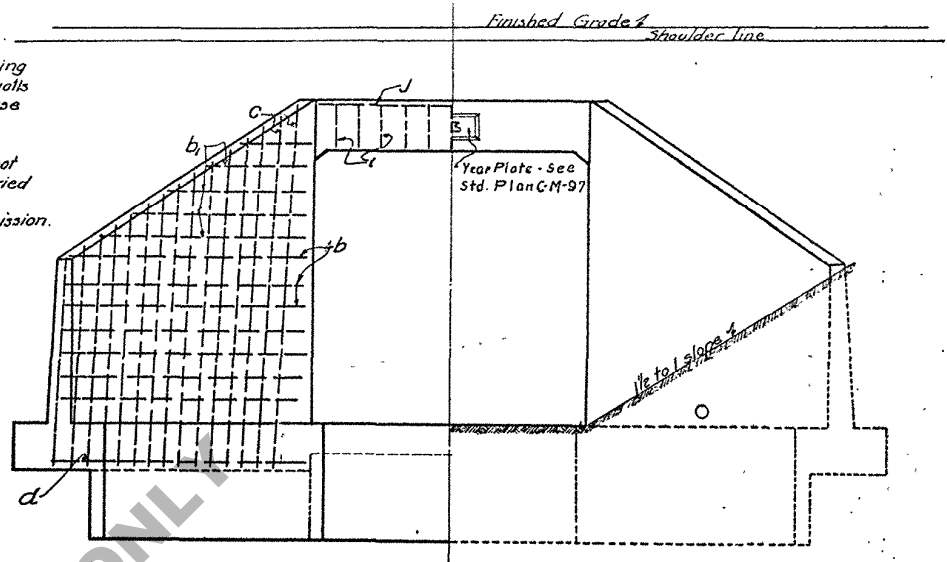
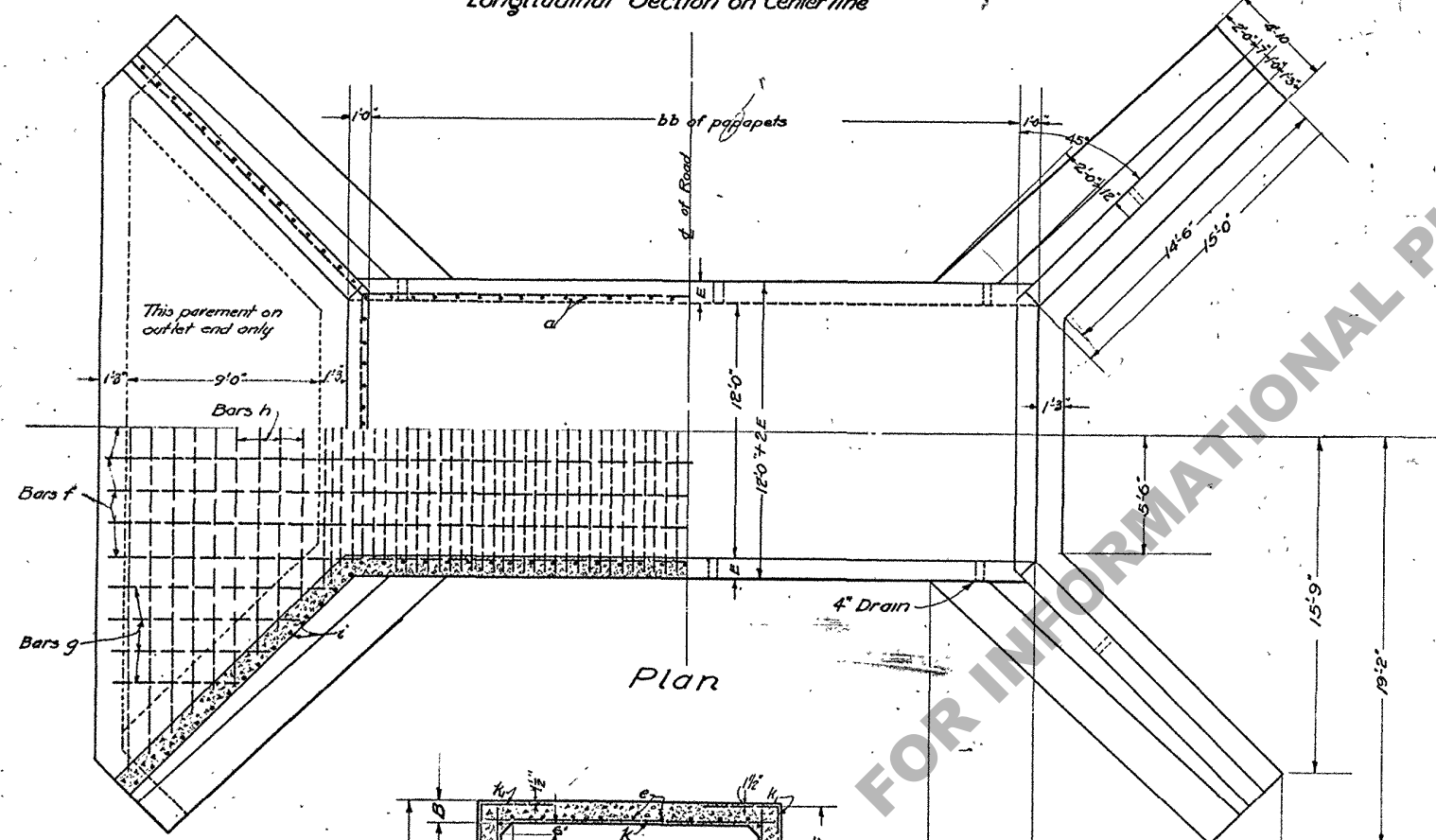


General Notes:-
 Longitudinal bars b and b₁ to be continuous, splicing of bars in no case to occur at junction of wing walls and barrel. If longitudinal bars are spliced use a 2'-0" lap. Bill of material does not include splices.
 Pavement at outlet end to be level. Barrel on not less than 1% grade. Foundations to be carried deeper if necessary.
 Specifications of Louisiana Highway Commission.



Elevation of Inlet

Longitudinal Section on Center line



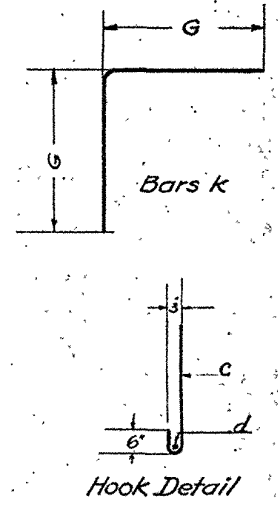
Plan

Bill of Reinforcing

Fills 2' to 7' Inclusive - 27'-0" b-b of parapets

Description of bars	Mark.	Number	Size	Spacing	Length	Weight
Walls, vertical	a	56	3/4" φ	1'-0"	14'-0"	1176
Walls and wings, horizontal	b	14	1/2" φ	1'-0"	57'-9"	688
Walls and wings, horizontal	b ₁	10	1/2" φ	1'-0"	variable	384
Wings, vertical	c	60	3/4" φ	1'-0"	Variable	1159
Wings, Longitudinal in footing	d	4	1/2" φ		15'-0"	51
Slab, longitudinal	e	10	1/2" φ		28'-9"	244
Floor longitudinal	f	9	3/8" φ	1'-6"	41'-3"	768
Pavement longitudinal	g	8	3/8" φ	1'-6"	Variable	103
Pavement Transverse	h	9	1/2" φ	1'-0"	Variable	184
Parapet, Vertical	t	26	1/2" φ	1'-0"	1'-11"	42
Parapet, horizontal	j	2	1/2" φ		12'-6"	21
Total of Constant						4812

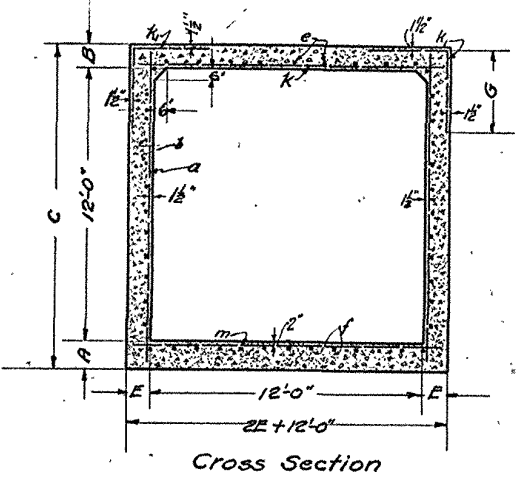
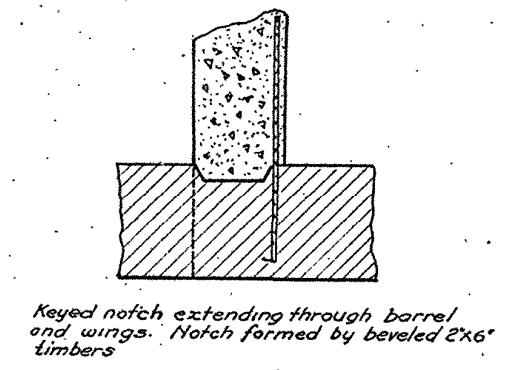
Slab Transvers bars K and k ₁				Floor Transverse bars m						
Feet. Fill	Number	Size	Spacing	Length	Weight	Number	Size	Spacing	Length	Weight
27	2'	44	3/8" φ	8"	1'-3" 13'-9" 7'-0"	47	3/8" φ	8"	13'-9"	1318
30	3'	48	3/8" φ	8"	1'-3" 13'-8" 7'-0"	52	3/8" φ	8"	13'-9"	1459
33	4'	60	3/8" φ	7"	1'-6" 13'-8" 8'-0"	64	3/8" φ	7"	13'-9"	1795
36	5'	65	3/8" φ	7"	1'-6" 13'-9" 8'-0"	70	3/8" φ	7"	13'-9"	1964
39	6'	70	3/8" φ	7"	1'-6" 13'-11" 8'-0"	76	3/8" φ	7"	13'-9"	2132
42	7'	87	3/8" φ	6"	1'-3" 13'-11" 8'-0"	93	3/8" φ	6"	13'-9"	2609



Variable Bars

Mark	Short Bar	Variation	long bar	Number Same Length
b ₁	36'-5"	4'-4"	53'-9"	2
c	9'-8"	5'-2"	16'-1"	4
g	4'-0"	1'-6"	8'-6"	2
h	16'-0"	2'-0"	32'-0"	1

Note: 4" Drains or Weep Holes to be placed in Walls of Barrel and Wing Walls @ 10'-0" Centers. Place about one (1) Cu. Ft. of large size gravel or loose rock behind and around each Drain.



Cross Section

Fill	DIMENSIONS						Quantities per 1 ft. barrel		TOTAL QUANTITIES	
	A	B	C	E	F	G	Cu. Yds. Concrete	Pounds Steel	Cu. Yds. Concrete	Pounds Steel
2'	1'-3"	1'-0"	14'-3"	1'-0"	1'-2"	3'-6"	2.01	183.0	27'-0"	138.2
3'	1'-4"	1'-1"	14'-5"	1'-0"	1'-4"	3'-6"	2.15	183.0	30'-0"	147.0
4'	1'-4"	1'-1"	14'-5"	1'-0"	1'-1"	4'-0"	2.15	201.0	33'-0"	153.45
5'	1'-6"	1'-3"	14'-9"	1'-0"	1'-1"	4'-0"	2.33	201.0	36'-0"	166.5
6'	1'-7"	1'-4"	14'-11"	1'-1"	1'-0"	4'-0"	2.47	201.0	39'-0"	179.5
7'	1'-7"	1'-4"	14'-11"	1'-1"	1'-0"	4'-0"	2.47	221.0	42'-0"	186.0

STANDARD

12'X12' CONCRETE BOX CULVERT

Flaring Wing Walls

LOUISIANA HIGHWAY COMMISSION

SCALE 1/4" = 1'-0" BATON ROUGE, LA.

Revised Steel Quantities 8/22/29 (J.F.H.)

Approved