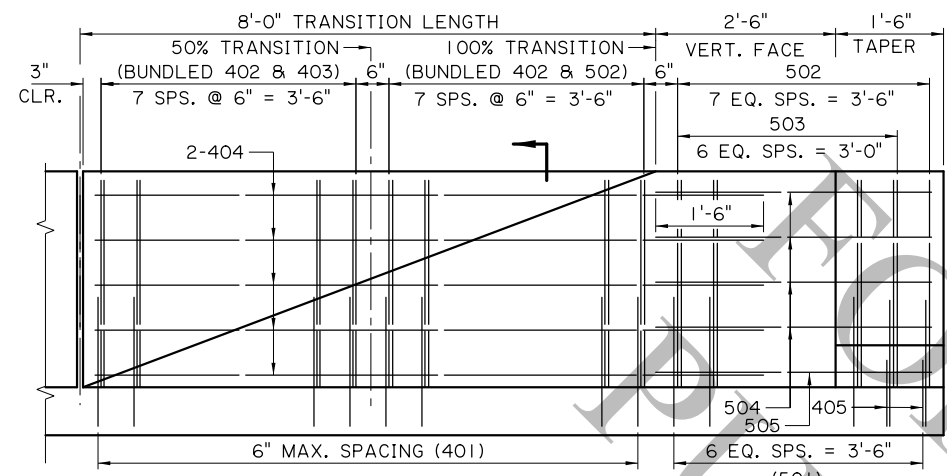
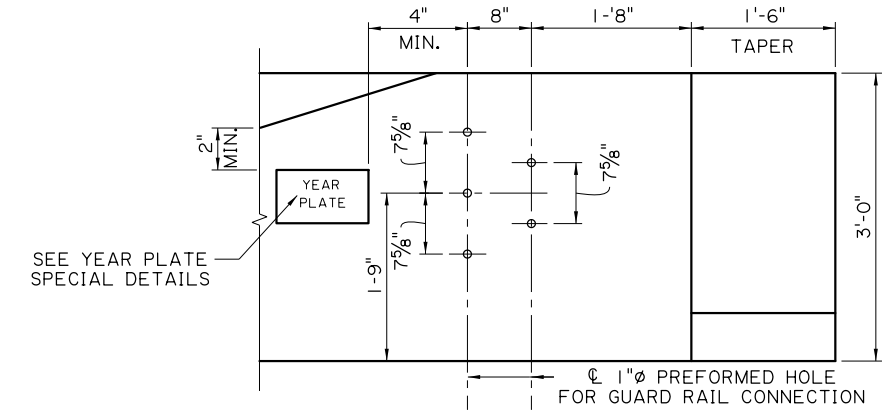


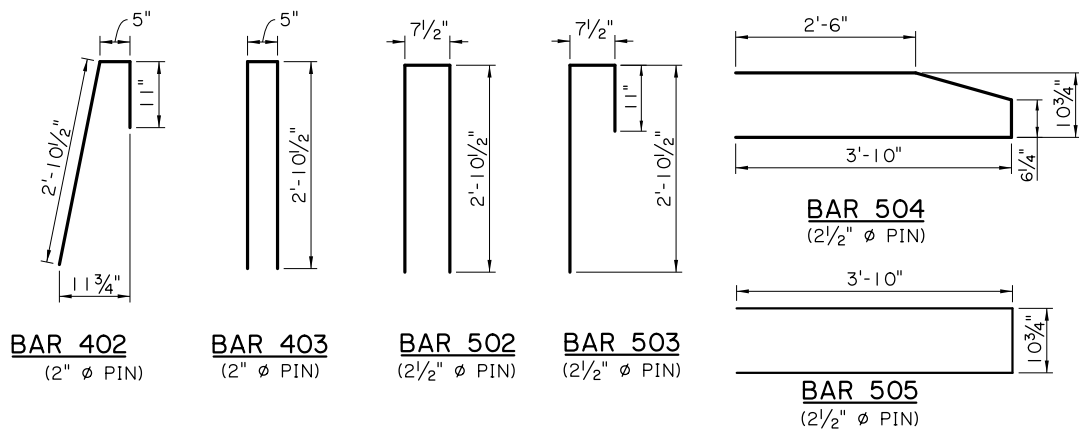
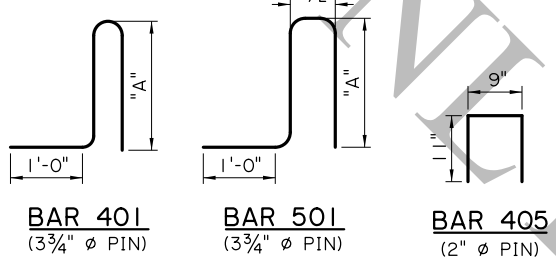
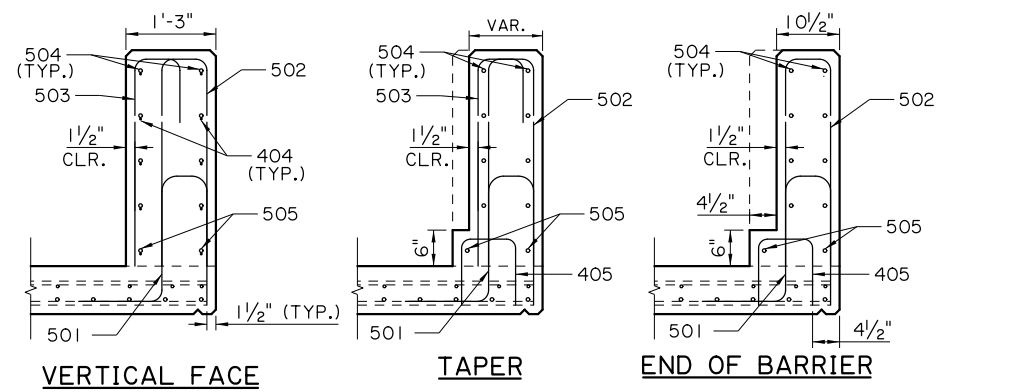
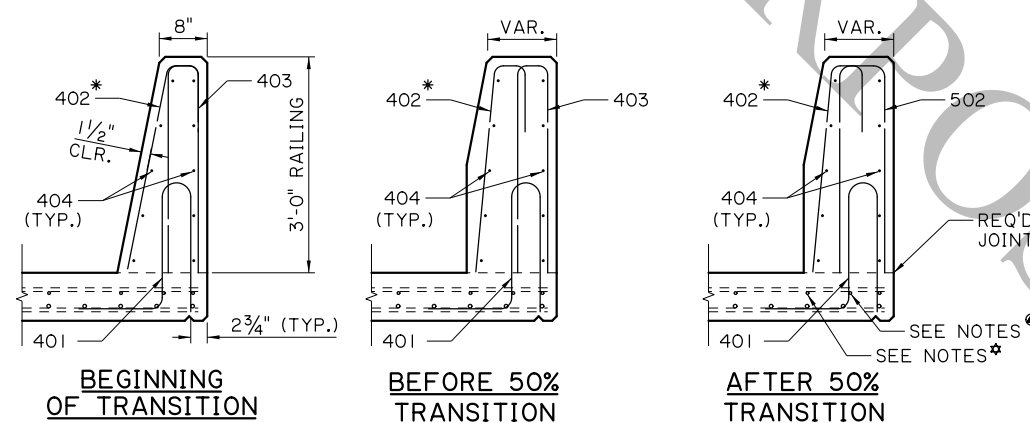
11/25/2025 10:12: IP_PWP:q1226615\BD.7.1.3.03 - 36in Single Slope Barrier Transition (Span)



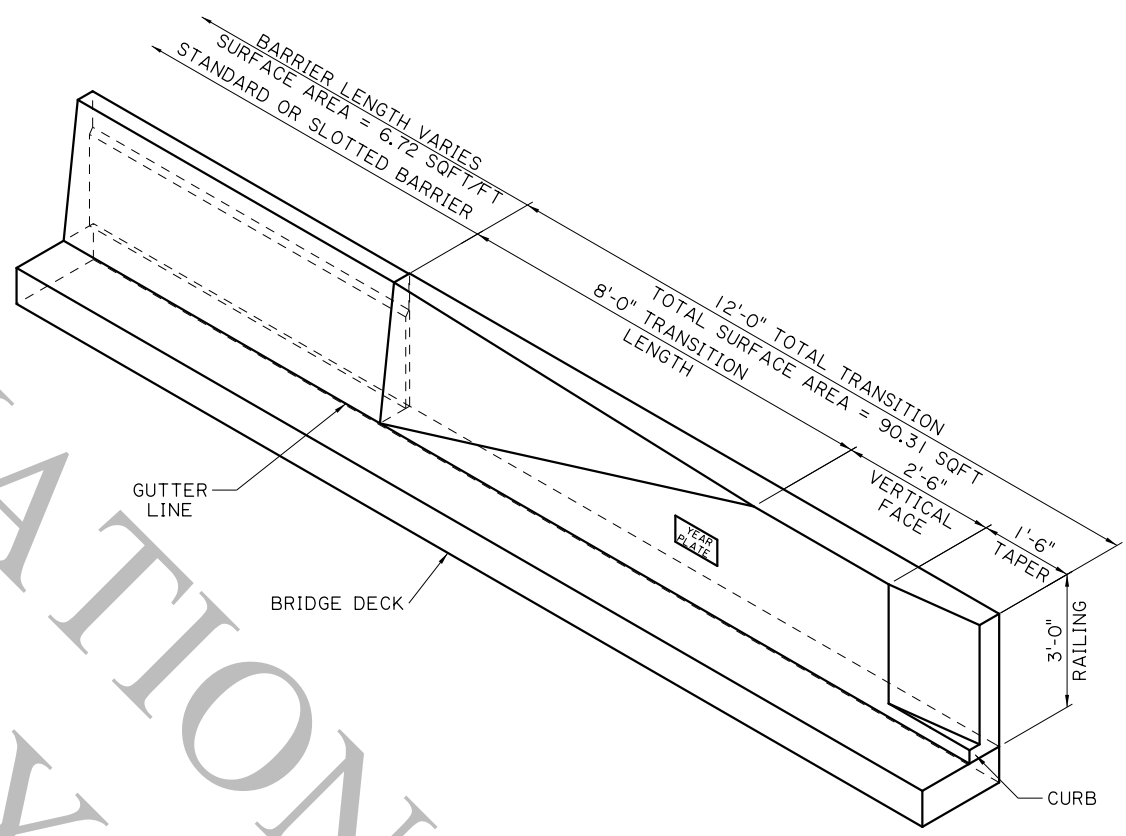
BARRIER RAILING TRANSITION ELEVATION



GUARD RAIL CONNECTION DETAIL
SEE HIGHWAY GUARD RAIL (MASH) STANDARD PLANS FOR MORE INFORMATION



401 & 501 BAR DIMENSIONS	
DIMENSION	"A"
8" DECK	1'-9 1/2"
8 1/2" DECK	1'-10"
9" DECK	1'-10 1/2"
9 1/2" DECK	1'-11"
13" SLAB SPAN	2'-2"
14 1/2" SLAB SPAN	2'-3"



- NOTES:**
- SEE "BRIDGE BARRIER COMMON - GENERAL NOTES & INDEX" SHEET FOR GENERAL BRIDGE BARRIER NOTES.
 - REINFORCING STEEL DIMENSIONS SHOWN ARE APPLICABLE FOR DECK THICKNESSES SHOWN IN TABLE. ADJUSTMENTS SHALL BE MADE FOR DECKS AND SPANS WITH OTHER THICKNESSES. SEE SPAN DETAILS FOR DECK THICKNESS.
 - CURB SHALL BE POURED MONOLITHIC WITH BARRIER.
 - AT THE CONTRACTORS OPTION, AN ADDITIONAL BAR CAN BE PLACED IN THE DECK TO AID REBAR PLACEMENT.
 - TOP LONGITUDINAL SLAB BAR MAY BE ADJUSTED Laterally ±3" TO TIE REINFORCING.
 - ADJUST ANGLE OF LEG AS NEEDED TO MAINTAIN MIN. COVER AT FACE OF BARRIER.

SHEET NUMBER		PARISH	CONTROL SECTION	STATE PROJECT
DESIGN CHECK	S. MAZUR	CHECK	C. GAUDRY	REVIEW
DETAIL CHECK	S. MAZUR	CHECK	C. GAUDRY	REVIEW
SERIES #	1 OF 1	DATE	11/26/2025	
APPROVED BY CHIEF ENGINEER				
REVISION OR CHANGE ORDER DESCRIPTION				
NO.				
DATE				
TRANSITION ON BRIDGE SPAN 36" SINGLE SLOPE BRIDGE BARRIER				
STANDARD PLAN				