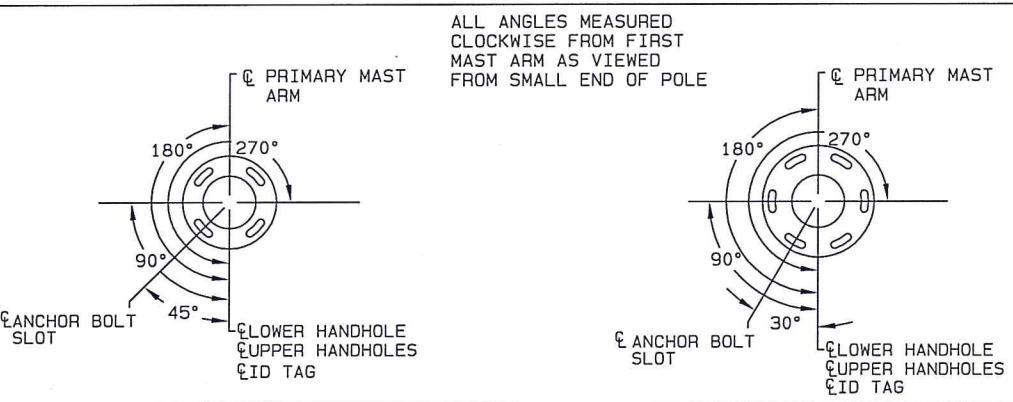
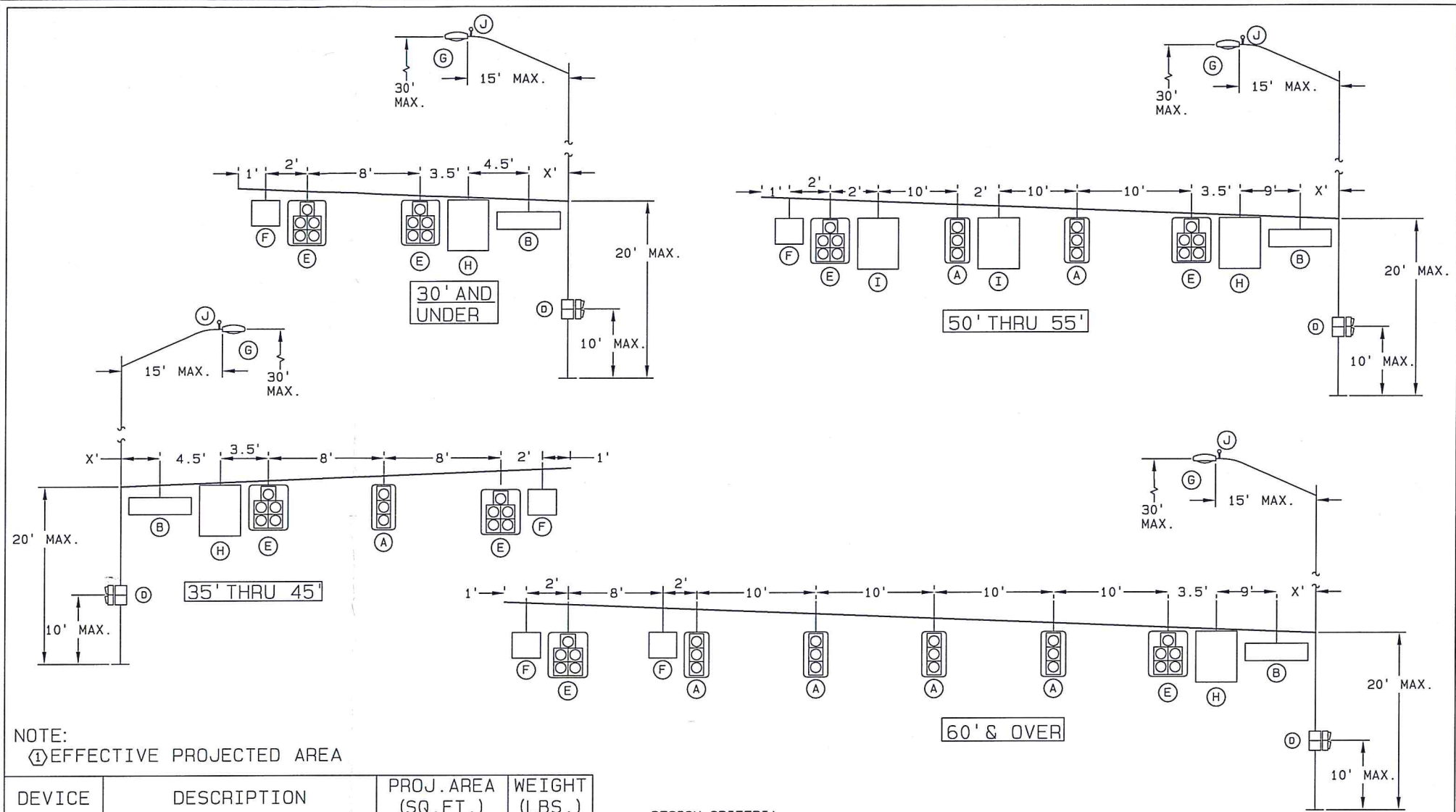


LUMINAIRE EXTENSION DATA			
BASE DIA. (IN)	TOP DIA. (IN)	WALL THK.	LENGTH (FT)
10.00	9.16	11 GA	6.00



RADIAL INDEX



NOTE:
 (1) EFFECTIVE PROJECTED AREA

DEVICE	DESCRIPTION	PROJ. AREA (SQ. FT.)	WEIGHT (LBS.)
A	SIGNAL 12"-3 SEC. SIGNAL W/BACKPLATES	10.40 (1)	56
B	SIGN 72"x18" STREET NAME SIGN	9.00	36
C	SIGNAL 12"-3 SEC. SIGNAL HEAD NO BACKPLATE	4.90 (1)	50
D	SIGNAL DUAL 2 SEC. PEDESTRIAN SIGNAL	8.00 (1)	80
E	SIGNAL 12"-5 SEC. SIGNAL WITH BACKPLATES	16.00 (1)	85
F	SIGN 24"x30" REGULATORY SIGN	5.00	20
G	LUMINAIRE LUMINAIRE	3.30	75
H	SIGN 36"x36" BLANK OUT REGULATORY SIGN (40"x40" OVERALL)	11.20	94
I	SIGN 30"x36" REGULATORY SIGN	7.50	30
J	VIDEO VIDEO DETECTOR CAMERA	1.00	9.9

DESIGN CRITERIA:
 THESE TRAFFIC SIGNAL SUPPORT STRUCTURES ARE DESIGNED IN ACCORDANCE WITH LOADING AND ALLOWABLE STRESS REQUIREMENTS OF 2009 AASHTO "STANDARDS SPECIFICATION FOR STRUCTURAL SUPPORTS FOR HIGHWAY SIGNS, LUMINAIRES AND TRAFFIC SIGNALS", FIFTH EDITION. WIND LOADS ARE BASED ON A BASIC WIND SPEED OF 130 MPH ISOTACH WITH A RECURRENCE INTERVAL OF 50 YEARS, AND A FATIGUE CATEGORY OF 2. FATIGUE LOADS ARE BASED ON THE REQUIREMENTS OF SECTION 11.7 AND THE FOLLOWING DESIGN LOADS:

- VORTEX SHEDDING: NOT APPLICABLE FOR STRUCTURES WITH A TAPER OF AT LEAST 0.14"/FT, PER AASHTO.
- NATURAL WIND GUSTS: THE YEARLY MEAN WIND SPEED FOR NATURAL WIND GUSTS WILL BE ASSUMED TO BE 11.2 MPH.
- GALLOPING: STRUCTURES ARE NOT DESIGNED TO RESIST PERIODIC GALLOPING FORCES.
- TRUCK-INDUCED GUST: STRUCTURES ARE NOT DESIGNED TO INCLUDE TRUCK-INDUCED GUSTS.
- ICE LOAD: STRUCTURES ARE DESIGNED TO INCLUDE AASHTO ICE LOADS.

LOADING INFORMATION



11/14/13

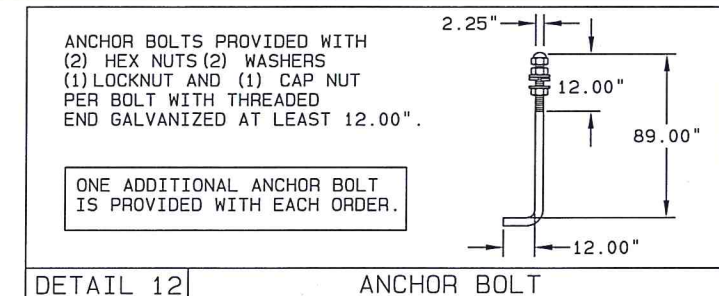
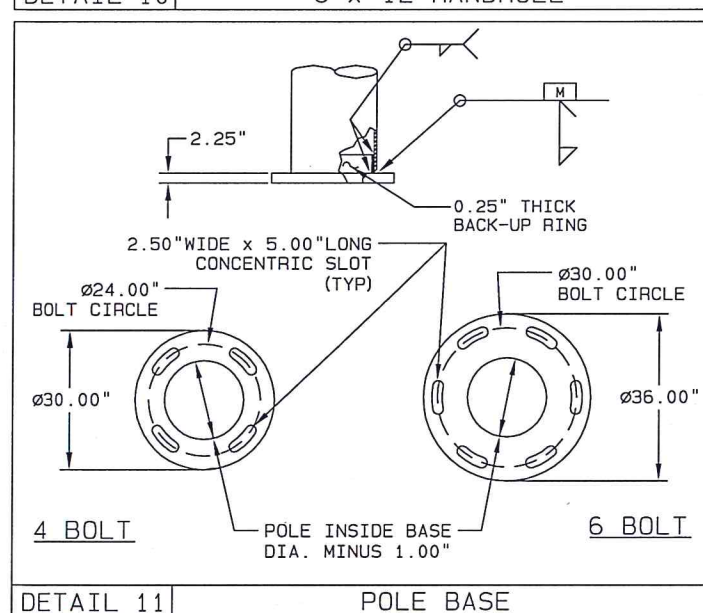
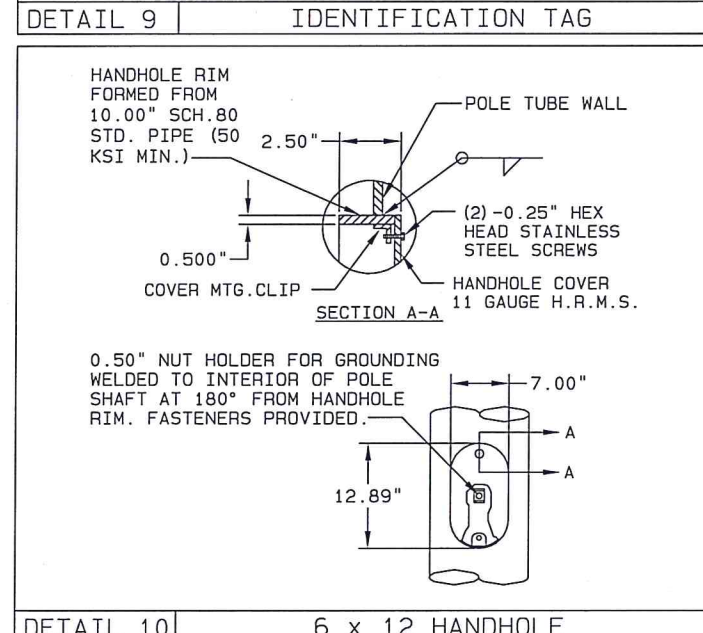
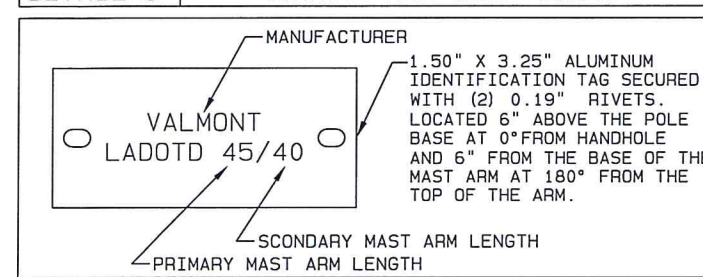
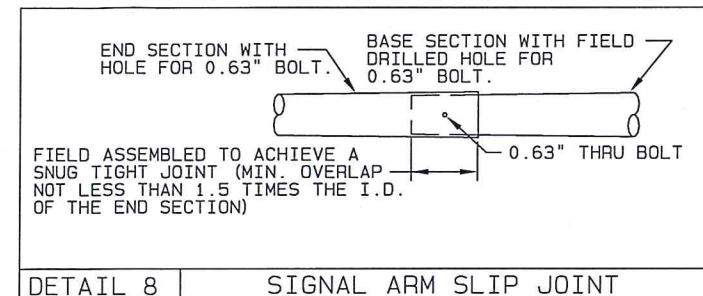
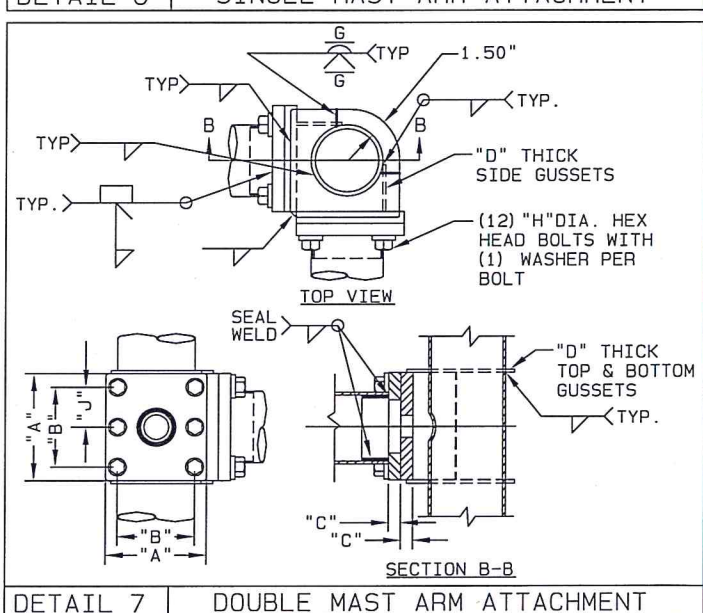
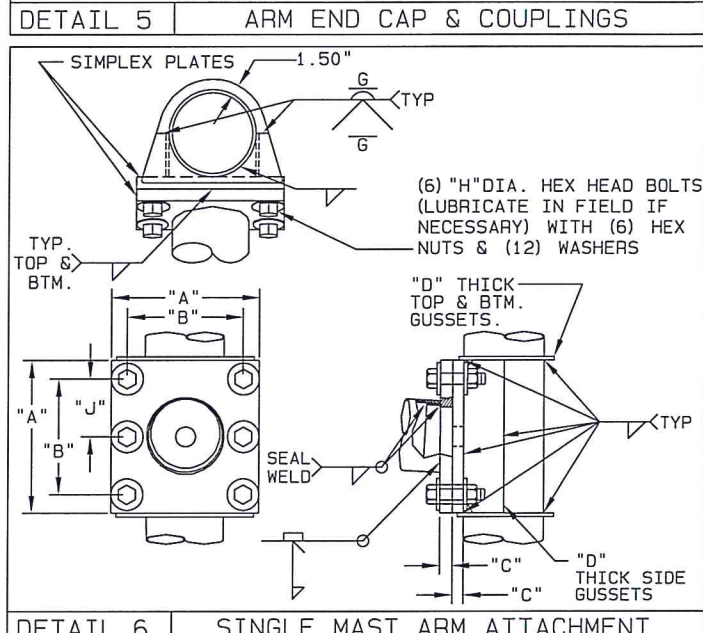
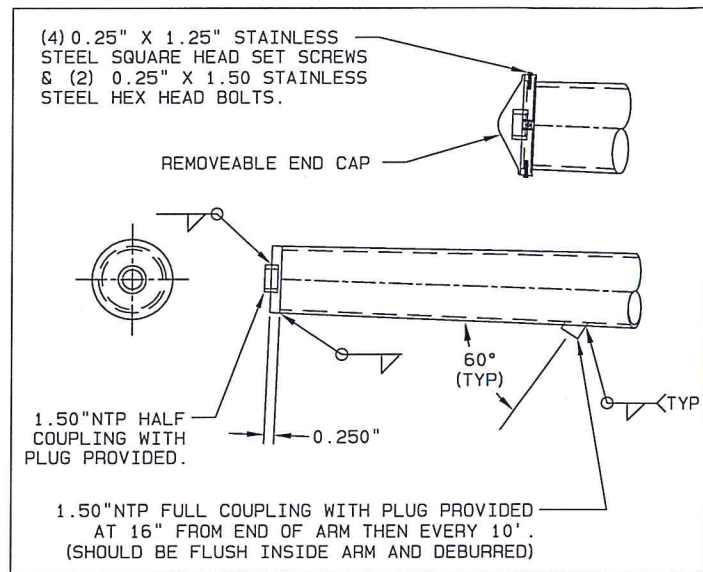
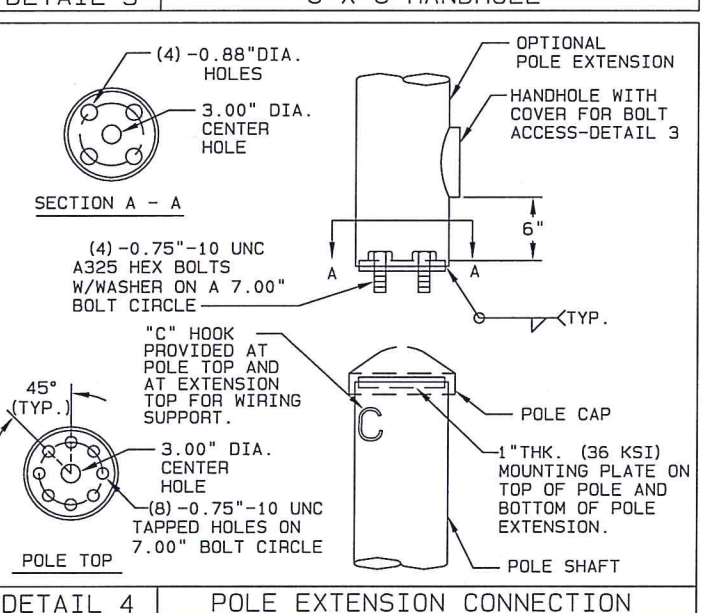
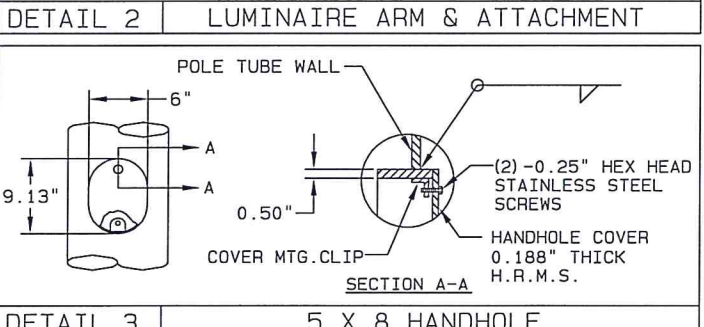
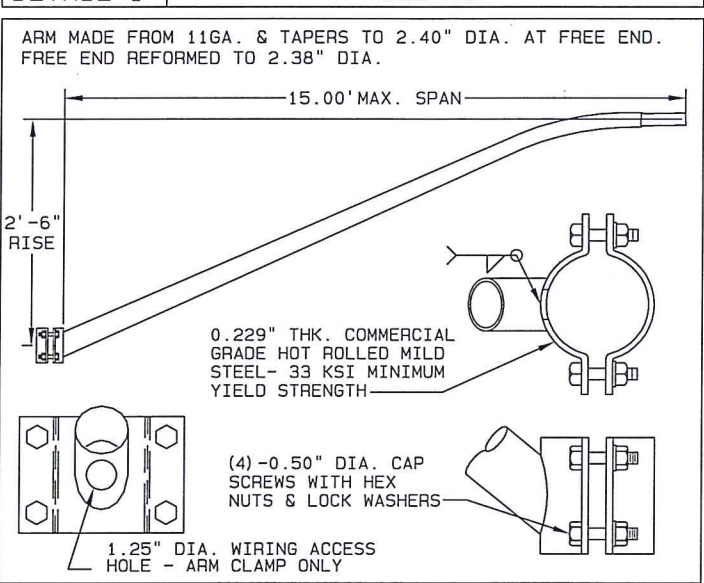
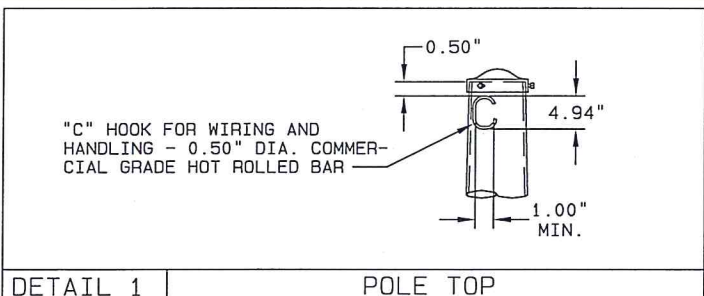
REV	DATE	BY	DESCRIPTION
AC19	01/14/13	BDS	02/04/13

TITLE STATE OF LOUISIANA
 TRAFFIC SIGNAL STRUCTURES

VALMONT INDUSTRIES, INC. RESERVES THE RIGHT TO INSTALL VARIOUS ENGINEER APPROVED, MATERIAL HANGING ACCOMMODATIONS TO FACILITATE THE MANUFACTURING PROCESS.



PAGE NUMBER: 1 OF 3
DRAWING NUMBER: DB01032
REV



TITLE STATE OF LOUISIANA
TRAFFIC SIGNAL STRUCTURES

VALMONT INDUSTRIES, INC. RESERVES THE RIGHT TO INSTALL VARIOUS, ENGINEER APPROVED, MATERIAL HANGING ACCOMMODATIONS TO FACILITATE THE MANUFACTURING PROCESS.

valmont
Valley, NE 68064
(402) 359-2201

PAGE NUMBER: 2 OF 3
DRAWING NUMBER: DB01032
REV



SINGLE MAST ARM POLE DATA

ARM SPAN (FT)	POLE DATA					MAST ARM ATTACHMENT DATA					
	BASE DIA. (IN)	TOP DIA. (IN)	GAUGE OR THK. (IN)	LENGTH (FT)	ANCHOR BOLT QTY.	"A" (IN)	"B" (IN)	"J" (IN)	"C" (IN)	"D" (IN)	"H" (IN)
20	13.00	9.92	3	22.00	4	17.75	14.50	7.25	1.50	0.250	1.00
25											
30	13.50	10.42	0.250	22.00	4	18.25	15.00	7.50	1.50	0.250	1.00
35	14.50	11.42	0.250	22.00	4	19.25	16.00	8.00	1.75	0.250	1.00
40	15.50	12.42	0.250	22.00	4	20.75	17.50	8.75	1.75	0.250	1.00
45	16.50	13.42	0.250	22.00	4	21.75	18.50	9.25	1.75	0.313	1.25
50	17.00	13.92	0.313	22.00	4	22.25	19.00	9.50	2.00	0.313	1.25
55	18.00	14.92	0.313	22.00	4	23.75	20.00	10.00	2.00	0.313	1.25
60	17.00	13.92	0.375	22.00	6	23.25	19.50	9.75	2.00	0.313	1.25
65	18.00	14.92	0.375	22.00	6	24.75	21.00	10.50	2.25	0.313	1.50
70	19.00	15.92	0.375	22.00	6	26.00	22.00	11.00	2.25	0.313	1.50

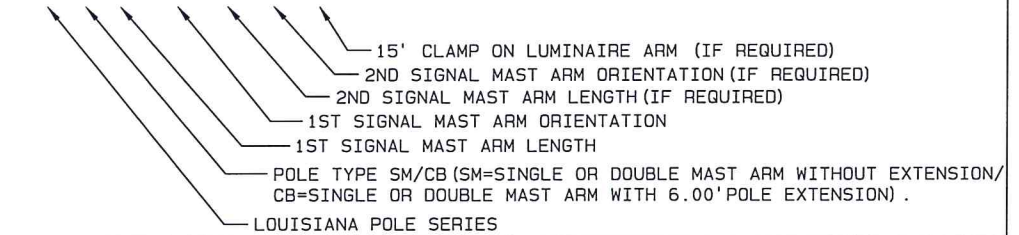
SIGNAL MAST ARM DATA

ARM SPAN (FT)	FIXED END DIA. (IN)	FREE END DIA. (IN)	GAUGE OR THICK (IN)	SECTION LENGTH (FT)
20.00	8.00	5.20	7	20.00
25.00	10.00	6.50	7	25.00
30.00	11.50	7.30	7	25.00
35.00	12.50	7.60	5	35.00
40.00	12.50	6.90	3	40.00
45.00	13.50	11.28	0.250	15.85
	12.00	7.56	7	31.72
50.00	14.00	11.28	0.313	19.42
	12.00	7.36	7	33.15
55.00	15.00	12.26	0.313	19.54
	13.00	7.66	7	38.15
60.00	15.50	12.26	0.375	23.11
	13.00	7.46	7	39.58
65.00	16.00	12.26	0.375	26.68
	13.00	7.26	7	41.01
70.00	16.50	12.26	0.375	30.26
	13.00	7.06	7	42.44

DOUBLE MAST ARM POLE DATA

1ST ARM SPAN (FT)	2ND ARM SPAN (FT)	POLE DATA					MAST ARM ATTACHMENT DATA					
		BASE DIA. (IN)	TOP DIA. (IN)	GAUGE OR THK. (IN)	LENGTH (FT)	ANCHOR BOLT QTY.	"A" (IN)	"B" (IN)	"J" (IN)	"C" (IN)	"D" (IN)	"H" (IN)
25	20	13.00	9.92	0.313	22.00	4	17.75	14.50	7.25	1.50	0.250	1.00
	25											
30	25	13.50	10.42	0.313	22.00	4	18.25	15.00	7.50	1.50	0.250	1.00
35	20	14.50	11.42	0.313	22.00	4	19.25	16.00	8.00	1.75	0.250	1.00
	25											
40	25	15.50	12.42	0.313	22.00	4	20.75	17.50	8.75	1.75	0.250	1.00
	30											
	35											
45	25	16.50	13.42	0.313	22.00	4	21.75	18.50	9.25	1.75	0.313	1.25
	30											
	35											
	40											
50	35	17.00	13.92	0.375	22.00	6	22.25	19.00	9.50	2.00	0.313	1.25
	40											
55	40	18.00	14.92	0.375	22.00	6	23.75	20.00	10.00	2.00	0.313	1.25
	45											

LA-SM-45'-180°-N/A-N/A-15'



DESIGNATION EXAMPLE

MATERIAL DATA

COMPONENT	ASTM DESIGNATION	MIN. YIELD (KSI)	COMPONENT	ASTM DESIGNATION	MIN. YIELD (KSI)
TAPERED TUBES	A595 GR. A OR A572	55	ANCHOR BOLTS	F1554 GR.55	55
			GALVANIZING	A123	
			GALVANIZING-HARDWARE	HOT DIP ZINC	
BASE PLATE	A36	36			
ARM ATTACHMENT PLATES	A36	36			
SIGNAL ARM CONN. BOLT	A325				



11-14-13

TITLE STATE OF LOUISIANA TRAFFIC SIGNAL STRUCTURES

VALMONT INDUSTRIES, INC. RESERVES THE RIGHT TO INSTALL VARIOUS, ENGINEER APPROVED, MATERIAL HANGING ACCOMMODATIONS TO FACILITATE THE MANUFACTURING PROCESS.

valmont
Valley, NE 68064
(402) 359-2201

PAGE NUMBER: 3 OF 3
DRAWING NUMBER DB01032
REV