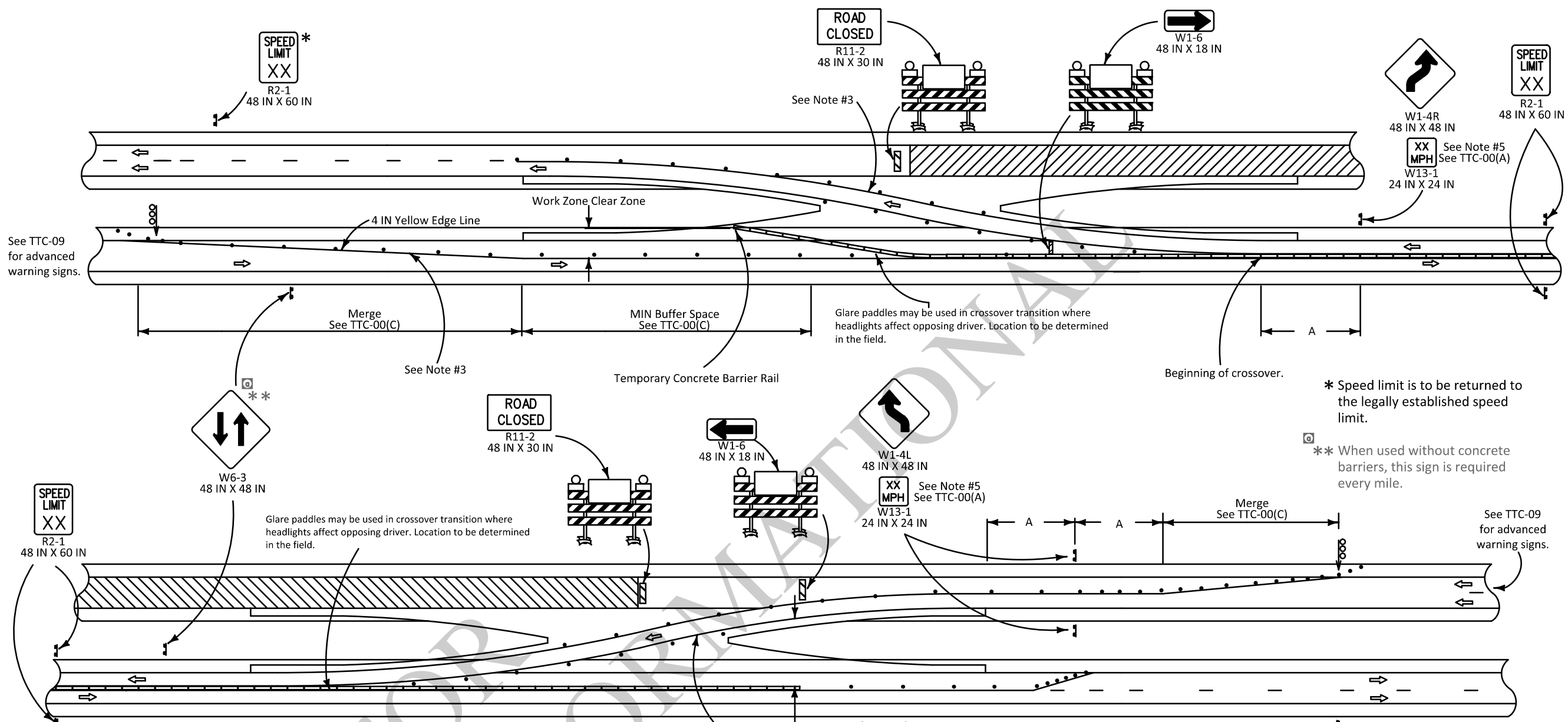


SHEET NUMBER	
DESIGN	G. Dunn
CHECK	B. Boucher
DETAIL	G. Dunn
CHECK	B. Boucher
REVIEW	
SERIES	
APPROVED BY CHIEF ENGINEER	
DATE	3/11/2026
BY	
REVISION OR CHANGE DESCRIPTION	
NO.	
DATE	6-12-25



TEMPORARY TRAFFIC CONTROL
 FOR MEDIAN CROSSOVER
 ON DIVIDED HIGHWAYS
 TTC-08
 STANDARD PLAN



NOTES

This sheet shall be used with Temporary Traffic Control General Notes Sheets TTC-00(A), TTC-00(B), TTC-00(C), TTC-00(D), and other Temporary Traffic Control Sheets as appropriate.

- 1) This layout represents the minimum traffic controls required for median crossovers on divided highways. For advance signing see TTC-00(D) and TTC-09.
- 2) For posted speed limits prior to construction that are greater than 45 mph, concrete barriers shall be required to separate the lanes of travel. For posted speed limits prior to construction that are 45 mph or less, concrete barriers may be substituted by tubular markers or flexposts.
- 3) Temporary raised pavement markers spaced at 15 FT C/C shall be used to supplement the white and yellow temporary edge lines through the reverse curves of the crossover. All temporary edge lines between the barrier rail and the beginning of the lane reduction taper shall have temporary raised pavement markers spaced at 15 FT C/C.
- 4) When traffic control is planned to be in place for more than 3 days, conflicting pavement markings shall be removed and temporary markings added.
- 5) "Advisory Speed Plaques" (W13-1) shall be required if the difference between the speed limit prior to construction and the advisory speed (determined by an engineering study performed by the DTOE) is 10 mph or greater.

SPEED LIMIT (prior to construction)	Spacing
25 mph	63 FT
30 mph	90 FT
35 mph	123 FT
40 mph	160 FT
45 mph	270 FT
50 mph	300 FT
55 mph	330 FT

ALL TTC STANDARDS SHOW MINIMUM CONSTRUCTION SIGNING.
 ALL SITUATIONS SHALL BE REVIEWED AND/OR DESIGNED BY THE ENGINEER.
 CONTRACTORS ARE RESPONSIBLE FOR COMPLYING WITH ALL TTC STANDARDS.

LEGEND

- Traffic Sign
- Channelizing Devices
- Type III Barricades
- Flashing Arrow Board (Type 'C')
- Work Area
- Temporary Concrete Barrier
- Type B Light
- Direction of Travel

* Speed limit is to be returned to the legally established speed limit.
 ** When used without concrete barriers, this sign is required every mile.