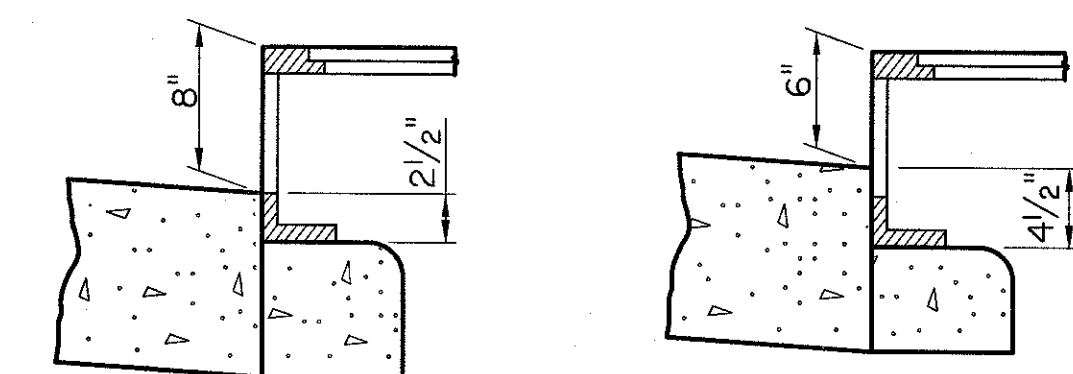
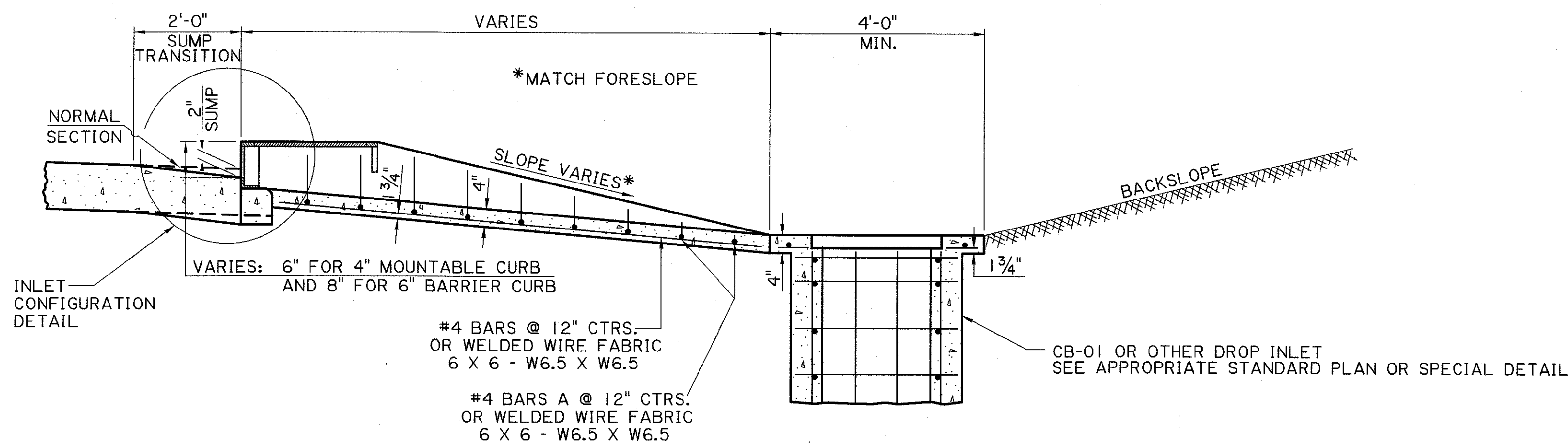
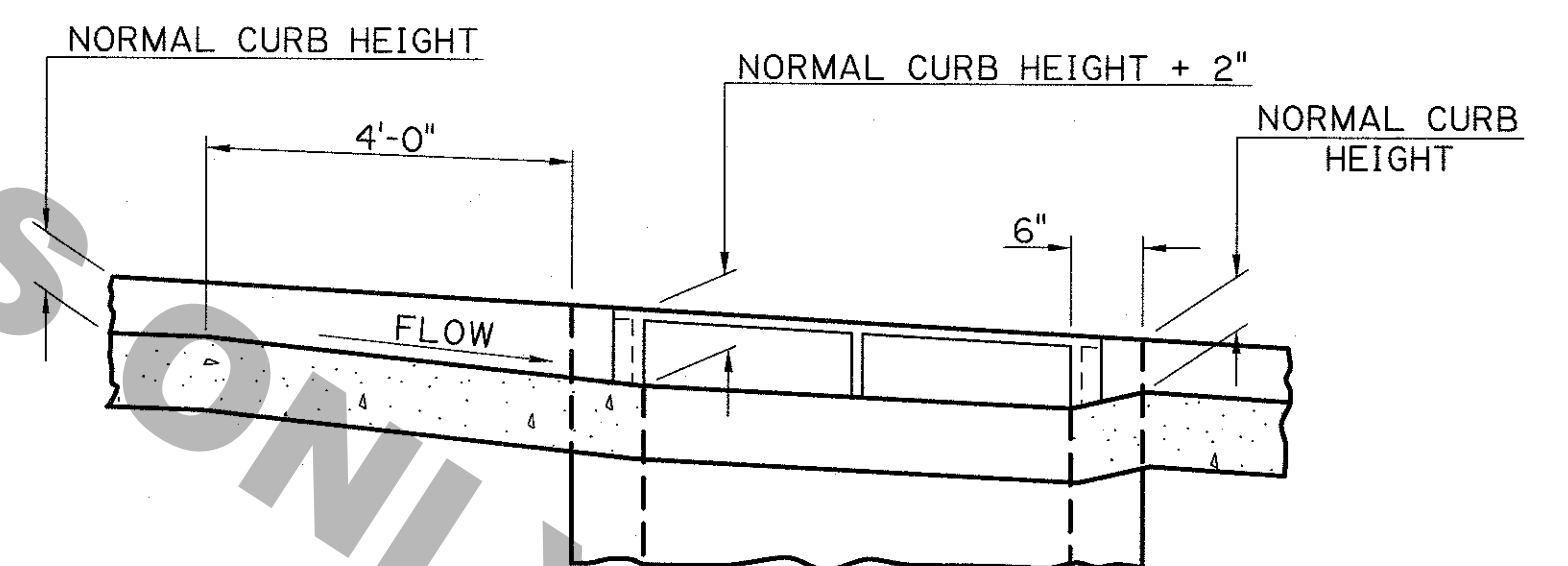
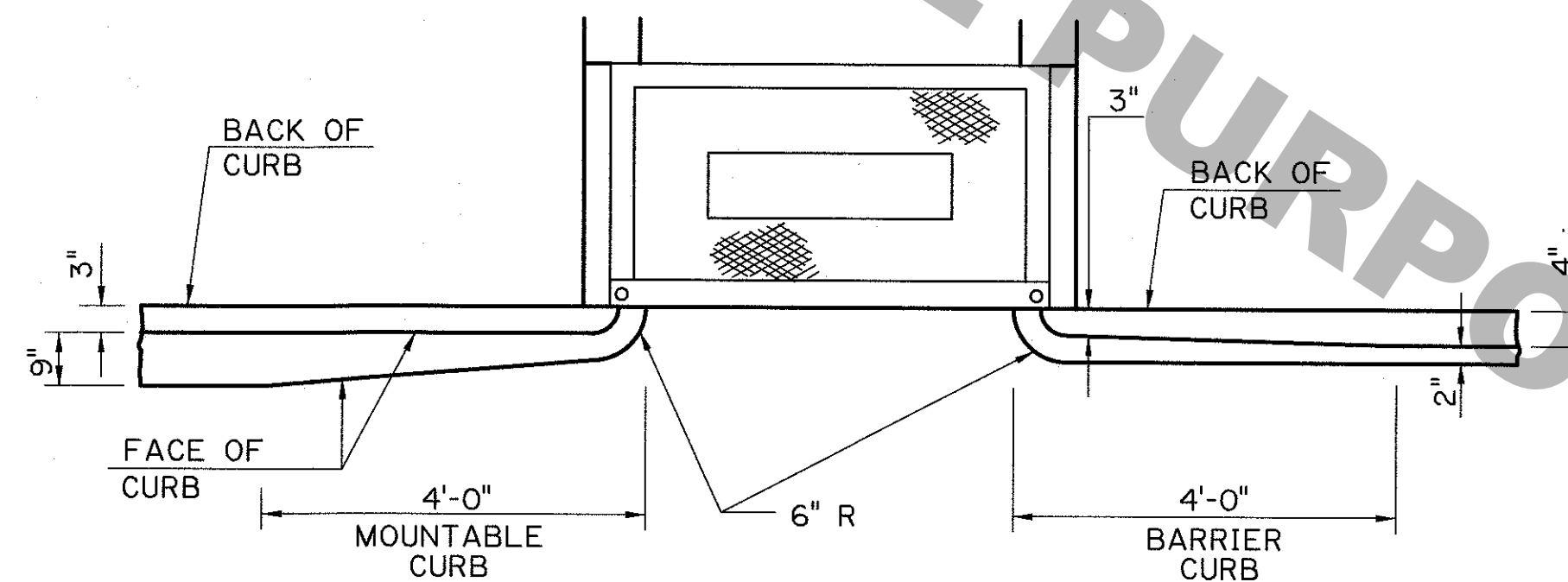
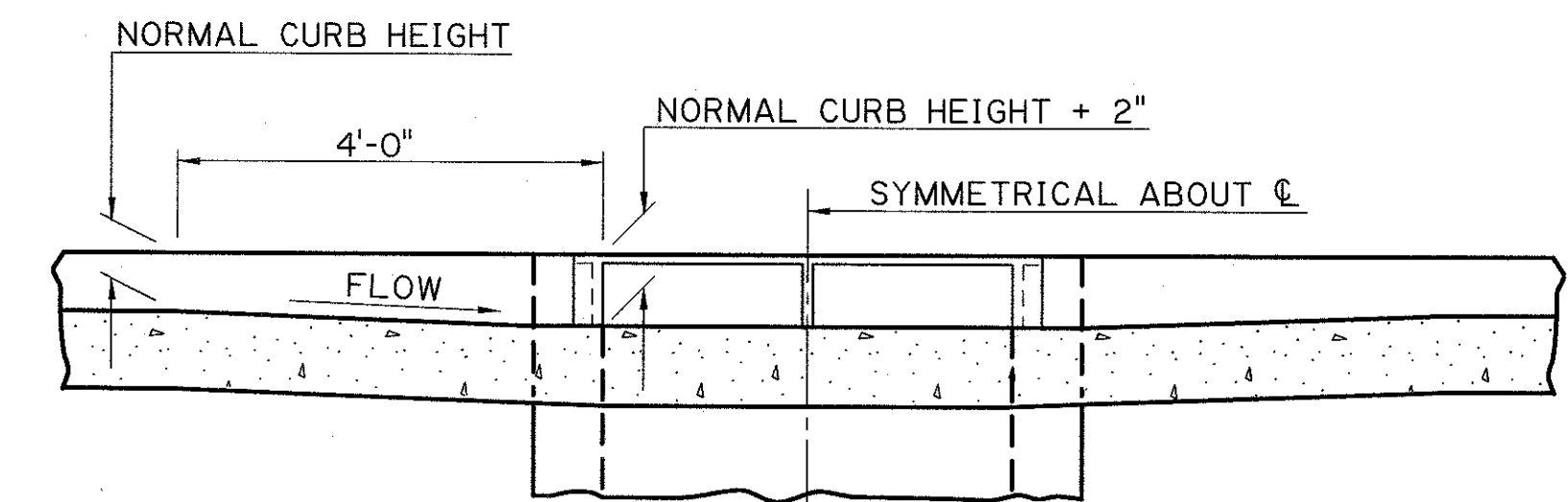
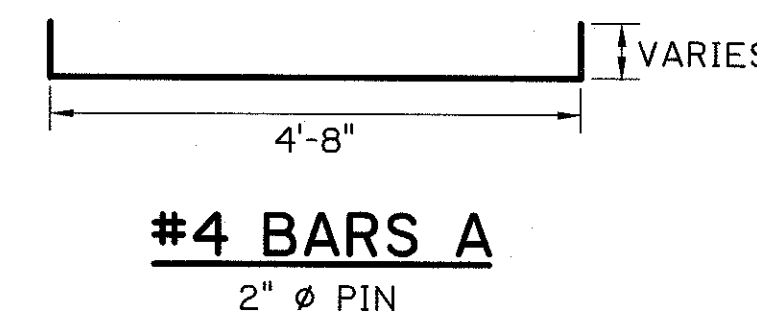
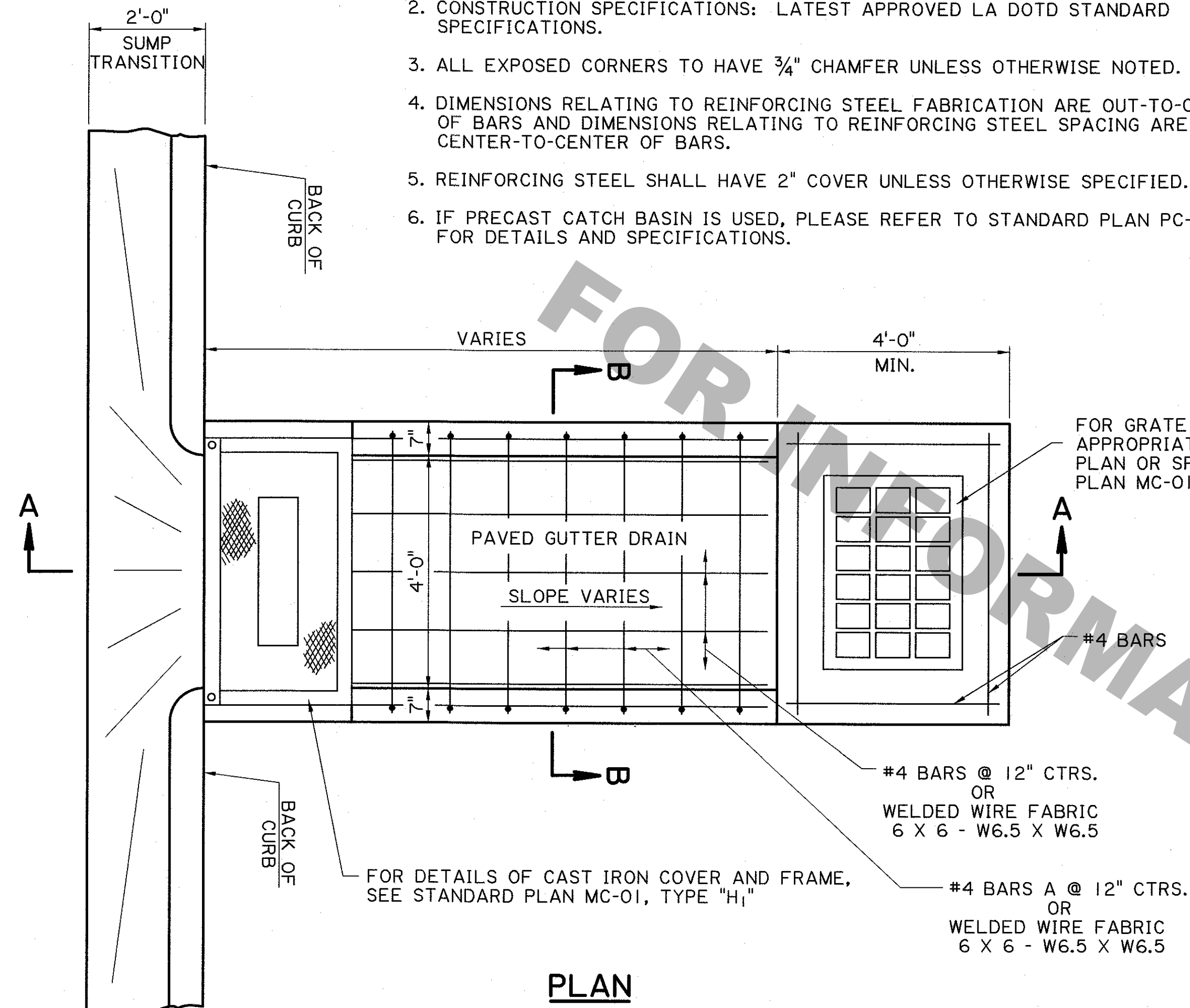
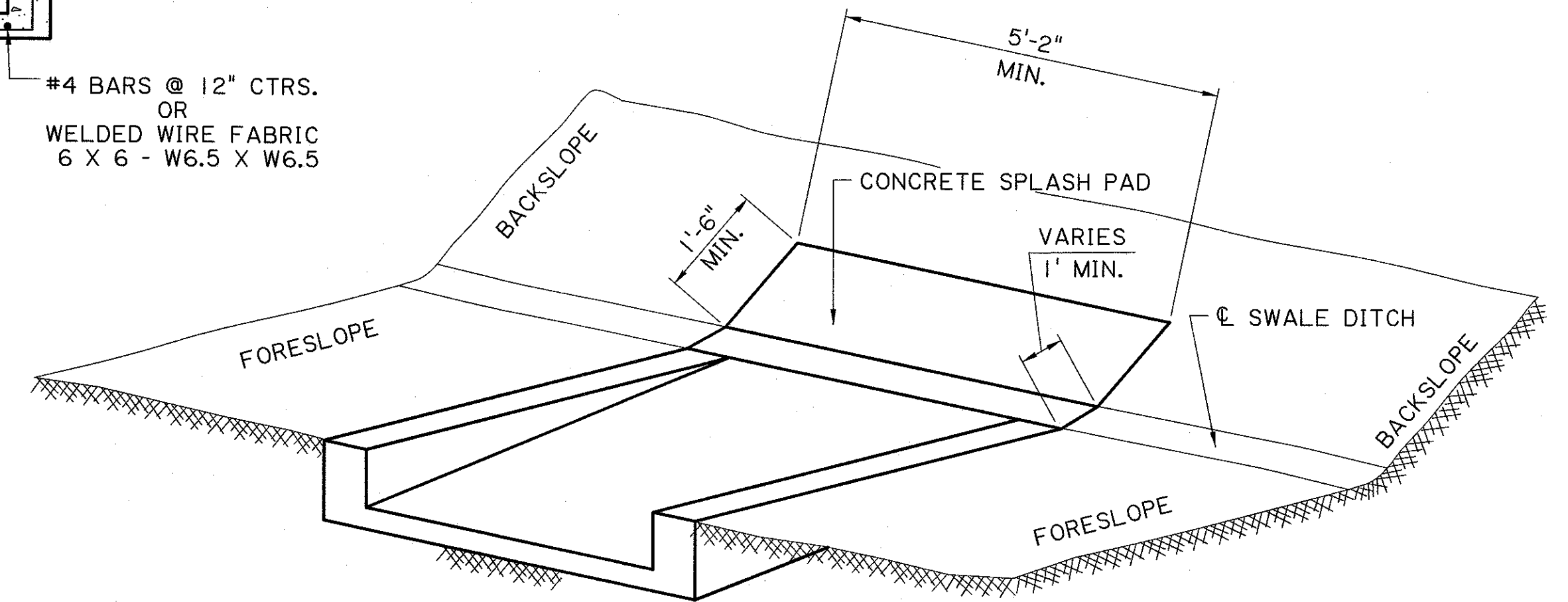
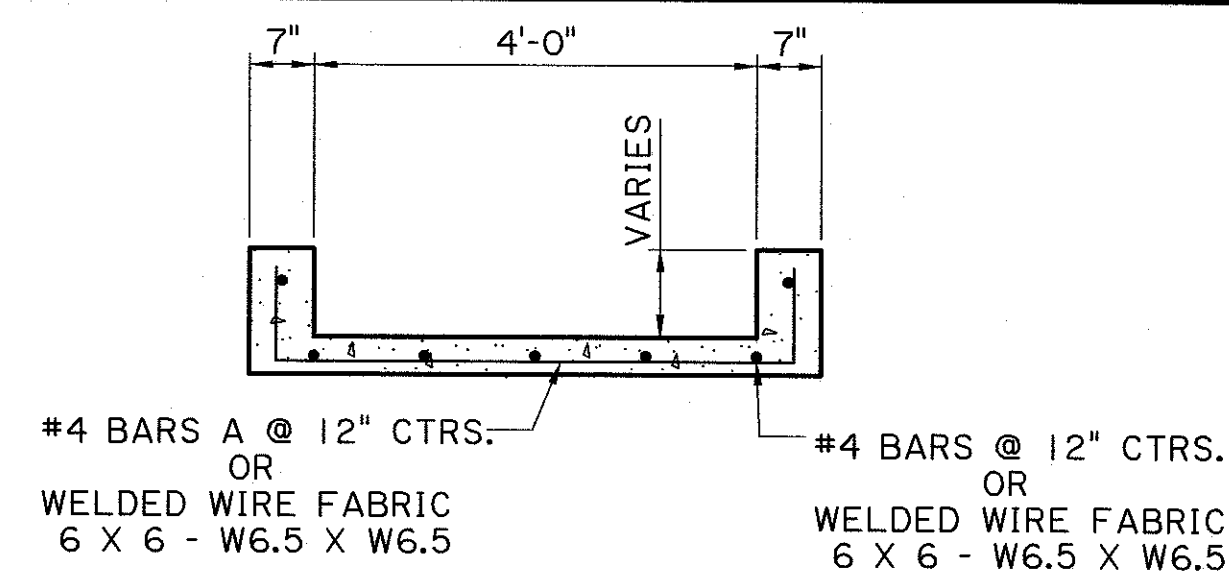


# GENERAL NOTES:

1. THIS STRUCTURE MEETS ALL DOTD HYDRAULIC PERFORMANCE CRITERIA WHEN USED IN ACCORDANCE WITH THE DOTD HYDRAULICS MANUAL AND ALL DOTD HYDRAULIC DESIGN POLICIES.
2. CONSTRUCTION SPECIFICATIONS: LATEST APPROVED LA DOTD STANDARD SPECIFICATIONS.
3. ALL EXPOSED CORNERS TO HAVE  $\frac{3}{4}$ " CHAMFER UNLESS OTHERWISE NOTED.
4. DIMENSIONS RELATING TO REINFORCING STEEL FABRICATION ARE OUT-TO-OUT OF BARS AND DIMENSIONS RELATING TO REINFORCING STEEL SPACING ARE CENTER-TO-CENTER OF BARS.
5. REINFORCING STEEL SHALL HAVE 2" COVER UNLESS OTHERWISE SPECIFIED.
6. IF PRECAST CATCH BASIN IS USED, PLEASE REFER TO STANDARD PLAN PC-01 FOR DETAILS AND SPECIFICATIONS.



WHEN USED WITH 6" BARRIER CURB  
WHEN USED WITH 4" MOUNTABLE CURB

SHEET NUMBER		PARISH		CONTROL SECTION		STATE PROJECT	
DESIGN	CHECK	DETAIL	CHECK	REVIEW	SERIES #		
<p>STATE OF LOUISIANA MITRA HASHEMIEH REG. No. 28546 REGISTERED PROFESSIONAL ENGINEER CIVIL ENGINEERING 9/11/2020</p> <p>STATE OF LOUISIANA ADAM LANCASTER REG. No. 35573 REGISTERED PROFESSIONAL ENGINEER CIVIL ENGINEERING 9/10/20</p>							
STRUCTURAL							
<p>APPROVED BY CHIEF ENGINEER: <i>Christy P. Hoyle</i> DATE: 9/22/2020</p>							
<p>STATE OF LOUISIANA SINGLE PAVED GUTTER DRAIN PG-DRAIN (SINGLE) STANDARD PLAN</p>							
<p>DOTD LOUISIANA DEPARTMENT OF TRANSPORTATION &amp; DEVELOPMENT HYDRAULICS SECTION</p>							