




Office of Engineering
Project Development Division
Section 25 Bridge and Structural Design
PO Box 94245 | Baton Rouge, LA 70804-9245
Phone: 225-379-1302

Bobby Jindal, Governor
Sherri H. LeBas, P.E., Secretary

MEMORANDUM

TO: ALL CONSULTANTS
ALL BRIDGE DESIGNERS

FROM: PAUL FOSSIER, P.E. 
BRIDGE DESIGN ENGINEER ADMINISTRATOR

SUBJECT: BRIDGE DESIGN TECHNICAL MEMORANDUM NO. 38 (BDTM.38)
PUBLICATION OF EDSM I.1.1.28 - PROCEDURES FOR FINAL PLAN MODIFICATIONS
INCLUDING PLAN REVISIONS AND CHANGE ORDERS

DATE: MARCH 25, 2013

Effective immediately, the subject EDSM I.1.1.28, "Procedures for Final Plan Modifications Including Plan Revisions and Change Orders", shall be implemented. The "Procedures for Revisions and Plan Changes" as provided on pages 3(22) through 3(25) of the LA DOTD Bridge Design Manual (Fourth English Edition) shall be deleted.

Please note that upon full implementation of electronic plans publishing by LA DOTD, the referenced EDSM may be revised or an additional EDSM may be published.

This technical memorandum is posted on the Bridge Design Website under Technical Memoranda.
http://www.dotd.la.gov/highways/project_devel/design/home.asp?ID=BRIDGE

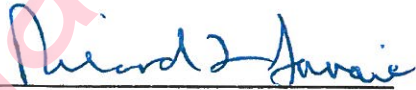
Please contact Ms. Zhengzheng "Jenny" Fu (225-379-1321, zhengzheng.fu@la.gov) if you have questions or comments.

PF/zzf/pv

Cc: Richard Savoie (Chief Engineer)
Janice Williams (Chief, Project Development Division)
Michael Vosburg (Chief Construction Division Engineer)
Edward Wedge (Project Management Director)
Chad Winchester (Road Design Engineer Administrator)
Stephen Meunier (Pavement and Geotechnical Engineer Administrator)
Art Aguirre (FHWA)
District Administrators (02, 03, 04, 05, 07, 08, 58, 61, 62)

LA DOTD Procedures for Final Plan Modifications
Including Plan Revisions and Change Orders

Approved by



LA DOTD Chief Engineer

3.4.13

Date

Table of Contents

Section 1: Final Plan Modification Procedures

- 1.1 Final Plans
- 1.2 Plan Revisions
- 1.3 Change Orders

Section 2: Sheet Modification Procedures

- 2.1 Modifications Made by the Original Engineer of Record
- 2.2 Modifications Made by an Engineer Other than the Original Engineer of Record

Section 3: Sheet Numbering Procedures

Section 4: Revision and Change Order Descriptions and Bugs

Section 5: Standard Forms and Examples

- 5.1 Request for Plan Revision/Change Order Sheets from General Files
- 5.2 Transmittal of Plan Revision Sheets for Review to Contracts and Specifications
- 5.3 Transmittal of Plan Revision/Change Order Sheets to General Files
- 5.4 Final Plan/Plan Revision Distribution Order
- 5.5 Transmittal of Change Order Sheets to Construction
- 5.6 Plan Revision and Change Order Examples

Inactive

Section 1

Final Plan Modification Procedures

1.1 Final Plans

Prior to final stamp and signature by the engineer of record (until 98% Final Plan Status):

Modifications should be made to the plan sheets as needed. If the plan sheets have been submitted to Contracts and Specifications for development of the construction proposal, any changes must be clearly communicated to the developer of the proposal.

After final stamp and signature by the engineer of record (until 100% Final Plan Status):

Modifications should be made to the plan sheets as needed in accordance with Section 2, *Sheet Modification Procedures*. If additional plan sheets are required, see Section 3, *Sheet Numbering Procedures*. If the plan sheets have been submitted to Contracts and Specifications for development of the construction proposal, any changes must be clearly communicated to the developer of the proposal.

1.2 Plan Revisions

After signature of the title sheet by the Chief Engineer (until Project Letting):

At this point, the final plans shall be transmitted to General Files by project managers using the *Final Plan/Plan Revision Distribution Order Form* included in Section 5.4. Modifications made to the plans hereafter are considered plan revisions. The following steps shall apply:

1. A written request for the affected plan sheets and the title sheet must be submitted to General Files. The request should specify the purpose of the intended revision, the anticipated amount of time required to complete the revision, and the name of the person in charge of the revision. The person in charge of the revision shall be the Project Manager or his delegate. Task Managers shall communicate with Project Managers when a need for plan revision arises prior to proceeding with the plan revision. The Contracts and Specifications Engineer must approve (sign off on) the written request prior to its submission to General Files. See Section 5.1 for a *Request for Plan Revision/Change Order Sheets from General Files* form. If practical, the entire plan set should be removed from General Files to prevent accidental reproduction, distribution, publishing, etc. of a partial plan set.
2. The required modifications shall be made to all sheets. There are several different processes by which the sheets may be modified. See Section 2, *Sheet Modification Procedures*, for additional information. If additional plan sheets are required or if existing sheets are removed but not replaced, see Section 3, *Sheet Numbering Procedures*.
3. When modifications on a plan sheet affect information provided on other plan sheets, the plan sheets with the affected information must also be modified to reflect the updated information.

4. Each revision that is initiated shall have a unique, sequentially assigned revision number that is used to note all plan modifications associated with the revision. Revision numbers shall be tracked by the Project Manager. Task Managers should obtain the revision number from the Project Manager prior to proceeding with the plan revision. To differentiate the revision number from other numbers on the plan sheets, a bug (☐) has been devised (the corresponding revision number shall be shown inside). This bug, including the revision number, shall be placed on each revised plan sheet next to all revised items and in the "Revision or Change Order Description" block. A description of the revisions, initials of the engineer who is responsible for the revisions, and the date the revisions were made shall be placed in the "Revision or Change Order Description" block adjacent to the revision bug and number. See Section 4, *Revision and Change Order Descriptions and Bugs*, for additional information. All sheets involved in the revision must have the same revision number and should have the same date.
5. The revision bug, including the revision number, shall be placed next to a line in the "Schedule of Revisions" block on the original title sheet. That line shall be filled out with a list of sheet numbers of all sheets that have been revised as part of this revision, and the revision date. The title sheet number, 1, shall be included in the list of revised sheets, but it is not necessary to fill out the "Revision or Change Order Description" block on the title sheet unless a change, other than completing the "Schedule of Revisions" block, has been made to the title sheet.
6. Task managers shall provide all revised plans when complete to the Project Manager or his delegate. The revised plans must then be sent to Contracts and Specifications with a transmittal letter specifying which sheets were revised, what modifications were made, any quantity changes, any other information that may affect the language used in the construction proposal, and, if necessary, a revised construction cost estimate. After their review and use, Contracts and Specifications will return the revised sheets to the person in charge of the revision. See Section 5.2 for a *Transmittal of Plan Revision Sheets for Review to Contracts and Specifications* form.
7. Approval of the revision must then be obtained from the Section Head and the Chief Engineer, who indicate approval by initialing and dating the "Schedule of Revisions" block on the title sheet. The Section Head's initials should appear in the recommended column and the Chief Engineer's initials should appear in the approved column. The dates of the Section Head and Chief Engineer's initials do not need to match the revision date or each other.
8. The revised sheets, the original title sheet, and any other plan sheets that were removed from General Files but not modified, must be sent back to General Files along with a transmittal letter (see Section 5.3 for a *Transmittal of Plan Revision/Change Order Sheets to General Files* form) and distribution order (see Section 5.4 for a *Final Plan/Plan Revision Distribution Order* form). Original sheets that were removed from General Files and replaced with revised sheets may be discarded.
9. All plan revisions must be completed (returned to General Files as described in Step 8) no later than 12:00 noon, five working days prior to the scheduled letting date.
10. General Files will stamp the title sheet of the distribution copies "Revised Plans" and will distribute them in accordance with the distribution order; the original title sheet is not stamped "Revised Plans".

1.3 Change Orders:

After Project Letting:

Modifications made to the plans hereafter are considered change orders. The following steps shall apply:

1. A written request for the affected plan sheets and the title sheet must be submitted to General Files by the person in charge of the change order. The person in charge of the change order shall be the Project Manager or his delegate. Task Managers shall communicate with Project Managers when a need for change order arises prior to proceeding with the change order. See Section 5.1 for a *Request for Plan Revision/Change Order Sheets from General Files* form. If practical, the entire plan set should be removed from General Files to prevent accidental reproduction, distribution, publishing, etc. of a partial plan set.
2. The required modifications shall be made to all sheets. There are several different processes by which the sheets may be modified. See Section 2, *Sheet Modification Procedures*, for additional information. If additional plan sheets are required, see Section 3, *Sheet Numbering Procedures*. Original sheets replaced by change order sheets shall not be modified, except that they shall be stamped "VOID". If the modification requires that plan sheets be removed but not be replaced, the original sheets are stamped "VOID"; no other modifications in conjunction with the removal of the original sheets are required. The person in charge of the change order for the affected sheets shall initial and date the "VOID" stamp. The voided sheets shall remain in the plan set.
3. When modifications on a plan sheet affect information provided on other plan sheets, the plan sheets with the affected information must also be modified to reflect updated information. Exceptions to this requirement are that the "Index of Sheets" on the title sheet should not be modified to reflect the insertion or deletion of sheets, and the summary of quantities sheets should not be modified to reflect any quantity changes. The Project Engineer will redline those changes on the as-built plan set after the project is completed.
4. Each change order sheet shall have a change order (capitol) letter used to note all plan modifications associated with that individual plan sheet. To differentiate the change order letter from other letters on the plan sheets, a bug (Δ) has been devised (the corresponding change order letter shall be shown inside). This bug, including the change order letter, shall be placed on each change order sheet next to all changed items and in the "Revision or Change Order Description" block. A description of the changes, initials of the engineer who is responsible for the changes, and the date the changes were made shall be placed in the "Revision or Change Order Description" block adjacent to the change order bug and letter. See Section 4, *Revision and Change Order Descriptions and Bugs*, for additional information. All sheets involved in the change order should have the same change order date, but the change order letters used are specific to each sheet and shall correspond to the number of times the sheet has been changed. For example, for the first change order modification to a sheet, the change order letter would be "A". If it becomes necessary to revise that sheet in a subsequent change order, then successive change order letters "B", "C", etc. would be used. The change order letter shall also be added to the end of the sheet number in the sheet's title block. For

example, if plan sheet 4 were modified by change order, its replacement would be plan sheet 4A. The original plan sheet 4 shall now be stamped "Void" and initialed and dated. This voided sheet shall remain in the plan set. Note that only capital letters are used as change order letters. Each change order sheet shall be stamped "Change Order and/or Special Agreement".

5. The "Schedule of Revisions" block on the title sheet should not be modified to indicate which sheets were affected by the change order. No changes should be made to the title sheet unless the change order seeks to modify the title sheet specifically.
6. Ten half-size (11x17) and four full-size (22x34) copies of the change order sheets, the original title sheet, and all voided sheets, must be sent to Construction, along with a transmittal letter, for distribution. This task is typically processed by the task managers; however, the project manager shall be copied on the transmittal letter. The transmittal letter shall specify what modifications were made, any quantity changes, and why the change order was initiated (design error, contractor error, change in field conditions, etc.). If the change order resulted from a construction error, any engineering costs associated with the redesign and plan modifications that were incurred by LADOTD shall be included in the letter. Because change orders are processed by the Project Engineer, the change order number in which the modified plans will be included is not known at this time. Therefore, the change order transmittal letter will be devoid of any naming or numbering sequence and will be uniquely identifiable only by its date. See Section 5.5 for a *Transmittal of Change Order Sheets to Construction* form.
7. The change ordered sheets, the original title sheet, all voided sheets, and any other plan sheets that were removed from General Files but not modified, must be sent back to General Files along with a transmittal letter. No sheets shall be discarded. See Section 5.3 for a *Transmittal of Plan Revision/Change Order Sheets to General Files* form.

Section 2

Sheet Modification Procedures

The sealing (stamping) and signing of plan sheets is governed by the Laws and Rules of the Louisiana Professional Engineering and Land Surveying (LAPELS) board. In no way do these procedures excuse practice or conduct that is contrary to the Laws and Rules of the LAPELS board.

After the engineer of record stamps, signs, and dates the sheet, any modifications made to the sheet, excluding modifications made to the information contained in the title block and, in the case of a plan revision, the "Schedule of Revisions" block, must be approved by the engineer of record. If an engineer other than the engineer of record approves modifications to the sheet, that engineer must also stamp the sheet, note what modifications were made, and become the engineer of record for those modifications. Furthermore, in cases where the modification could adversely affect the performance of plan elements not directly involved in the modification, the engineer approving the modifications must note that information on the sheet and become the engineer of record for those elements as well.

Upon completion, all original and modified sheets shall be stored electronically in ProjectWise in accordance with the Section's ProjectWise document control procedures as a dgn file, pdf file, or both (as applicable). Consultants shall provide these files to the LADOTD Task or Project Manager for inclusion into ProjectWise.

The methods presented in the following subsections are listed in their order of preference. Subsequent methods should only be used when former methods are impractical, discouraged, or prohibited.

2.1 Modifications Made by the Original Engineer of Record

Method No. 1 - Electronic Vector Method:

Prior to 100% FP:	Allowed
Plan Revisions:	Allowed (prohibited for the Title Sheet only*)
Change Orders:	Allowed (prohibited for the Title Sheet only*)

1. Make a copy of the original CAD drawing (vector file).
2. Make all needed modifications to the copied vector file. These modifications shall be made in accordance with Section 1, *Final Plan Modification Procedures*.
3. Once completed, the new sheet shall be plotted, stamped, signed, and dated (with the current date) by the engineer of record.

* Prohibited for the title sheet because approval signatures would be lost

Method No. 2 - Hand Method:

Prior to 100% FP: Allowed
Plan Revisions: Allowed
Change Orders: Prohibited**

1. Make all needed modifications to the original plan sheet (hardcopy) by hand using technical pens (Leroy). These modifications shall be made in accordance with Section 1, *Final Plan Modification Procedures*. Due to the effort required to make modifications by hand, this method should only be used when there are minor modifications.
2. Once completed, the original stamp, signature, and date shall remain on the sheet.

** Prohibited for change orders because original sheets must be voided when change ordered

Method No. 3 - Electronic Raster Method:

Prior to 100% FP: Allowed for the Title Sheet only
Plan Revisions: Allowed for the Title Sheet only
Change Orders: Allowed for the Title Sheet only

1. Scan the original title sheet into a suitable file format (TIF) and bring the scanned image into CAD (raster) file.
2. Make all needed modifications to the raster file using a combination of raster and vector tools. These modifications shall be made in accordance with Section 1, *Final Plan Modification Procedures*.
3. Once completed, the title sheet shall be plotted. The original stamp, signature, and date shall remain on the sheet.

2.2 Modifications Made by an Engineer Other than the Original Engineer of Record

It is undesirable to have an engineer other than the original engineer of record make modifications to a plan sheet. Because it creates complexity in the modification process and presents an opportunity for design conflicts and errors, it should be avoided if possible.

Method No. 1 - Electronic Raster Method:

Prior to 100% FP: Allowed (discouraged for the Title Sheet only)
Plan Revisions: Allowed (discouraged for the Title Sheet only)
Change Orders: Allowed

1. Scan the original plan sheet into a suitable file format (TIF) and bring the scanned image into CAD (raster) file.
2. Make all needed modifications to the raster file using a combination of raster and vector tools. These modifications shall be made in accordance with Section 1, *Final Plan Modification Procedures*. A note shall be added indicating for what modifications the second engineer is responsible.
3. Once completed, the sheet shall be plotted, stamped, signed, and dated (with the current date) by the engineer making the modifications. The original stamp, signature, and date shall remain on the sheet.

Method No. 2 - Hand Method:

Prior to 100% FP: Allowed (preferred for the Title Sheet only)
Plan Revisions: Allowed (preferred for the Title Sheet only)
Change Orders: Prohibited**

1. Make all needed modifications to the original plan sheet (hardcopy) by hand using technical pens (Leroy). These modifications shall be made in accordance with Section 1, *Final Plan Modification Procedures*. Due to the effort required to make modifications by hand, this method should only be used when there are minor modifications. A note shall be added indicating for what modifications the second engineer is responsible.
2. Once completed, the sheet shall be stamped, signed, and dated (with the current date) by the engineer making the modifications. The original stamp, signature, and date shall remain on the sheet.

** Prohibited for change orders because original sheets must be voided when change ordered

Section 3

Sheet Numbering Procedures

The following procedures shall be followed when numbering plan sheets:

1. Sheet numbers should be assigned sequentially using whole numbers, with the title sheet being assigned the number one. Logical breaks in sequence may be made for plan development simplicity. For example, bridge sheets may begin at sheet 101 even though the road sheets end at sheet 35.
2. Prior to letting, the use of inserted sheets should be avoided if possible; however, an exception is made for the "Typical Section and Details" and "Summary of Quantities" sheets in the roadway plans. These sheets historically use inserted sheet numbers for plan organization purposes even though sequential sheet numbers are available at the time of their development.
3. When new sheets are needed between sequentially numbered sheets, an alternating sequence of lowercase letters and numbers shall be added to the end of the preceding sheet number, with the next level of letters or numbers being introduced when it is not possible to assign a sequential sheet number. For example, if three sheets are needed between sheets 101 and 102, those sheets should be numbered 101a, 101b, and 101c. Furthermore, if two new sheets were subsequently needed between sheets 101b and 101c, those sheets should be numbered 101b1 and 101b2. The alternating sequence of lowercase letters and numbers continues indefinitely as needed.
4. If more than 26 letters are needed for a sequence, z shall be followed by aa, ab, ac, ..., az, ba, bb, etc. Note that only lowercase letters are used in the sheet numbering sequence.
5. If a new sheet is introduced into the plan set prior to signature by the Chief Engineer, it may be inserted following the previously described convention. However, if practical, all sheets should be renumbered to accommodate the new sheet such that the new sheet appears to be part of the original plan set.
6. If sheets are removed from the plan set prior to letting, such that there are non-logical breaks in sequence (for example ...6, 7, 9, 10...), the breaks in sequence shall be noted as "not used" in the "Index to Sheets" on the title sheet. However, if sheets are removed prior to signature by the Chief Engineer and if practical, all sheets should be renumbered such that there are only logical breaks in sequence.
7. These sheet numbering procedures are applicable for change orders. See Section 1.3, *Change Orders*, for additional information including how to incorporate the change order letter into the sheet number and for procedures governing sheet removal after letting.

Section 4

Revision and Change Order Descriptions and Bugs

The following guidance should be followed when utilizing revision and change order descriptions and bugs:

1. For older plan sheets that have "Revision Description" written in the title block, the person in charge of the revision or change order should modify it to "Revision or Change Order Description".
2. A description of the modifications made must be provided in the "Revision or Change Order Description" block. The description should be indicative of the modifications made. If the space provided in the "Revision or Change Order Description" block is insufficient to adequately describe the modifications made, a bugged text block containing the modification descriptions should be added to the sheet. The description provided in the "Revision or Change Order Description" block should refer anyone reviewing the plans to the aforementioned text block. If there are not enough rows in the "Revision or Change Order Description" block, the space directly above the "Revision or Change Order Description" block should be utilized and the same format as described above should be followed.
3. Bugs should be provided on the plan sheet adjacent to all modifications made on the plan sheet. If the modifications made significantly affect an entire detail, it may be appropriate to bug the detail title instead of attempting to bug each individual modification made in the detail.
4. On plan sheets that are crowded with information, it may be difficult to locate the bugs on the sheet and modified information may be overlooked. In this case, when in conjunction with a change order only, and at the discretion of the engineer, clouding may be used to indicate the location of the modifications. Bugs must still be provided in conjunction with clouding. Additionally, if clouding is used on a sheet, it must be used for all modifications on the sheet.
5. If modifications are of such significance that the entire sheet must be completely redrawn, bugs need not be provided on the sheet (though they are still required in the "Revision or Change Order Description" block). A description of the modifications must still be provided in accordance with item 2 above. Completely redrawing the sheet should be done only when necessary and should not be done for expediency.
6. If a new sheet is introduced into the plans through a plan revision or change order, the description of the modifications provided in the "Revision or Change Order Description" block shall be listed as "New Sheet". Because the description "New Sheet" is used to alert anyone reviewing the plans that there is not a previous version of the sheet, it shall not be used in any other situation.
7. Descriptions and bugs from prior plan revisions or change orders should be retained on subsequent versions of the plan sheet to the extent that it is practical. Clouding from previous change orders should be removed (though the bugs associated with the clouds should remain). Previous descriptions and bugs may be deleted if modifications to the sheet necessitate their removal.

Section 5

Standard Forms and Examples

The following standard forms and examples have been provided to illustrate the proper adherence to the previously described procedures. The examples follow a sample project through two plan revisions and three change orders. Electronic copies of the forms may be downloaded from LADOTD Bridge Design Section Website.

5.1 Request for Plan Revision/Change Order Sheets from General Files

This standard form is used to request original plan sheets from General Files. In the case of a plan revision, the Contracts and Specifications Engineer must sign this form prior to its transmittal to General Files. See page 13.

5.2 Transmittal of Plan Revision Sheets for Review to Contracts and Specifications

This standard form is used to transmit revised plan sheets to Contracts and Specifications for their review and use in modifying the construction proposal accordingly. It should be signed and returned by Contracts and Specifications when the plan sheets are returned to the requester. See page 14.

5.3 Transmittal of Plan Revision/Change Order Sheets to General Files

This standard form is used to transmit modified plan sheets back to General Files for storage and/or distribution. It should be signed by General Files upon receipt. See page 15.

5.4 Final Plan/Plan Revision Distribution Order

This standard form is used to provide General Files with a list of individuals to whom copies of the final plans or plan revision sheets must be sent. See page 16.

5.5 Transmittal of Change Order Sheets to Construction

This standard form is used to transmit copies of change order sheets to Construction for distribution. The reasons for the change order should be noted as appropriate. See page 17.

5.6 Plan Revision and Change Order Examples

See pages 18 to 22.

Request for Plan Revision/Change Order Sheets from General Files

Date

Project Number:

Project Name:

To: General Files

Requested by:

Name

Section

Approved by:
(Only Required
For Plan
Revision)

Contracts & Specifications
Engineer Name

Signature

Date

Plan Revision

Change Order

Purpose of Plan Revision/Change Order:

Anticipated Completion Date:

Requested Sheets:

Total Number of Requested Sheets:

Transmittal of Plan Revision Sheets for Review to Contracts and Specifications

Date

Project Number:

Project Name:

To: Contracts & Specifications

From:

Name

Section

Plan Revision Sheets: (include a description of the revisions made to each sheet):

Quantity Changes (attach marked up web Transport cost estimate if necessary):

Other Information that may
Affect Construction Proposal:

Returned Plan Revision
Sheets to Requester by:

Name

Date

Transmittal of Plan Revision/Change Order Sheets to General Files

[]

Date

Project Number: []

Project Name: []

To: General Files

From: [] []
Name Section

Plan Revision

Change Order

Plan Revision/Change Order Sheets (include title sheet):

[]

Sheets Returned but not Modified:

[]

Voided Sheets:

[]

Total Number of Sheets Returning: []

Received in
General Files by: [] [] []
Name Signature Date

Final Plan/Plan Revision Distribution Order Form

Date

Project Number:

Project Name:

District:

New Plans or Revised Plans:

- New Plans / "Set" = Complete Set
- Revised Plans / "Set" = Revised Sheets Only

Revised Sheet Numbers: _____

Full Size:

- (1) Set District Administrator: _____
- (1) Set DOTD Project Engineer: _____
- (1) Set District Utility Representative: _____
- (1) Set District Lab Engineer: _____

- (1) Set Construction Section: _____

- (1) Set Contracting Agency: _____
Address: _____

- (1) Set Parish Government: _____
Address: _____

Half Size:

- (1) Set DOTD Project Manager: _____
- (1) Set Bridge Design Section: _____
- (1) Set Road Design Section: _____
- (1) Set Pavement & Geotechnical: _____
- (1) Set Prime Design Consultant: _____
Address: _____

- (1) Set Contracts & Specs: _____

- (2) Set Federal Aid Unit: _____
(For Federal Oversight Plans only)

Transmittal of Change Order Sheets to Construction

[]

Date

Project Number: []

Project Name: []

To: Construction Section

From: []
Name

[]
Section

Cc: []
Project Manager

Change Order Sheets Transmitted (include title sheet and voided sheets and a description of the changes made):

[]

Number of Copies: (10) sets of 11x17 and (4) sets of 22x34

Quantity Changes:

[]

Reasons for Change Order:

Design Errors
[]

Contractor Errors. See Below for DOTD Incurred Engineering Cost (if applicable)
[]

Change in Field Condition
[]

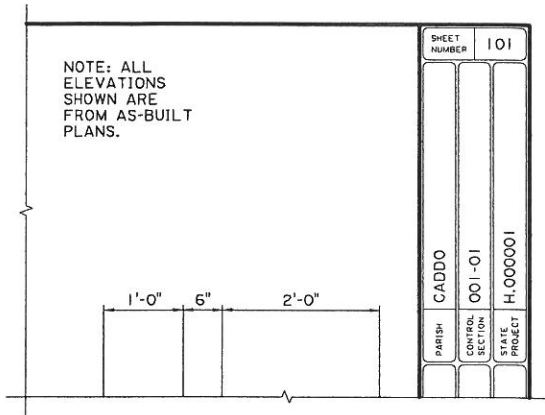
Other
[]

DOTD Incurred Engineering Cost: []

PLAN REVISION NO. 1

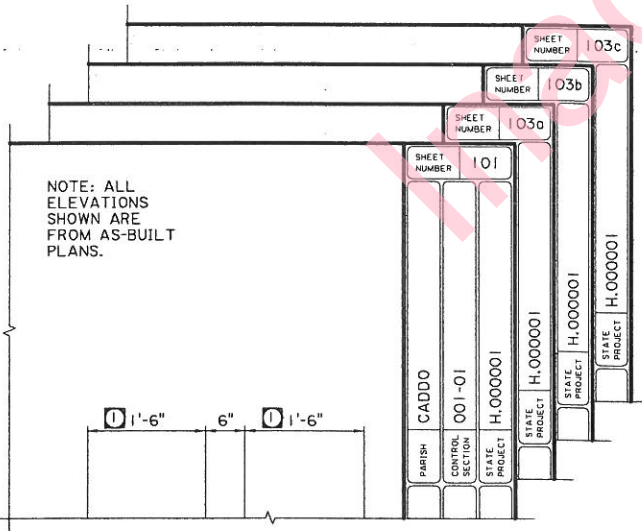
CHANGE DIMENSION ON SHEET 101.
ADD THREE SHEETS BETWEEN SHEETS 103 AND 104.

ORIGINAL SHEET



NO.	DATE	REVISION OR CHANGE ORDER DESCRIPTION	BY	DESIGN CHECK

REVISED SHEETS



NO.	DATE	REVISION OR CHANGE ORDER DESCRIPTION	BY	DESIGN CHECK
1	01/01/12	DIMENSION CHANGE	J.D.	
1	01/01/12	NEW SHEET	J.D.	
1	01/01/12	NEW SHEET	J.D.	
1	01/01/12	NEW SHEET	J.D.	

SCHEDULE OF REVISIONS BLOCK ON TITLE SHEET

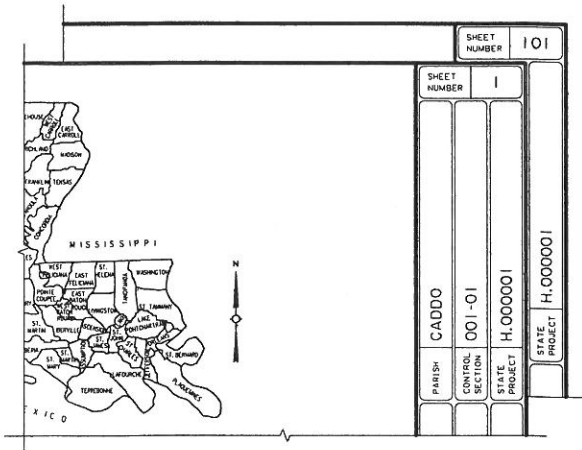
1	01/01/12	1, 101, 103a, 103b, 103c	01/02/12	S.H.	01/03/12
	DATE	REVISION	DATE	RECOMMENDED	DATE APPROVED

SCHEDULE OF REVISIONS

PLAN REVISION NO. 2

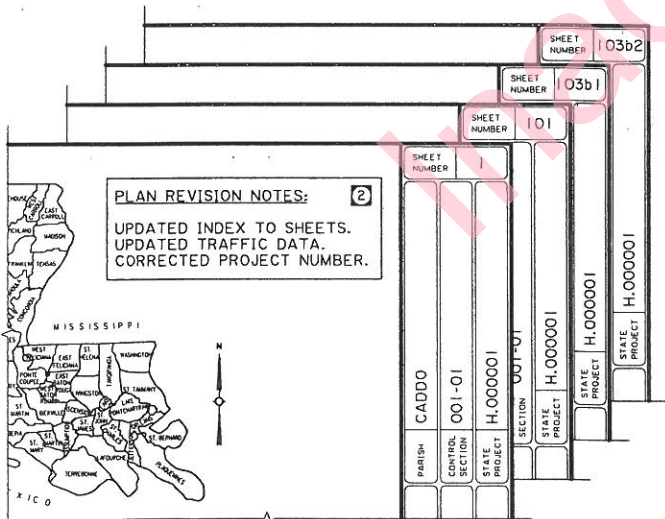
UPDATE SHEET INDEX, TRAFFIC DATA, AND CORRECT PROJECT NUMBER ON SHEET 1.
REVISE ELEVATION NOTE ON SHEET 101.
ADD TWO SHEETS BETWEEN SHEETS 103b AND 103c.

ORIGINAL SHEETS



NO.	DATE	REVISION OR CHANGE ORDER DESCRIPTION	BY	DESIGN CHECK	DETAIL CHECK
1	01/01/12	DIMENSION CHANGE	J.D.		

REVISED SHEETS



NO.	DATE	REVISION OR CHANGE ORDER DESCRIPTION	BY	DESIGN CHECK	DETAIL CHECK
2	01/08/12	SEE PLAN REVISION NOTES	J.D.		
2	01/08/12	REVISED ELEVATION NOTE	J.D.		
1	01/01/12	DIMENSION CHANGE	J.D.		
2	01/08/12	NEW SHEET	J.D.		
2	01/08/12	NEW SHEET	J.D.		

NOTE: PLAN REVISION 2 BUGS ALSO ADDED BY EACH UPDATED SHEET NUMBER IN THE INDEX, BY ALL CHANGED TRAFFIC DATA, AND BY THE CORRECTED PROJECT NUMBER.

SCHEDULE OF REVISIONS BLOCK ON TITLE SHEET

NO.	DATE	REVISION	DATE	RECOMMENDED	DATE	APPROVED
2	01/08/12	1, 101, 103b1, 103b2	03/09/12	S.H.	03/10/12	C.E.
1	01/01/12	1, 101, 103b, 103b, 103c	03/02/12	S.H.	03/03/12	C.E.

SCHEDULE OF REVISIONS

CHANGE ORDER NO. 1

CHANGE DIMENSION ON SHEET 101.
ADD JOINT DETAIL ON SHEET 103b.

ORIGINAL SHEETS

<p>NOTE: ALL ELEVATIONS SHOWN ARE FROM SURVEY.</p> <div style="border: 2px solid black; padding: 10px; width: 100px; margin: 10px auto;"> <p style="font-size: 24px; font-weight: bold; text-align: center;">VOID</p> <p style="font-size: 10px; text-align: center;">BY: J.D. DATE: 01/15/12</p> </div>		SHEET NUMBER	103b			
		SHEET NUMBER	101			
<p>1' - 6" 6" 1' - 6"</p>	PARISH	CADD	CONTROL SECTION	001-01	STATE PROJECT	H.000001
	SECTION	001-01	STATE PROJECT	H.000001		

NO.	DATE	REVISION OR CHANGE ORDER DESCRIPTION	BY	DESIGN CHECK	DETAIL CHECK
2	01/08/12	REVISED ELEVATION NOTE	J.D.	CHECK	CHECK
1	01/01/12	DIMENSION CHANGE	J.D.	CHECK	CHECK
1	01/01/12	NEW SHEET	J.D.	CHECK	CHECK

CHANGE ORDER SHEETS

<p>NOTE: ALL ELEVATIONS SHOWN ARE FROM SURVEY.</p> <div style="border: 1px solid black; padding: 10px; width: 150px; margin: 10px auto;"> <p style="font-weight: bold;">CHANGE ORDER AND/OR SPECIAL AGREEMENT</p> </div>		SHEET NUMBER	103bA			
		SHEET NUMBER	101A			
<p>1' - 6" 2' - 0"</p>	PARISH	CADD	CONTROL SECTION	001-01	STATE PROJECT	H.000001
	SECTION	001-01	STATE PROJECT	H.000001		

NO.	DATE	REVISION OR CHANGE ORDER DESCRIPTION	BY	DESIGN CHECK	DETAIL CHECK
4	04/15/12	DIMENSION CHANGE	J.D.	CHECK	CHECK
2	01/08/12	REVISED ELEVATION NOTE	J.D.	CHECK	CHECK
1	01/01/12	DIMENSION CHANGE	J.D.	CHECK	CHECK
1	04/15/12	ADDED JOINT DETAIL	J.D.	CHECK	CHECK
1	01/01/12	NEW SHEET	J.D.	CHECK	CHECK

CHANGE ORDER NO. 3

DELETE ELEVATION NOTE ON SHEET 101A.
 ASSUME MODIFICATIONS MADE BY AN ENGINEER OTHER THAN THE ORIGINAL ENGINEER OF RECORD.
 ADD ONE SHEET BETWEEN SHEETS 103b1 AND 103b2.

ORIGINAL SHEETS

NOTE: ALL ELEVATIONS SHOWN ARE FROM SURVEY.

VOID

BY: R.M.
DATE: 01/29/12

CHANGE ORDER AND/OR SPECIAL AGREEMENT

1'-6"
2'-0"

SHEET NUMBER 101A

CADD

CONTROL SECTION 001-01

STATE PROJECT H.000001

NO.	DATE	REVISION OR CHANGE ORDER DESCRIPTION	BY	DESIGN CHECK
1	04/15/12	DIMENSION CHANGE	J.D.	DESIGN CHECK
2	01/08/12	REVISED ELEVATION NOTE	J.D.	DETAIL CHECK
3	01/01/12	DIMENSION CHANGE	J.D.	SERIE NUMBER CHECK

CHANGE ORDER SHEETS:

CHANGE ORDER AND/OR SPECIAL AGREEMENT

1'-6"
2'-0"

SHEET NUMBER 101B

CADD

CONTROL SECTION 001-01

STATE PROJECT H.000001

NO.	DATE	REVISION OR CHANGE ORDER DESCRIPTION	BY	DESIGN CHECK
1	04/29/12	DELETED ELEVATION NOTE	R.M.	DESIGN CHECK
2	04/15/12	DIMENSION CHANGE	J.D.	DETAIL CHECK
3	01/08/12	REVISED ELEVATION NOTE	J.D.	DESIGN CHECK
4	01/01/12	DIMENSION CHANGE	J.D.	DETAIL CHECK
5	04/29/12	NEW SHEET	R.M.	SERIE NUMBER CHECK

Richard Miles
04/29/2012

John Doe
04/15/2012

CHANGE ORDER AND/OR SPECIAL AGREEMENT

BRIDGE AND STRUCTURAL DESIGN

END BENTS

CREEK BRIDGE

LA 123 BRIDGES

LA 123 BRIDGES