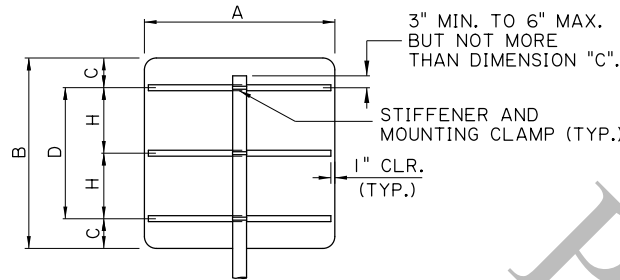


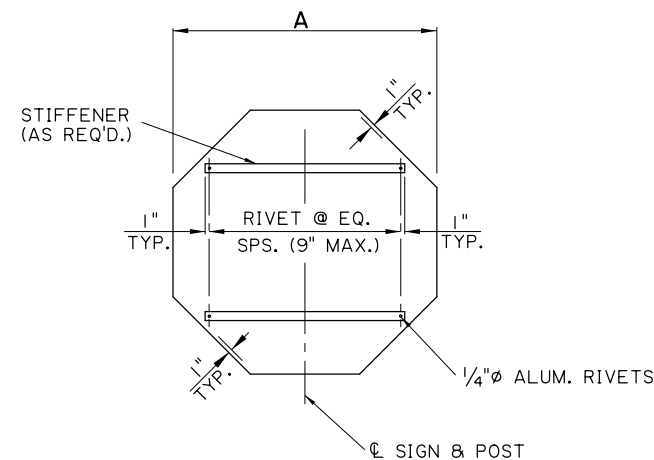
9/10/2025



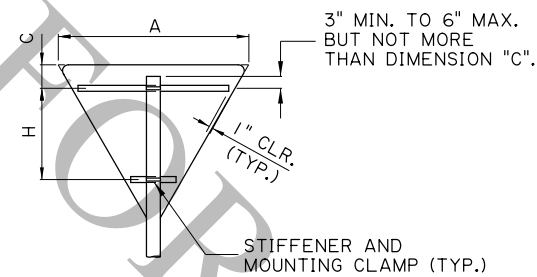
SQUARE, RECTANGLE, CIRCLE, OCTAGON AND ROUTE MARKERS

SQUARE, RECTANGLE, CIRCLE, OCTAGON AND ROUTE MARKERS					
A (IN.)	B (IN.)	C (IN.)	D (IN.)	H (IN.)	STIFFENER NUMBER REQUIRED
↑ VARIABLE 12" TO 48" ↓	6	3			1
	12	6			1
	15	7.5			1
	18	9			1
	24	6	12		2
	30	7.5	15		2
	36	7.5	21		2
	48	10	28		2
	60	9	42	21	3
	72	11	6 ^Δ	25	3
84	10.5	6 ^Δ	21	4	
48	96	12	6 ^Δ	24	4

Δ LOCATION OF BORDER ANGLE FROM EDGE



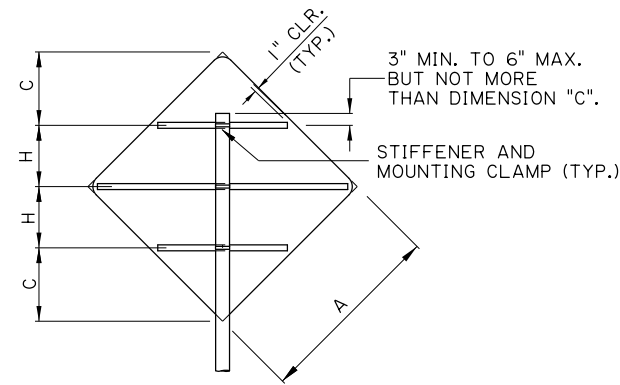
TYPICAL SIGN BACKING DETAIL



EQUILATERAL TRIANGLE

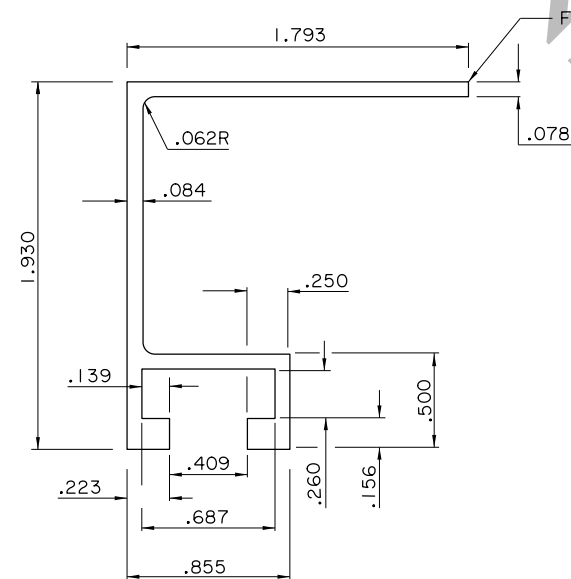
EQUILATERAL TRIANGLE			
A (IN.)	C (IN.)	H (IN.)	STIFFENER NUMBER REQUIRED
24	8		1
30	6	10	2
36	6	12.5	2
48	6	23	2
60	6	33.5	2

TYPE A SIGNS



DIAMOND

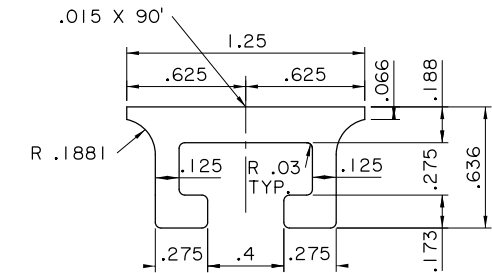
DIAMOND			
A (IN.)	C (IN.)	H (IN.)	STIFFENER NUMBER REQUIRED
24	10	6.97	1
30	12	9.21	2
36	14	11.46	2
48	18.5	15.44	3
60	22.5	19.93	3



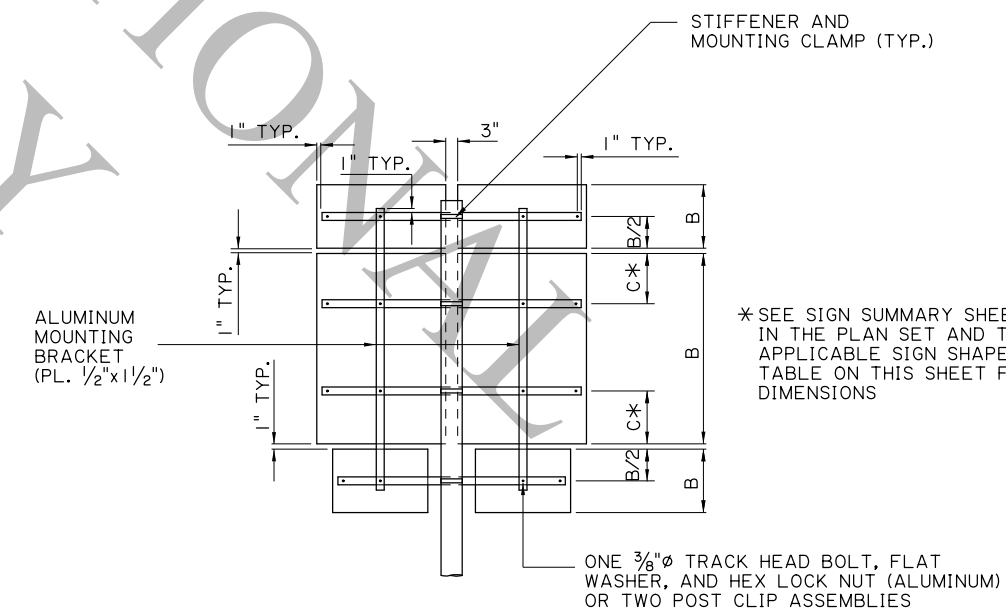
EXTRUSION STIFFENER
THIS STIFFENER REQUIRES THE USE OF RIVETS

NOTES:

- NO BOLTS SHALL BE PLACED THROUGH FACE OF SIGN.
- ALL TRACK HEAD BOLTS SHALL HAVE HEADS DESIGNED TO FIT AND TRANSMIT LOAD TO BOLT SLOTS IN THE STIFFENER.
- STIFFENERS SHALL BE ALUMINUM EXTRUSIONS AS DETAILED ON THIS SHEET UNLESS OTHERWISE NOTED.
- MOUNTING CLAMPS REQUIRED AT EACH HORIZONTAL STIFFENER.
- SIGN PANELS AND POSTS SHALL BE THE SIZE REQUIRED ON THE PLANS AND SUMMARY SHEET.
- SEE OTHER SHEETS FOR MOUNTING DETAILS.
- ALL SIGNS THAT REQUIRE BACKING SHALL BE INSTALLED WITH RIVETS.
- THIS SHEET TO BE USED WITH WIND LOAD MAP AND GENERAL NOTES SHEET.



EXTRUDED CHANNEL DETAIL



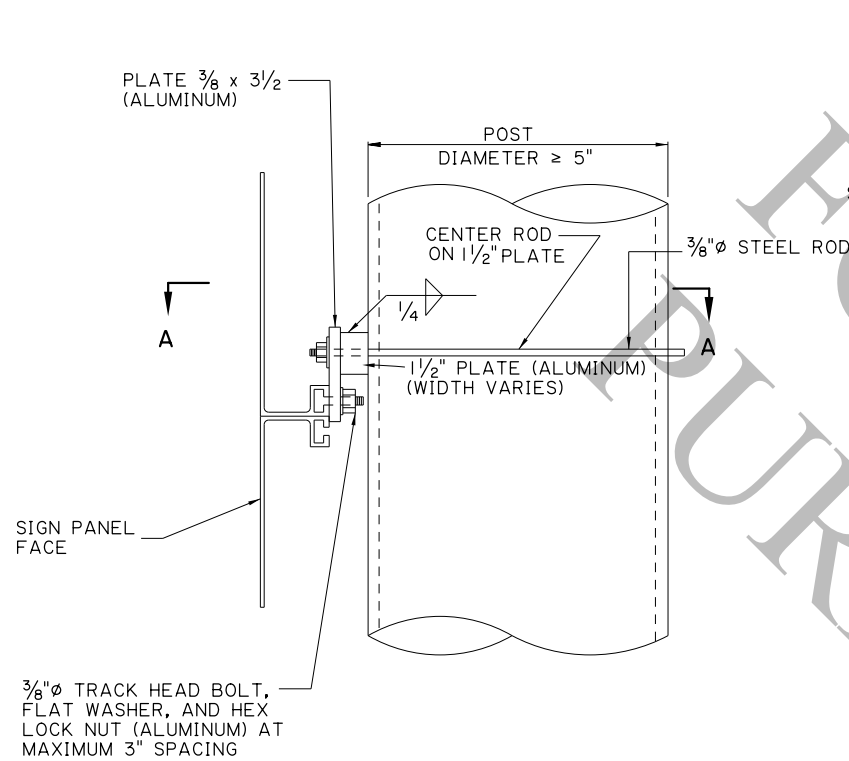
TYPE B SIGN
CLUSTER ASSEMBLY

* SEE SIGN SUMMARY SHEET IN THE PLAN SET AND THE APPLICABLE SIGN SHAPE TABLE ON THIS SHEET FOR DIMENSIONS

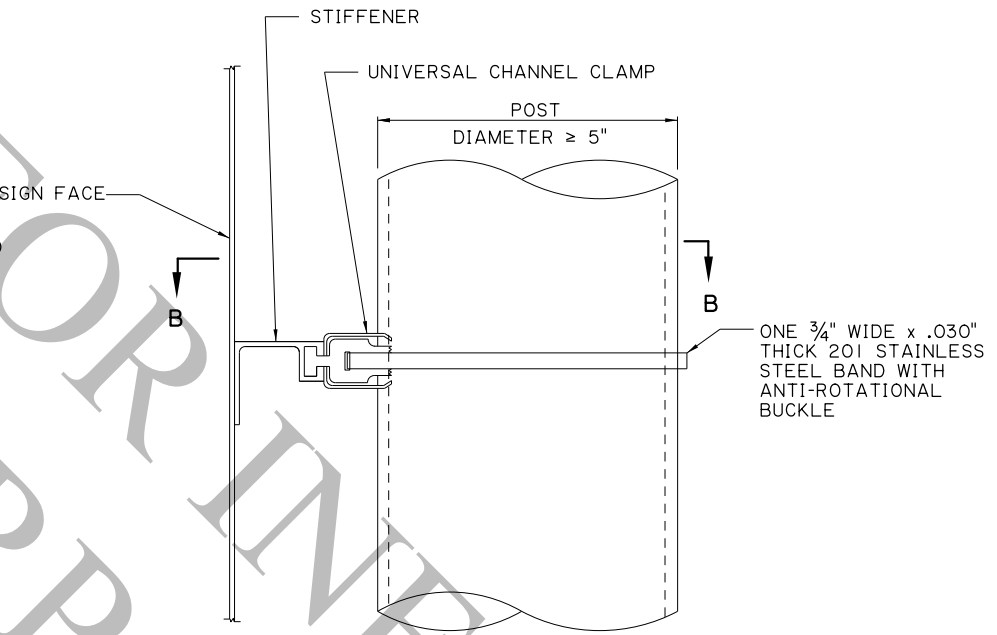
ONE 3/8" TRACK HEAD BOLT, FLAT WASHER, AND HEX LOCK NUT (ALUMINUM) OR TWO POST CLIP ASSEMBLIES

SHEET NUMBER		PARISH		CONTROL SECTION		STATE PROJECT	
DESIGN	K. BRAUNER	CHECK	C. GUIDRY	DESIGN	K. BRAUNER	CHECK	C. GUIDRY
REVIEW	C. BOURGEOIS	SERIES	# 2 OF 17	APPROVED BY CHIEF ENGINEER:			
				DATE: 10/14/2025			
REVISION OR CHANGE ORDER DESCRIPTION							
NO. DATE							
PANEL DETAILS (TYPE A & B SIGNS) ROADSIDE SIGNING STANDARDS							
STANDARD PLAN							

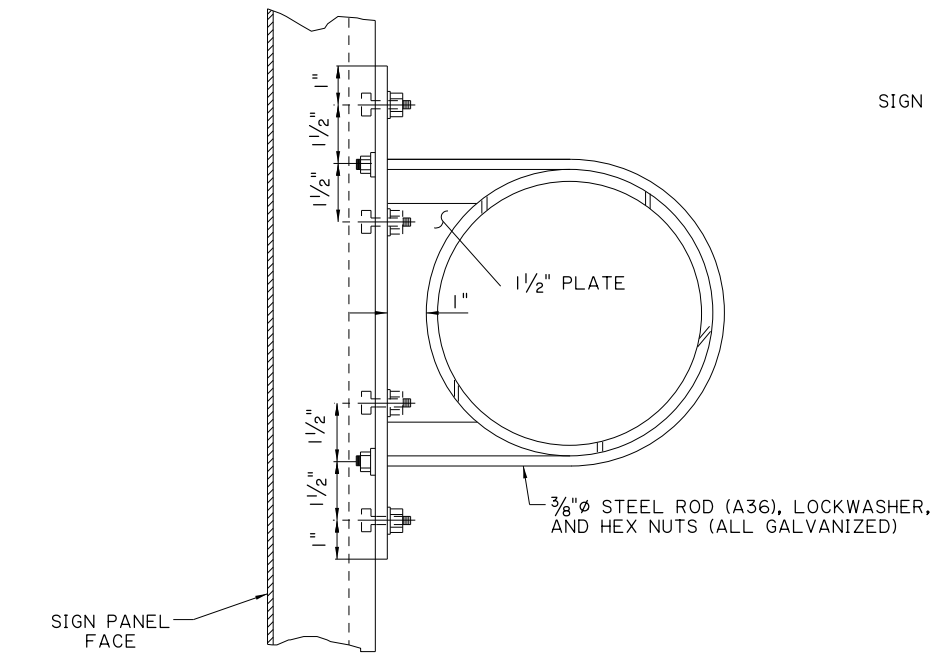
9/10/2025



ELEVATION
(TYPICAL AT EACH STIFFENER)

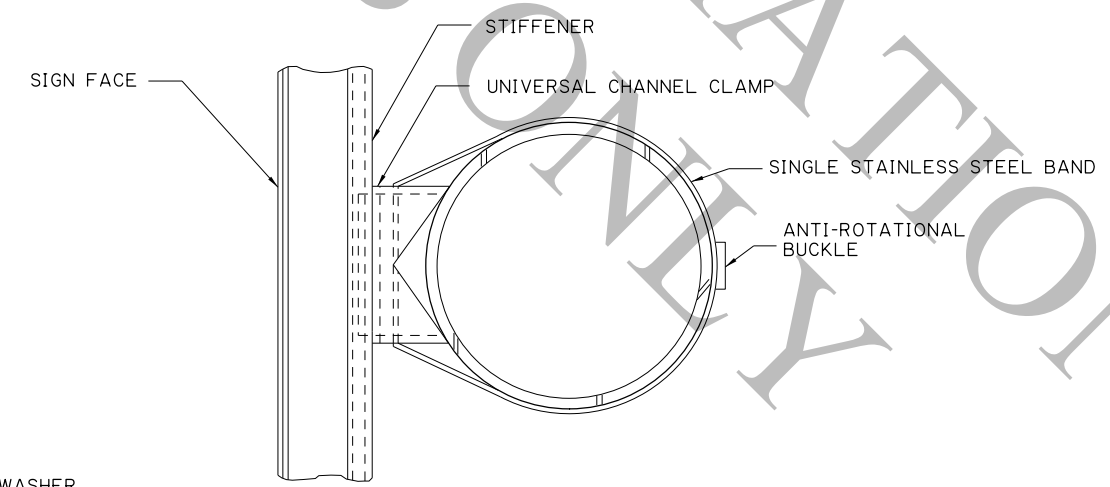


ELEVATION
(TYPICAL AT EACH STIFFENER)



SECTION A-A

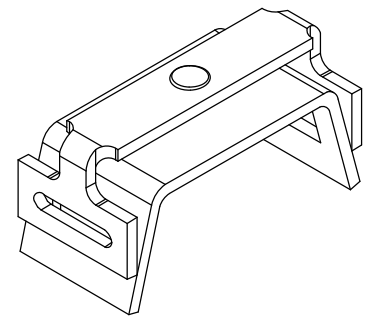
MOUNTING DETAIL (TYPE I)
FOR NON-TAPERED ROUND METAL POST
SIZES ≥ 5" DIAMETER AND SIGNS > 20 SQ. FT.



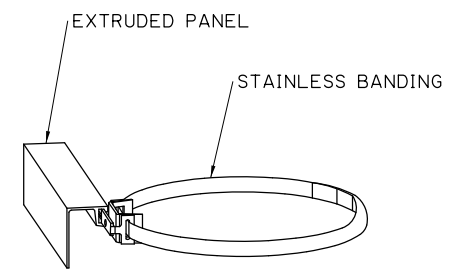
SECTION B-B

MOUNTING DETAIL (BAND TYPE)
FOR ALL POSTS ≥ 5" AND WITH SIGN AREAS
< 20 SQ. FT. OR LESS THAN 4 FEET WIDE

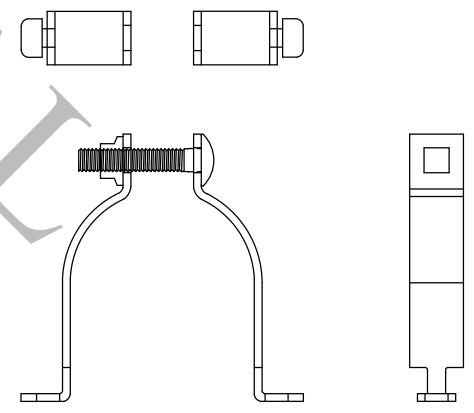
NOTES:
NO BOLTS SHALL BE PLACED THROUGH FACE OF SIGN.
ALL TRACK HEAD BOLTS SHALL HAVE HEADS DESIGNED TO FIT AND TRANSMIT LOAD TO BOLT SLOTS IN THE STIFFENER.
MOUNTING CLAMP REQUIRED AT EACH HORIZONTAL STIFFENER.



STAINLESS STEEL BANDING



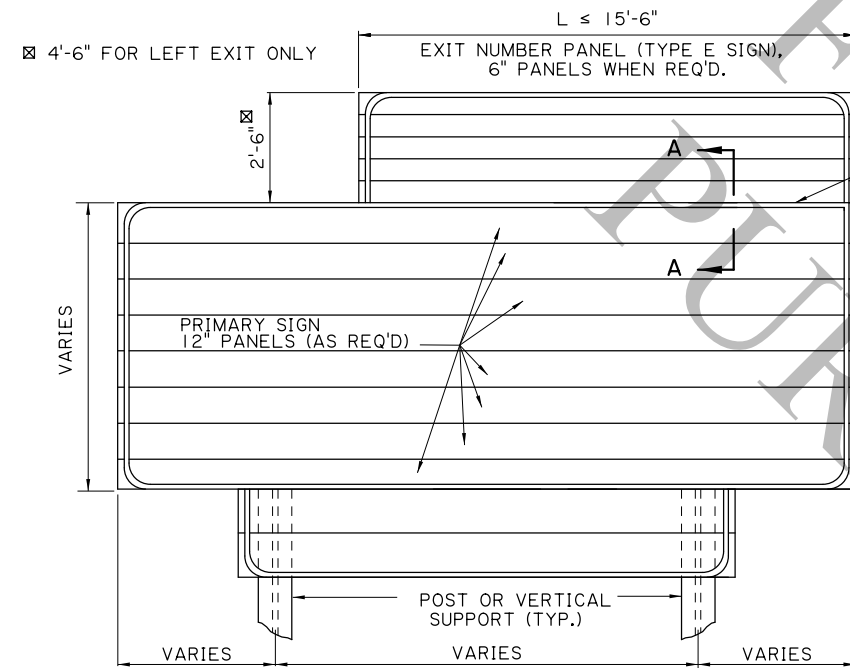
EXTRUDED PANEL BANDING CLIP



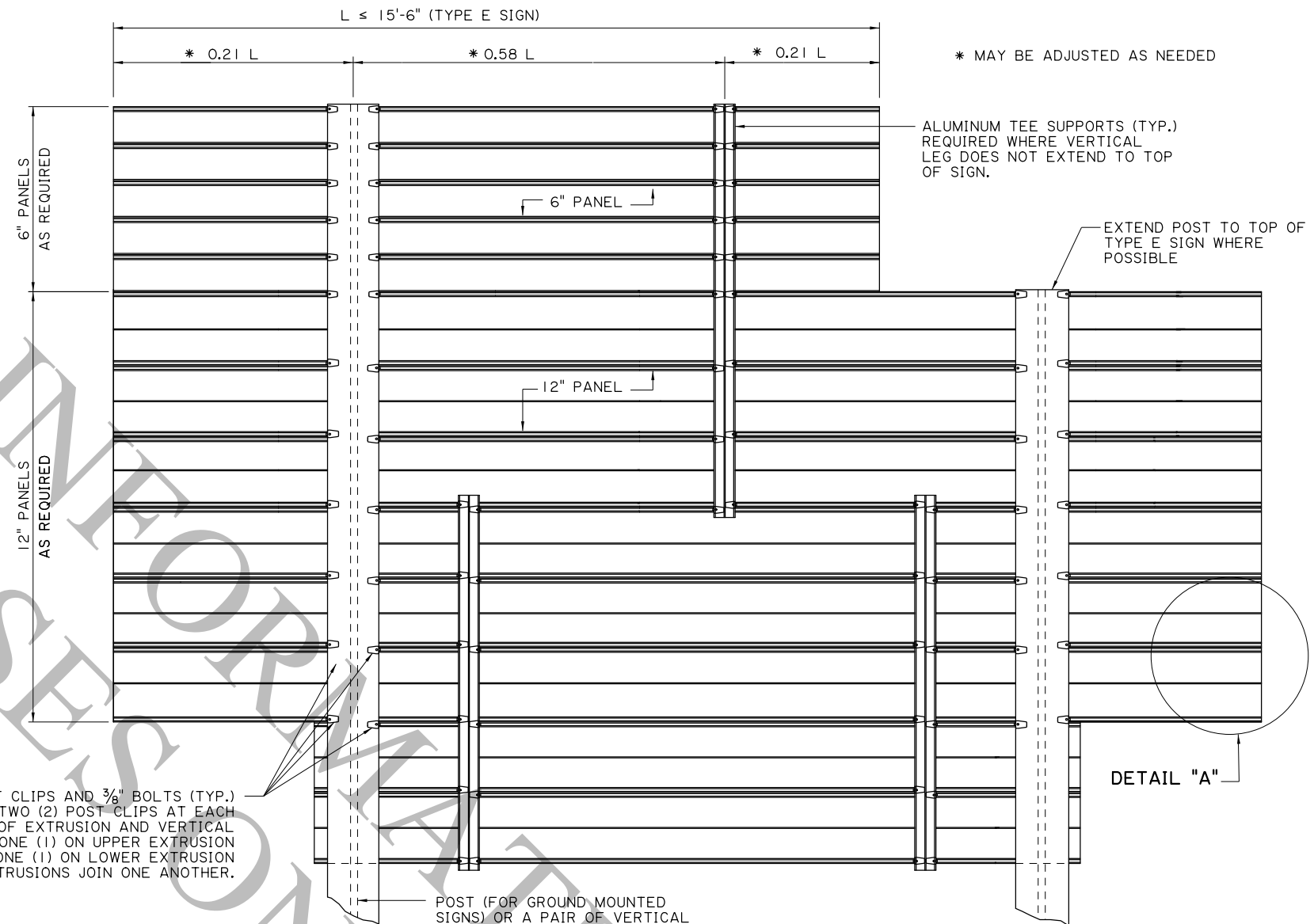
ROUND POST CLAMPS

SHEET NUMBER		PARISH		CONTROL SECTION		STATE PROJECT	
DESIGN	K. BRAUNER	CHECK	C. GUIDRY	DESIGN	K. BRAUNER	CHECK	C. GUIDRY
DETAIL	K. BRAUNER	CHECK	C. GUIDRY	REVIEW	C. BOURGEOIS	SERIES	# 3 OF 17
APPROVED BY CHIEF ENGINEER:		DATE:		10/14/2025			
REVISION OR CHANGE ORDER DESCRIPTION		NO.		DATE			
STATE OF LOUISIANA		TRANSPORTATION		STANDARD PLAN			
MOUNTING DETAILS		(TYPE A & B SIGNS)		ROADSIDE SIGNING STANDARDS			
DOTD		LOUISIANA DEPARTMENT OF TRANSPORTATION & DEVELOPMENT		STANDARD PLAN			

9/10/2025



FRONT ELEVATION



BACK ELEVATION

NOTES:

EXTRUDED ALUMINUM PANELS WILL BE ALLOWED AS AN ALTERNATE TO SIGN PANEL DETAILS FOR TYPE "D" AND "E" GROUND MOUNTED SIGNS ONLY. NUMBER AND SPACING OF POST SHALL MATCH THOSE SHOWN FOR PANEL DETAILS.

ALL 12" EXTRUDED ALUMINUM PANELS SHALL BE ALUMINUM ALLOY 6063-T6.
 ALL POST CLIPS SHALL BE ALUMINUM ALLOY 356-T6.
 ALL EXTRUDED PANEL BOLTS AND POST CLIP BOLTS SHALL BE ALUMINUM.
 ALL HEX LOCK NUTS SHALL BE ALUMINUM ALLOY 2017-T4.
 ALL POST CLIP BOLTS SHALL BE TORQUED TO A MINIMUM OF 175 IN-LBS.
 ALL POST CLIP BOLTS SHALL HAVE HEADS DESIGNED TO FIT THE BOLT SLOTS IN THE PANELS.

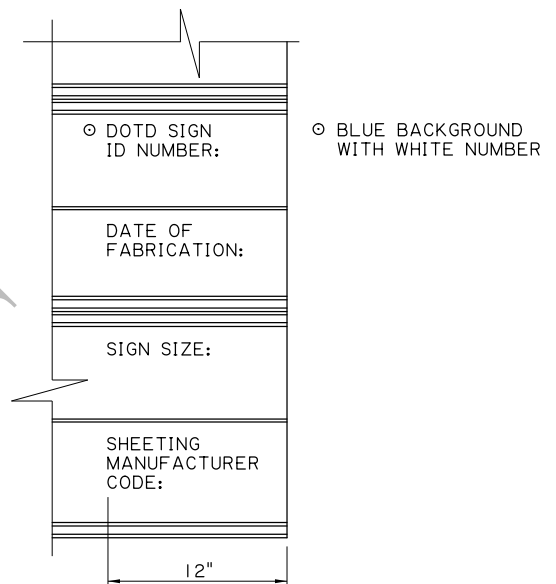
TYPE E SIGNS SHALL BE ATTACHED TO PRIMARY SIGNS WITH ALUMINUM TEE SUPPORTS, (5'-1" LENGTH), POST CLIPS, POST CLIP BOLTS, AND HEX LOCK NUTS.

FOR NEW OVERHEAD SIGNS (INCLUDING FASCIA MOUNTED) INCORPORATING EXISTING MOUNTS, THE CONTRACTOR WILL PLACE VERTICAL SUPPORT ANGLES WITHOUT SPLICES THAT EXTEND THE FULL HEIGHT OF THE EXTRUDED PRIMARY SIGN PANEL.

FOR NEW TYPE D SIGNS INCORPORATING EXISTING MOUNTS, THE EXISTING POST MAY BE REUSED IF THE NEW SIGN PANEL DOES NOT EXTEND OVER 2'-0" ABOVE THE EXISTING POST. SUCH NEW SIGNS WILL BE MOUNTED TO ALUMINUM TEE SUPPORTS BEGINNING AT THE TOP OF THE SIGN AND EXTENDING DOWNWARD FROM THE TOP OF THE POST THE DISTANCE THE NEW SIGN IS ABOVE THE EXISTING POST PLUS 1'-0". ONE TEE IS REQUIRED ADJACENT TO EACH EXISTING POST AND ATTACHED WITH POST CLIPS AS SHOWN FOR NEW TYPE E SIGNS. IF THE NEW SIGN EXTENDS OVER 2'-0" ABOVE THE EXISTING POST, THE CONTRACTOR IS TO REPLACE THE EXISTING POST AND MEET DETAILS FOR NEW CONSTRUCTION.

REFLECTIVE SHEETING FOR EXTRUDED PANELS: ONLY SPLICES THAT OCCUR AS PART OF THE MANUFACTURING PROCESS SHALL BE PERMITTED. A MAXIMUM OF TWO VERTICAL SPLICES ON ANY ONE SIGN FABRICATED USING EXTRUDED PANELS, WITH ONE SPLICE PER EXTRUDED PANELS SHALL BE ALLOWED. ALL "EXIT ONLY" PANELS THAT ARE DETAILED WITH THE TOP AND/OR BOTTOM EDGE NOT AT AN EXTRUDED PANEL EDGE SHALL BE FABRICATED FROM .080" ALUMINUM AND ATTACHED AS AN OVERLAY. ALL OTHER "EXIT ONLY" PANELS SHALL BE FABRICATED BY APPLYING THE YELLOW REFLECTIVE SHEETING ON THE EXTRUDED PANELS. THE REFLECTIVE SHEETING APPLIED TO EXTRUDED PANELS SHALL EXTEND APPROXIMATELY 1/4" OVER EACH SIDE AND SHALL BE ADHERED TO THE SIDE OF THE PANEL.

THIS SHEET TO BE USED WITH WIND LOAD MAP AND GENERAL NOTE SHEET.

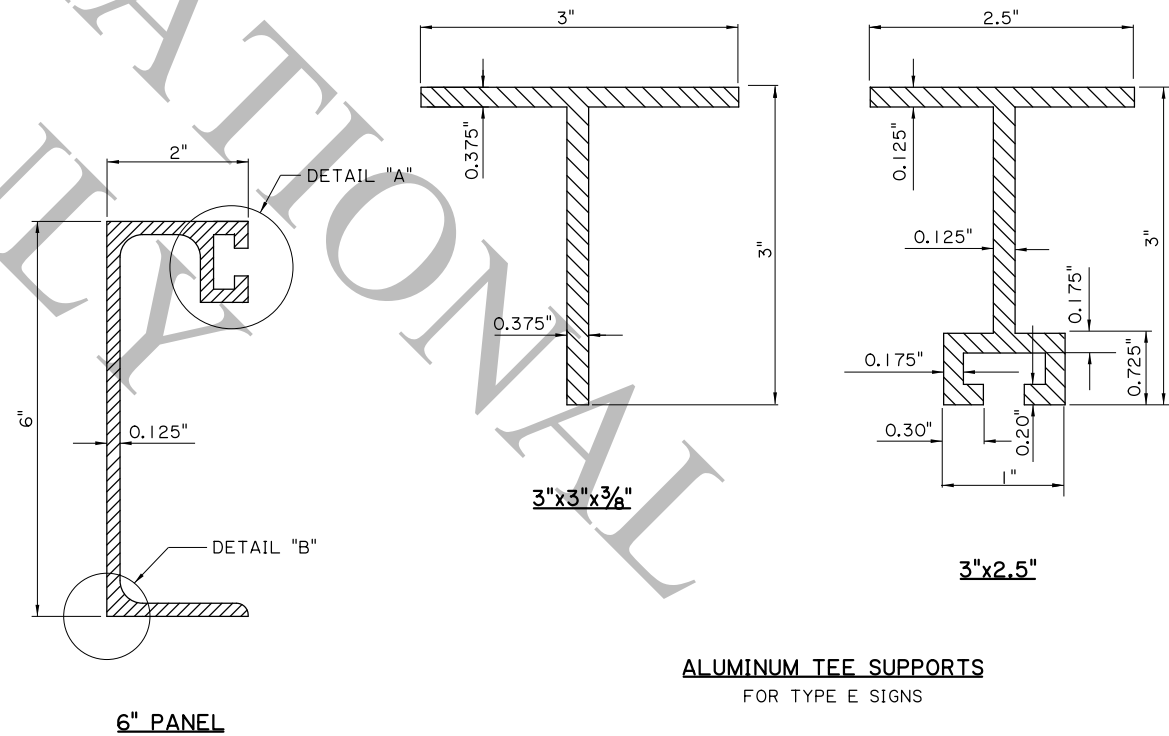
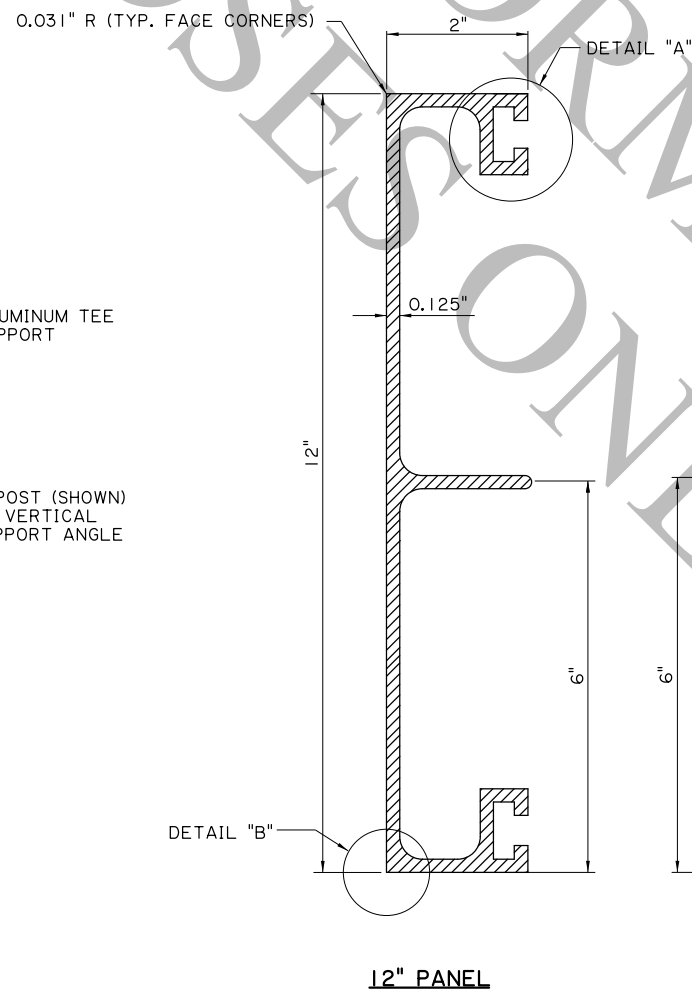
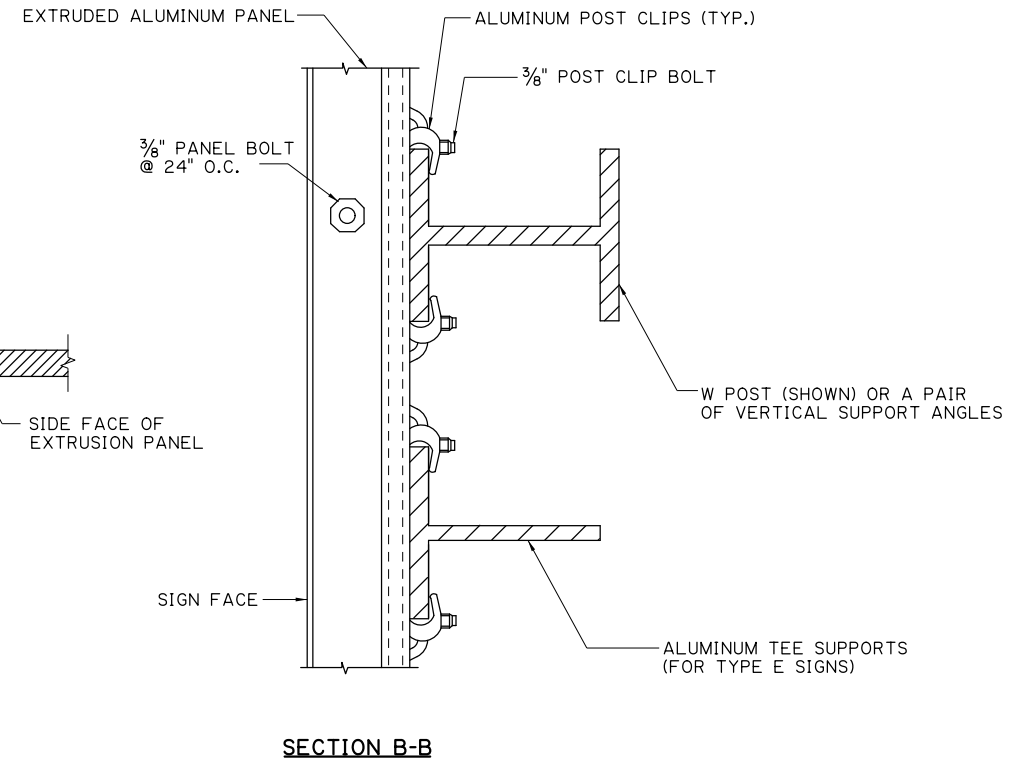
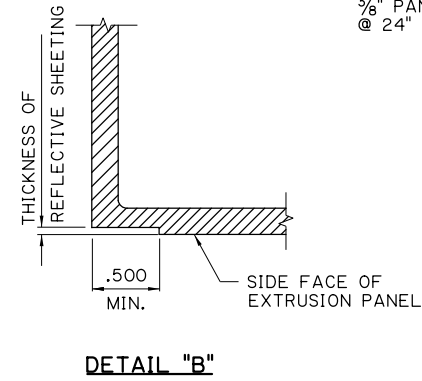
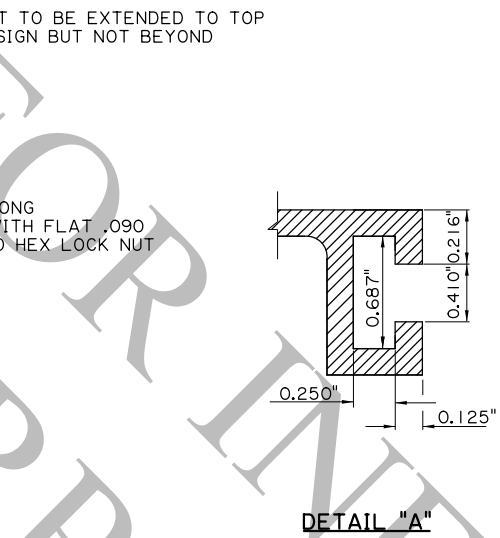
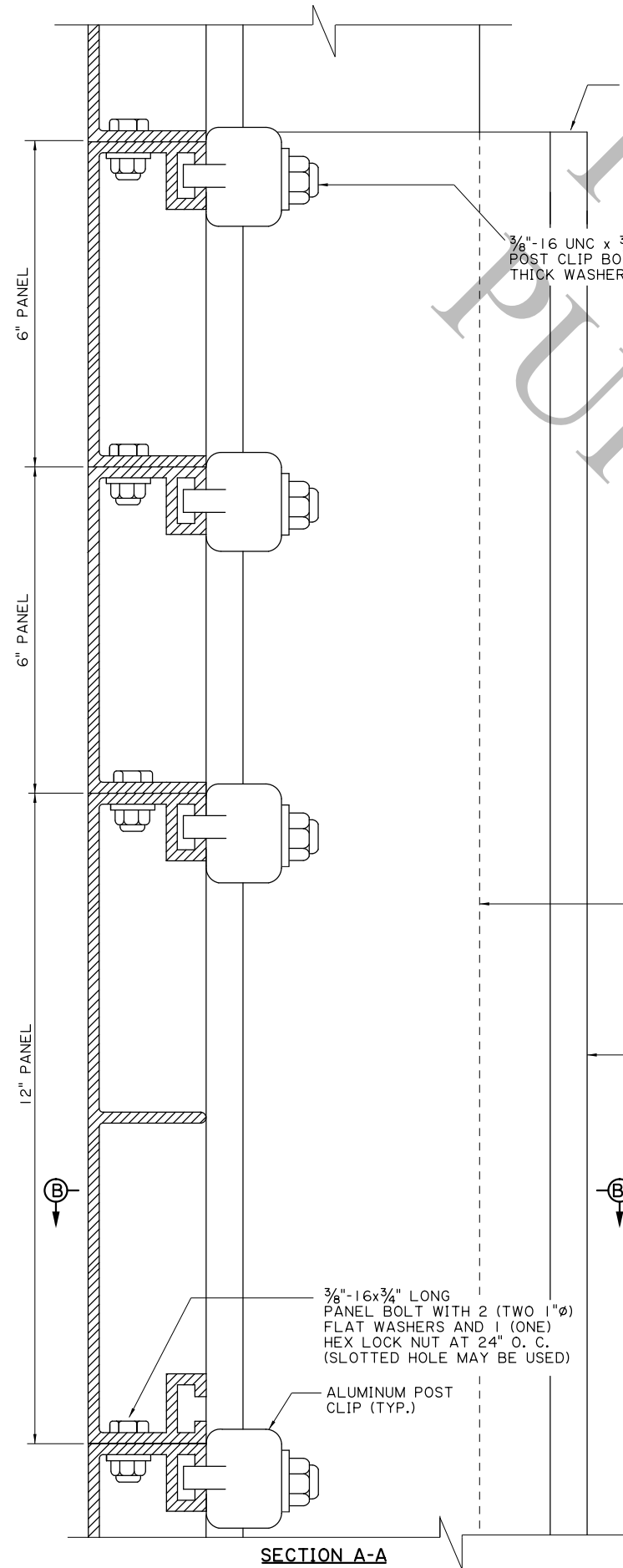


DETAIL "A"

2" LETTERING IN LAST 12" OF SIGN, SEE MISCELLANEOUS NOTE ON GENERAL NOTE SHEET OF TRAFFIC SIGN DETAILS.

SHEET NUMBER		PARISH		CONTROL SECTION		STATE PROJECT	
DESIGN	K. BRAUNER	CHECK	C. GUIDRY	DETAIL	K. BRAUNER	CHECK	C. GUIDRY
APPROVED BY CHIEF ENGINEER:	[Signature]		REVIEW	C. BOURGEOIS	SERIES # 5 OF 17		
DATE: 10/14/2025		REVISION OR CHANGE ORDER DESCRIPTION		NO.		DATE	
				EXTRUDED ALUMINUM SIGNS (TYPE D & E SIGNS)			
ROADSIDE SIGNING STANDARDS							
STANDARD PLAN							

9/10/2025

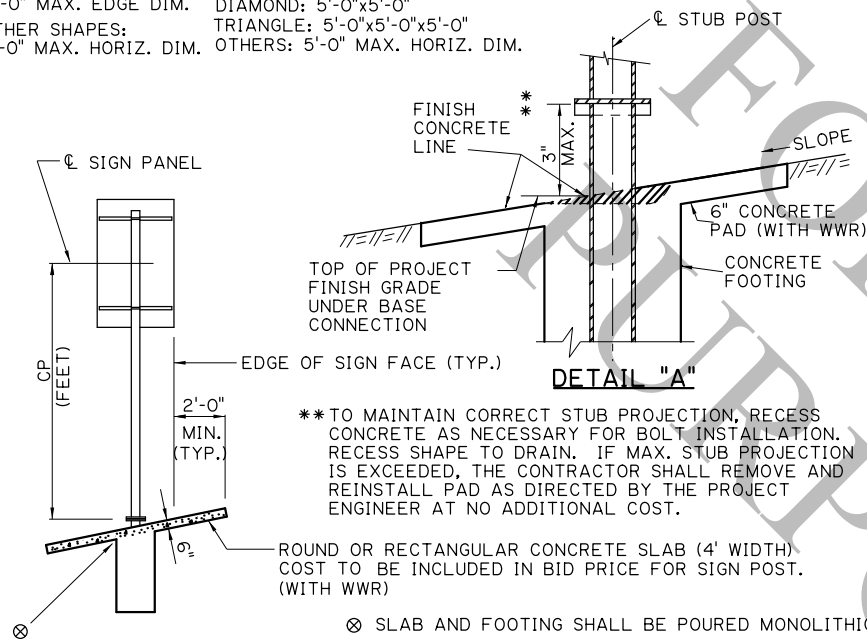


SHEET NUMBER		PARISH		CONTROL SECTION		STATE PROJECT	
DESIGN CHECK	K. BRAUNER	PARISH		CONTROL SECTION		STATE PROJECT	
DETAIL CHECK	C. GUIDRY	DESIGN CHECK	K. BRAUNER	DETAIL CHECK	C. GUIDRY	REVIEW	C. BOURGEOIS
APPROVED BY CHIEF ENGINEER:		DATE:		SERIES #		6 OF 17	
[Signature]		10/14/2025					
REVISION OR CHANGE ORDER DESCRIPTION		NO.		DATE		BY	
EXTRUDED ALUMINUM PANELS (TYPE D & E SIGNS)		ROADSIDE SIGNING STANDARDS		DOTD		LOUISIANA DEPARTMENT OF TRANSPORTATION & DEVELOPMENT	
STANDARD PLAN							

TYPE A SIGN **TYPE B SIGN**

RECTANGULAR SHAPES: 4'-0" MAX. HORIZ. DIM.
 DIAMOND SHAPES: 5'-0" MAX. EDGE DIM.
 OTHER SHAPES: 5'-0" MAX. HORIZ. DIM.

CLUSTER ASSEMBLY MAX. DIM. FOR DIFFERENT SIGN BLANK SHAPES ON SINGLE POST SIGNS.
 DIAMOND: 5'-0"x5'-0"
 TRIANGLE: 5'-0"x5'-0"x5'-0"
 OTHERS: 5'-0" MAX. HORIZ. DIM.



** TO MAINTAIN CORRECT STUB PROJECTION, RECESS CONCRETE AS NECESSARY FOR BOLT INSTALLATION. RECESS SHAPE TO DRAIN. IF MAX. STUB PROJECTION IS EXCEEDED, THE CONTRACTOR SHALL REMOVE AND REINSTALL PAD AS DIRECTED BY THE PROJECT ENGINEER AT NO ADDITIONAL COST.

ROUND OR RECTANGULAR CONCRETE SLAB (4' WIDTH) COST TO BE INCLUDED IN BID PRICE FOR SIGN POST. (WITH WWR)

⊗ SLAB AND FOOTING SHALL BE POURED MONOLITHIC.

SINGLE POST MOUNTS														
TOTAL SQ. FT. SIGN AREA														
STEEL ALTERNATE														
CP	ZONE I							ZONE II						
	5	10	15	20	25	30	35	5	10	15	20	25	30	35
7	1	1	1	2	2	3	1	1	1	2	2	3	3	3
8				2	2					2	2			
9					3						2			
10						2						2		
11							3						3	
12	1	2						1						
13	2								2					3
14						3								4
15							3							4
16	2	2	2	3	3	3	3	2	2	3	3	3	3	4

SINGLE POST PIPE & TUBE SECTIONS	
NO.	STEEL
1	2 1/2" Ø SCH. 40
2	3 1/2" Ø SCH. 40
3	5" Ø SCH. 40
4	6" Ø SCH. 40

NOTES:

W POST SECTIONS AND TABLE: COLUMNS HEADED BY THE NUMBERS 27 AND 20 REPRESENT THE DESIGN WIND PRESSURE IN POUNDS PER SQUARE FOOT. SEE ACCOMPANYING LOUISIANA WIND MAP TO DETERMINE THE DESIGN WIND PRESURE. L - LENGTH OF SIGN PANEL DESIGNED. H - HEIGHT OF SIGN PANEL DESIGNED. ALL DIMENSIONS ARE IN INCREMENTS OF EVEN FEET.

THIS SHEET TO BE USED WITH WIND LOAD MAP AND GENERAL NOTE SHEET.

CONCRETE SLAB TO BE REINFORCED WITH A.S.T.M. A1064 WWR 4x4-W4.0 x W4.0 AND FINISHED IN ACCORDANCE WITH LA. 805.3.060.E.

⊗ 30' MAX. (15' MIN.) FOR FREEWAYS AND EXPRESSWAYS. 15' FOR FRONTAGE ROADS, "BRIDGE ICES BEFORE ROAD" SIGNS, AND TYPE D RAMP SIGNS. SEE SIGN SUMMARY SHEETS. PROJECT ENGINEER MAY ADJUST ON A CASE-BY-CASE BASIS.

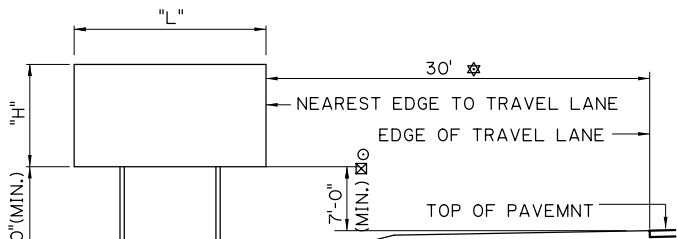
⊗ 7' MINIMUM FOR ROUTE MARKERS, WARNING AND REGULATORY SIGNS. 8' MINIMUM FOR GUIDE SIGNS WHEN SECONDARY SIGN MOUNTED BELOW.

⊗ MOUNTING HEIGHT SHALL BE 7'-0" MIN. UNLESS OTHERWISE NOTED ON THE SIGN SUMMARY SHEET. CHEVRON SIGNS (W1-8) MAY BE INSTALLED AT 4'-0" OR HIGHER.

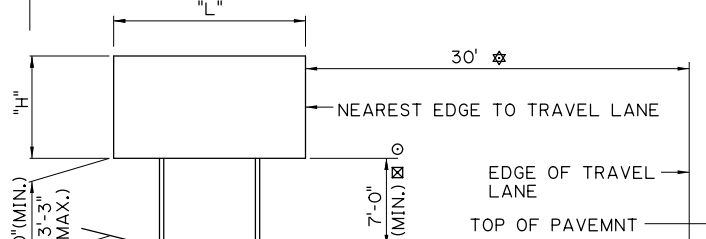
W POST SECTIONS FOR DOUBLE & TRIPLE POST MOUNTINGS															
PL	STEEL		PL	STEEL		PL	STEEL		PL	STEEL		PL	STEEL		
	L	H		L	H		L	H		L	H		L	H	L
5	1	1	12	5	2	1	16	15	4	4	21	8	3	3	
5	2	1	1	12	6	2	2	16	16	4	4	21	9	4	3
5	3	1	1	12	7	2	2	17	4	2	2	21	10	4	3
5	4	1	1	12	8	2	2	17	5	2	2	21	11	4	4
5	5	1	1	12	9	2	2	17	6	2	2	21	12	4	4
5	6	1	1	12	10	2	2	17	7	3	2	21	13	4	3
6	1	1	1	12	11	3	2	17	8	3	2	21	14	4	3
6	2	1	1	12	12	3	2	17	9	3	3	21	15	4	4
6	3	1	1	12	13	3	3	17	10	3	3	21	16	4	4
6	4	1	1	13	3	1	1	17	11	4	3	22	4	2	2
6	5	1	1	13	4	1	1	17	12	4	3	22	5	2	2
6	6	1	1	13	5	2	1	17	13	3	3	22	6	3	2
6	7	1	1	13	6	2	2	17	14	3	3	22	7	3	3
7	2	1	1	13	7	2	2	17	15	4	3	22	8	3	3
7	3	1	1	13	8	2	2	17	16	4	3	22	9	4	3
7	4	1	1	13	9	2	2	18	3	2	1	22	10	4	3
7	5	1	1	13	10	3	2	18	4	2	2	22	11	4	4
7	6	1	1	13	11	3	2	18	5	2	2	22	12	4	4
7	7	1	1	13	12	3	3	18	6	2	2	22	13	4	3
7	8	1	1	13	13	3	3	18	7	3	2	22	14	4	4
8	2	1	1	13	14	4	3	18	8	3	2	22	15	4	4
8	3	1	1	14	3	1	1	18	9	3	3	22	16	4	4
8	4	1	1	14	4	2	1	18	10	3	3	23	4	2	2
8	5	1	1	14	5	2	2	18	11	4	3	23	5	3	2
8	6	1	1	14	6	2	2	18	12	4	3	23	6	3	3
8	7	1	1	14	7	2	2	18	13	3	3	23	7	3	3
8	8	2	1	14	8	2	2	18	14	4	3	23	8	4	3
8	9	2	1	14	9	3	2	18	15	4	3	23	9	4	3
9	2	1	1	14	10	3	2	18	16	4	3	23	10	4	4
9	3	1	1	14	11	3	3	19	3	2	1	23	11	4	4
9	4	1	1	14	12	3	3	19	4	2	2	23	12	4	4
9	5	1	1	14	13	4	3	19	5	2	2	23	13	4	4
9	6	1	1	14	14	4	3	19	6	2	2	23	14	4	4
9	7	2	1	14	15	4	3	19	7	3	2	23	15	4	4
9	8	2	1	15	3	1	1	19	8	3	3	23	16	4	4
9	9	2	2	15	4	2	1	19	9	3	3	24	4	2	2
9	10	2	2	15	5	2	2	19	10	4	3	24	5	3	2
10	2	1	1	15	6	2	2	19	11	4	3	24	6	3	3
10	3	1	1	15	7	2	2	19	12	4	4	24	7	3	3
10	4	1	1	15	8	3	2	19	13	4	3	24	8	4	3
10	5	1	1	15	9	3	2	19	14	4	3	24	9	4	3
10	6	2	1	15	10	3	3	19	15	4	3	24	10	4	4
10	7	2	1	15	11	3	3	19	16	4	4	24	11	4	4
10	8	2	2	15	12	3	3	20	4	2	2	24	12	4	4
10	9	2	2	15	13	4	3	20	5	2	2	24	13	4	4
10	10	2	2	15	14	4	3	20	6	3	2	24	14	4	4
10	11	2	2	15	15	4	4	20	7	3	2	24	15	4	4
11	2	1	1	15	16	4	4	20	8	3	3	24	16	5	4
11	3	1	1	16	3	1	1	20	9	3	3	25	5	3	2
11	4	1	1	16	4	2	1	20	10	4	3	25	6	3	3
11	5	1	1	16	5	2	2	20	11	4	3	25	7	4	3
11	6	2	1	16	6	2	2	20	12	4	4	25	8	4	3
11	7	2	2	16	7	2	2	20	13	4	3	25	9	4	4
11	8	2	2	16	8	3	2	20	14	4	3	25	10	4	4
11	9	2	2	16	9	3	2	20	15	4	4	25	11	4	4
11	10	2	2	16	10	3	3	20	16	4	4	25	12	5	4
11	11	3	2	16	11	3	3	21	4	2	2	25	13	4	4
11	12	3	2	16	12	4	3	21	5	2	2	25	14	4	4
12	3	1	1	16	13	4	3	21	6	3	2	25	15	4	4
12	4	1	1	16	14	4	3	21	7	3	3	25	16	5	4

W SECTIONS	
NO.	STEEL
1	W6x12
2	W8x18
3	W8x24
4	W10x33
5	W12x40
6	W12x45

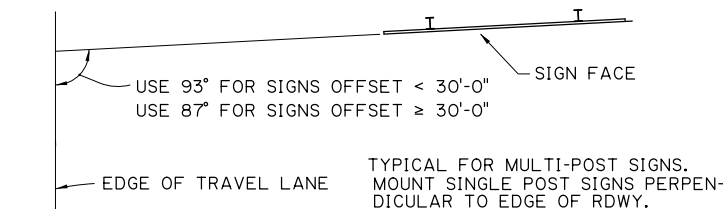
REAR ELEVATION OF SINGLE POST MOUNTING



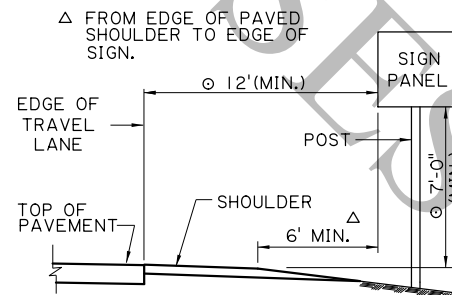
DETAIL FOR ALL SIGNS LOCATED ON FORE SLOPE (TWO SUPPORTS SHOWN)



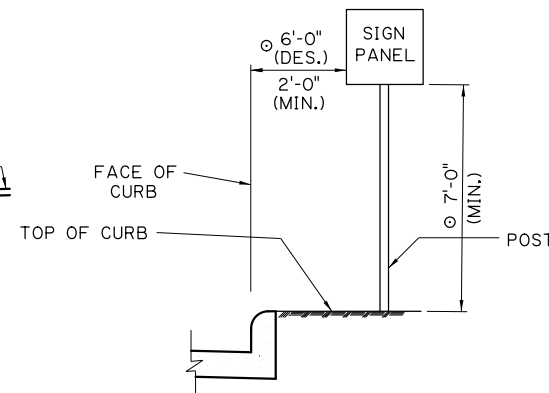
DETAIL FOR ALL SIGNS LOCATED ON BACK SLOPE (TWO SUPPORTS SHOWN)



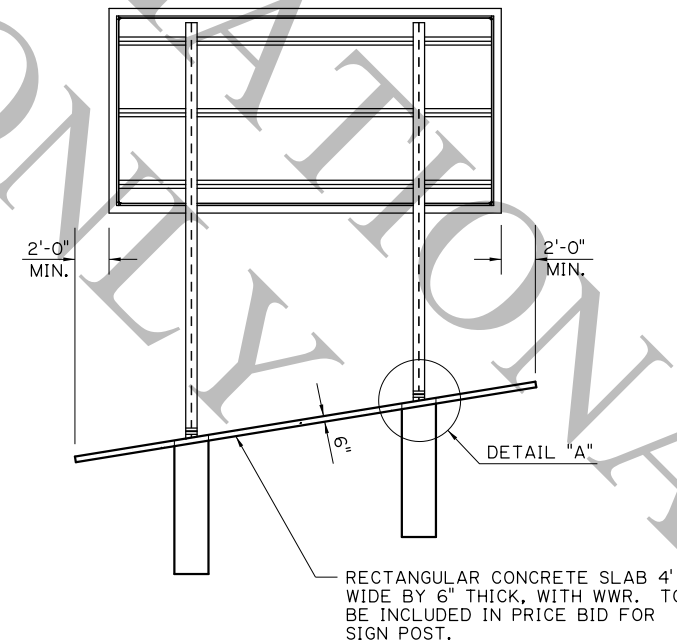
LOCATION OF ALL GROUND MOUNTED SIGN STRUCTURES (TWO SUPPORTS SHOWN)



ROADSIDE SIGN RURAL INTERSECTIONS



ROADSIDE SIGN URBAN INTERSECTIONS



REAR ELEVATION OF MULTI-POST MOUNTING

SHEET NUMBER: _____

DESIGN: K. BRAUNER CHECK: C. GUIDRY PARISH: _____

DETAIL: K. BRAUNER CHECK: C. GUIDRY CONTROL SECTION: _____

REVIEW: C. BOURGEOIS STATE: _____

SERIES: # 7 OF 17 PROJECT: _____

APPROVED BY CHIEF ENGINEER: _____ DATE: 10/14/2025

REVISION OR CHANGE ORDER DESCRIPTION: _____

NO. _____ DATE _____

STATE OF LOUISIANA

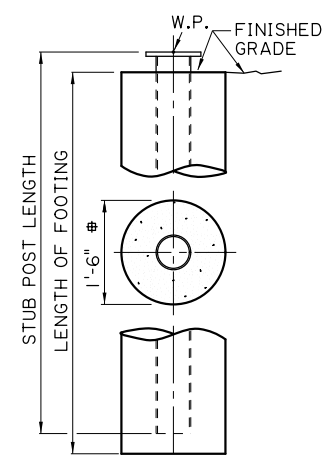
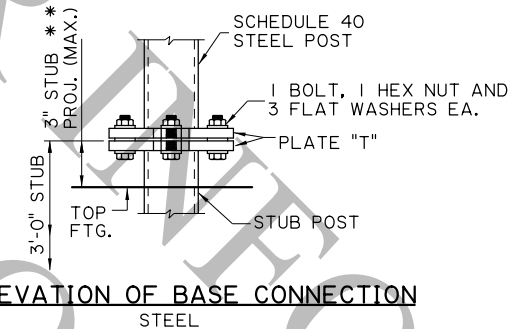
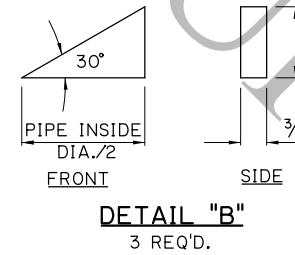
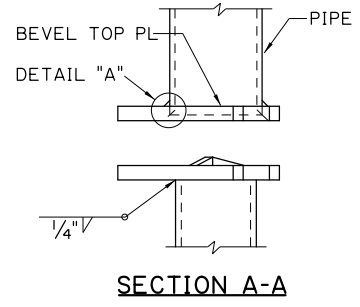
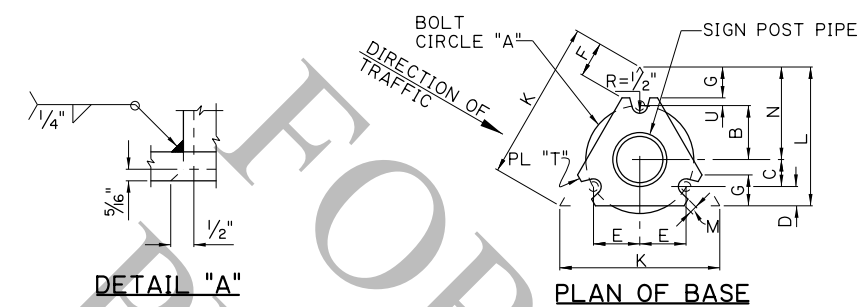
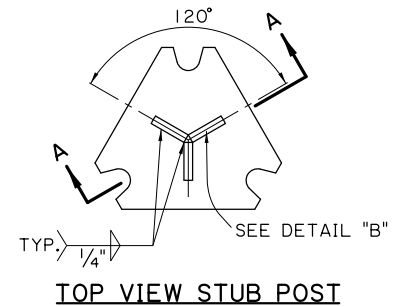
ROADSIDE MOUNTED SIGNS (TYPE A, B, & D SIGNS)

ROADSIDE SIGNING STANDARDS

DOTD LOUISIANA DEPARTMENT OF TRANSPORTATION & DEVELOPMENT

STANDARD PLAN

9/10/2025



PROCEDURE FOR ASSEMBLY OF BASE CONNECTION:
SPECIAL CARE SHALL BE TAKEN TO SET THE BASE PLUM TO AVOID EXCESSIVE SHIMMING AT THE BREAK-AWAY FEATURE AFTER FINAL INSTALLATION. EXCESSIVE SHIMMING COULD IMPAIR THE BREAK-AWAY FEATURE FOR WHICH THIS INSTALLATION WAS DESIGNED.

1. BASE SHALL BE ALIGNED AND SET PLUM BEFORE OR IMMEDIATELY AFTER POURING CONCRETE FOOTING.
2. H.S. BOLTS IN BASE PLATE SHALL BE TIGHTENED TO THE PRESCRIBED TORQUE. CARE SHALL BE TAKEN TO AVOID OVERTIGHTING.

FRICION CAPS:
CAPS MAY BE MANUFACTURED FROM EITHER HOT ROLLED OR COLD ROLLED STEEL SHEETS. FOR PIPE SIZES 3/2" AND SMALLER THE MINIMUM SHEET METAL THICKNESS SHALL BE 24 GAUGE. THE RIM EDGES SHALL BE REASONABLY STRAIGHT AND SMOOTH. CAPS SHALL BE SIZED AND FORMED IN SUCH A MANNER AS TO PRODUCE A DRIVE-ON FRICION FIT AND HAVE NO TENDENCY TO ROCK WHEN SEATED ON THE PIPE. THE DEPTH SHALL BE SUFFICIENT TO GIVE POSITIVE PROTECTION AGAINST ENTRANCE OF RAINWATER. THEY SHALL BE FREE OF SHARP CREASES OR INDENTATIONS AND SHOW NO EVIDENCE OF METAL FRACTURE. CAPS SHALL HAVE A ELECTRODEPOSITED COATING OF ZINC IN ACCORDANCE WITH THE REQUIREMENTS OF A.S.T.M. SPECIFICATION B633 SC4, TYPE 1.

THIS SHEET TO BE USED WITH WIND LOAD MAP AND GENERAL NOTE SHEET.

FOR 2 1/2" Ø (STEEL) POST SECTIONS, FOOTING DIAMETER SHALL BE 1'-0"

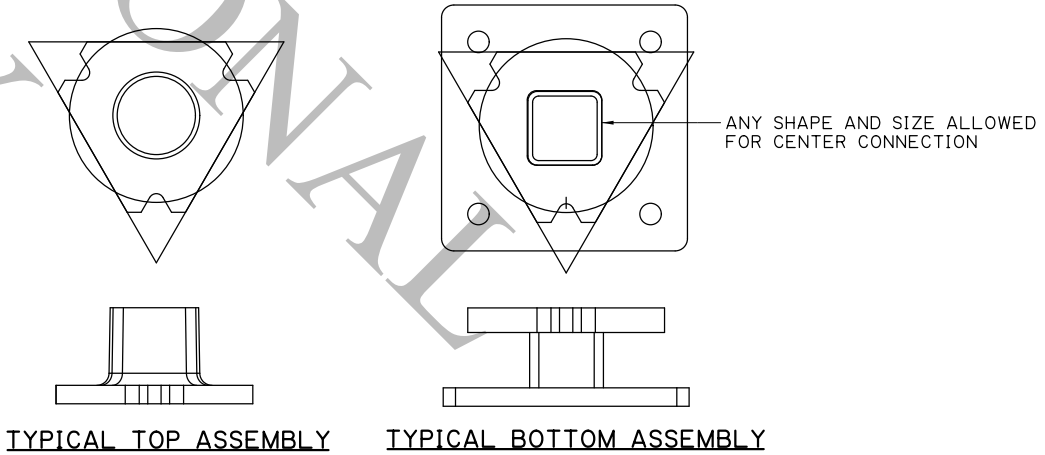
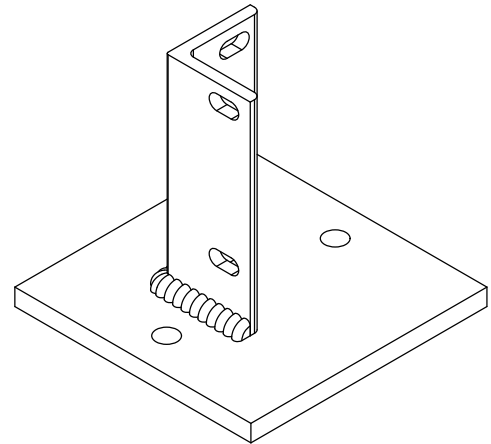
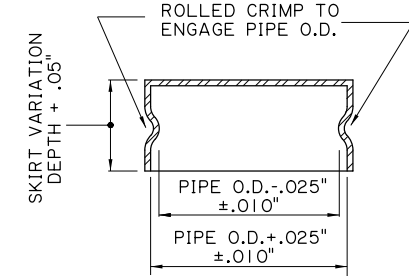
MULTI-DIRECTIONAL BASE
SINGLE STEEL POST ONLY

** IF MAX. STUB PROJECTION IS EXCEEDED, CONTRACTOR SHALL REMOVE AND REINSTALL PAD AS DIRECTED BY THE PROJECT ENGINEER AT NO COST TO THE DEPARTMENT.

STEEL MULTI-DIRECTIONAL BASE CONNECTION DATA																
NOMINAL PIPE SIZE	BOLT SIZE Ø & TORQUE	WELD SIZE	T	Y	A	B	C	D	E	F	G	K	L	M	N	U
2 1/2" OR 3 1/2" DIA.	5/8" T=226	3/8"	5/8"	7"	7"	3 1/2"	1 3/4"	1 1/4"	3"	2 5/8"	2"	10 3/8"	9"	1 1/2"	6"	1 1/2"

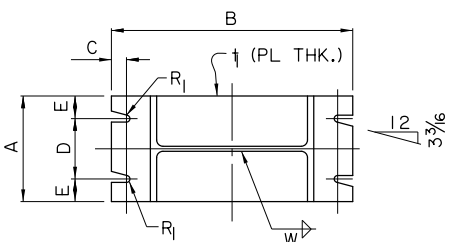
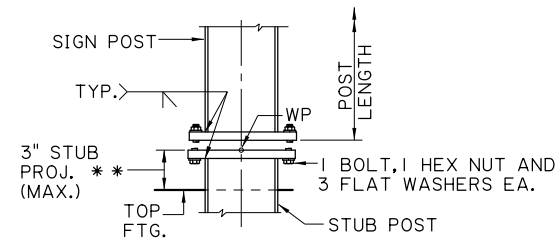
FOR STUB POST LENGTH & FOOTING DIMENSION SEE TABLE BELOW AND FOOTING DETAIL.
⊙ TORQUE IN INCH-LBS., BOLTS ARE HIGH STRENGTH

FOOTING DATA			
POST DIA.	STUB L	FOOTING L	CU.YD. CONC.
2 1/2"	36"	36"	0.09
3 1/2"	36"	36"	0.20
5"	48"	48"	0.26



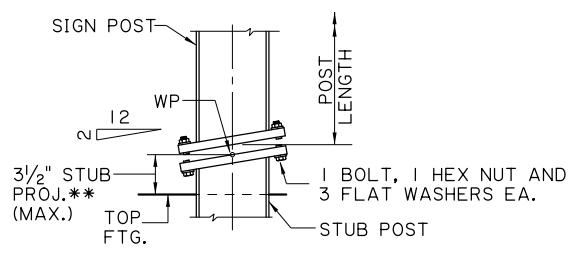
CONCRETE SURFACE MOUNT

SHEET NUMBER		PARISH		CONTROL SECTION		STATE PROJECT	
DESIGN	CHECK	DETAIL	REVIEW	DATE	SERIES # 8 OF 17		
K. BRAUNER		C. GUIDRY		K. BRAUNER		C. GUIDRY	
APPROVED BY CHIEF ENGINEER:		DATE: 10/14/2025		REVISION OR CHANGE ORDER DESCRIPTION			
ROADSIDE MOUNTED SIGN DETAILS		(TYPE A & B SIGNS)		ROADSIDE SIGNING STANDARDS			
DOTD		LOUISIANA DEPARTMENT OF TRANSPORTATION & DEVELOPMENT		STANDARD PLAN			



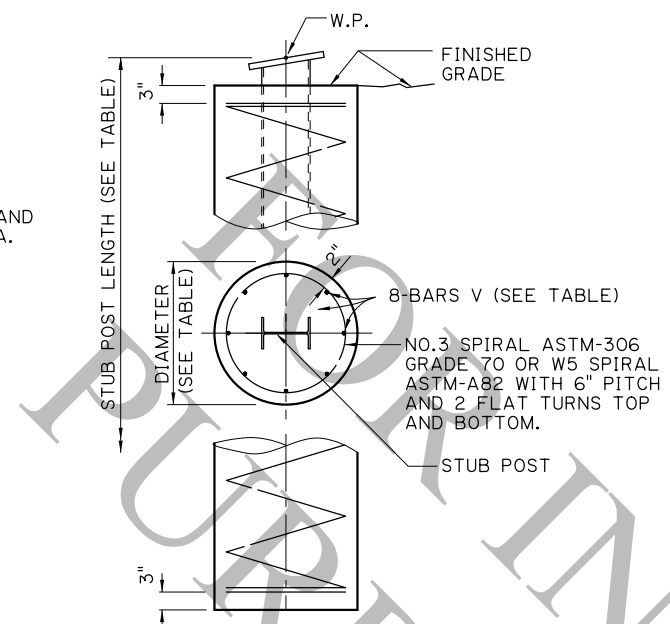
ADD 1/2" FOR BEVELED BASE PLATES

DIRECTION OF HIGHEST SPEED TRAFFIC



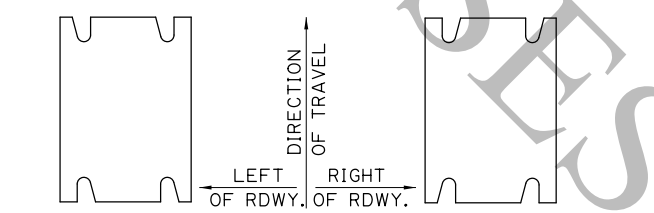
TO BE USED ON ALL MULTI-POST SIGNS WITH DISTANCE BETWEEN POSTS 7'-0" ϕ TO ϕ OR LESS.

** IF MAX. STUB PROJECTION IS EXCEEDED, CONTRACTOR SHALL REMOVE AND REINSTALL PAD AS DIRECTED BY THE PROJECT ENGINEER AT NO COST TO THE DEPARTMENT.



CONCRETE FOOTING DETAIL W SECTION

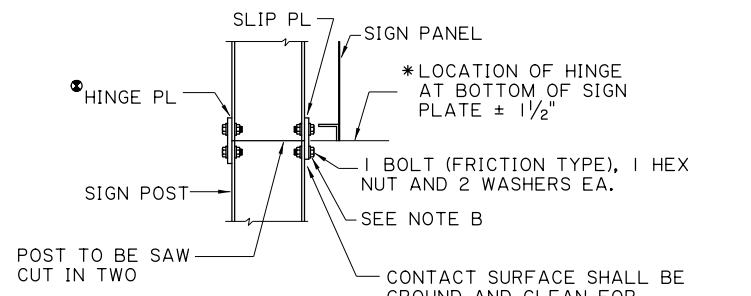
NOTE: NO REINFORCING STEEL IS REQUIRED FOR 'S' SECTION.



FOR ONE-WAY TRAFFIC LANES. FOR TWO-WAY TRAFFIC LANES, USE RIGHT HAND SLOTS ONLY.

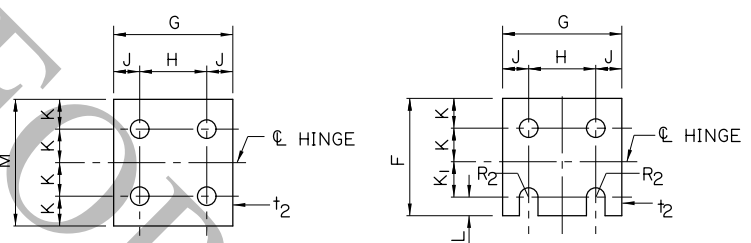


ORIENTATION AND USE OF SLOTS AND HOLES



SLIP PLATE CONNECTION DETAIL

WHEN SIGN IS LOCATED ON SIDE OF ROADWAY WITH TWO WAY TRAFFIC, A SLIP PLATE WILL BE USED ON BOTH SIDES OF THE POST IN LIEU OF THE HINGE PLATE SHOWN
 * FOR EXTRUSION SIGN PANEL ALTERNATE, LOCATION OF ϕ HINGE SHALL BE 3/2" FROM BOTTOM OF SIGN PANEL.



HINGE PLATE DETAIL **SLIP PLATE DETAIL**

* SHIM DETAIL BOLTS UP TO 3/4" ϕ BOLTS * SHIM DETAIL BOLTS UP TO 1" ϕ BOLTS

* FURNISH 2 SHIMS 0.012" \pm THICK AND 2 SHIMS 0.032" \pm THICK PER POST. SHIMS SHALL BE BRASS CONFORMING TO A.S.T.M. SPEC. B-36 AND BE USED AS DIRECTED BY THE PROJECT ENGINEER.

SLIP PLATE CONNECTION NOTES:

- POST SHALL BE SAW CUT OR TORCH CUT PRIOR TO GALVANIZING.
- SLIP PLATE SHALL BE INSTALLED WITH H.S. BOLTS AT MINIMUM BOLT TENSION.
- TIGHTING SHALL BE OBTAINED BY (a) TURN OF NUT METHOD; OR (b) DIRECT TENSION INDICATOR METHOD USING LOAD INDICATOR WASHER. SEE NOTE A.
- TIGHTING SHALL BE TO SUCH A DEGREE AS TO OBTAIN MINIMUM BOLT TENSION AS SPECIFIED IN STANDARD SPECIFICATIONS 807.3.030, CURRENT AT TIME OF FABRICATION.
- TIGHTEN BOLTS IN A SYSTEMATIC ORDER TO THE PRESCRIBED MINIMUM BOLT TENSION.

NOTE A:

WHEN HIGH STRENGTH BOLT IS TIGHTENED BY USE OF A DIRECT TENSION INDICATOR, THE INSTALLATION AND INSPECTION SHALL BE IN ACCORDANCE WITH SPECIFICATION FOR STRUCTURAL JOINTS, SECTION 5 AND 6 FOR ASTM A-325 BOLTS APPROVED BY THE RESEARCH COUNCIL ON RIVETED AND BOLTED STRUCTURAL JOINTS. FOR DETAILED INSTALLATION AND INSPECTION PROCEDURES FOLLOWED MANUFACTURER'S RECOMMENDATIONS. CONTRACTOR SHALL BE REQUIRED TO SUBMIT BROCHURES TO THE BRIDGE DESIGN ENGINEER FOR APPROVAL.

NOTE B:

WHEN HIGH STRENGTH BOLT IS TIGHTENED BY USE OF A DIRECT TENSION INDICATOR METHOD, THE WASHER UNDER THE BOLT HEAD SHALL BE A LOAD INDICATOR WASHER.

PROCEDURE FOR ASSEMBLY OF BASE CONNECTION:

SPECIAL CARE SHALL BE TAKEN TO SET THE BASE PLUMB TO AVOID EXCESSIVE SHIMMING AT THE BREAK-AWAY FEATURE AFTER FINAL INSTALLATION. EXCESSIVE SHIMMING COULD IMPAIR THE BREAK-AWAY FEATURE FOR WHICH THIS INSTALLATION WAS DESIGNED. SHIM PACKS SHOWN ON THIS DRAWING SHOULD BE SUFFICIENT TO ALLOW FOR NORMAL MISALIGNMENT.

- BASE SHALL BE ALIGNED AND SET PLUMB BEFORE OR IMMEDIATELY AFTER POURING CONCRETE FOOTING.
- H.S. BOLTS IN BASE PLATE SHALL BE TIGHTENED TO THE PRESCRIBED TORQUE. CARE SHALL BE TAKEN TO AVOID OVERTIGHTING.

SECTION	DIMENSION (INCH)	BASE CONNECTION DATA										SLIP PLATE & HINGE PLATE DATA										FOOTING DATA				
		BOLT SIZE & TORQUE LIMITS		A	B	C	D	E	t ₁	R	W	W (ALT.) SEE NOTE	F	G	H	J	K	K ₁	L	M	t ₂	R ₂	H.S. BOLT DIA.	STUB LTH.	FTG. DIA.	LTH. OF FTG.
W6x12	5/8" ϕ T = 226-345	4	10	3/4	2	1	1 1/2	11/32	5/16	5/16	3 5/8	4	2 1/4	7/8	1	1 1/4	5/8	4 1/4	3/8	9/32	1/2	24	24	48	#5	0.46
W8x18		5 1/4	12	3/4	3	1 1/8	1 1/2	11/32	5/16	5/16	4 7/8	5 1/4	2 3/4	1 1/4	1 1/8	1 3/8	3/4	4 3/4	1/2	11/32	5/8	24	24	60	#6	0.58
W8x24	3/4" ϕ T = 369-554	6 1/2	12 1/2	7/8	3 1/4	1 5/8	1 3/4	13/32	3/8	7/16	4 7/8	6 1/2	3 1/2	1 1/2	1 1/8	1 3/8	3/4	4 3/4	1/2	11/32	5/8	30	24	72	#7	0.70
W10x33	1" ϕ T = 460-735	8	15 1/2	1 1/4	4 1/2	1 3/4	2	17/32	3/8	7/16	4 5/8	8	5 1/2	1 1/4	1 1/4	1 1/2	7/8	5 1/4	5/8	13/32	3/4	30	24	96	#9	0.93
W12x40		8	17 1/2	1 1/4	4 1/2	1 3/4	2	17/32	3/8	7/16	4 5/8	8	5 1/2	1 1/4	1 1/4	1 1/2	7/8	5 1/4	5/8	13/32	3/4	36	24	120	#10	1.16
W12x45		10	17 1/2	1 1/4	6	2	2	17/32	3/8	7/16	5 1/2	10	5 1/2	2 1/4	1 1/2	1 3/4	1	6 1/4	3/4	1 1/32	7/8	36	36	96	#9	2.09

* BASE PLATE TO POST WELD ALTERNATE (AS AN ALTERNATE TO WELDS SHOWN IN DETAILS, THE POST MEMBERS TABULATED MAY BE WELDED ALL AROUND WITH A FILLET WELD W(ALT.)) ALL BOLTS SHALL HAVE A MINIMUM OF 3 THREADS BEYOND THE NUT. BOLT TORQUE LIMITS ARE IN INCH POUNDS. (THE HIGH STRENGTH BOLTS AT THE BASE CONNECTION SHOULD BE TORQUED WITHIN THE LIMITS SPECIFIED, HOWEVER, THE LOWER LIMIT IS DESIRABLE). FOR NON-BREAKAWAY USE TORQUE LIMITS GIVEN IN THE STANDARD SPECIFICATIONS

SHEET NUMBER

DESIGN: K. BRAUNER, C. GUIDRY
 CHECK: C. GUIDRY
 PARISH: CONTROL SECTION
 STATE: PROJECT
 REVIEW: C. BOURGEOIS
 SERIES: 9 OF 17

APPROVED BY CHIEF ENGINEER: [Signature] DATE: 10/14/2025

REVISION OR CHANGE ORDER DESCRIPTION

NO. DATE

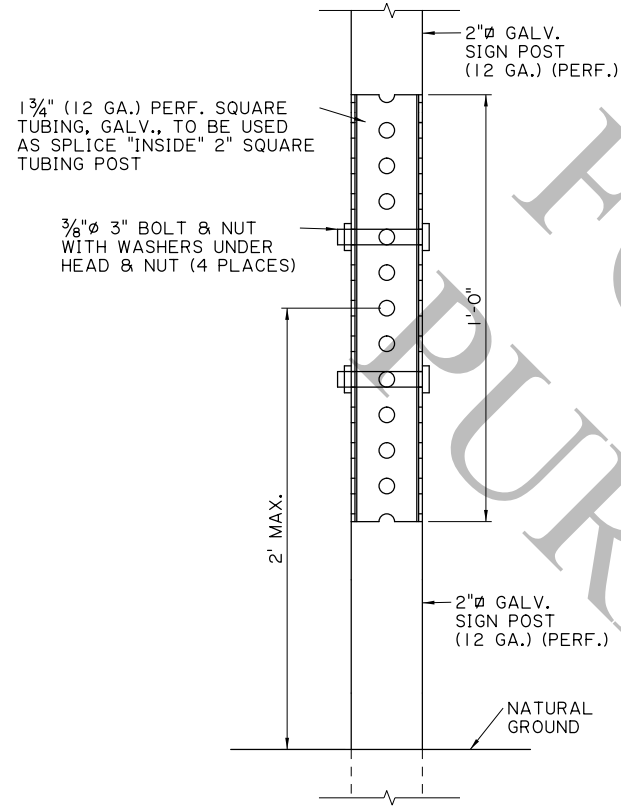
ROADSIDE MOUNTED SIGN DETAILS (TYPE D SIGNS)

ROADSIDE SIGNING STANDARDS

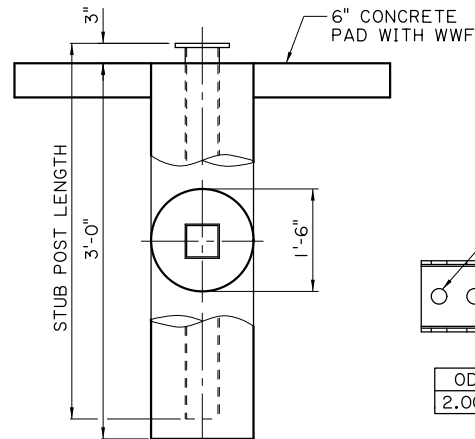
LOUISIANA DEPARTMENT OF TRANSPORTATION & DEVELOPMENT

STANDARD PLAN

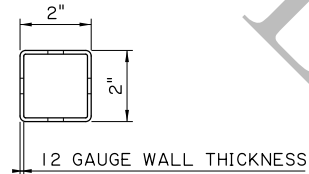
9/10/2025



SPLICE JOINT FOR SIGN 2" POST

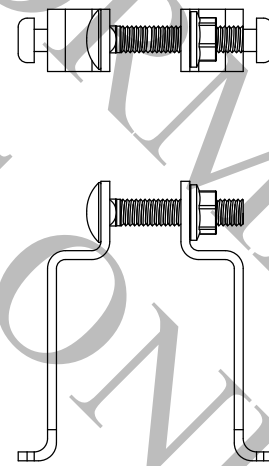


FOOTING DETAIL SQ. TUBE SECTIONS



2" SQUARE TUBING

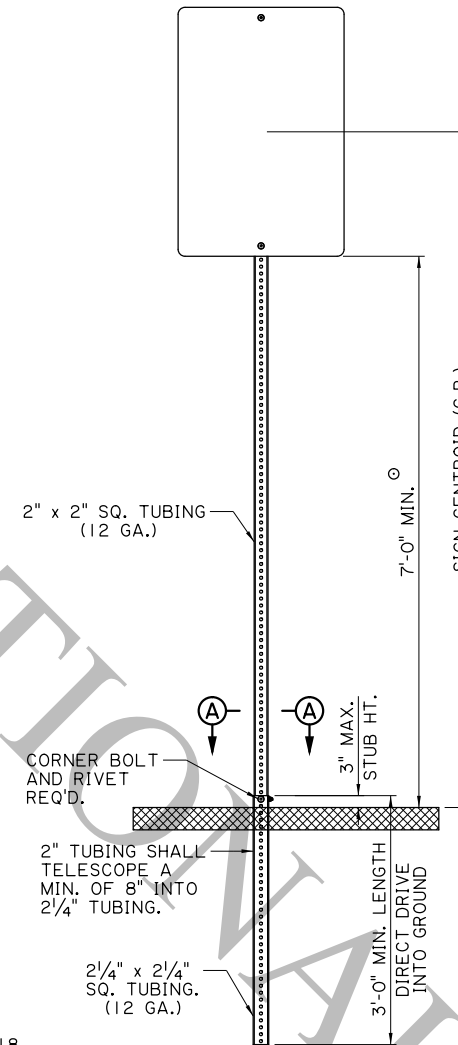
OD	GAUGE	WALL	WEIGHT PER FOOT
2.00"	12GA	0.105"	2.459#



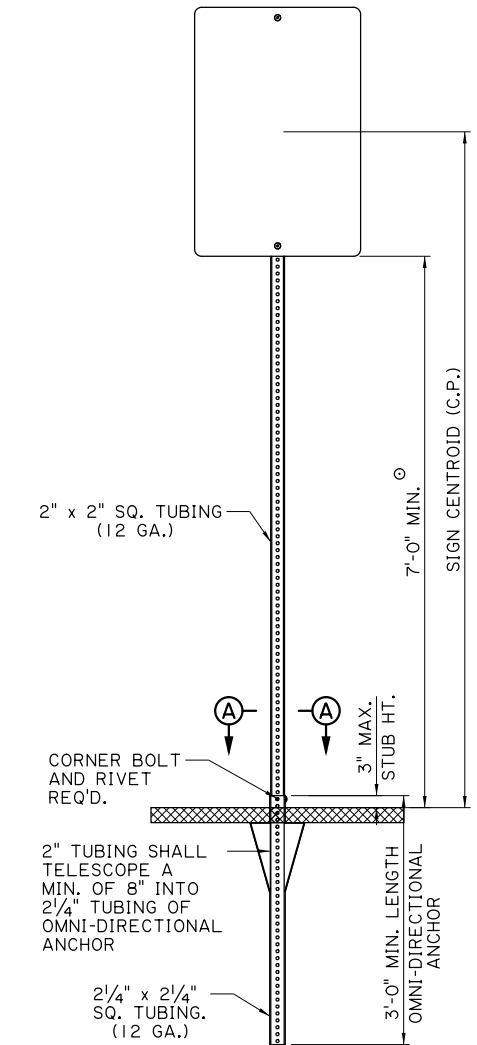
SIGN CLAMP FOR SQUARE POSTS

7/8" WIDE X 11GA. TYPE 304, #2B FINISHED STAINLESS STEEL INCLUDES 3/8" - 16 X 2" CARRIAGE BOLT AND CASE HARDENED FLANGE NUT.

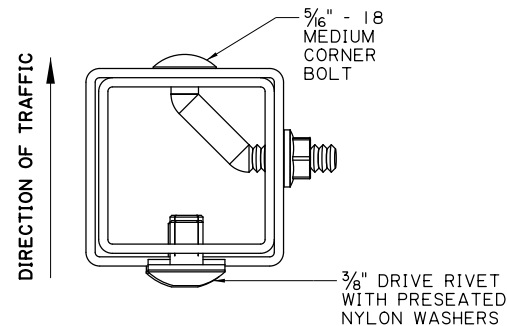
SIGN CENTROID (CP)	ALLOWABLE SIGN AREA (FT ²)			
	70 MPH + 30% GUST		80 MPH + 30% GUST	
	SINGLE POST (2" x 12GA PERF.)	DOUBLE POST (2" x 12GA PERF.)	SINGLE POST (2" x 12GA PERF.)	DOUBLE POST (2" x 12GA PERF.)
14'	3.99	7.98	2.99	5.97
13.5'	4.14	8.28	3.10	6.19
13'	4.30	8.59	3.21	6.43
12.5'	4.47	8.93	3.34	6.68
12'	4.65	9.30	3.48	6.96
11.5'	4.85	9.70	3.63	7.26
11'	5.07	10.14	3.79	7.59
10.5'	5.31	10.62	3.97	7.95
10'	5.57	11.15	4.17	8.34
9.5'	5.86	11.73	4.39	8.77
9'	6.19	12.37	4.63	9.26
8.5'	6.55	13.09	4.90	9.79
8'	6.95	13.90	5.20	10.40
7.5'	7.41	14.81	5.54	11.08
7'	7.93	15.86	5.93	11.86



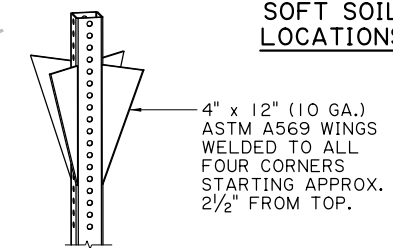
HARD SOIL LOCATIONS



SOFT SOIL LOCATIONS



SECTION A-A



OMNI-DIRECTIONAL ANCHOR

NOTES:

SEE 1015.2 IN THE STANDARD SPECIFICATIONS FOR INFORMATION RELATED TO THE ALLOWABLE MATERIALS.

SIGNS MOUNTED TO SINGLE SQUARE TUBE POSTS DO NOT REQUIRE STIFFENERS UNLESS THE SIGN HAS AT LEAST ONE SIDE GREATER THAN 36" LONG.

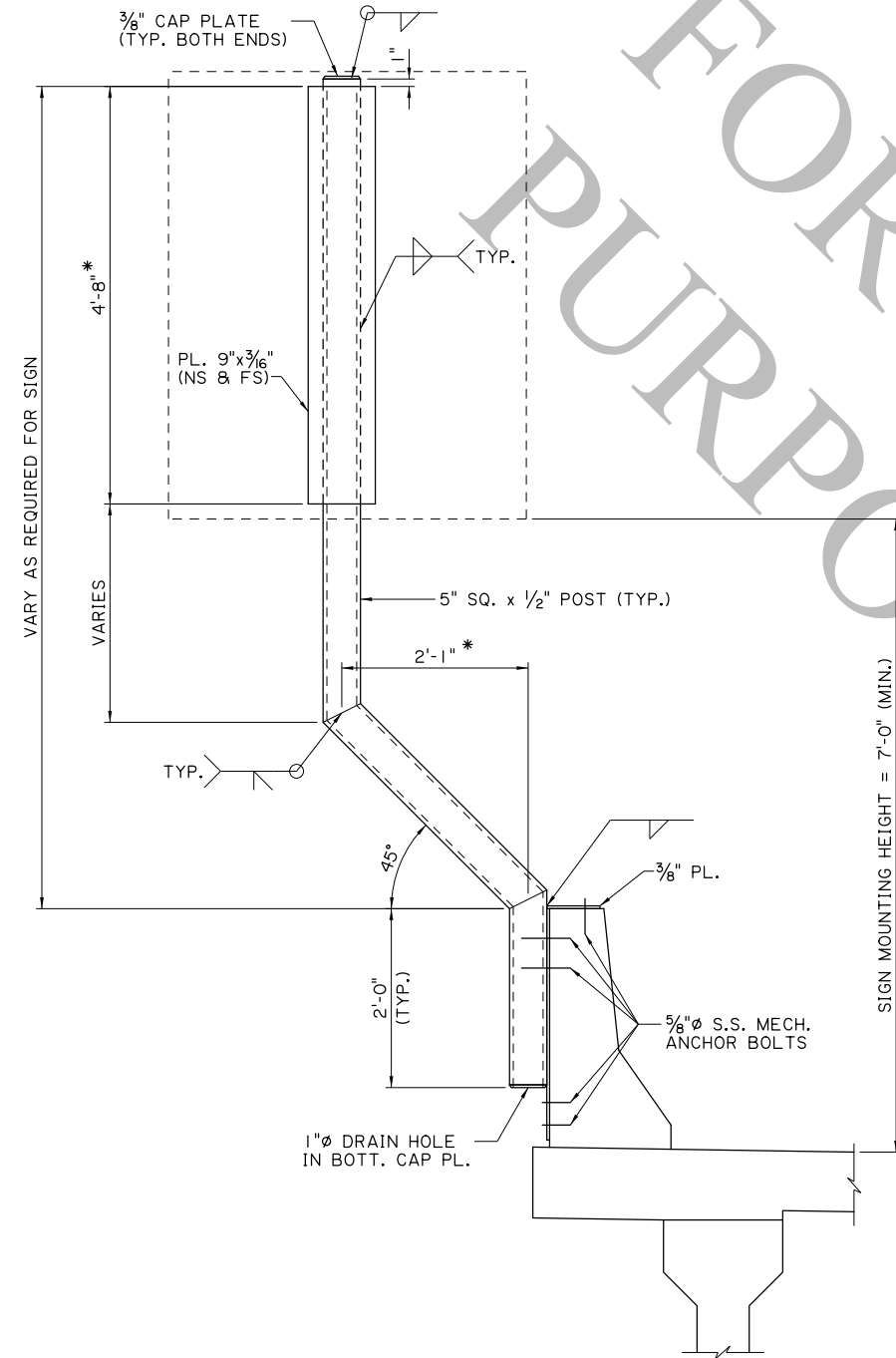
FOR DUAL POSTS, LOCATE POSTS AT 58% SPACING FROM CENTER OF SIGN, OR 21% FROM EACH EDGE OF SIGN. USE STIFFENERS ON BACK OF SIGNS MOUNTED ON DUAL POSTS.

SIGNS MAY BE MOUNTED BACK TO BACK ON THE POST.

○ MOUNTING HEIGHT SHALL BE 7'-0" MIN. UNLESS OTHERWISE NOTED ON THE SIGN SUMMARY SHEET. CHEVRON SIGNS (WI-8) MAY BE INSTALLED AT 4'-0" OR HIGHER.

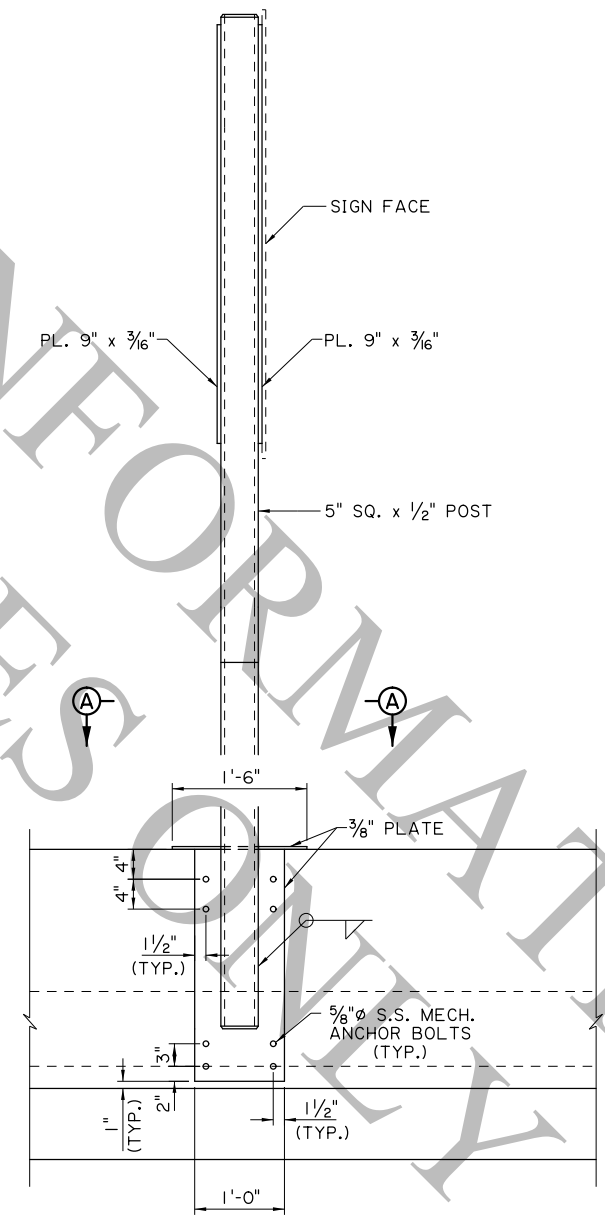
SHEET NUMBER		PARISH		CONTROL SECTION		STATE PROJECT	
DESIGN	K. BRAUNER	CHECK	C. GUIDRY	DETAIL	K. BRAUNER	CHECK	C. GUIDRY
APPROVED BY CHIEF ENGINEER:				DATE: 10/14/2025			
SIGNATURE				REVISION OR CHANGE ORDER DESCRIPTION			
NO.				DATE			
SQUARE TUBE SIGN DETAILS							
ROADSIDE SIGNING STANDARDS							
STANDARD PLAN							

9/10/2025

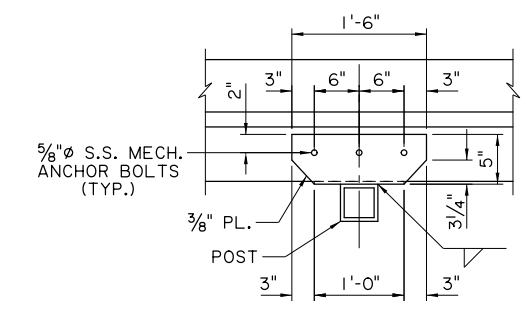


OFFSET SIGN SUPPORT

* DIMENSIONS ARE BASED ON A 5 FT. x 4 FT. SIGN. ADJUST AS NEEDED FOR DIFFERENT SIGN SIZES.



OUTSIDE ELEVATION SHOWING BARRIER
(TYPICAL INSTALLATION)



SECTION A-A

NOTES:

STRUCTURAL MEMBERS SHALL BE AASHTO M270 GRADE 50 STEEL AND SHALL BE HOT DIPPED GALVANIZED PER ASTM A-123.

MECHANICAL ANCHOR BOLTS SHALL BE 5/8" STAINLESS STEEL (MIN. F_y = 55 ksi) AND SHALL BE SELECTED FROM THE A.M.L. AND INSTALLED AS PER THE MANUFACTURER'S RECOMMENDATIONS. EACH ANCHOR SHALL HAVE AN ALLOWABLE CAPACITY OF 3 KIPS PULLOUT AND 3 KIPS SHEAR AFTER APPLICATION OF ANY REDUCTION FACTORS FOR ANCHOR SPACING AND EDGE DISTANCE.

WELDING SHALL BE IN ACCORDANCE WITH THE BRIDGE WELDING CODE OF THE AMERICAN WELDING SOCIETY (AWS D1.5-10), AND SECTION 809 OF THE LOUISIANA STANDARD SPECIFICATIONS FOR ROADS AND BRIDGES, 2016 EDITION.

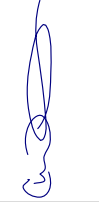


NO PART OF ANY SIGN SHALL PROTRUDE INTO THE SHOULDER AREA. DIMENSIONS OF SUPPORT POST AND BRACKET SHALL BE ADJUSTED AS NEEDED PRIOR TO FABRICATION.

ANY PORTIONS OF THE EXISTING BARRIER THAT ARE DAMAGED SHALL BE REPAIRED TO THE SATISFACTION OF THE PROJECT ENGINEER.

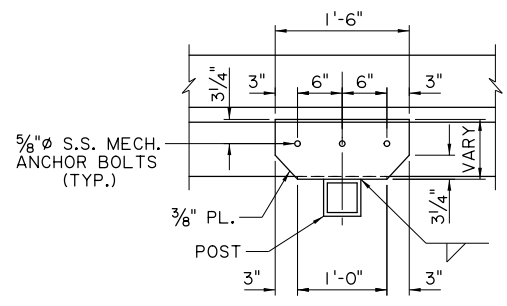
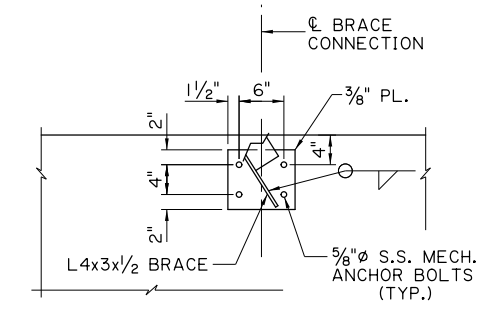
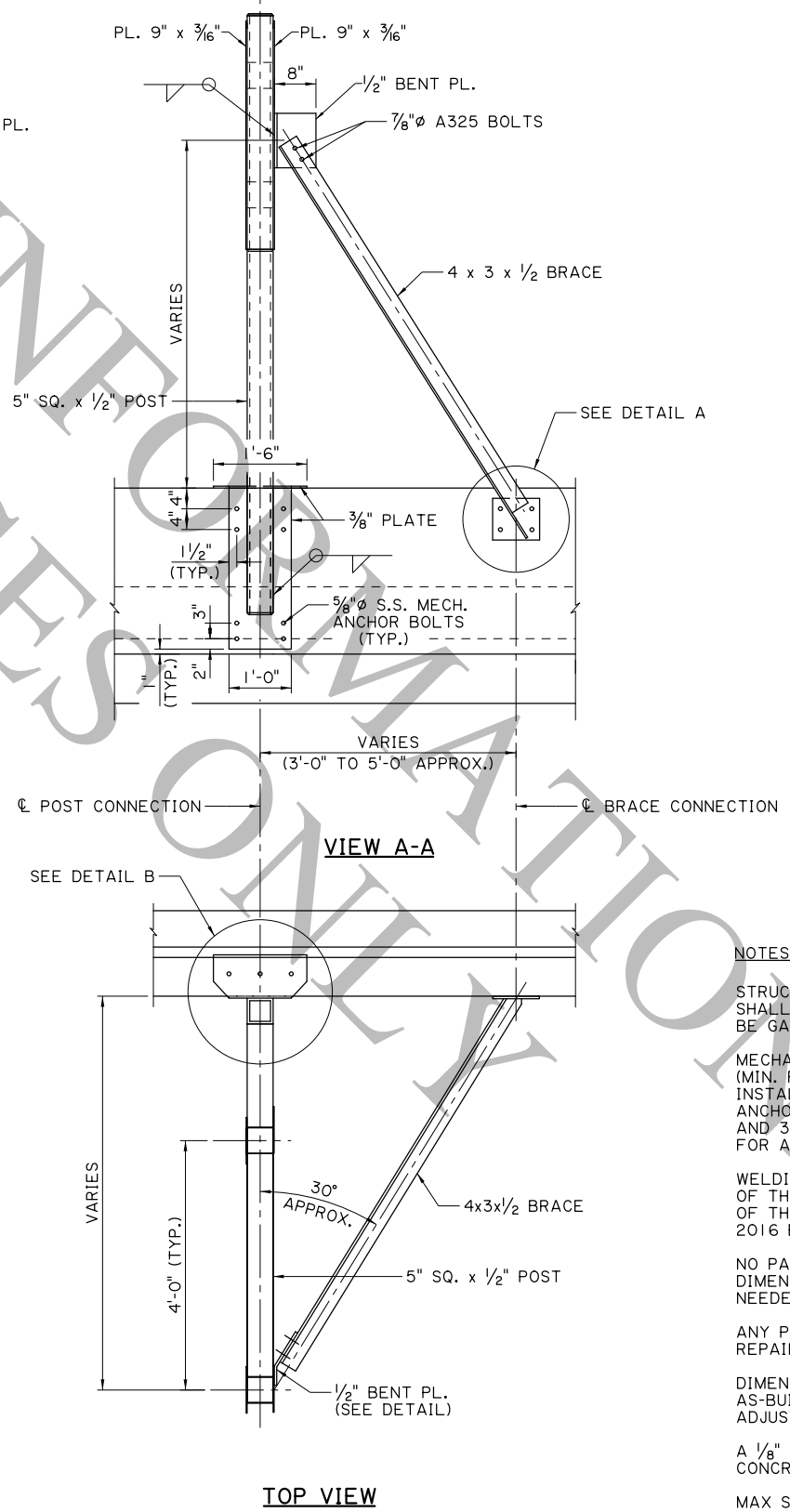
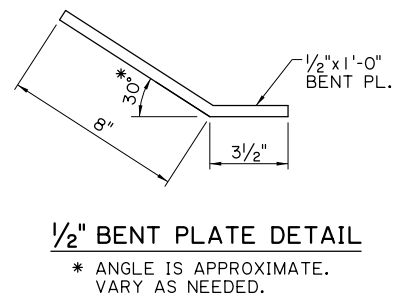
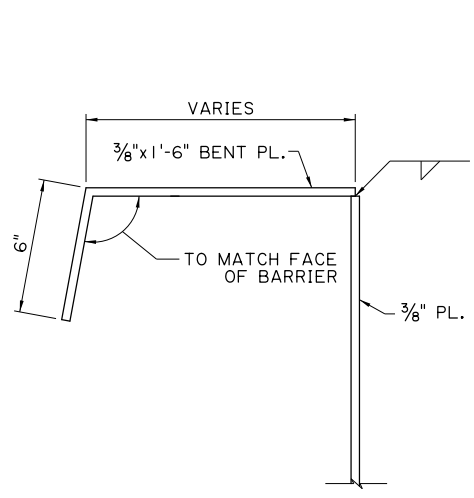
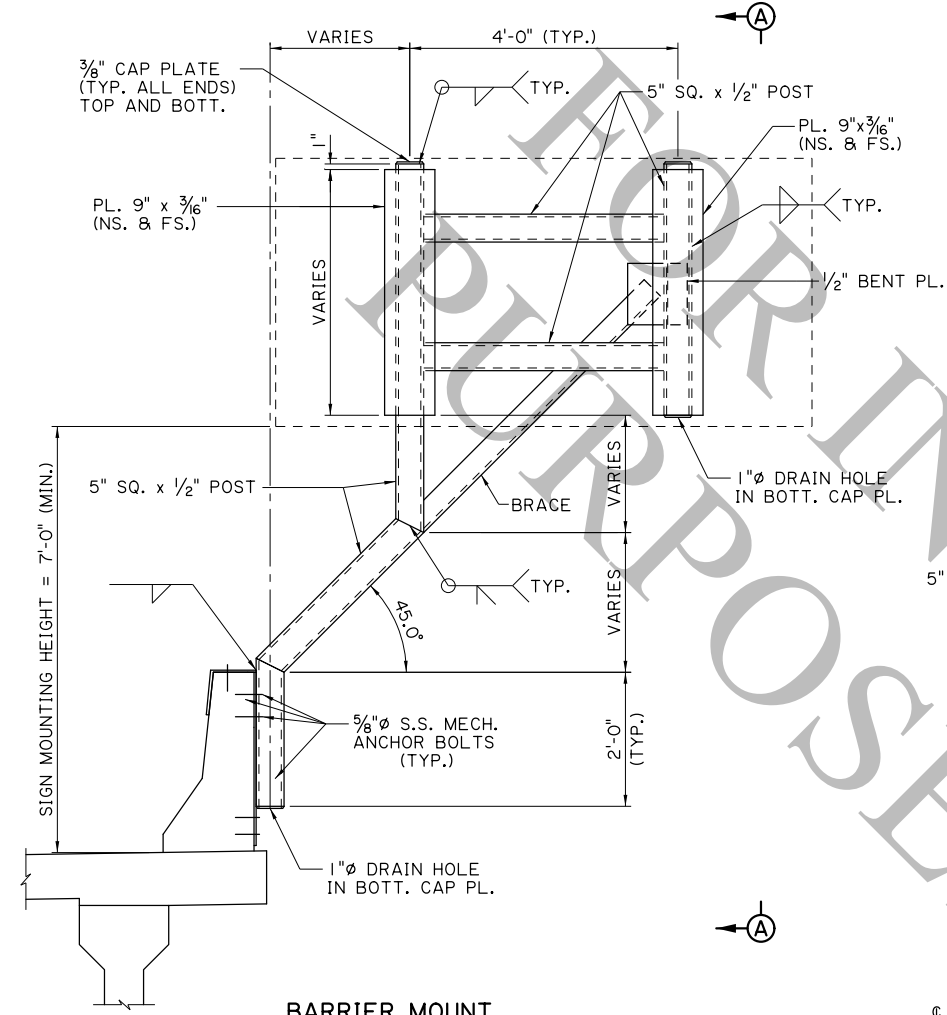
DIMENSIONS RELATED TO THE BARRIER CONNECTION ARE BASED ON AS-BUILT DRAWINGS AND PREVIOUS STANDARDS. DIMENSIONS SHALL BE ADJUSTED AS NEEDED BASED ON FIELD MEASUREMENTS.

A 1/8" NEOPRENE PAD SHALL BE USED BETWEEN ALL STEEL AND CONCRETE CONTACT SURFACES.

MAX SIGN AREA = 20 SQFT.

SHEET NUMBER		PARISH		CONTROL SECTION		STATE PROJECT	
DESIGN	K. BRAUNER	CHECK	C. GUIDRY	REVIEW	C. GUIDRY	DATE	10/14/2025
APPROVED BY CHIEF ENGINEER: 							
REVISION OR CHANGE ORDER DESCRIPTION							
NO. DATE							
							
Z - BRACKET SIGN SUPPORT (F - SHAPE BARRIER)							
ROADSIDE SIGNING STANDARDS							
							
STANDARD PLAN							

9/10/2025



NOTES:

STRUCTURAL MEMBERS SHALL BE AASHTO M270 GRADE 50 STEEL AND SHALL BE HOT DIPPED GALVANIZED PER ASTM A-123. A325 BOLTS TO BE GALVANIZED PER ASTM A-153.

MECHANICAL ANCHOR BOLTS SHALL BE 5/8" STAINLESS STEEL (MIN. F_y = 55 ksi) AND SHALL BE SELECTED FROM THE A.M.L. AND INSTALLED AS PER THE MANUFACTURER'S RECOMMENDATIONS. EACH ANCHOR SHALL HAVE AN ALLOWABLE CAPACITY OF 3 KIPS PULLOUT AND 3 KIPS SHEAR AFTER APPLICATION OF ANY REDUCTION FACTORS FOR ANCHOR SPACING AND EDGE DISTANCE.

WELDING SHALL BE IN ACCORDANCE WITH THE BRIDGE WELDING CODE OF THE AMERICAN WELDING SOCIETY (AWS D1.5-10), AND SECTION 809 OF THE LOUISIANA STANDARD SPECIFICATIONS FOR ROADS AND BRIDGES, 2016 EDITION.

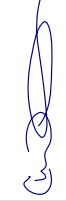


NO PART OF ANY SIGN SHALL PROTRUDE INTO THE SHOULDER AREA. DIMENSIONS OF SUPPORT POST AND BRACKET SHALL BE ADJUSTED AS NEEDED PRIOR TO FABRICATION.

ANY PORTIONS OF THE EXISTING BARRIER THAT ARE DAMAGED SHALL BE REPAIRED TO THE SATISFACTION OF THE PROJECT ENGINEER.

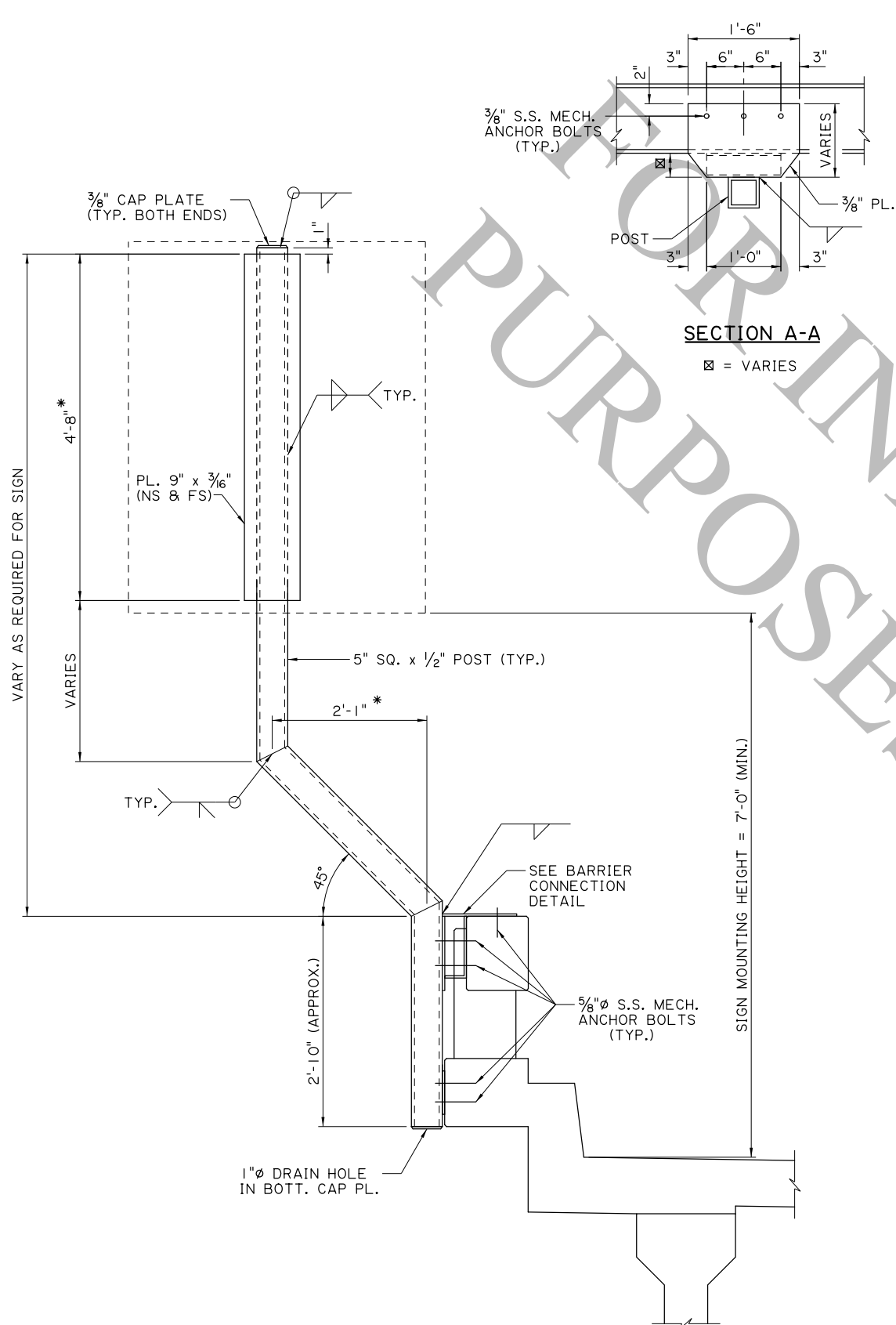
DIMENSIONS RELATED TO THE BARRIER CONNECTION ARE BASED ON AS-BUILT DRAWINGS AND PREVIOUS STANDARDS. DIMENSIONS SHALL BE ADJUSTED AS NEEDED BASED ON FIELD MEASUREMENTS.

A 1/8" NEOPRENE PAD SHALL BE USED BETWEEN ALL STEEL AND CONCRETE CONTACT SURFACES.

MAX SIGN AREA = 40 SQFT.

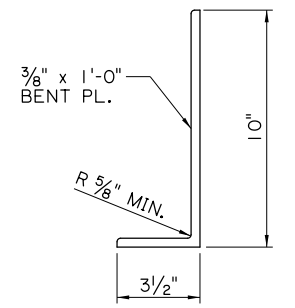
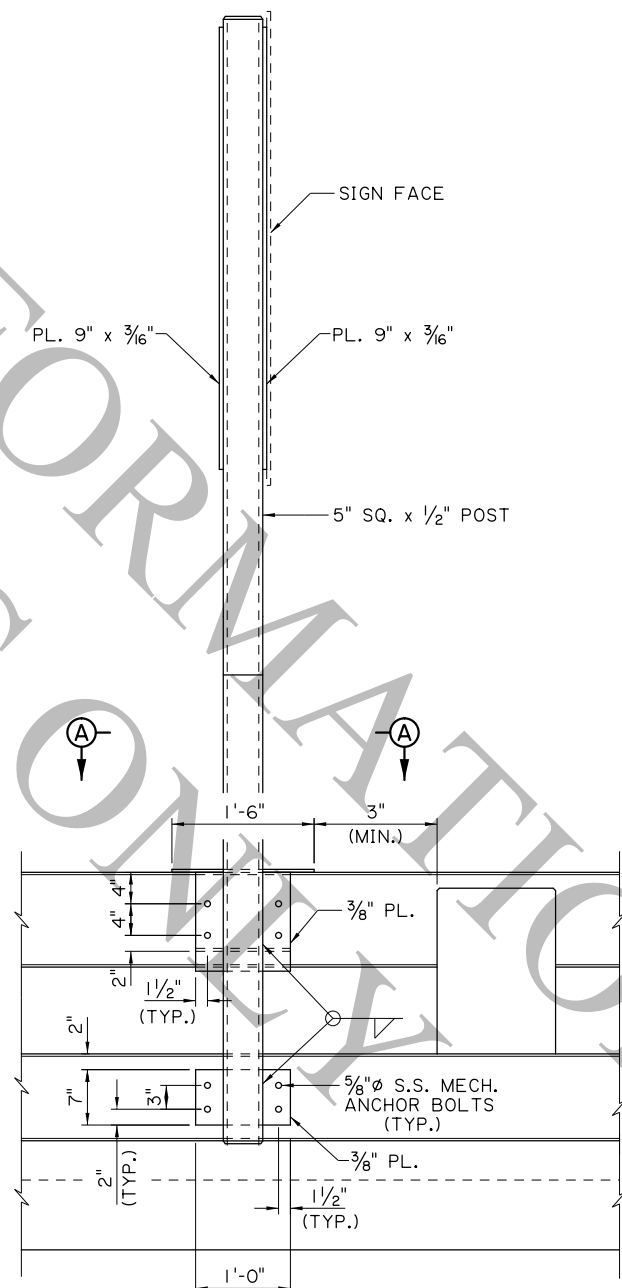
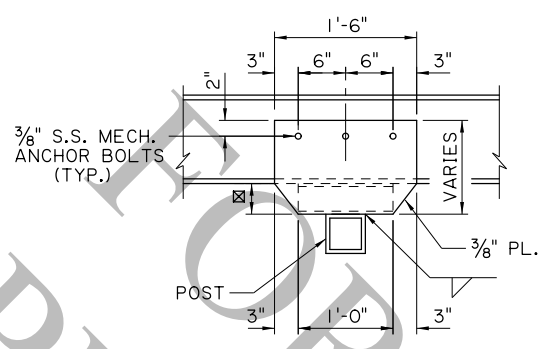
SHEET NUMBER		PARISH		CONTROL SECTION		STATE PROJECT	
DESIGN	K. BRAUNER	CHECK	C. GUIDRY	DESIGN	K. BRAUNER	CHECK	C. GUIDRY
APPROVED BY CHIEF ENGINEER:				REVISION OR CHANGE ORDER DESCRIPTION		DATE	
				NO.		DATE	
				BY		DATE	
							
Z - BRACKET SIGN SUPPORTS (F - SHAPE BARRIER)							
ROADSIDE SIGNING STANDARDS							
							
STANDARD PLAN							

9/10/2025

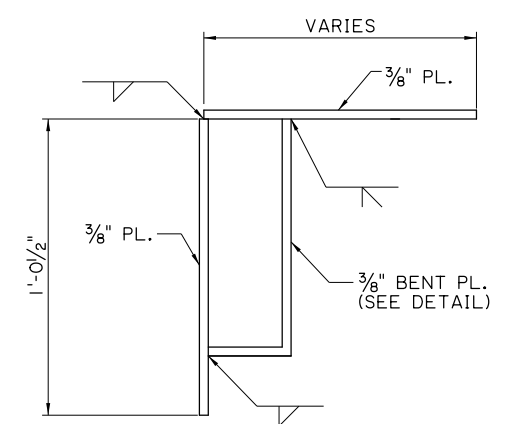


OFFSET SIGN SUPPORT

* DIMENSIONS ARE BASED ON A 5 FT. x 4 FT. SIGN. ADJUST AS NEEDED FOR DIFFERENT SIGN SIZES.



3/8" BENT PL. DETAIL

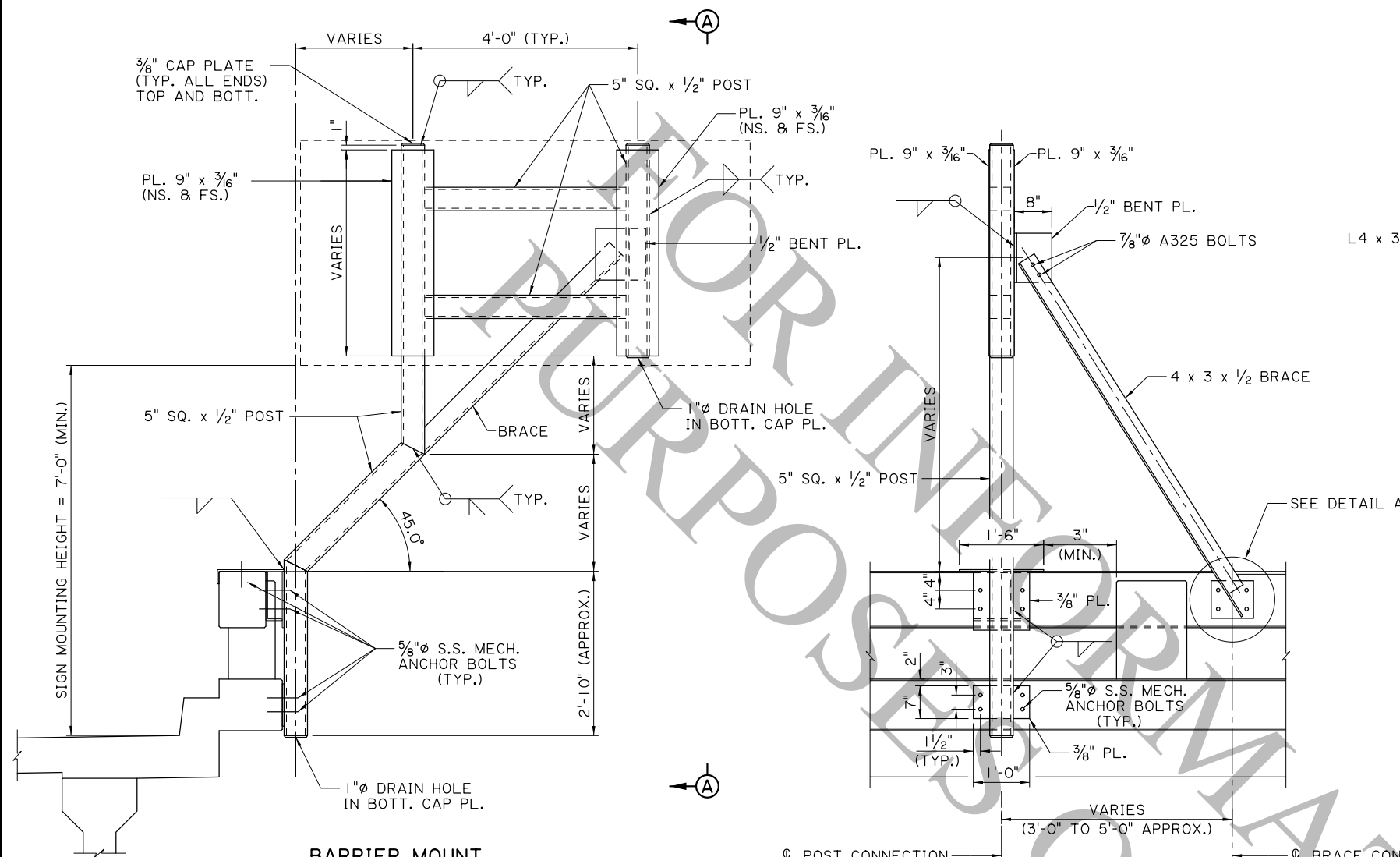


NOTES:

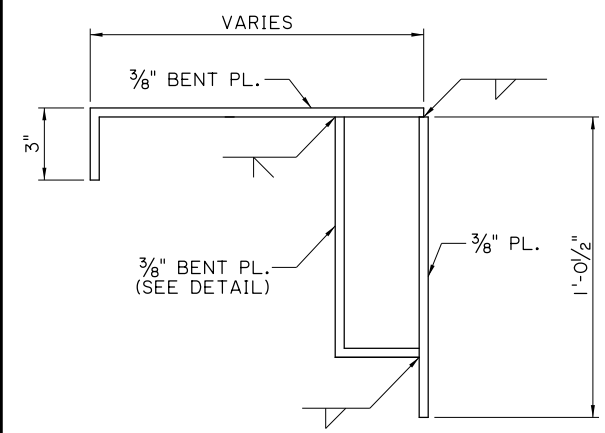
- STRUCTURAL MEMBERS SHALL BE AASHTO M270 GRADE 50 STEEL AND SHALL BE HOT DIPPED GALVANIZED PER ASTM A-123.
- MECHANICAL ANCHOR BOLTS SHALL BE 5/8"Ø STAINLESS STEEL (MIN. F_y = 55 ksi) AND SHALL BE SELECTED FROM THE A.M.L. AND INSTALLED AS PER THE MANUFACTURER'S RECOMMENDATIONS. EACH ANCHOR SHALL HAVE AN ALLOWABLE CAPACITY OF 3 KIPS PULLOUT AND 3 KIPS SHEAR AFTER APPLICATION OF ANY REDUCTION FACTORS FOR ANCHOR SPACING AND EDGE DISTANCE.
- WELDING SHALL BE IN ACCORDANCE WITH THE BRIDGE WELDING CODE OF THE AMERICAN WELDING SOCIETY (AWS D1.5-10), AND SECTION 809 OF THE LOUISIANA STANDARD SPECIFICATIONS FOR ROADS AND BRIDGES, 2016 EDITION.
- NO PART OF ANY SIGN SHALL PROTRUDE INTO THE SHOULDER AREA. DIMENSIONS OF SUPPORT POST AND BRACKET SHALL BE ADJUSTED AS NEEDED PRIOR TO FABRICATION.
- ANY PORTIONS OF THE EXISTING BARRIER THAT ARE DAMAGED SHALL BE REPAIRED TO THE SATISFACTION OF THE PROJECT ENGINEER.
- DIMENSIONS RELATED TO THE BARRIER CONNECTION ARE BASED ON AS-BUILT DRAWINGS AND PREVIOUS STANDARDS. DIMENSIONS SHALL BE ADJUSTED AS NEEDED BASED ON FIELD MEASUREMENTS.
- A 1/8" NEOPRENE PAD SHALL BE USED BETWEEN ALL STEEL AND CONCRETE CONTACT SURFACES.
- MAX SIGN AREA = 20 SQFT.

SHEET NUMBER		PARISH		CONTROL SECTION		STATE PROJECT	
DESIGN	K. BRAUNER	CHECK	C. GUIDRY	DESIGN	K. BRAUNER	CHECK	C. GUIDRY
APPROVED BY CHIEF ENGINEER:				DATE: 10/14/2025			
REVISION OR CHANGE ORDER DESCRIPTION							
NO. DATE							
Z - BRACKET SIGN SUPPORT (POST AND RAIL BARRIER)							
ROADSIDE SIGNING STANDARDS							
STANDARD PLAN							

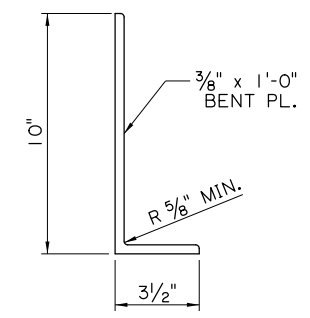
9/10/2025



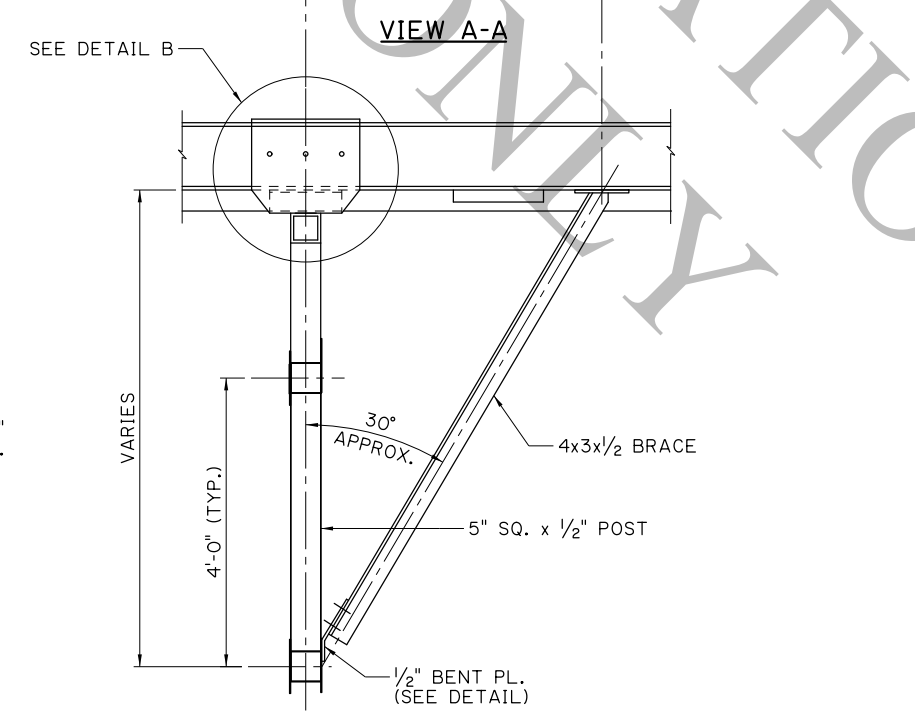
BARRIER MOUNT



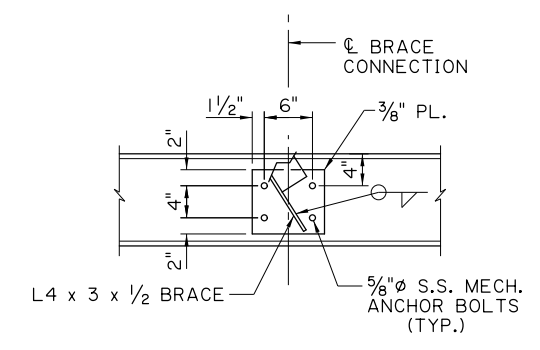
BARRIER CONNECTION DETAIL



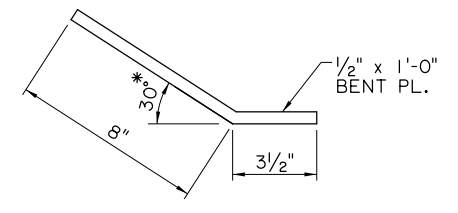
3/8" BENT PL. DETAIL



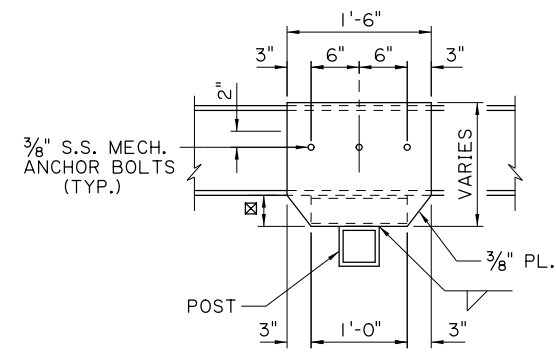
TOP VIEW



DETAIL A



1/2" BENT PLATE DETAIL
* ANGLE IS APPROXIMATE. VARY AS NEEDED.



DETAIL B

☒ = VARIES

NOTES:

STRUCTURAL MEMBERS SHALL BE AASHTO M270 GRADE 50 STEEL AND SHALL BE HOT DIPPED GALVANIZED PER ASTM A-123. A325 BOLTS TO BE GALVANIZED PER ASTM A-153.

MECHANICAL ANCHOR BOLTS SHALL BE 5/8"Ø STAINLESS STEEL (MIN. F_y = 55 ksi) AND SHALL BE SELECTED FROM THE A.M.L. AND INSTALLED AS PER THE MANUFACTURER'S RECOMMENDATIONS. EACH ANCHOR SHALL HAVE AN ALLOWABLE CAPACITY OF 3 KIPS PULLOUT AND 3 KIPS SHEAR AFTER APPLICATION OF ANY REDUCTION FACTORS FOR ANCHOR SPACING AND EDGE DISTANCE.

WELDING SHALL BE IN ACCORDANCE WITH THE BRIDGE WELDING CODE OF THE AMERICAN WELDING SOCIETY (AWS D1.5-10), AND SECTION 809 OF THE LOUISIANA STANDARD SPECIFICATIONS FOR ROADS AND BRIDGES, 2016 EDITION.

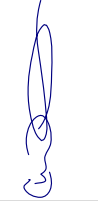


NO PART OF ANY SIGN SHALL PROTRUDE INTO THE SHOULDER AREA. DIMENSIONS OF SUPPORT POST AND BRACKET SHALL BE ADJUSTED AS NEEDED PRIOR TO FABRICATION.

ANY PORTIONS OF THE EXISTING BARRIER THAT ARE DAMAGED SHALL BE REPAIRED TO THE SATISFACTION OF THE PROJECT ENGINEER.

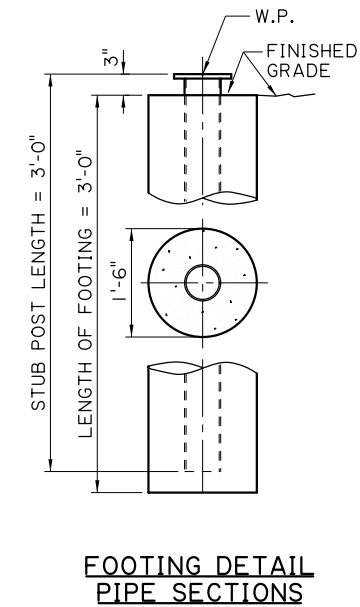
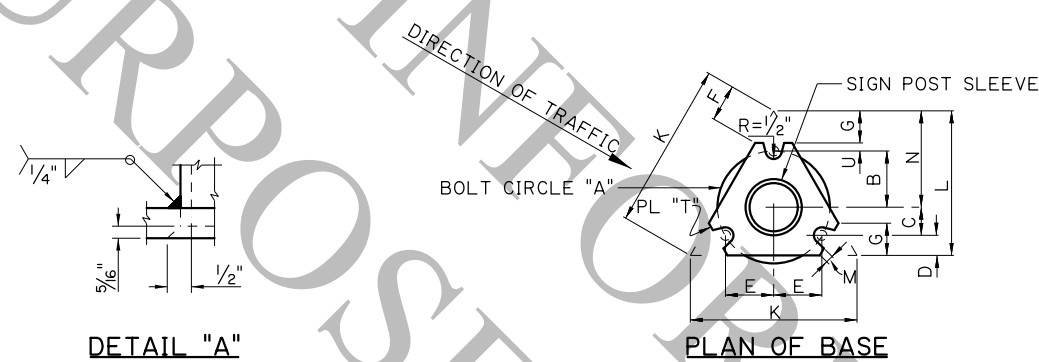
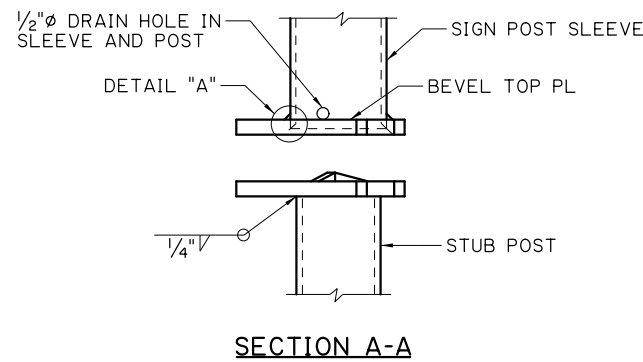
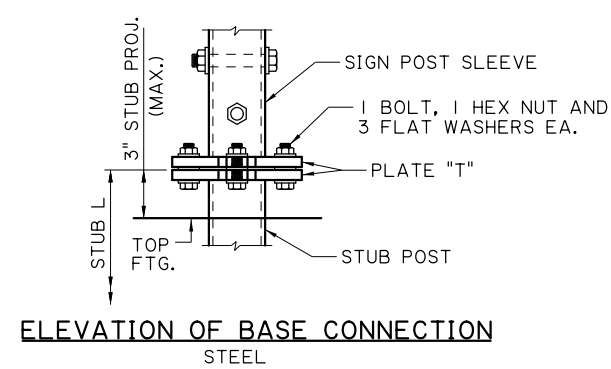
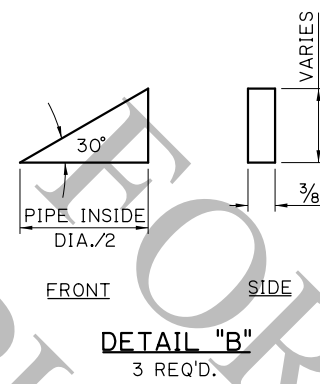
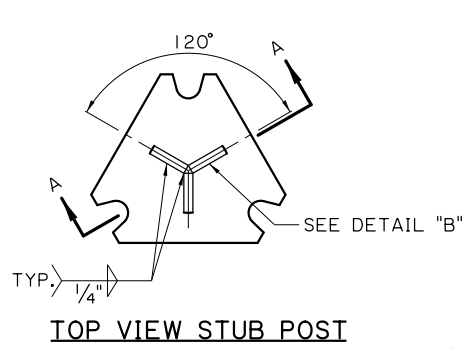
DIMENSIONS RELATED TO THE BARRIER CONNECTION ARE BASED ON AS-BUILT DRAWINGS AND PREVIOUS STANDARDS. DIMENSIONS SHALL BE ADJUSTED AS NEEDED BASED ON FIELD MEASUREMENTS.

A 1/8" NEOPRENE PAD SHALL BE USED BETWEEN ALL STEEL AND CONCRETE CONTACT SURFACES.

MAX SIGN AREA = 40 SQFT.

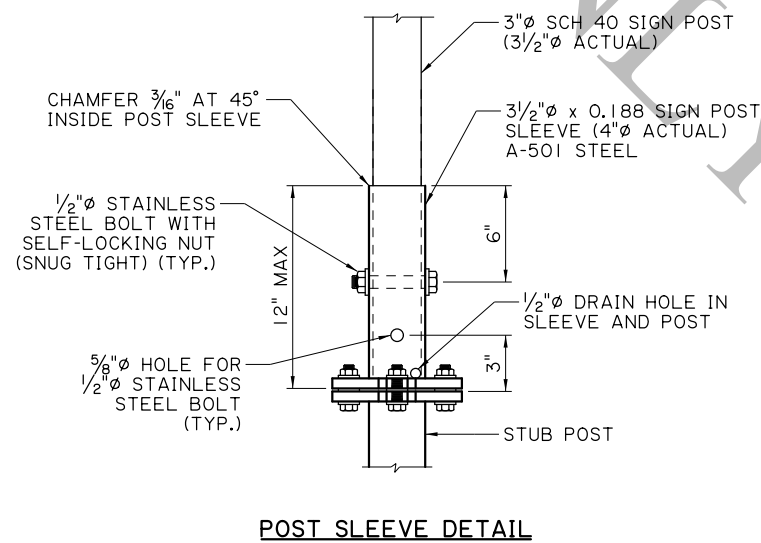
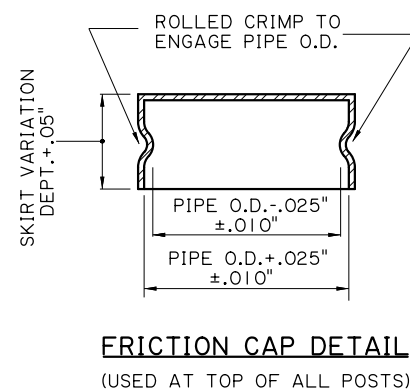
SHEET NUMBER		PARISH		CONTROL SECTION		STATE PROJECT	
DESIGN	K. BRAUNER	CHECK	C. GUIDRY	REVIEW	C. GUIDRY	DATE	10/14/2025
APPROVED BY CHIEF ENGINEER: 							
REVISION OR CHANGE ORDER DESCRIPTION							
NO. DATE							
							
Z - BRACKET SIGN SUPPORT (POST AND RAIL BARRIER)							
ROADSIDE SIGNING STANDARDS							
							
STANDARD PLAN							

9/10/2025



STEEL MULTI-DIRECTIONAL BASE CONNECTION DATA															
NOMINAL PIPE SIZE FOR POST SLEEVE	BOLT SIZE & TORQUE	WELD SIZE	T	A	B	C	D	E	F	G	K	L	M	N	U
3/2" SCH 40	5/8" T=226	3/8"	5/8"	7"	3/2"	1 3/4"	1 1/4"	3"	2 5/16"	2"	10 3/8"	9"	1/2"	6"	1/2"

FOR STUB POST LENGTH & FOOTING DIMENSION SEE FOOTING DETAIL.
 O TORQUE IN INCH-LBS., BOLTS ARE HIGH STRENGTH



PROCEDURE FOR ASSEMBLY OF BASE CONNECTION:

SPECIAL CARE SHALL BE TAKEN TO SET THE BASE PLUMB TO AVOID EXCESSIVE SHIMMING AT THE BREAK-AWAY FEATURE AFTER FINAL INSTALLATION. EXCESSIVE SHIMMING COULD IMPAIR THE BREAK-AWAY FEATURE FOR WHICH THIS INSTALLATION WAS DESIGNED. SHIM PACKS SHOWN ON THIS DRAWING SHOULD BE SUFFICIENT TO ALLOW FOR NORMAL MISALIGNMENT.

1. BASE SHALL BE ALIGNED AND SET PLUMB BEFORE OR IMMEDIATELY AFTER POURING CONCRETE FOOTING.
2. H.S. BOLTS IN BASE PLATE SHALL BE TIGHTENED TO THE PRESCRIBED TORQUE. CARE SHALL BE TAKEN TO AVOID OVERTIGHTING.

FRICTION CAPS:

CAPS MAY BE MANUFACTURED FROM EITHER HOT ROLLED OR COLD ROLLED STEEL SHEETS. THE MINIMUM SHEET METAL THICKNESS SHALL BE 24 GAUGE. THE RIM EDGES SHALL BE REASONABLY STRAIGHT AND SMOOTH. CAPS SHALL BE SIZED AND FORMED IN SUCH A MANNER AS TO PRODUCE A DRIVE-ON FRICTION FIT AND HAVE NO TENDENCY TO ROCK WHEN SEATED ON THE PIPE. THE DEPTH SHALL BE SUFFICIENT TO GIVE POSITIVE PROTECTION AGAINST ENTRANCE OF RAINWATER. THEY SHALL BE FREE OF SHARP CREASES OR INDENTATIONS AND SHOW NO EVIDENCE OF METAL FRACTURE. CAPS SHALL HAVE A ELECTRODEPOSITED COATING OF ZINC IN ACCORDANCE WITH THE REQUIREMENTS OF A.S.T.M. SPECIFICATION B633 SC4, TYPE 1.

GALVANIZING:

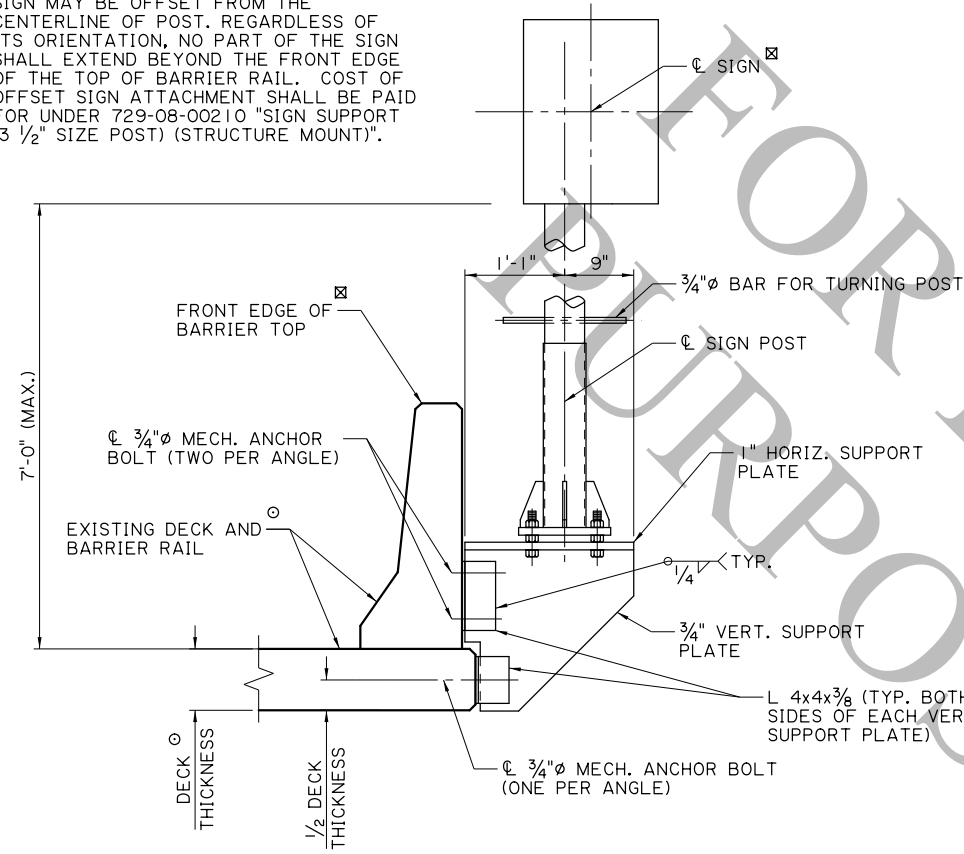
ALL STEEL POST, PLATE, AND SLEEVE MEMBERS SHALL BE GALVANIZED PER ASTM A-123.

ALL MISC. HARDWARE (EXCEPT FOR STAINLESS STEEL BOLTS) SHALL BE GALVANIZED PER ASTM A-153.

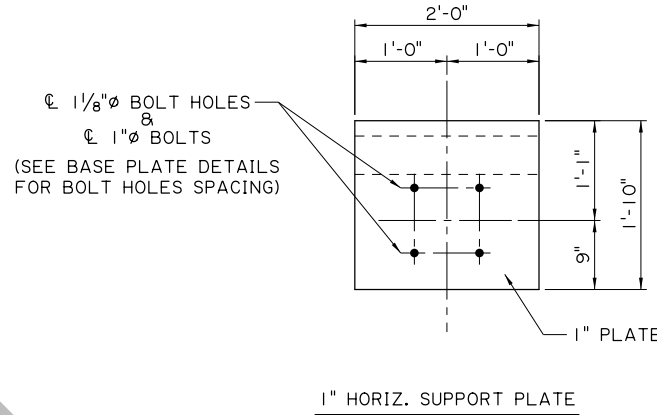
SHEET NUMBER	PARISH	CONTROL SECTION	STATE PROJECT
DESIGN: K. BRAUNER	CHECK: C. GUIDRY	DETAIL: K. BRAUNER	CHECK: C. GUIDRY
REVIEW: C. BOURGEOIS	SERIES # 15 OF 17		
APPROVED BY CHIEF ENGINEER:	DATE: 10/14/2025		
REVISION OR CHANGE ORDER DESCRIPTION			
NO. DATE			
CONTRAFLOW SIGNS (GROUND MOUNTED)			
ROADSIDE SIGNING STANDARDS			
STANDARD PLAN			

9/10/2025

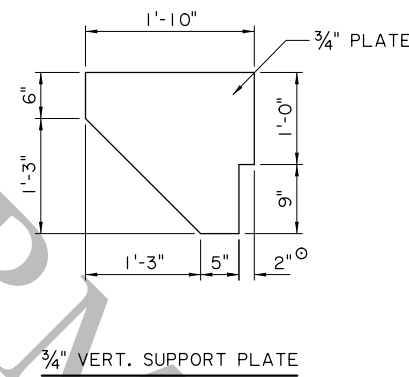
☒ SIGN MAY BE OFFSET FROM THE CENTERLINE OF POST. REGARDLESS OF ITS ORIENTATION, NO PART OF THE SIGN SHALL EXTEND BEYOND THE FRONT EDGE OF THE TOP OF BARRIER RAIL. COST OF OFFSET SIGN ATTACHMENT SHALL BE PAID FOR UNDER 729-08-00210 "SIGN SUPPORT (3 1/2" SIZE POST) (STRUCTURE MOUNT)".



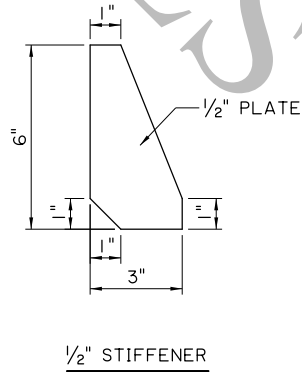
ELEVATION



1" HORIZ. SUPPORT PLATE



3/4" VERT. SUPPORT PLATE



1/2" STIFFENER

SIGN SUPPORT BRACKET DETAILS

NOTES:

STRUCTURAL MEMBERS SHALL BE AASHTO M270 GRADE 50 STEEL AND SHALL BE HOT DIPPED GALVANIZED PER ASTM A-123. ALL MISC. HARDWARE (EXCEPT STAINLESS STEEL BOLTS) SHALL BE GALVANIZED AS PER ASTM A-153.

○ ALL EXISTING DIMENSIONS ARE TO BE VERIFIED BY THE CONTRACTOR PRIOR TO FABRICATION. ANY ADJUSTMENTS TO SUPPORT BRACKET DIMENSIONS SHALL BE APPROVED BY THE ENGINEER.

* EQUIVALENT BENT PLATES MAY BE USED. ADJUST ANGLE OF BEND AS NEEDED TO ATTACH TO BARRIER RAIL.

PAYMENT FOR THE TYPE "A" SIGN POST AND SUPPORT BRACKET SHALL BE UNDER ITEM NO. 729-08-00210, "SIGN SUPPORT (3 1/2" SIZE POST) (STRUCTURE MOUNT)".

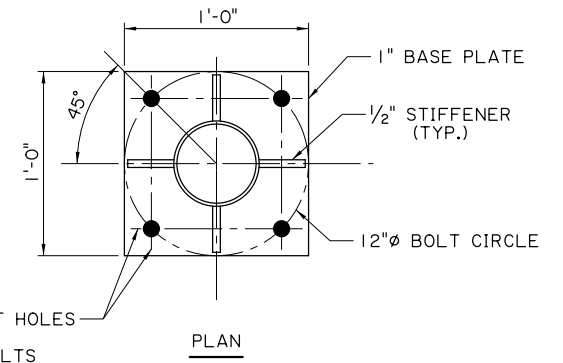
MECHANICAL ANCHOR BOLTS SHALL BE 3/4" STAINLESS STEEL (MIN. FY = 55 ksi) AND SHALL BE SELECTED FROM THE A.M.L. AND INSTALLED AS PER THE MANUFACTURER'S RECOMMENDATIONS. EACH ANCHOR SHALL HAVE AN ALLOWABLE CAPACITY OF 3 KIPS PULLOUT AND 3 KIPS SHEAR AFTER APPLICATION OF ANY REDUCTION FACTORS FOR ANCHOR SPACING AND EDGE DISTANCE.

A 1/8" NEOPRENE PAD SHALL BE USED BETWEEN ALL STEEL AND CONCRETE CONTACT SURFACES.

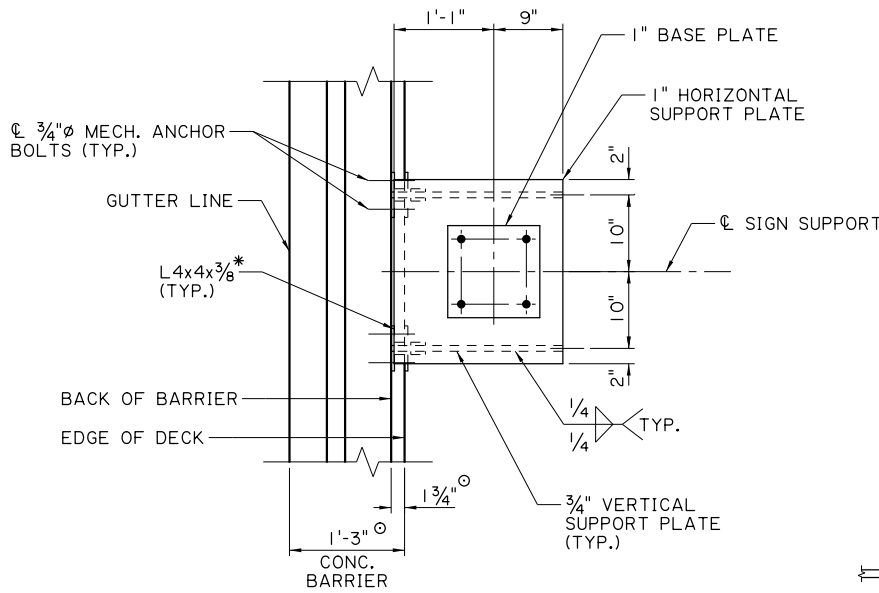
ANY PORTIONS OF THE EXISTING BARRIER THAT ARE DAMAGED SHALL BE REPAIRED TO THE SATISFACTION OF THE PROJECT ENGINEER.

REGARDLESS OF ITS ORIENTATION, NO PART OF ANY SIGN SHALL EXTEND BEYOND THE FRONT EDGE OF THE TOP OF BARRIER RAIL. DIMENSIONS OF SUPPORT POST AND BRACKET SHALL BE ADJUSTED AS NEEDED PRIOR TO FABRICATION.

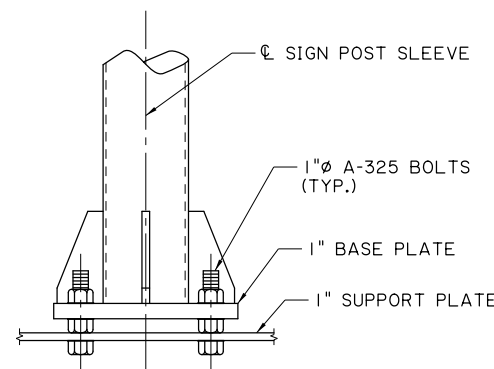
MAXIMUM ALLOWABLE SIGN AREA = 20 SQ. FT.



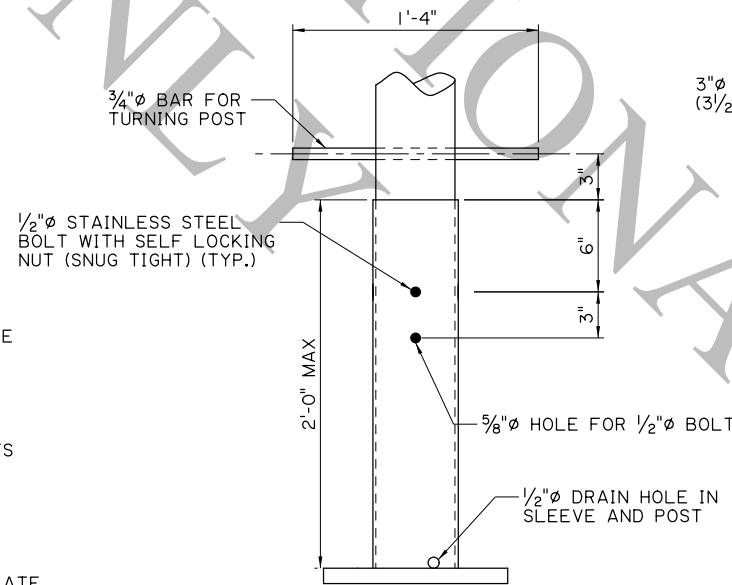
PLAN



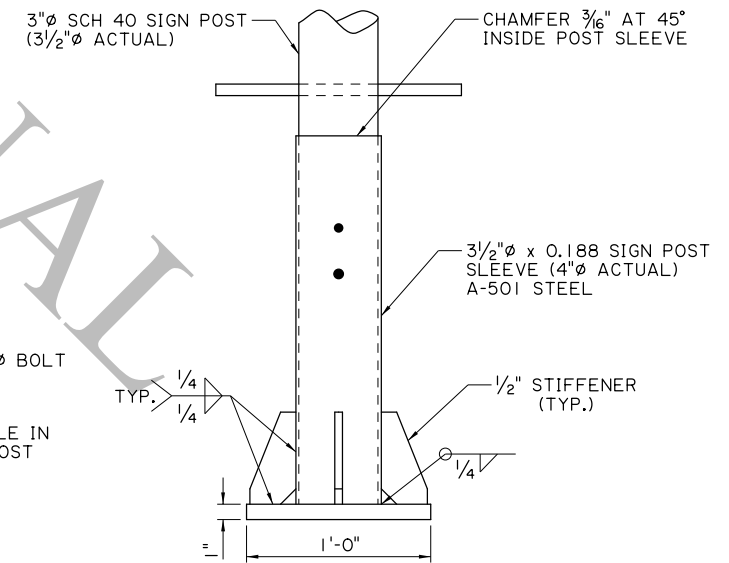
PLAN



1" BOLT DETAIL



5/8" BOLT DETAIL (STIFFENERS NOT SHOWN FOR CLARITY)



ELEVATION

1" BASE PLATE & SIGN POST SLEEVE DETAILS

SHEET NUMBER		PARISH		CONTROL SECTION		STATE PROJECT	
DESIGN	K. BRAUNER	CHECK	C. GUIDRY	DETAIL	K. BRAUNER	CHECK	C. GUIDRY
REVIEW	C. BOURGEOIS	SERIES # 16 OF 17					
APPROVED BY CHIEF ENGINEER:		DATE: 10/14/2025		REVISION OR CHANGE ORDER DESCRIPTION			
				BY			
				DATE			
				NO.			



CONTRAFLOW SIGNS (F - SHAPE BARRIER)



STANDARD PLAN

