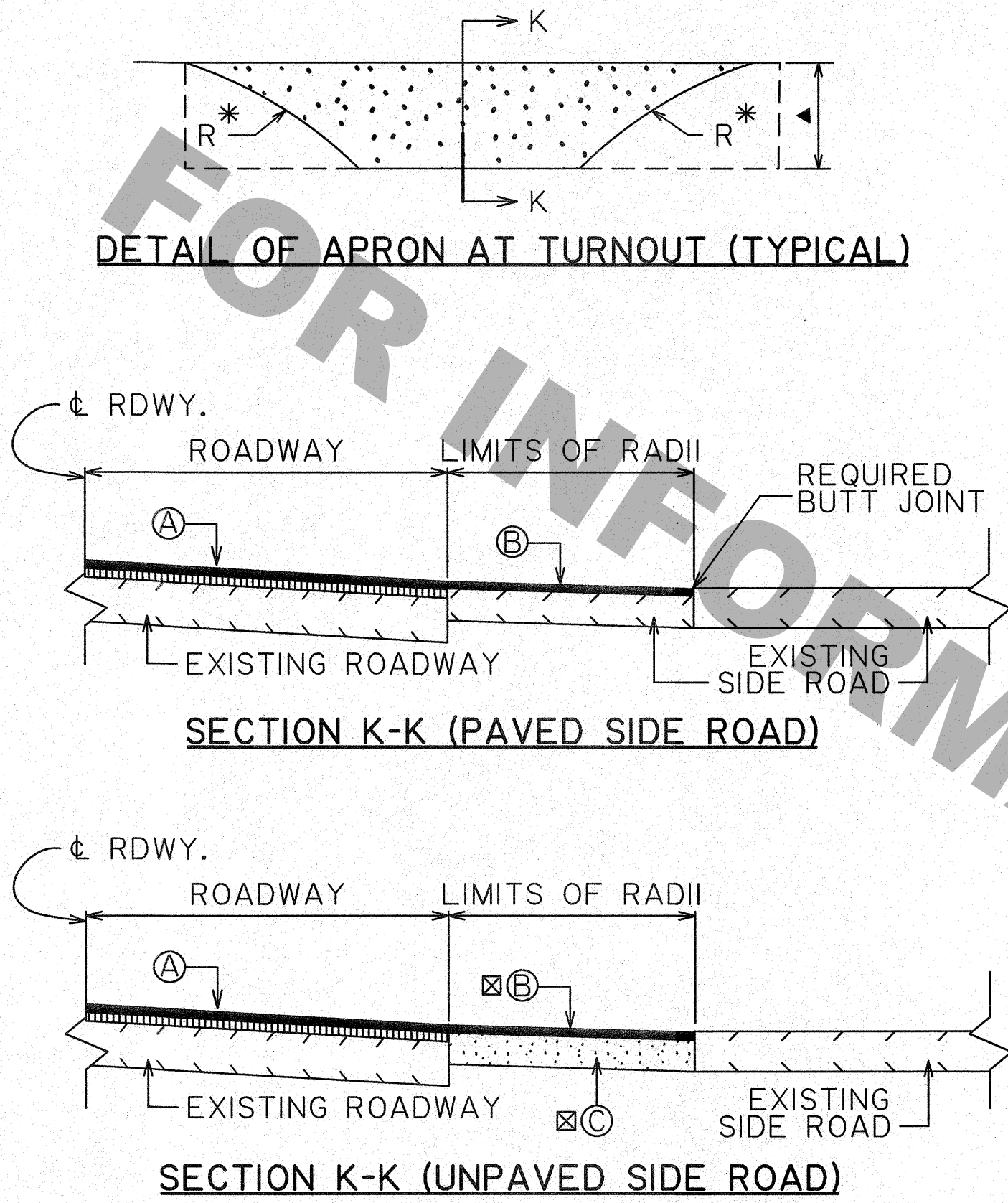


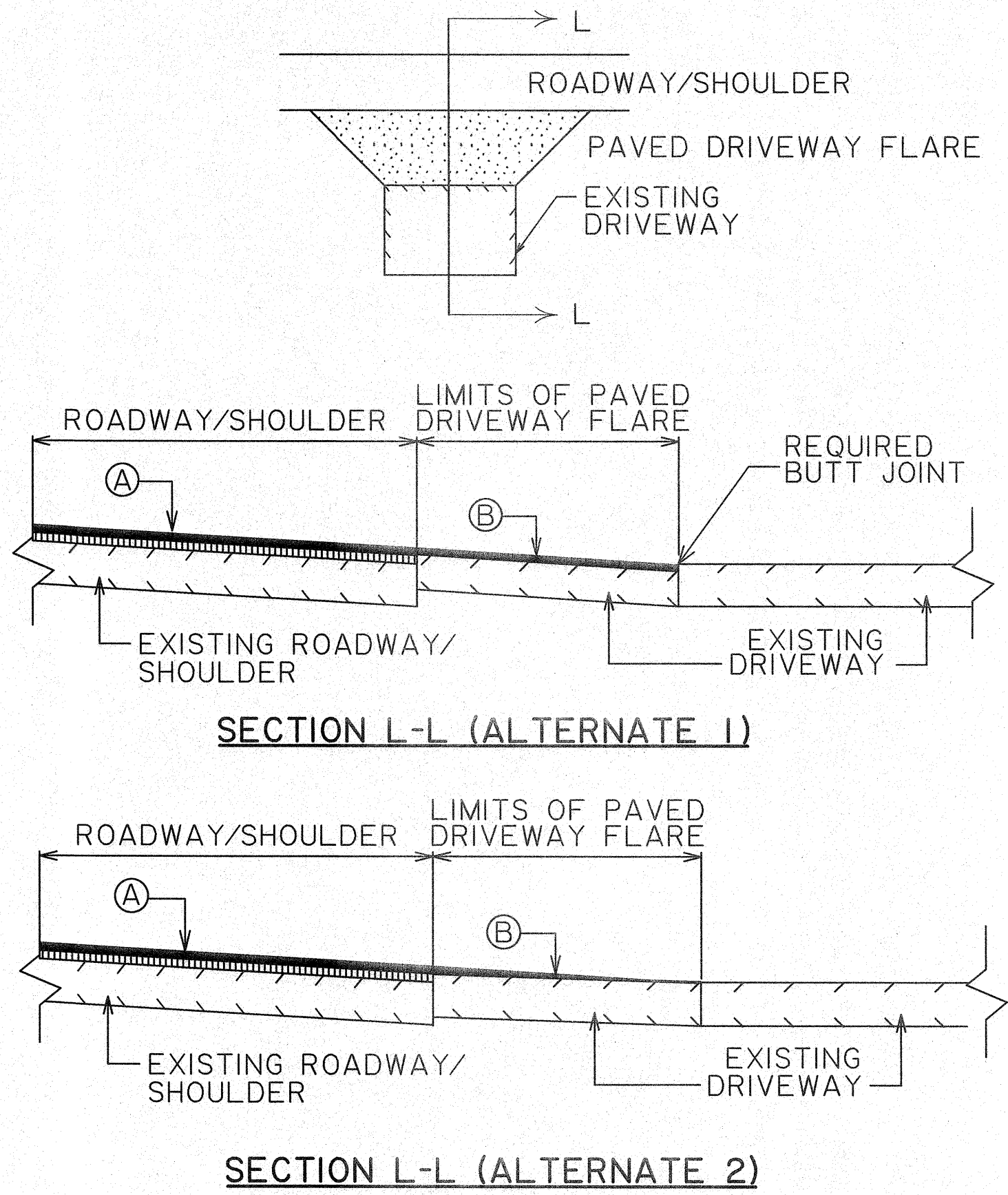
TURNOUT TIE-IN DETAILS
FOR OVERLAY PROJECTS



- Ⓐ ASPHALT CONCRETE (COURSES AND TYPES SHOWN ON ROADWAY TYPICAL SECTION)
- Ⓑ ASPHALT CONCRETE (THICKNESS SHALL MATCH ROADWAY WEARING SURFACE)
- ⓈⒸ ASPHALT CONCRETE BASE COURSE
- * MATCH EXISTING RADIUS
- ▲ VERTICAL TRANSITION FROM ROADWAY TO BUTT JOINT TIE-IN WHERE NEEDED
- Ⓢ TOTAL THICKNESS OF WEARING COURSE AND BASE COURSE SHALL BE A MINIMUM OF 6"

- NOTES:
1. DRIVE WIDTHS AND FLARE DIMENSIONS TO BE ADJUSTED TO MATCH EXISTING CONDITIONS AS DIRECTED BY THE PROJECT ENGINEER.
 2. TYPE OF TIE-IN AND LENGTH OF OVERLAY TRANSITION TO BE SET BY PROJECT ENGINEER TO ACHIEVE A SUITABLE CONNECTION FOR EXISTING DRIVE.
 3. REFER TO SHEET 2 OF DW-01 FOR SUGGESTED TIE-IN CRITERIA OF STEEP GRADES.

DRIVEWAY TIE-IN DETAILS
FOR OVERLAY PROJECTS



- Ⓐ ASPHALT CONCRETE (COURSES AND TYPES SHOWN ON ROADWAY TYPICAL SECTION)
- Ⓑ ASPHALT CONCRETE (THICKNESS SHALL MATCH ROADWAY WEARING COURSE)

SHEET NUMBER		PARISH		CONTROL SECTION		STATE PROJECT	
DESIGN	CHECK	P. TONEY	R. MCWILLAN	DETAIL	CHECK	P. TONEY	R. MCWILLAN
REVIEW		D. SMITH		SERIES #		3 OF 3	

STATE OF LOUISIANA

AIDAN EYMARD

License No. 46220

PROFESSIONAL ENGINEER

IN

CIVIL ENGINEERING

Aidan Eymard

9/2/2022

APPROVED BY CHIEF ENGINEER: *Christy P. Kelly* DATE: 9/4/2022

STATE OF LOUISIANA

DEPARTMENT OF TRANSPORTATION & DEVELOPMENT

TURNOUT AND DRIVEWAY TIE-IN DETAILS

STANDARD PLAN DW-01

DOTD

LOUISIANA DEPARTMENT OF TRANSPORTATION & DEVELOPMENT

STANDARD PLAN