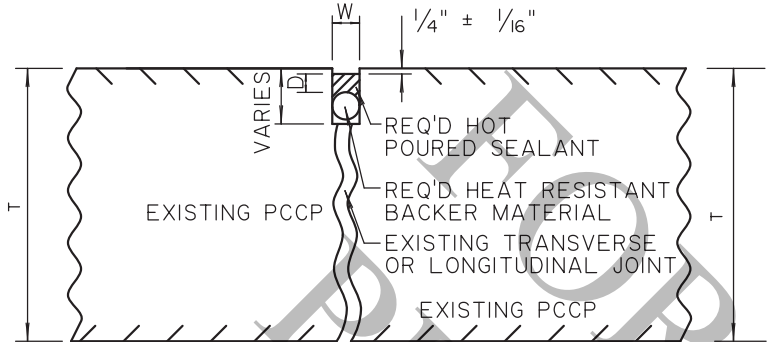


CLEANING AND RESEALING EXISTING
TRANSVERSE AND LONGITUDINAL JOINTS



SECTION VIEW

TRANSVERSE JOINTS

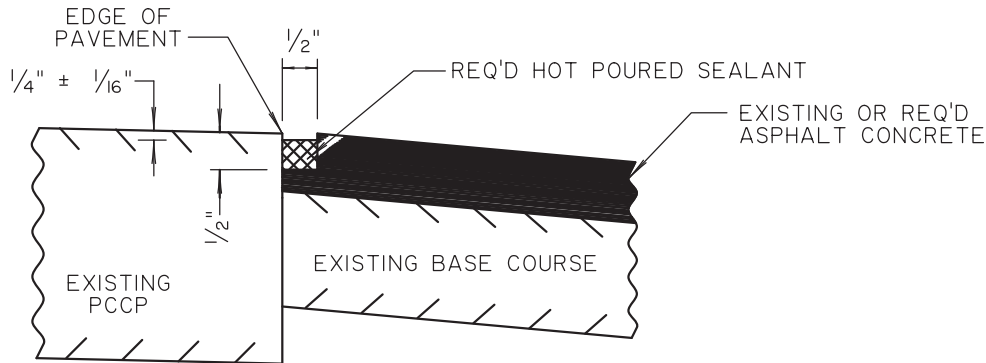
WIDTH (W)	DEPTH (D)	BACKER MATERIAL (DIAMETER)	MINIMUM DEPTH TO REMOVE INCOMPRESSIBLES
1/2" - 1"	1/2"	W + 25%	T/2
1" - 1 1/2"	W/2	W + 25%	T

LONGITUDINAL JOINTS

WIDTH (W)	DEPTH (D)	BACKER MATERIAL (DIAMETER)	MINIMUM DEPTH TO REMOVE INCOMPRESSIBLES
3/8" - 1"	1/2"	W + 25%	T/2
1" - 1 1/2"	W/2	W + 25%	T

- NOTES:
- HOT POURED SEALANT SHALL CONFORM TO SECTION 602.3.030 OF THE STANDARD SPECIFICATIONS.
 - BACKER MATERIAL SHALL CONSIST OF HEAT RESISTANT, CLOSED-CELL, CROSS-LINKED POLYETHYLENE OR POLYOLEFIN FOAM.
 - ALL WORK ON THIS DETAIL TO BE PAID FOR UNDER ITEM LABELED: CLEANING AND RESEALING EXISTING TRANSVERSE PAVEMENT JOINTS, OR CLEANING AND RESEALING EXISTING LONGITUDINAL PAVEMENT JOINTS.
 - DETAIL NOT TO SCALE.

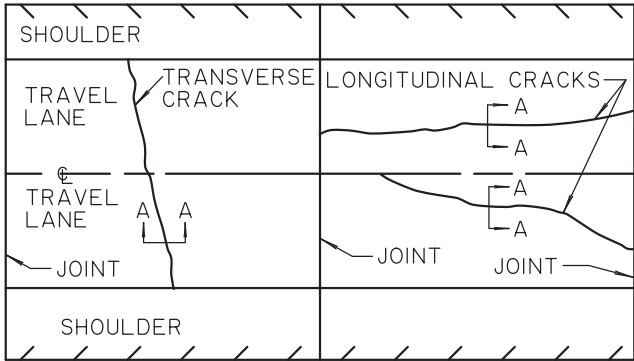
LONGITUDINAL SHOULDER JOINTS



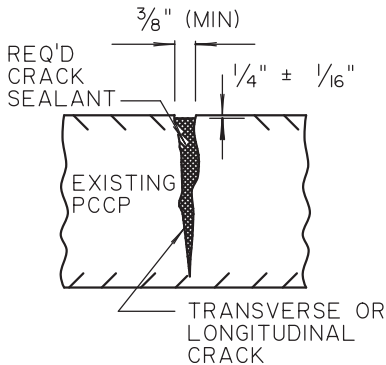
SECTION VIEW

- NOTES:
- HOT POURED SEALANT SHALL CONFORM TO SECTION 602.3.030 OF THE STANDARD SPECIFICATIONS.
 - ALL WORK ON THIS DETAIL TO BE PAID FOR UNDER THE ITEM LABELED: LONGITUDINAL SHOULDER JOINTS.
 - DETAIL NOT TO SCALE.

CLEANING AND SEALING RANDOM CRACKS



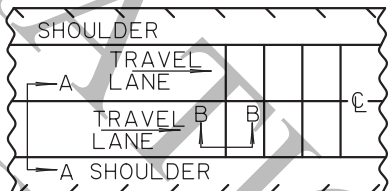
PLAN VIEW



SECTION A-A

- NOTES:
- APPLIES TO RANDOM CRACKS GREATER THAN 3/8" IN WIDTH ON JOINTED PCCP.
 - CRACK SEALING LIMITS SHALL BE AS DIRECTED BY THE PROJECT ENGINEER.
 - SEALANT FOR TRANSVERSE AND LONGITUDINAL CRACKS SHALL CONFORM TO 602.3.040 OF THE STANDARD SPECIFICATIONS.
 - ALL WORK ON THIS DETAIL TO BE PAID FOR UNDER ITEM LABELED: CLEANING AND SEALING RANDOM CRACKS.
 - DETAIL NOT TO SCALE.

SAWING AND SEALING JOINTS IN
ASPHALT CONCRETE OVERLAY

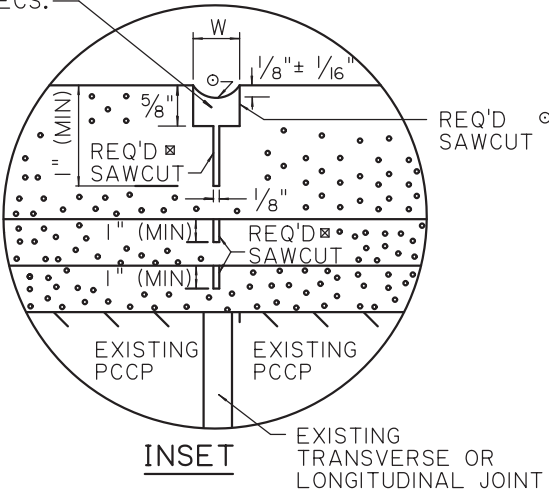


PLAN VIEW

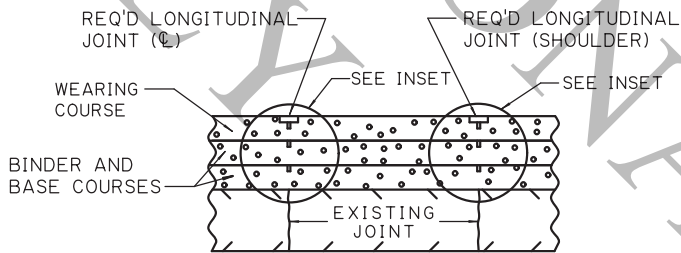
RESERVOIR
DIMENSIONS

SLAB LENGTH	W
50' OR LESS	1/2"
51' OR GREATER	5/8"

HOT POURED SEALANT SHALL
CONFORM TO SECTION 602.3.030
OF THE STD. SPECS.

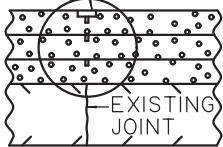


INSET



SECTION A-A

SEE INSET - REQ'D TRANSVERSE JOINT



SECTION B-B

- NOTES:
- SAWCUTS IN ASPHALT CONCRETE LIFTS (X) TO BE PAID FOR UNDER ITEM LABELED: SAWCUTS IN ASPHALT CONCRETE LIFTS.
 - SAWING AND SEALING JOINTS IN ASPHALT CONCRETE OVERLAY (O) TO BE PAID FOR UNDER ITEMS LABELED: SAWING AND SEALING LONGITUDINAL JOINTS IN ASPHALT CONCRETE OVERLAY, OR SAWING AND SEALING TRANSVERSE JOINTS IN ASPHALT CONCRETE OVERLAY.
 - DETAIL NOT TO SCALE.

SHEET NUMBER		PARISH		B. MAY		R. ISEMAN		B. MAY		R. ISEMAN		STATE PROJECT	
DESIGN		CHECK		DETAIL		CHECK		REVIEW		SERIES #		I OF I	
APPROVED BY CHIEF ENGINEER:												DATE: Oct. 1, 2025	
REVISION OR CHANGE ORDER DESCRIPTION												BY	
NO.												DATE	
CONCRETE JOINTS AND CRACKS REHAB												CPR-01	
DOTD												LOUISIANA DEPARTMENT OF TRANSPORTATION & DEVELOPMENT	
STANDARD PLAN													