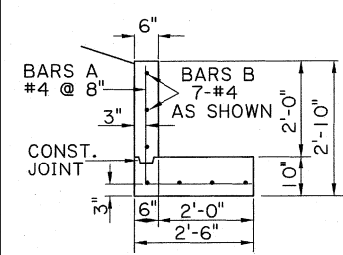
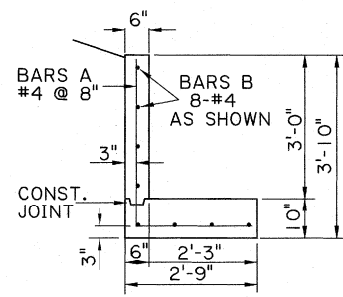


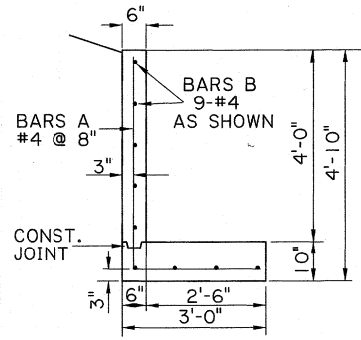
NOTE: MINIMUM CONCRETE COVER SHALL BE 3" FOR THE RETAINING SIDE OF THE WALL AND FOR THE FOOTING, AND 2" FOR THE OPEN SIDE OF THE WALL.



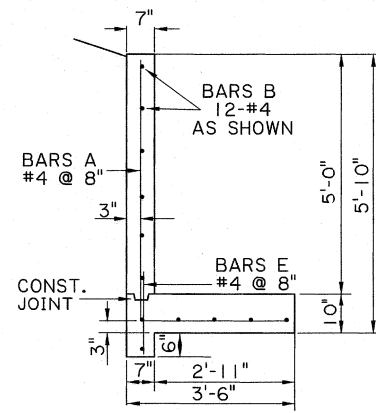
TYPE L2



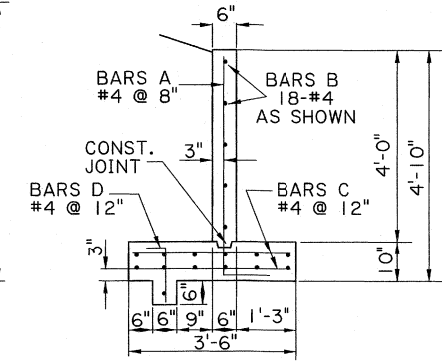
TYPE L3



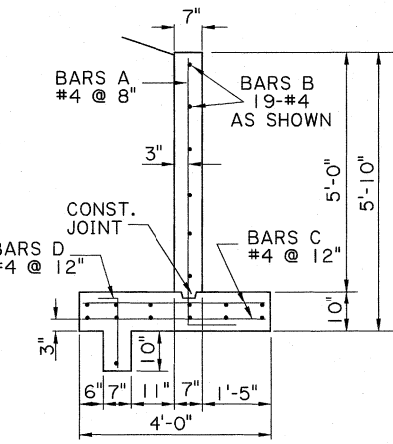
TYPE L4



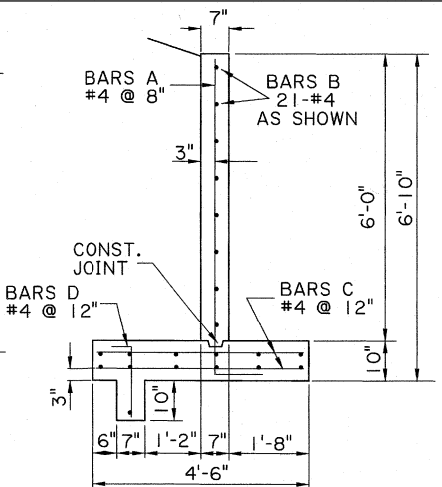
TYPE L5



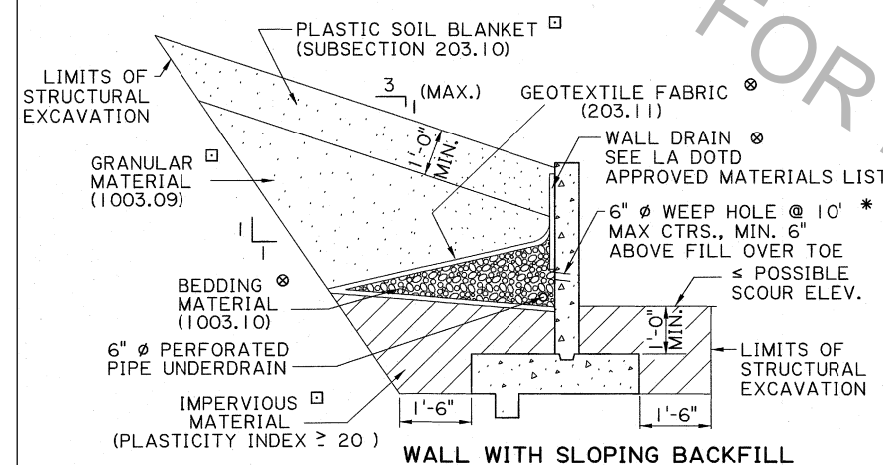
TYPE T4



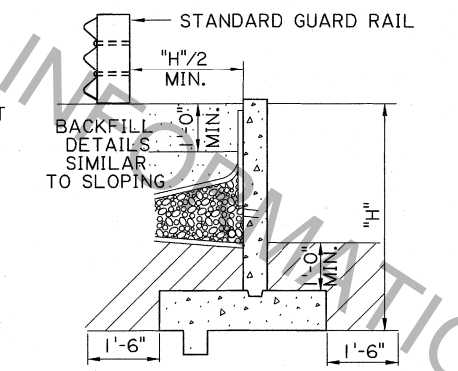
TYPE T5



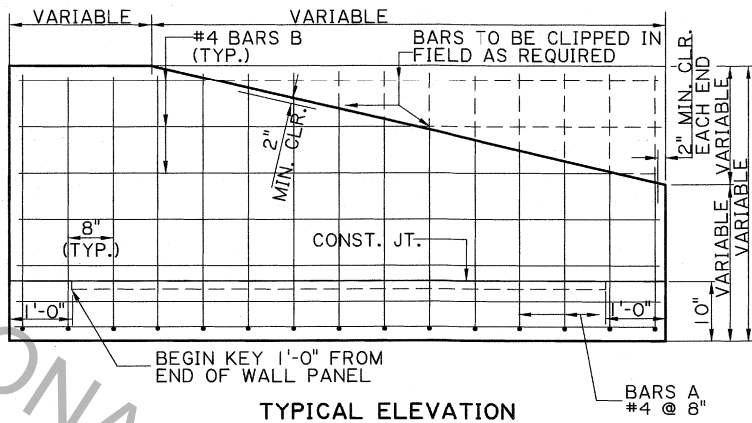
TYPE T6



WALL WITH SLOPING BACKFILL



WALL WITH HORIZONTAL BACKFILL

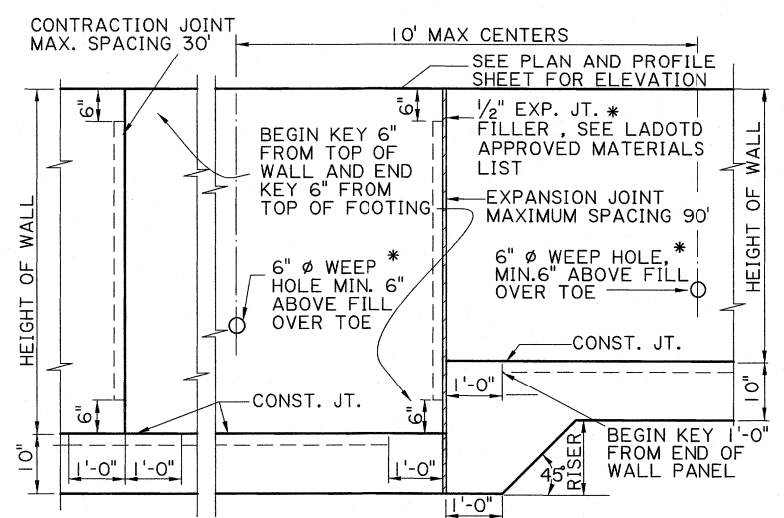


TYPICAL ELEVATION  
(SHOWING REINFORCEMENT DETAILS)  
SHEAR KEY NOT SHOWN FOR CLARITY

REBAR DIMENSIONS

WALL TYPE	SIZE	a	b	LENGTH	LENGTH	LENGTH	LENGTH
L2	#4	2'-5"	2'-11"	4'-6"			
L3	#4	3'-5"	2'-4"	5'-9"			
L4	#4	4'-5"	2'-7"	7'-0"			
L5	#4	5'-5"	3'-1"	8'-6"			1'-6"
T4	#4	4'-5"	0'-10"	5'-3"	3'-2"	1'-3"	
T5	#4	5'-5"	1'-1"	6'-6"	3'-8"	1'-7"	
T6	#4	6'-5"	1'-4"	7'-9"	4'-2"	1'-7"	

NOTES:  
ALL BARS ARE #4  
BARS B,C,& E ARE STRAIGHT  
BAR B LENGTH = WALL LENGTH BETWEEN JOINTS MINUS 4"

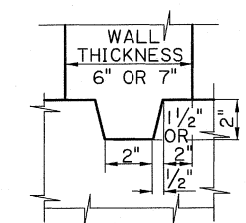


PART ELEVATION OF RETAINING WALL  
(SHOWING RISER UNDER FOOTING)

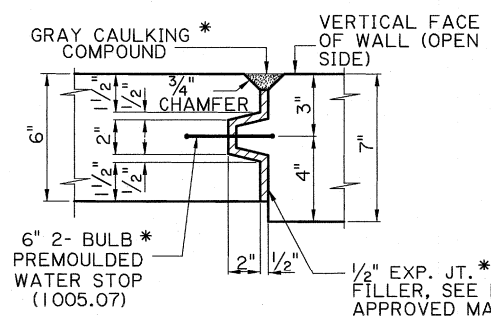
MATERIAL QUANTITIES  
(PER LINEAR FOOT OF WALL)

WALL TYPE	L2	L3	L4	L5	T4	T5	T6
CLASS "A1" CONCRETE (CU. YDS.)	0.077	0.140	0.167	0.211	0.191	0.249	0.287
GRADE 60 STEEL (LBS.)	9.2	11.0	13.0	18.0	22.4	25.2	28.4

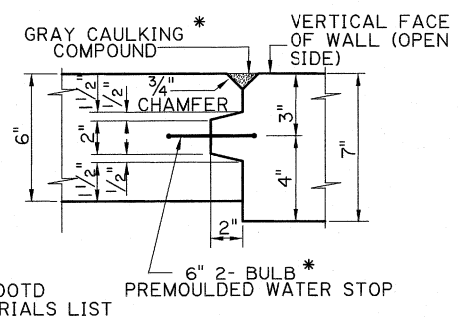
6" Ø PERFORATED PIPE UNDERDRAIN TO BE PAID PER LIN. FT.



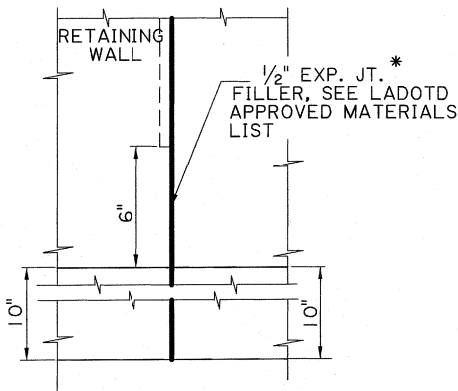
WALL TO FOOTING KEY DETAIL



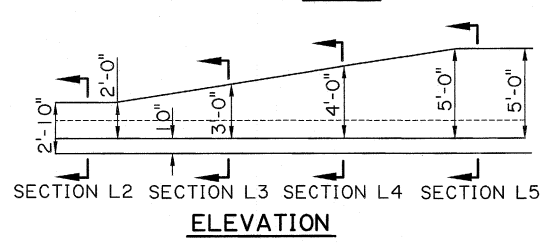
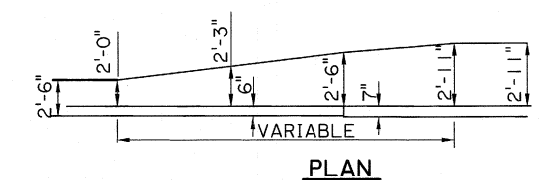
EXPANSION JOINT DETAIL



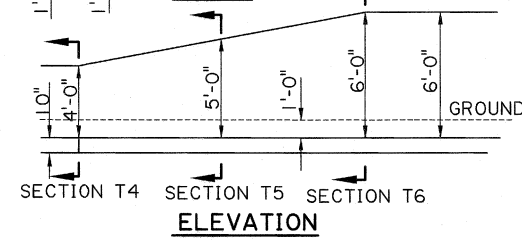
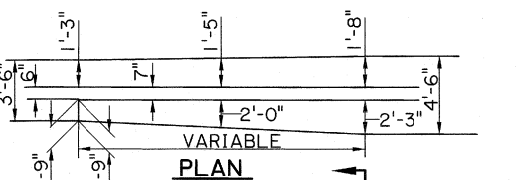
CONTRACTION JOINT DETAIL



FOOTING EXPANSION JOINT DETAIL

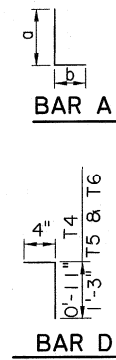


"L" TYPE WALL TRANSITION FROM L2 TO L5



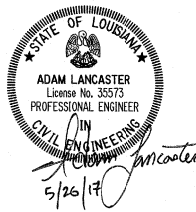
"T" TYPE WALL TRANSITION FROM T4 TO T6

SLOPING RETAINING WALL



- NOTES:
- CONSTRUCTION SPECIFICATIONS: LATEST APPROVED LOUISIANA STANDARD SPECIFICATIONS FOR ROADS AND BRIDGES, SUPPLEMENTAL SPECIFICATIONS, AND SPECIAL PROVISIONS.
  - DESIGN SPECIFICATIONS: AASHTO, LRFD FOURTH EDITION 2007 (WITH 2008 AND 2009 INTERIM SPECIFICATIONS).
  - ALL CONCRETE SHALL BE CLASS "A1", CHAMFER ALL EXPOSED CORNERS 3/4".
  - DEFORMED REINFORCING BARS SHALL BE GRADE 60. DIMENSIONS RELATING TO REINFORCING STEEL SPACING ARE TO BAR CENTERS.
  - MAXIMUM ALLOWABLE SOIL PRESSURE: 1000 PSF.
  - RETAINING WALLS SHALL BE INVESTIGATED FOR EXCESSIVE VERTICAL AND LATERAL DISPLACEMENT. TOLERABLE VERTICAL AND LATERAL DEFORMATION CRITERIA FOR RETAINING WALL SHALL BE DEVELOPED ON THE FUNCTION AND TYPE OF WALL, ANTICIPATED SERVICE LIFE, AND CONSEQUENCES OF INACCEPTABLE MOVEMENTS TO THE WALL AND ANY POTENTIAL AFFECTED NEARBY STRUCTURE.
  - MAXIMUM SPACING OF EXPANSION JOINT IS 90 FT..
  - MAXIMUM SPACING OF CONTRACTION JOINT IS 30 FT..
  - WALL DRAIN AND PERFORATED PIPE UNDERDRAIN SHALL BE IN ACCORDANCE WITH SECTION 703 OF THE LOUISIANA STANDARD SPECIFICATIONS.

- \* TO BE INCLUDED WITH COST OF CLASS "A1" CONCRETE.  
⊗ TO BE INCLUDED WITH COST OF PERFORATED PIPE UNDERDRAIN.  
⊠ BACKFILL MATERIAL TO BE INCIDENTAL TO STRUCTURAL EXCAVATION IN CUT SECTION, AND TO BE PAID AS EMBANKMENT IN FILL SECTION.



SHEET NUMBER	
DESIGNED T. LE PELTIER	PARISH
CHECKED J. GRASS	FEDERAL PROJECT
DATE MAY 2017	STATE PROJECT
DATE 6-13-2017	DATE
BY T. Williams	REVISION DESCRIPTION
APPROVED BY	DATE
CHIEF ENGINEER	DATE
MISC. RETAINING WALL DETAILS T & L TYPES 2'-0" THROUGH 6'-0" HEIGHTS	
BRIDGE AND STRUCTURAL DESIGN	