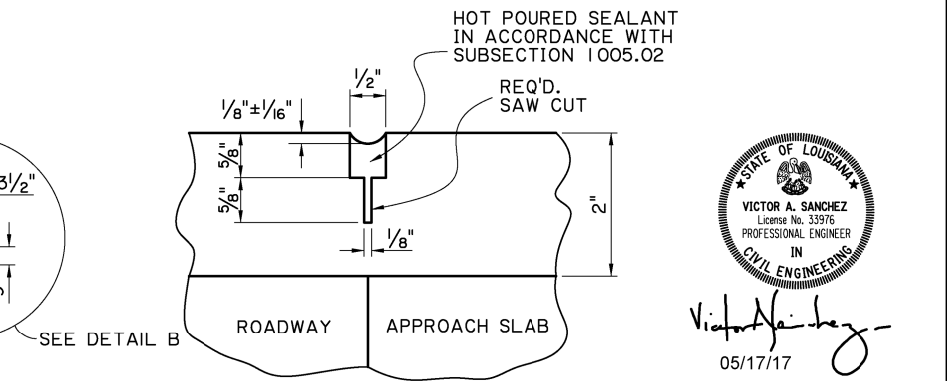
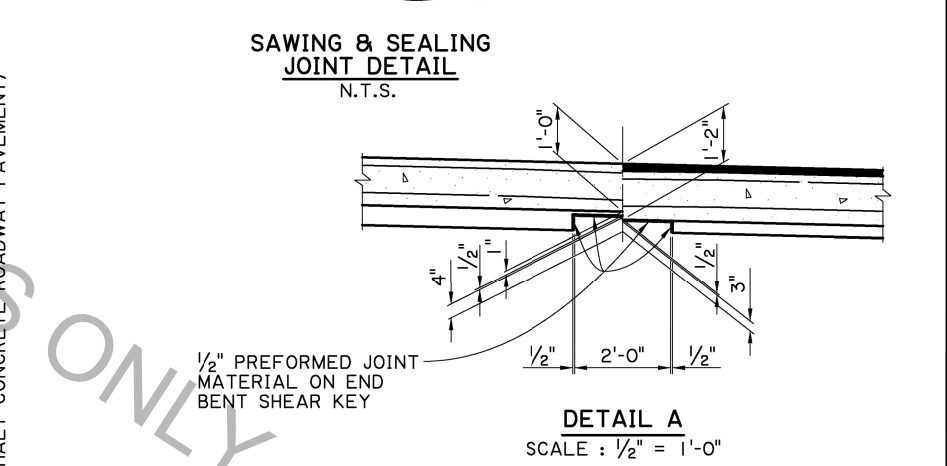


ESTIMATED QUANTITIES (ONE SLAB)						
BAR	NO.	SHORT BAR	VAR. (INCHES)	LONG BAR	TOTAL LENGTH	LOCATION
601	1			28'-1"	28'-1"	LONGITUDINAL BOTTOM OF SLAB
602-681	1 EA.	28'-2"	3.4684	51'-0"	3166'-8"	LONGITUDINAL BOTTOM OF SLAB
682	1			51'-2"	51'-2"	LONGITUDINAL BOTTOM OF SLAB
683	57			40'-8"	2318'-0"	TRANSVERSE BOTTOM OF SLAB
684-6128	1 EA.	1'-4"	10.3864	39'-5"	916'-11"	TRANSVERSE BOTTOM OF SLAB
TOTAL NO. 6 BARS = 6,480'-10" = 9,734 LBS.						
401	1			28'-1"	28'-1"	LONGITUDINAL TOP OF SLAB
402-421	1 EA.	28'-7"	6.9474	39'-7"	681'-8"	LONGITUDINAL TOP OF SLAB
422-441	1 EA.	41'-10"	6.9474	52'-10"	946'-8"	LONGITUDINAL TOP OF SLAB
442	28			43'-4"	1213'-4"	TRANSVERSE TOP OF SLAB
443-465	1 EA.	1'-9"	20.7727	39'-10"	478'-3"	TRANSVERSE TOP OF SLAB
466	14			2'-0"	28'-0"	DOWELS IN CURB
467	2			9'-7"	19'-2"	LONGIT. IN CURB
TOTAL NO. 4 BARS = 3395'-2" = 2,268 LBS.						
* TOTAL DEFORMED REINFORCING STEEL = 12,002 LBS.						
CONCRETE APPROACH SLAB = 182.22 SQ.YDS.						
ASPHALT CONCRETE = 18.6 TONS						
SAW CUT AND SEAL = 39 LIN. FT.						

* TO BE PAID FOR UNDER ITEM CONCRETE APPROACH SLABS
 O INCLUDES 1'-8" MINIMUM LAP SPLICE, ALL LAP SPLICES ARE TO BE STAGGERED.
 X REQUIRED WHEN APPROACH SLAB IS ADJACENT TO ASPHALT CONCRETE PAVEMENT. PAID FOR UNDER ITEM ASPHALT CONCRETE, AND SAWING AND SEALING TRANSVERSE JOINTS IN ASPHALT CONCRETE OVERLAY.



STATE OF LOUISIANA
 VICTOR A. SANCHEZ
 License No. 33976
 PROFESSIONAL ENGINEER
 IN
 CIVIL ENGINEERING
 05/17/17



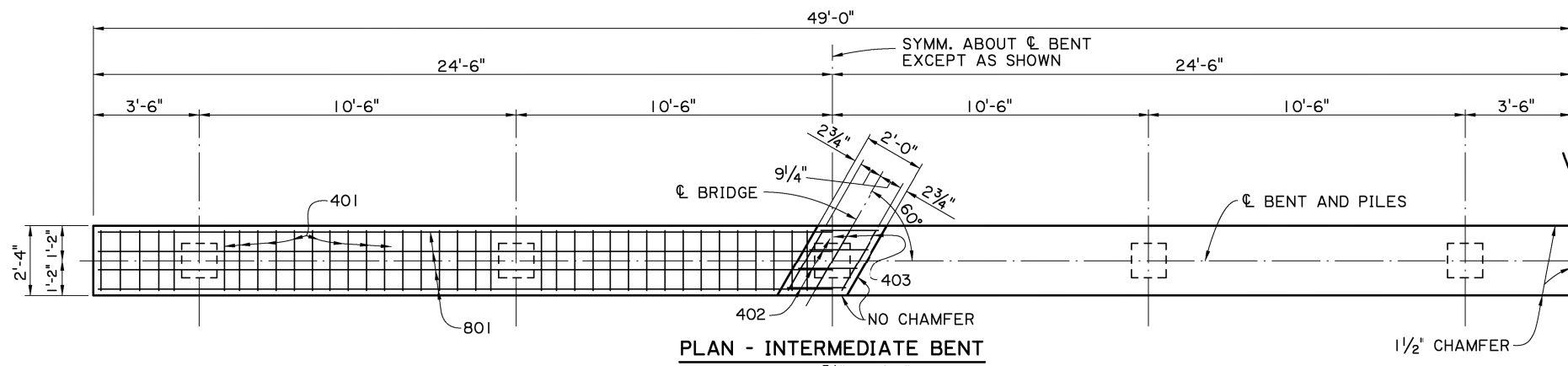
APPROACH SLAB NOTES:
CONSTRUCTION SPECIFICATIONS: LATEST APPROVED LOUISIANA STANDARD SPECIFICATIONS FOR ROADS AND BRIDGES, SUPPLEMENTAL SPECIFICATIONS AND SPECIAL PROVISIONS.
DESIGN SPECIFICATIONS: AASHTO LRFD BRIDGE DESIGN SPECIFICATIONS 4th EDITION, WITH 2008 & 2009 INTERIMS.
STRUCTURAL CONCRETE: ALL CONCRETE SHALL BE CLASS A1. EXPOSED EDGES SHALL HAVE A 3/4" CHAMFER, UNLESS OTHERWISE NOTED.
ASPHALT CONCRETE: TO BE THE SAME TYPE AS THE ASPHALT CONCRETE USED FOR THE APPROACH ROADWAY PAVEMENT OR OVERLAY.
REINFORCING STEEL: ALL REINFORCING STEEL SHALL BE GRADE 60. DIMENSIONS RELATING TO THE FABRICATION ARE OUT-TO-OUT OF BARS, UNLESS OTHERWISE NOTED. DIMENSIONS RELATING TO SPACING ARE TO BAR CENTERS.
BEDDING MATERIAL: FOR DETAILS OF BEDDING MATERIAL AND UNDERDRAINS. SEE STANDARD DETAIL BD.2.10.1.0.07.
SAWING & SEALING: THE ASPHALT CONCRETE SHALL BE SAW CUT AT THE END OF THE CONCRETE APPROACH SLAB THE ENTIRE ROADWAY WIDTH AND SEALED.
BASIS OF PAYMENT: ALL MATERIAL SHALL BE PAID FOR UNDER 'CONCRETE APPROACH SLABS' ACCORDING TO THE SPECIFICATIONS, EXCEPT WHERE NOTED ON THIS SHEET.

SHEET NUMBER	DATE	NO.	BY
CONTROL SECTION	REVISION OR CHANGE ORDER DESCRIPTION	NO.	DATE
PARISH	PROJECT	NO.	DATE
DESIGNED	CHECKED	REVIEWED	SERIES #
Detailed	J. NAKHLEH	D. HYMEL	05/17/17
Checked	B. DELATTE	J. NAKHLEH	
State	PROJECT	NO.	DATE
05/17/17			

APPROACH SLAB
 40'-0" CONCRETE APPROACH SLAB
 40'-0" CLEAR ROADWAY
 60" CROSSING ONE WAY TANGENT

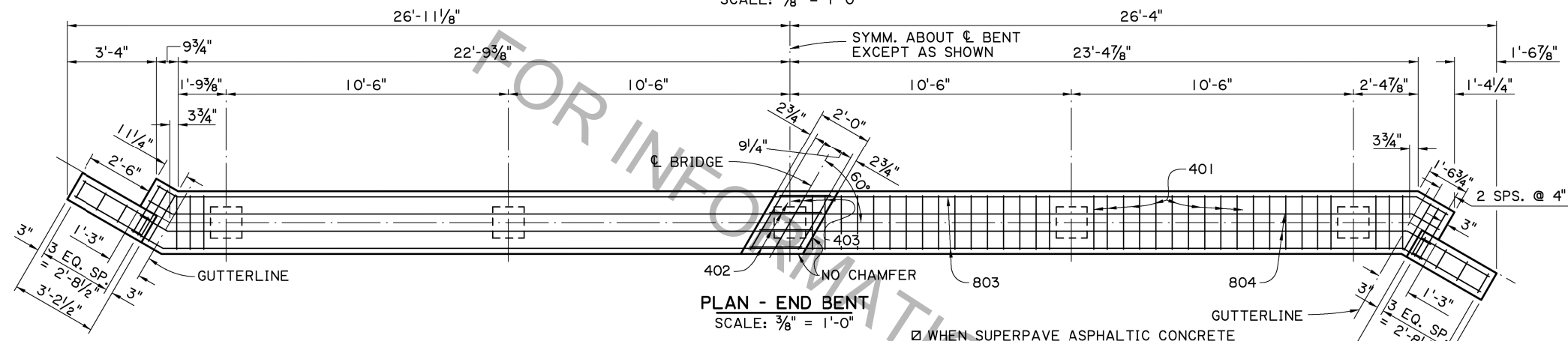
STANDARD DETAIL
 CASBR-60-40T-40L-20SL

DOTD
 DOTD BRIDGE DESIGN



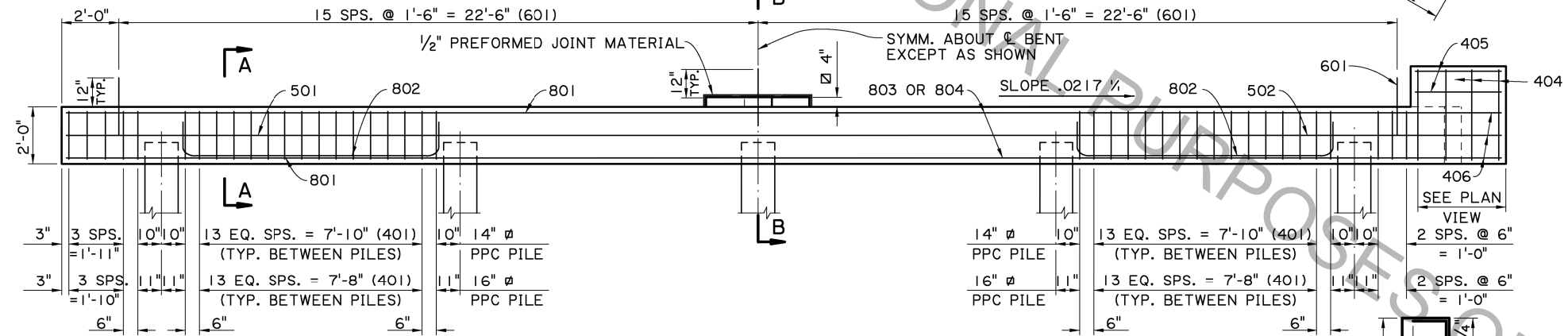
PLAN - INTERMEDIATE BENT

SCALE: 3/8" = 1'-0"



PLAN - END BENT

SCALE: 3/8" = 1'-0"

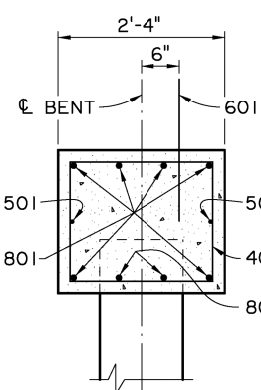


HALF ELEVATION - INTERMEDIATE BENT

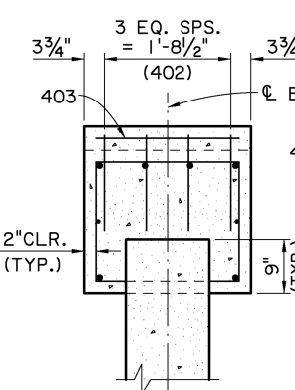
SCALE: 3/8" = 1'-0"

HALF ELEVATION - END BENT

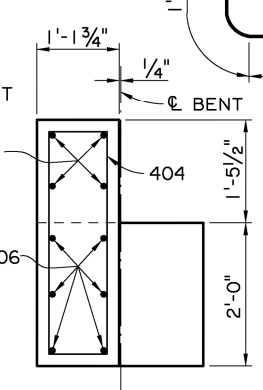
SCALE: 3/8" = 1'-0"



SECTION A-A
SCALE: 3/4" = 1'-0"



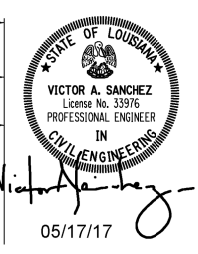
SECTION B-B
SCALE: 3/4" = 1'-0"



END ELEVATION
SCALE: 3/4" = 1'-0"

AS-DESIGNED RATING		
VEHICLE	RATING FACTOR	NOTES
HL-93 (INV)	1.395	
HL-93 (OPR)	1.809	
LADV-11 (INV)	1.073	MAGNIFICATION FACTOR = 1.3

502, 803, & 804
502-3 3/4" ø PIN
803 & 804-6" ø PIN



ESTIMATED QUANTITIES (ONE INTER. BENT)				
BAR NO.	UNIT LENGTH	TOTAL LENGTH	LOCATION	
801	6	48'-8"	292'-0"	LONGIT. IN CAP
802	8	11'-4"	90'-8"	LONGIT. IN CAP
TOTAL NO. 8 BARS = 382'-8" = 1,022 LBS.				
601	31	2'-0"	62'-0"	DOWELS
TOTAL NO. 6 BARS = 62'-0" = 93 LBS.				
501	2	48'-8"	97'-4"	LONGIT. IN CAP
TOTAL NO. 5 BARS = 97'-4" = 102 LBS.				
401	74	8'-2"	604'-4"	STIRRUPS IN CAP
402	4	4'-7"	18'-4"	STIRRUPS IN RISER
403	3	2'-3"	6'-9"	LONGIT. IN RISER
TOTAL NO. 4 BARS = 629'-5" = 421 LBS.				
* TOTAL DEFORMED REINFORCING STEEL = 1,638 LBS.				
⊖ CLASS A1 CONCRETE = 8.29 CU. YDS.				
MAX. PILE LOAD: SERVICE DEAD LOAD = 30 TONS				
SERVICE LIVE LOAD = 42 TONS				
FACTORED TOTAL LOAD = 100 TONS				
* ADD 93 LBS. OF REINFORCING STEEL (31-601 DOWELS) WHEN TWO FIXED ENDS OCCUR ON THE SAME BENT.				

ESTIMATED QUANTITIES (ONE END BENT)				
BAR NO.	UNIT LENGTH	TOTAL LENGTH	LOCATION	
802	8	11'-4"	90'-8"	LONGIT. IN CAP
803	4	48'-3"	193'-0"	LONGIT. IN CAP
804	2	48'-4"	96'-8"	LONGIT. IN CAP
TOTAL NO. 8 BARS = 380'-4" = 1,015 LBS.				
601	31	2'-0"	62'-0"	DOWELS
TOTAL NO. 6 BARS = 62'-0" = 93 LBS.				
502	2	48'-3"	96'-6"	LONGIT. IN CAP
TOTAL NO. 5 BARS = 96'-6" = 101 LBS.				
401	76	8'-2"	620'-8"	STIRRUPS IN CAP
402	4	4'-7"	18'-4"	STIRRUPS IN RISER
403	3	2'-3"	6'-9"	LONGIT. IN RISER
404	8	8'-9"	70'-0"	STIRRUPS IN WINGWALL
405	8	2'-10"	22'-8"	LONGIT. IN WINGWALL
406	12	4'-0"	48'-0"	LONGIT. IN WINGWALL
TOTAL NO. 4 BARS = 786'-5" = 526 LBS.				
* TOTAL DEFORMED REINFORCING STEEL = 1,735 LBS.				
⊖ CLASS A1 CONCRETE = 9.06 CU. YDS.				
MAX. PILE LOAD: SERVICE DEAD LOAD = 30 TONS				
SERVICE LIVE LOAD = 42 TONS				
FACTORED TOTAL LOAD = 100 TONS				

BENT NOTES:
CONSTRUCTION SPECIFICATIONS: LATEST APPROVED LOUISIANA STANDARD SPECIFICATIONS FOR ROADS AND BRIDGES, SUPPLEMENTAL SPECIFICATIONS AND SPECIAL PROVISIONS.
DESIGN SPECIFICATIONS: AASHTO LRFD BRIDGE DESIGN SPECIFICATIONS, 4th EDITION, WITH 2008 & 2009 INTERIMS.
DESIGN LOAD: LIVE LOAD IS HL-93, AND LADV-11 (LOUISIANA DESIGN VEHICLE LIVE LOAD 2011).
STRUCTURAL CONCRETE: ALL CONCRETE SHALL BE CLASS A1. EXPOSED EDGES SHALL HAVE A 3/4" CHAMFER UNLESS OTHERWISE NOTED. ALL EXPOSED FACES OF WINGWALLS AND ENDS OF CAPS SHALL RECEIVE A SURFACE FINISH AS PER SUBSECTION 805.08 OF THE STANDARD SPECIFICATIONS, EXCEPT WHEN SPECIFIED ELSEWHERE IN THE PLANS. 1/2" PREFORMED JOINT MATERIAL AND ASPHALT SATURATED FELT SHALL BE INCLUDED IN THE PRICE BID FOR CLASS A1 CONCRETE.
REINFORCING STEEL: ALL REINFORCING STEEL SHALL BE GRADE 60. DIMENSIONS RELATING TO FABRICATION ARE OUT TO OUT OF BARS UNLESS OTHERWISE NOTED. DOWELS (601 BARS) SHALL BE PROVIDED AT ALL FIXED BEARINGS AND APPROACH SLAB BEARINGS (SEE GENERAL PLAN). ALL EXPOSED ENDS OF DOWELS SHALL BE WRAPPED WITH TWO LAYERS OF 15 LB. ASPHALT SATURATED FELT. CLOSE FITTING TUBES OF COMPRESSIBLE MATERIAL NOT LESS THAN 3/16" THICK MAY BE SUBSTITUTED.
PRECAST CONCRETE PILES: FOR DETAILS SEE STANDARD DETAIL BD.2.5.1.0.01 (CS-216) EXTERIOR PILES ARE TO BE BATTERED OUTWARD AT 1/2 ON 12 IN THE LONGITUDINAL DIRECTION OF THE BENT, WHEN NOTED ON THE GENERAL PLAN.
PREFORMED JOINT MATERIAL: PREFORMED JOINT MATERIAL SHALL BE IN ACCORDANCE WITH SECTION 815.04 OF THE STANDARD SPECIFICATIONS.

SHEET NUMBER: _____

DESIGNED BY: J. NAKHLEH
 CHECKED BY: D. HYMEL
 CONTROL SECTION: J. NAKHLEH
 REVIEWED BY: _____
 DATE: 05/17/17

PROJECT: _____

NO. _____

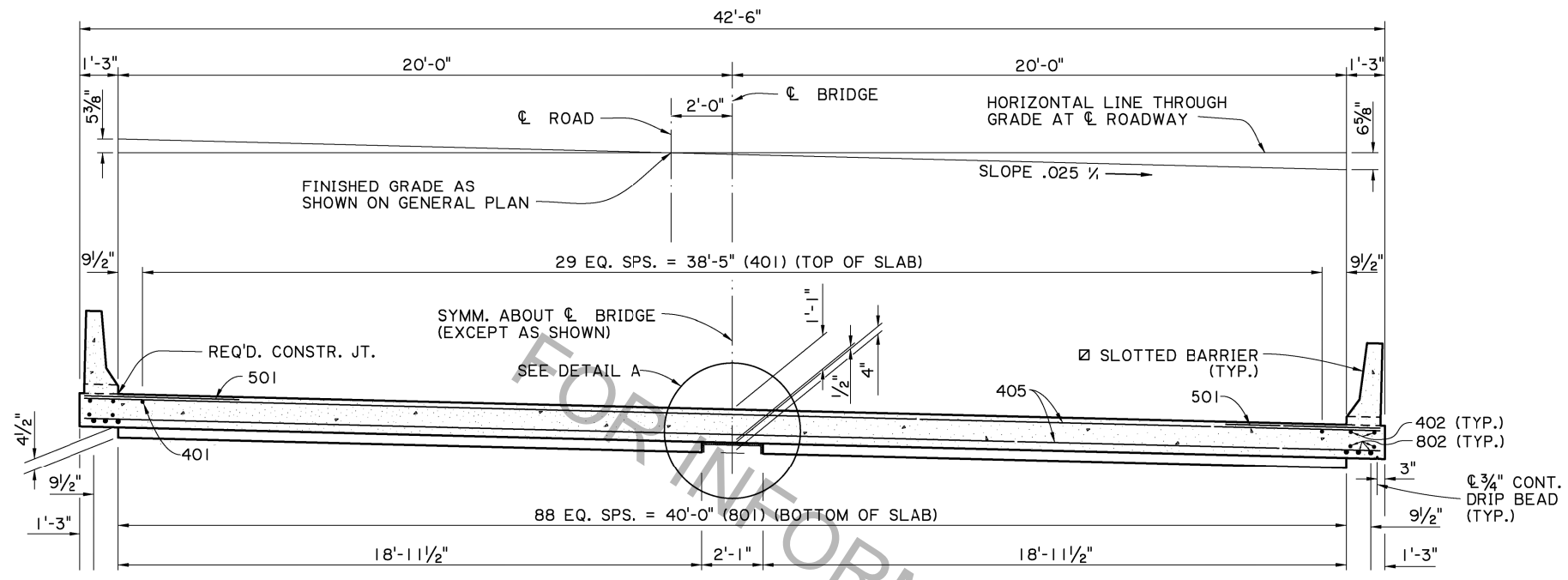
DATE _____

REVISION OR CHANGE ORDER DESCRIPTION: _____

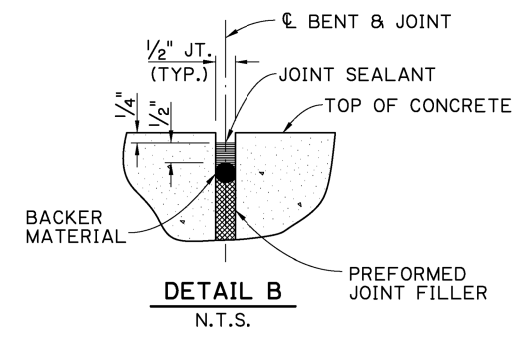
BY: _____

REINFORCED CONCRETE PILE BENT
 40'-0" CLEAR ROADWAY
 60' CROSSING ONE WAY TANGENT

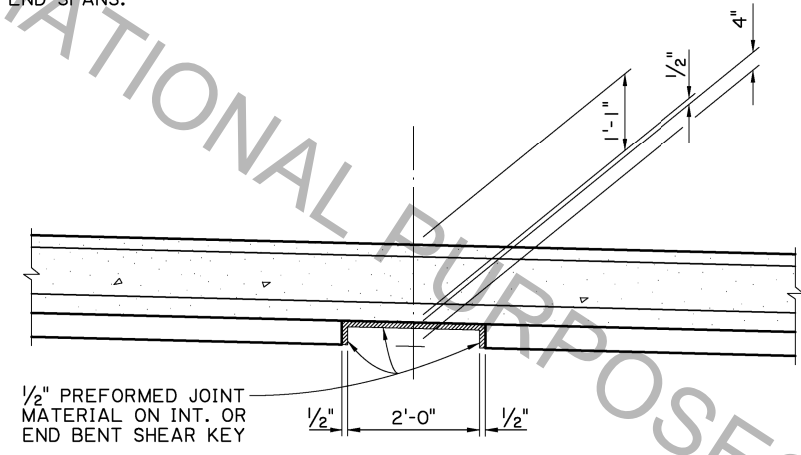
STANDARD DETAIL: BCSSBR-60-40T-20SL



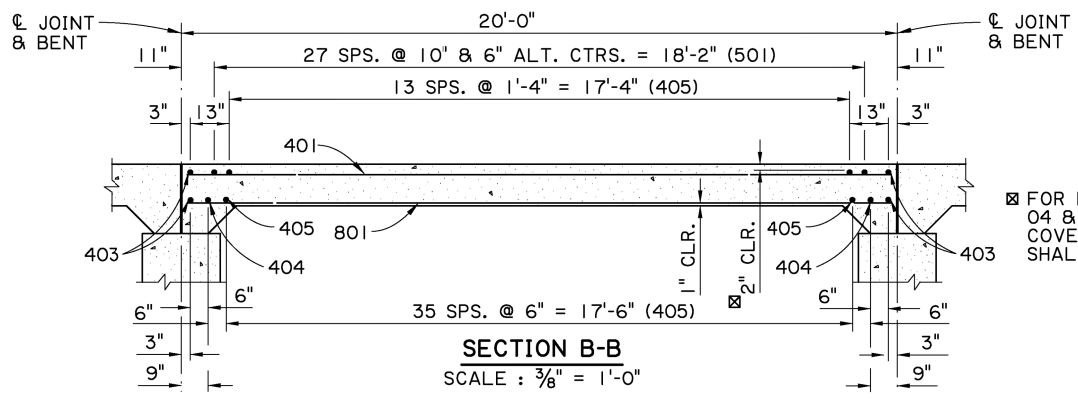
SECTION A-A
SCALE : 3/8" = 1'-0"
STANDARD BARRIERS REQUIRED ON END SPANS.



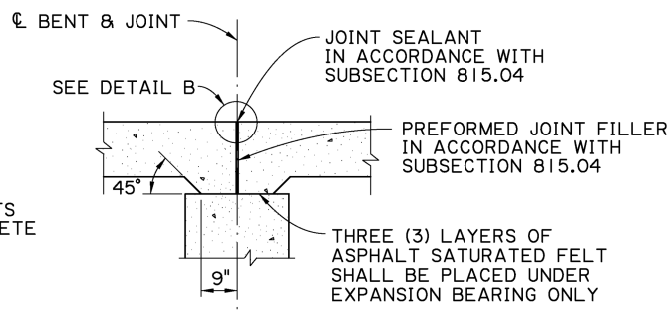
DETAIL B
N.T.S.



DETAIL A
SCALE : 3/4" = 1'-0"



SECTION B-B
SCALE : 3/8" = 1'-0"



DETAIL SHOWING TYPICAL JOINT
SCALE : 1/2" = 1'-0"

ESTIMATED QUANTITIES (ONE SPAN)				
BAR NO.	UNIT LENGTH	TOTAL LENGTH	LOCATION	
801	89	19'-6"	1735'-6"	LONGIT. BOT. OF SLAB
802	8	19'-7"	156'-8"	LONGIT. BOT. OF SLAB
TOTAL NO. 8 BARS = 1892'-2" = 5053 LBS.				
501	56	5'-0"	280'-0"	TRANS. TOP OF SLAB
TOTAL NO. 5 BARS = 280'-0" = 292 LBS.				
401	30	19'-6"	585'-0"	LONGIT. TOP OF SLAB
402	4	19'-7"	78'-4"	LONGIT. TOP OF SLAB
* 403	4	49'-2"	196'-8"	TRANS. TOP & BOT. OF SLAB
* 404	2	50'-2"	100'-4"	TRANS. BOT. OF SLAB
* 405	50	50'-4"	2516'-8"	TRANS. TOP & BOT. OF SLAB
TOTAL NO. 4 BARS = 3477'-0" = 2323 LBS.				
TOTAL DEFORMED REINFORCING STEEL = 7668 LBS.				
CLASS A1 CONCRETE = 39.15 CU. YDS.				
CONCRETE RAILING (BARRIER TYPE) = 40.00 LIN. FT.				

* INCLUDES ONE (1) 1'-8" MINIMUM LAP SPLICE. ALL LAP SPLICES ARE TO BE STAGGERED.

AS-DESIGNED RATING		
VEHICLE	RATING FACTOR	NOTES
HL-93 (INV)	1.410	---
HL-93 (OPR)	1.828	---
LADV-11 (INV)	1.085	MAGNIFICATION FACTOR = 1.3



Victor A. Sanchez
05/17/17

DESIGNED BY: J. NAKHLEH
CHECKED BY: B. DELATTE
PARISH: LA
CONTROL SECTION: 05/17/17
STATE PROJECT: 60-40T-20SL
SERIES #: 1 OF 2

NO. _____ DATE _____

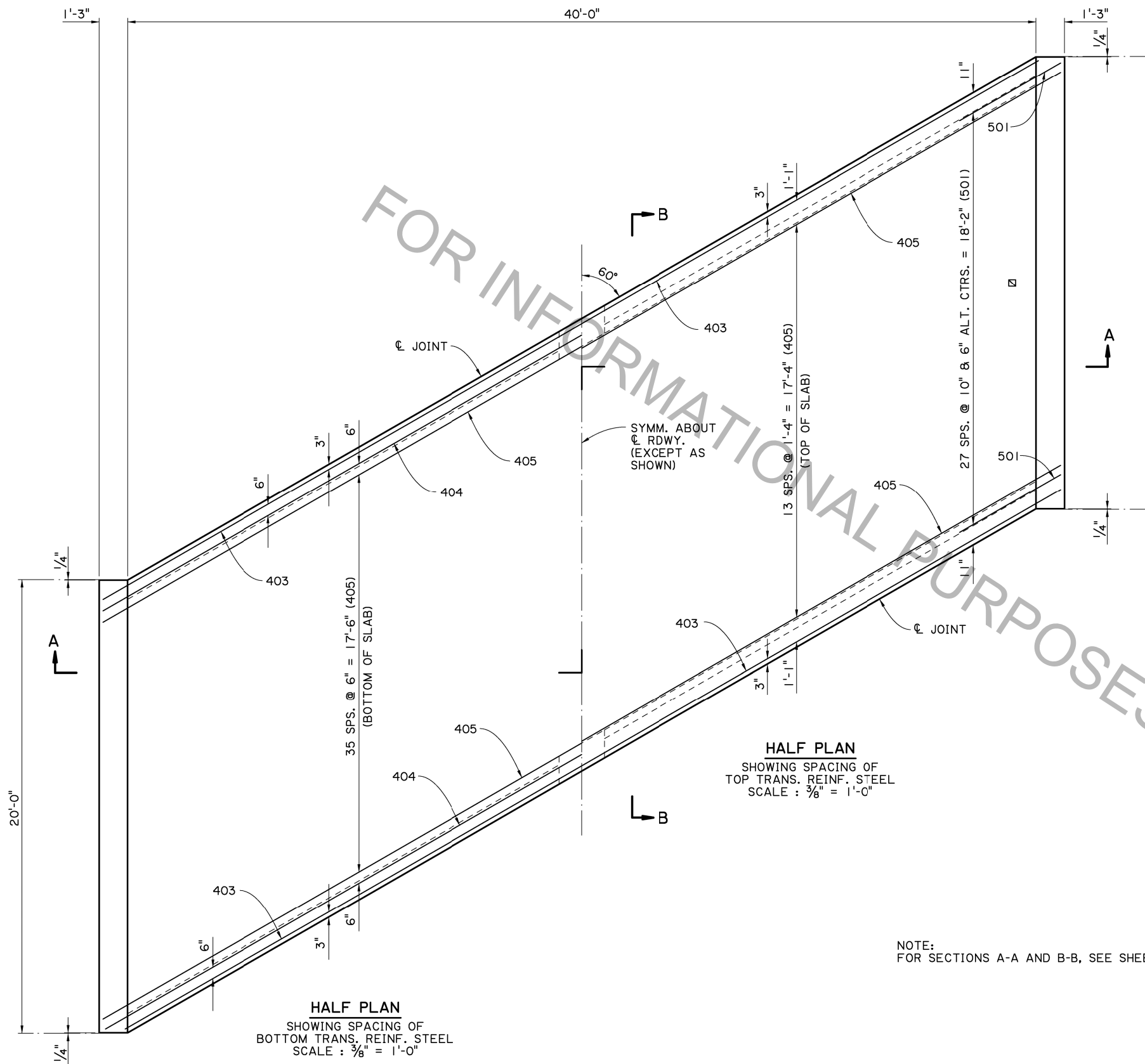
REVISION OR CHANGE ORDER DESCRIPTION _____

BY _____

STATE OF LOUISIANA
VICTOR A. SANCHEZ
License No. 33976
PROFESSIONAL ENGINEER
IN
CIVIL ENGINEERING

SPAN (1 OF 2)
20'-0" CONCRETE SLAB SPAN
40'-0" CLEAR ROADWAY
60° CROSSING ONE WAY TANGENT
STANDARD DETAIL
CSSBR-60-40T-20SL

DOTD
DOTD BRIDGE DESIGN



HALF PLAN
SHOWING SPACING OF
BOTTOM TRANS. REINF. STEEL
SCALE : $\frac{3}{8}'' = 1'-0''$

HALF PLAN
SHOWING SPACING OF
TOP TRANS. REINF. STEEL
SCALE : $\frac{3}{8}'' = 1'-0''$

SPAN NOTES:

CONSTRUCTION SPECIFICATIONS: LATEST APPROVED LOUISIANA STANDARD SPECIFICATIONS FOR ROADS AND BRIDGES, SUPPLEMENTAL SPECIFICATIONS AND SPECIAL PROVISIONS.

DESIGN SPECIFICATIONS: AASHTO LRFD BRIDGE DESIGN SPECIFICATIONS, 4th EDITION, WITH 2008 & 2009 INTERIMS.

DESIGN LOAD: THE BRIDGE DECK IS DESIGNED FOR A FUTURE WEARING COURSE OF 1.9 PSF. THE LIVE LOAD IS HL-93, AND LADV-11 (LOUISIANA DESIGN VEHICLE LIVE LOAD 2011).

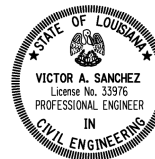
STRUCTURAL CONCRETE: ALL CONCRETE SHALL BE CLASS A1. EXPOSED EDGES SHALL HAVE A $\frac{3}{4}''$ CHAMFER UNLESS OTHERWISE NOTED. JOINT SEALANT, BACKER MATERIAL, PREFORMED JOINT FILLER, AND ASPHALT SATURATED FELT SHALL BE INCLUDED IN THE PRICE BID FOR CLASS A1 CONCRETE.

REINFORCING STEEL: ALL REINFORCING STEEL SHALL BE GRADE 60. DIMENSIONS RELATING TO SPACING ARE TO BAR CENTERS, DIMENSIONS RELATING TO FABRICATION ARE OUT TO OUT OF BARS UNLESS OTHERWISE NOTED. ALL REINFORCING BARS SHALL BE PLACED TO PROVIDE A MINIMUM COVER OF ONE INCH FROM THE SURFACE OF THE DRAIN HOLES TO THE FACE OF THE BARS EXCEPT FOR THE TRANSVERSE BARS WHICH MAY BE CUT FOR THIS PURPOSE.

GUARD RAIL: REFER TO THE GENERAL PLAN AND STANDARD PLAN BD.1.1.1.0.01 (GR-200) FOR GUARD RAIL REQUIREMENTS.

BARRIER RAILING: FOR BARRIER RAILING DETAILS, SEE STANDARD DETAIL BD.2.6.1.14.02 (BR-02).

\square NOTE:
STANDARD BARRIERS REQUIRED
ON END SPANS



Victor Sanchez
05/17/17

NOTE:
FOR SECTIONS A-A AND B-B, SEE SHEET 1 OF 2.

FOR INFORMATIONAL PURPOSES ONLY

SHEET NUMBER		PARISH		CONTROL SECTION		STATE PROJECT	
		J. NAKHLEH		J. NAKHLEH		05/17/17	
DESIGNED		CHECKED		REVIEWED		SERIES #	
J. NAKHLEH		J. NAKHLEH		D. HEMEL		2 OF 2	
NO. DATE							
REVISION OR CHANGE ORDER DESCRIPTION							
BY							
SPAN (2 of 2) 20'-0" CONCRETE SLAB SPAN 40'-0" CLEAR ROADWAY 60" CROSSING ONE WAY TANGENT STANDARD DETAIL CSSBR-60-40T-20SL							
DOTD BRIDGE DESIGN							