

TYPE 1

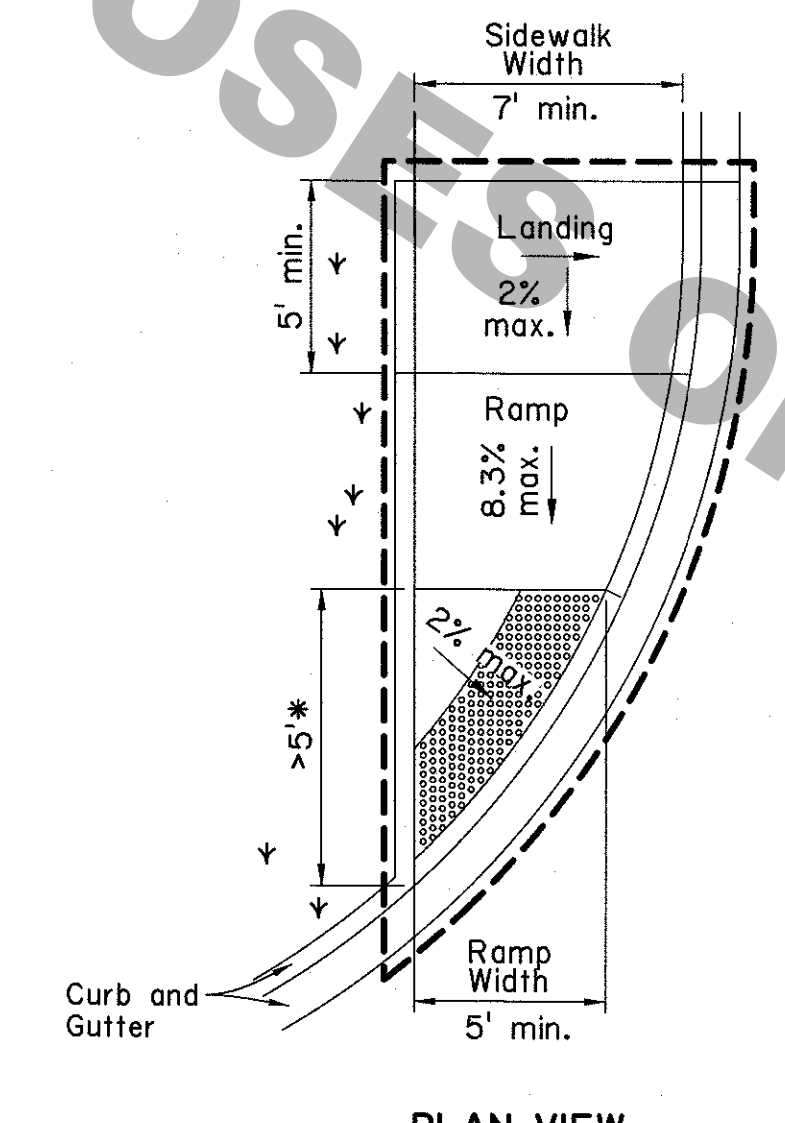
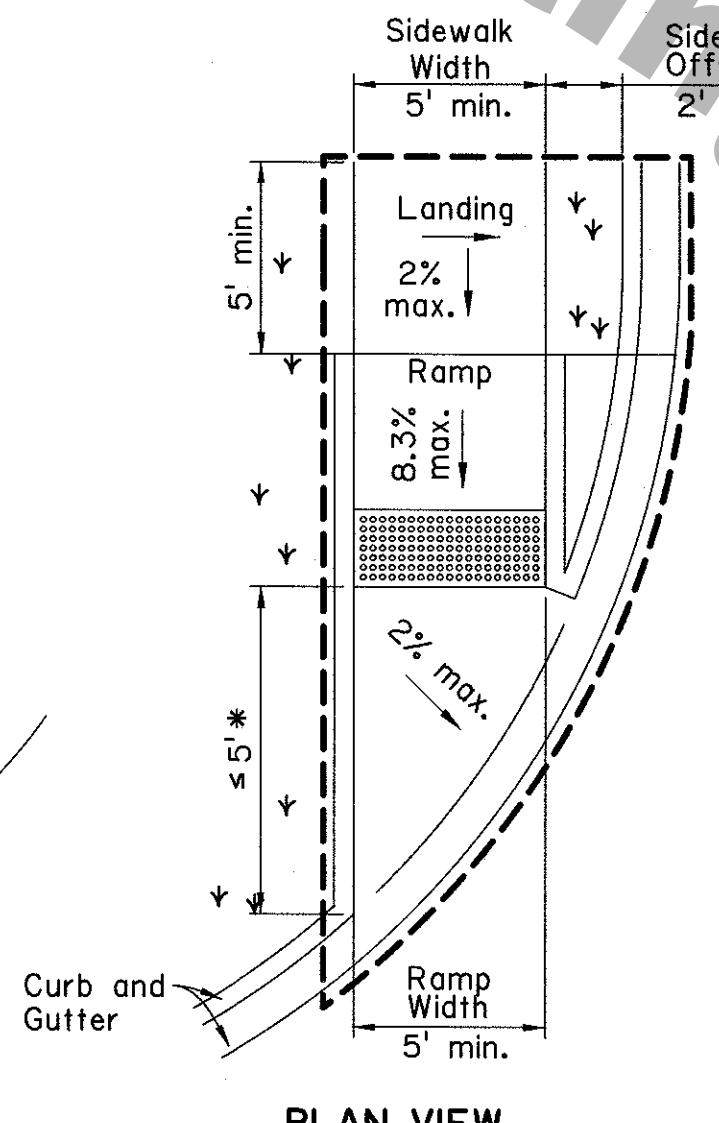
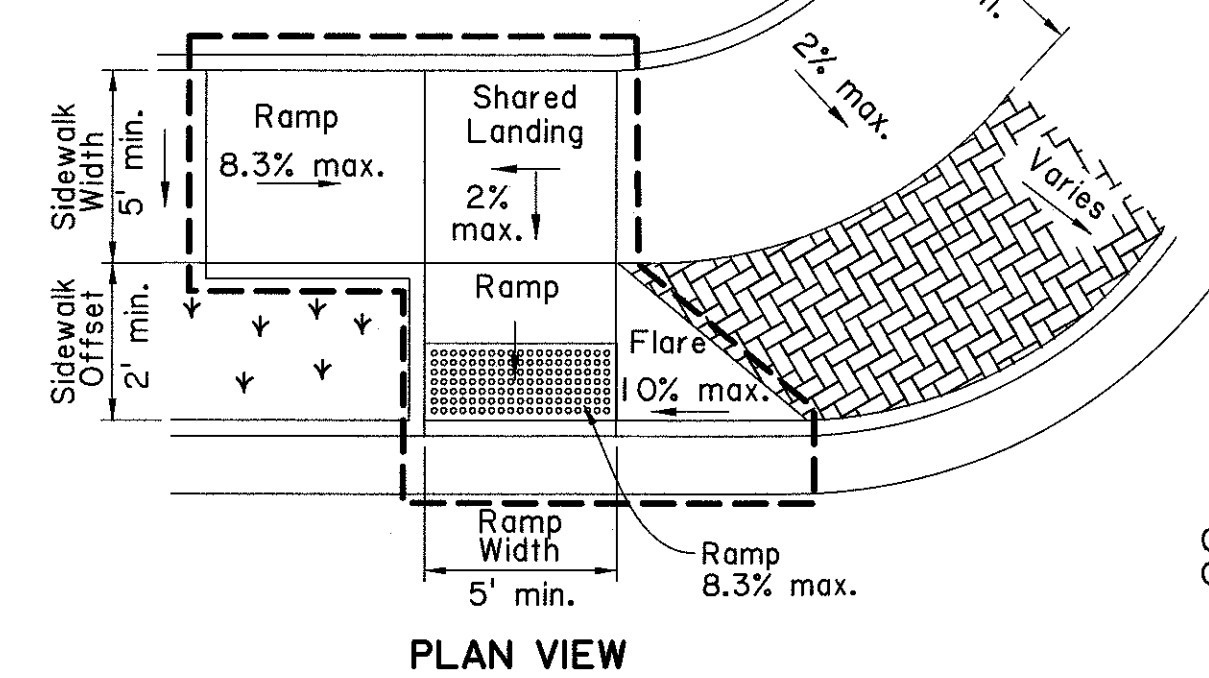
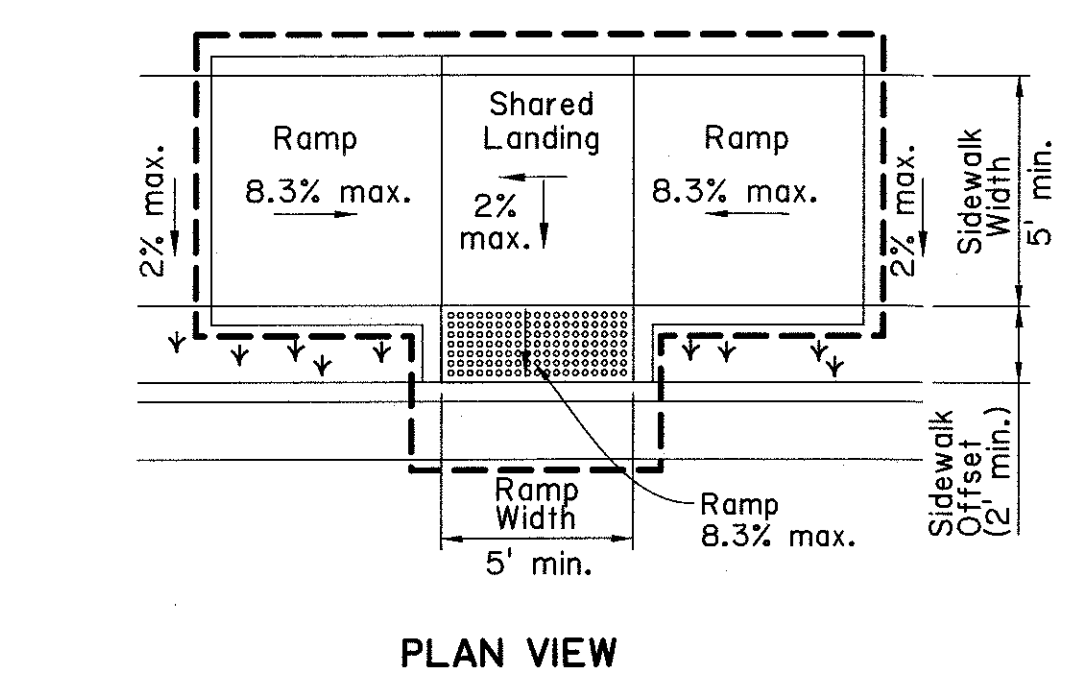
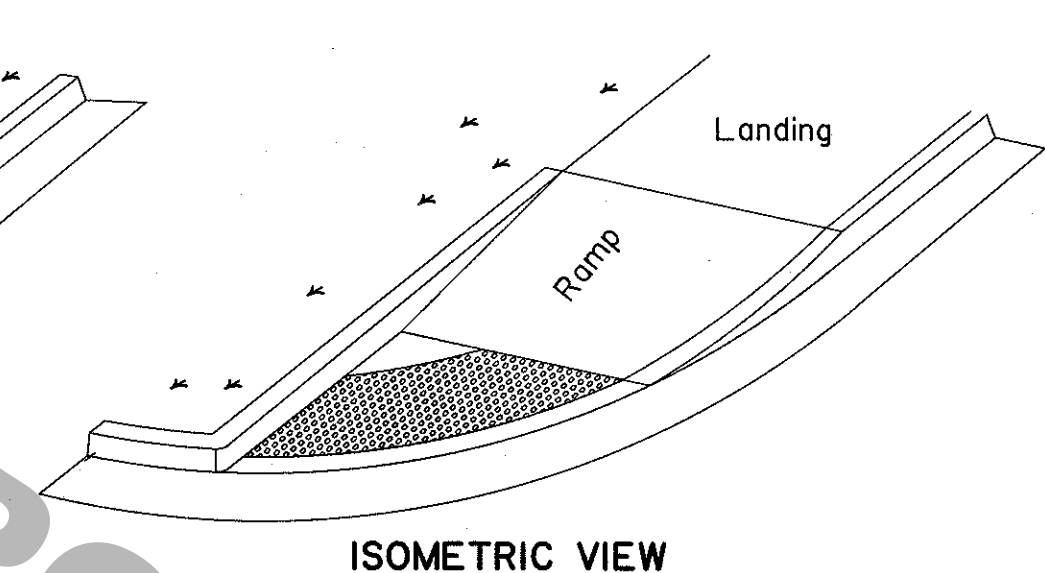
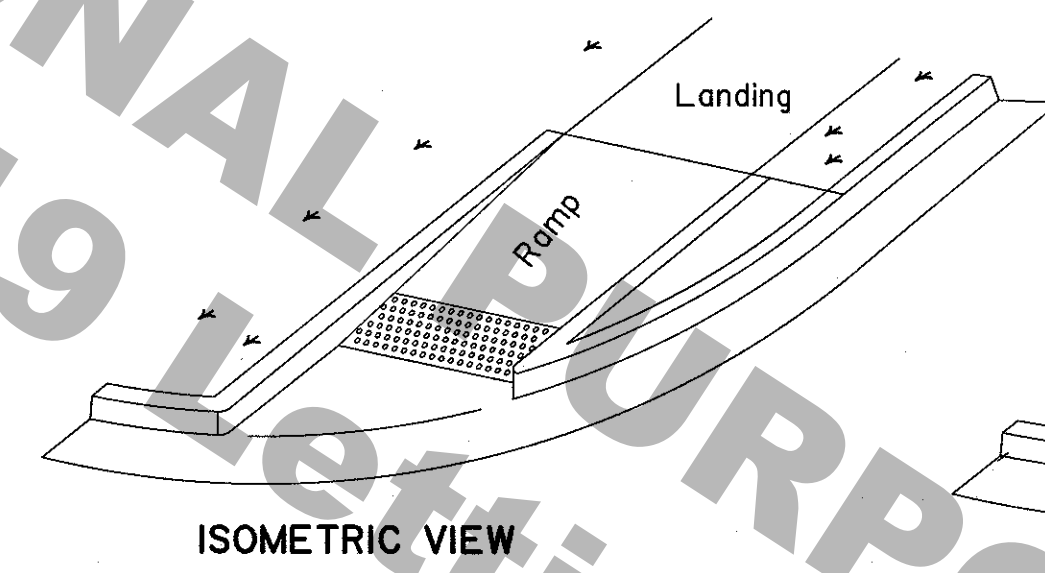
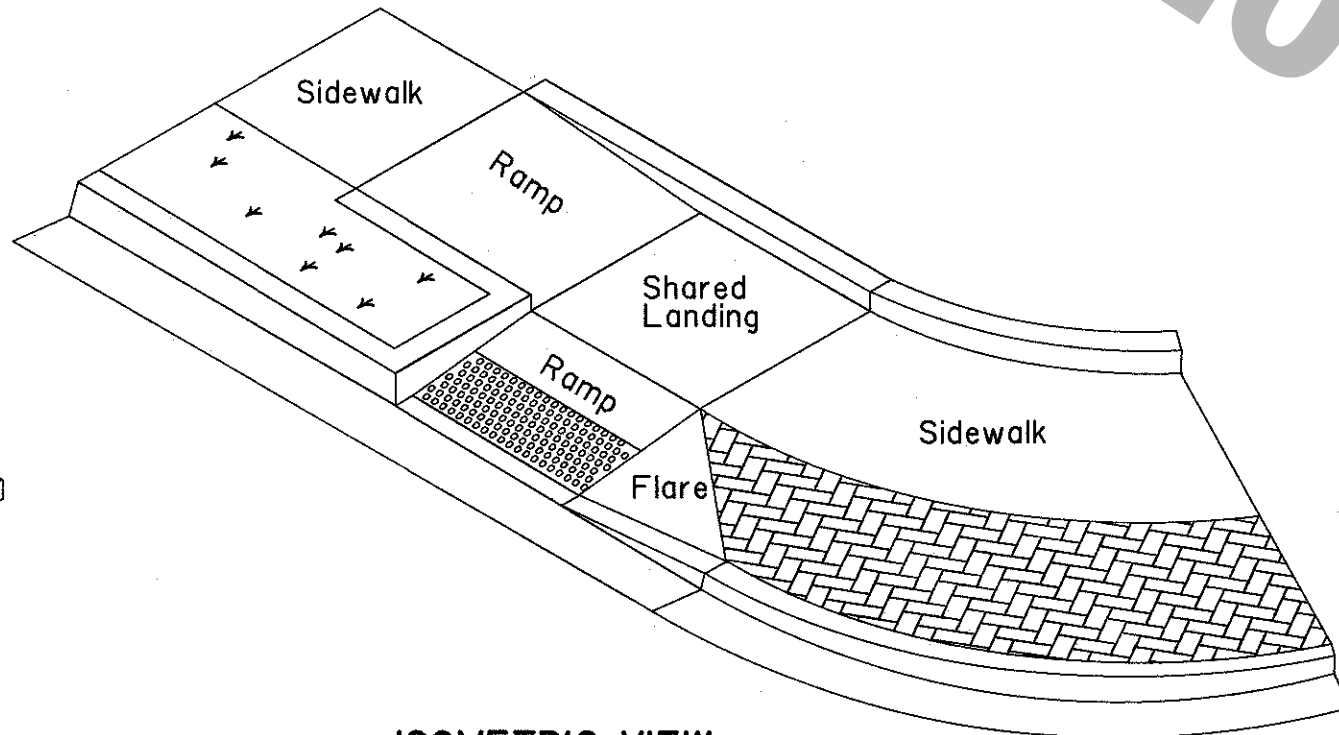
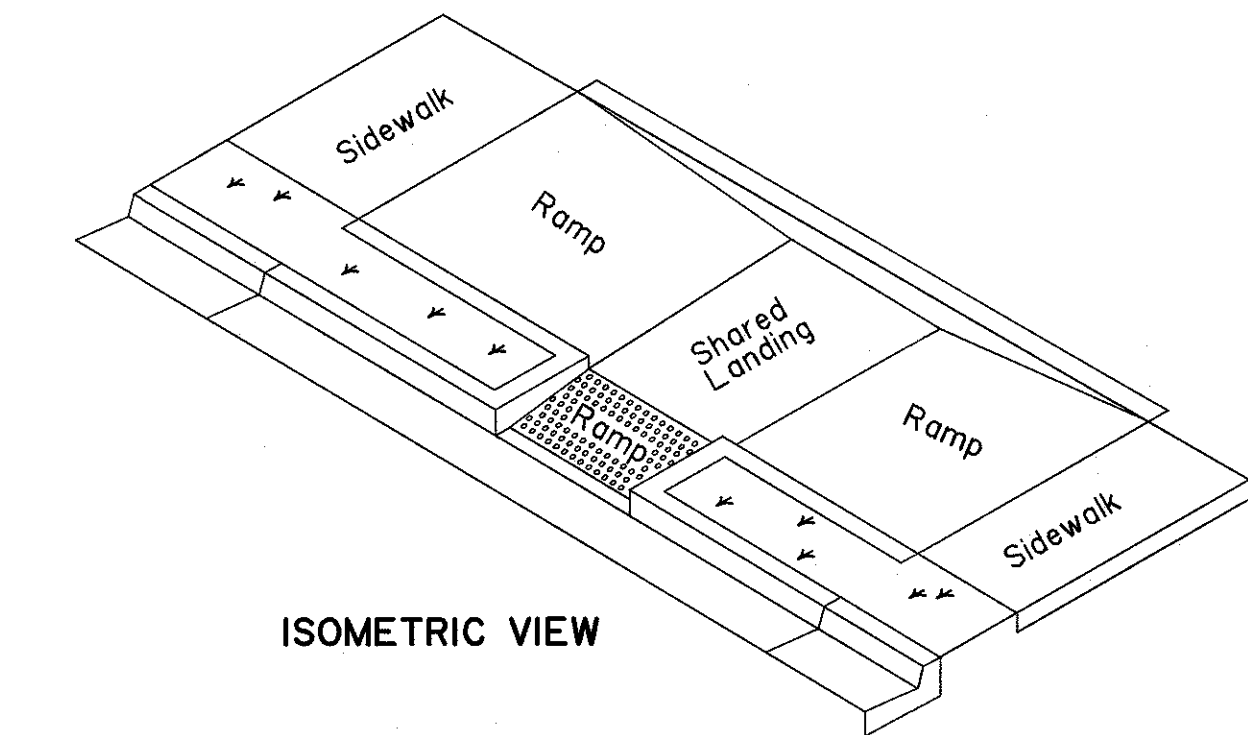
TYPE 2

TYPE 3

TYPE 4

PERPENDICULAR CURB RAMPS
 If a level landing of at least 3' cannot be provided, a perpendicular curb ramp should not be used.

PARALLEL CURB RAMPS



TYPE 5

TYPE 6

TYPE 7

TYPE 8

COMBINATION CURB RAMPS

DIRECTIONAL CURB RAMPS

LEGEND OF PATTERNS

- Denotes Non-Walking Surface Not Part of Pedestrian Path
- Detectable Warning Surface
- Limits of Payment
- Non-ADA Compliant Walking Surface
- Slope

All slopes shown are maximum allowable. The least possible slope that will drain properly should be used.
 Curb ramps shall be placed and designed where ponding does not occur at the bottom or on the curb ramp.

* Where the grade break is less than or equal to 5' from the back of curb, place detectable warning surface as shown in Type 7. Where grade break is greater than 5' from the back of the curb, place detectable warning surface as shown in Type 8.

SHEET NUMBER		PARISH		CONTROL SECTION		STATE PROJECT	
DESIGN	CHECK	DESIGN	CHECK	DESIGN	CHECK	DESIGN	CHECK
IMAL	BPW	IMAL	BPW	IMAL	BPW	IMAL	BPW
APPROVED BY CHIEF ENGINEER:				DATE:			
				MELISSA LEBAS License No. 39111 PROFESSIONAL ENGINEER IN CIVIL ENGINEERING Melissa Lebas 6/12/19			
PEDESTRIAN FACILITIES CURB RAMPS AND DETECTABLE WARNING LOCATION				PED-01			
ROAD DESIGN							