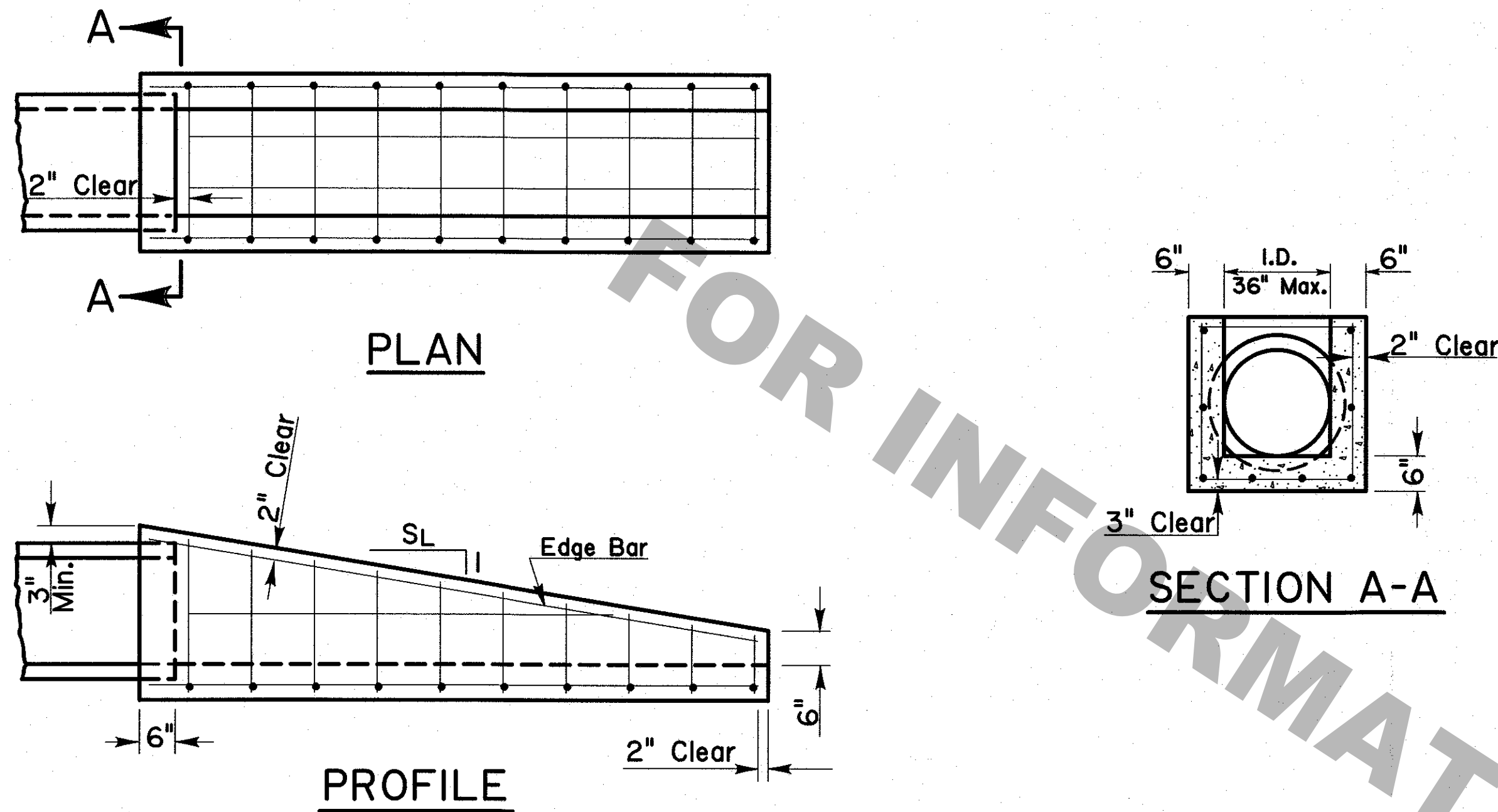
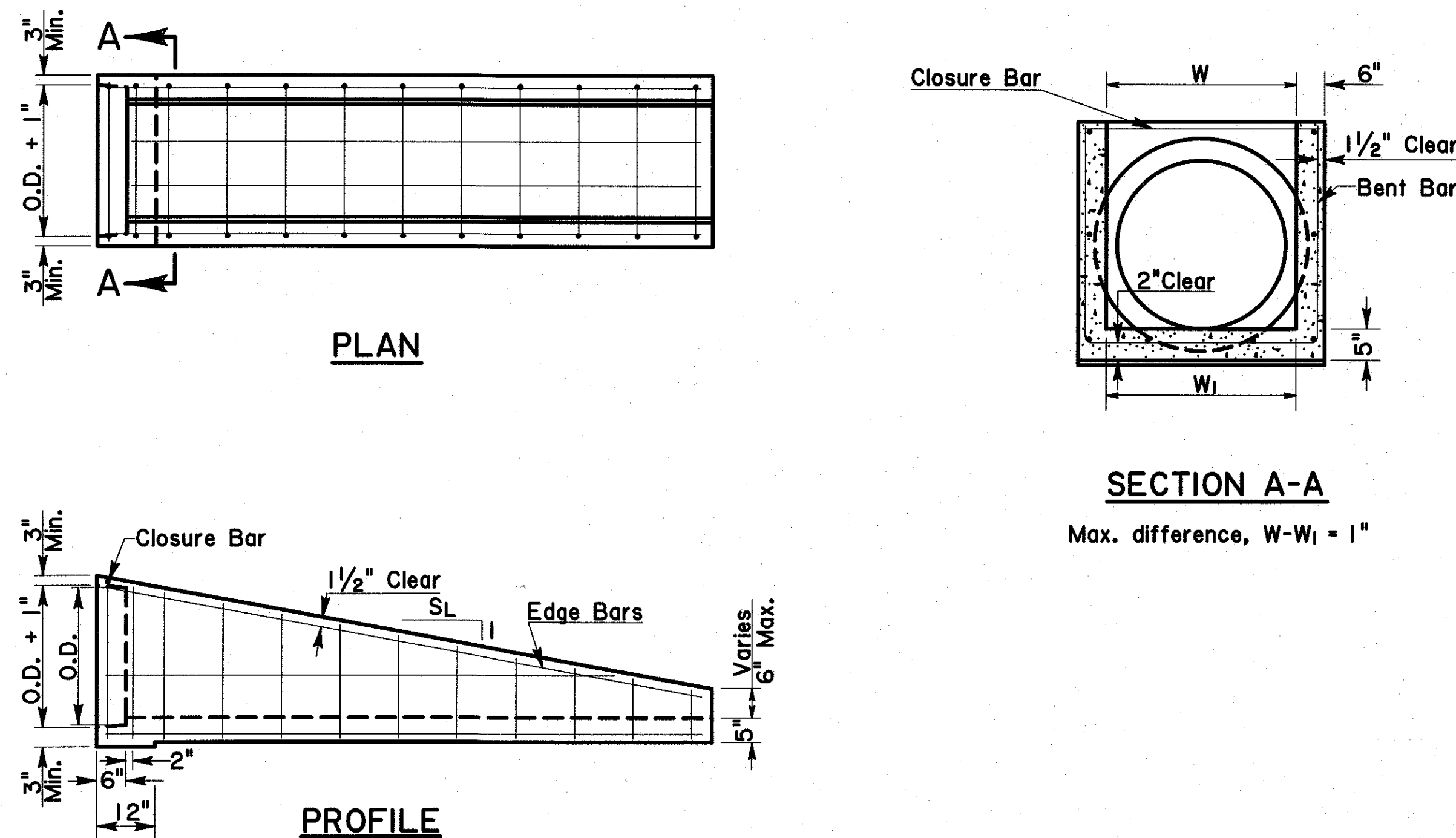


CAST-IN-PLACE ALTERNATE

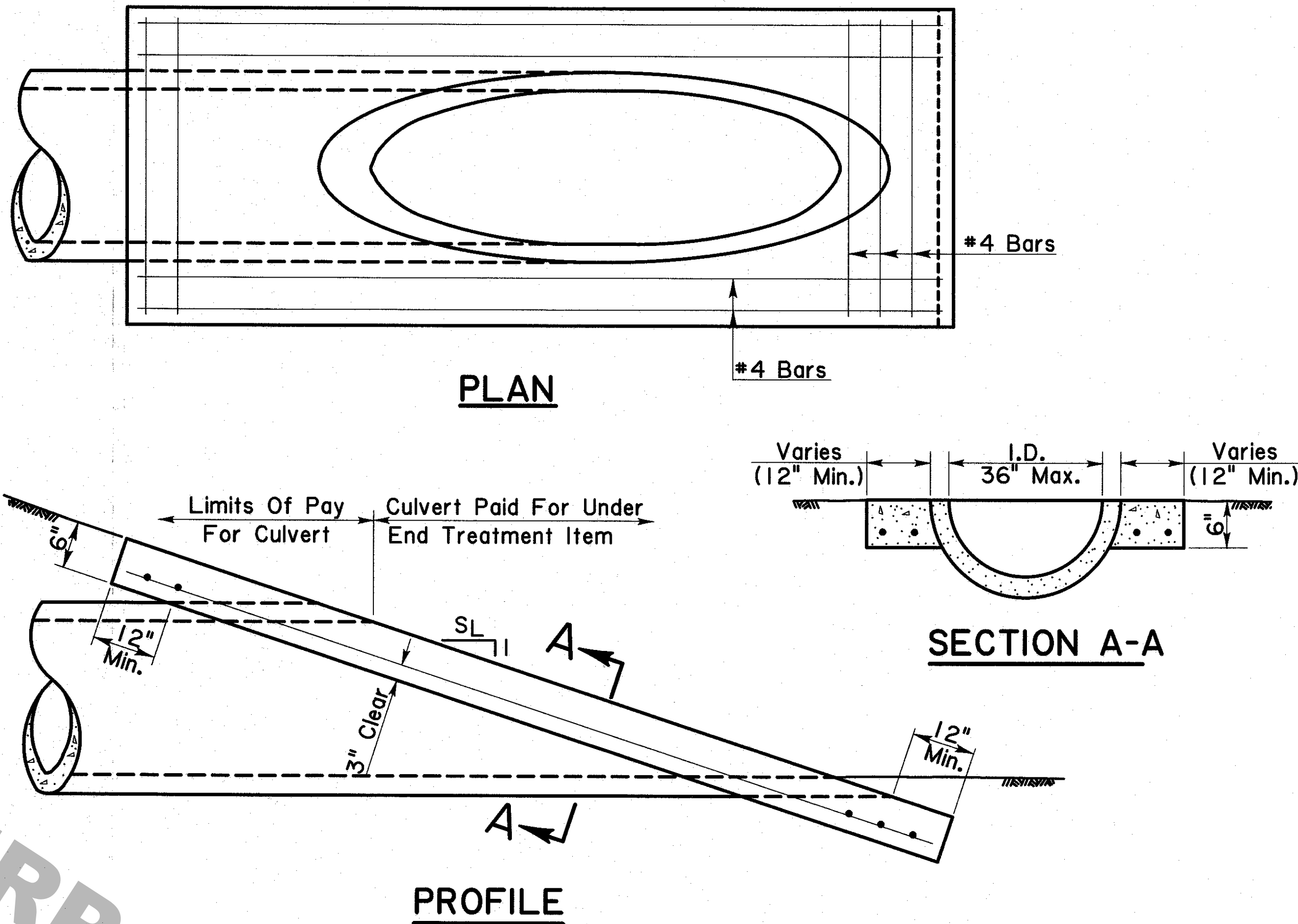


PRECAST ALTERNATE

- Notes:
1. RCP bell ends which exceed the normal pipe outside diameter (O.D.) shall be removed.
  2. Pipe connections shall be sealed with flexible joint sealant.
  3. Exposed corners may be chamfered  $\frac{3}{4}$ ".



MITERED PIPE ALTERNATE



- Notes:
1. Mitered Pipe Alternate shall be fabricated from pipe. Cut edge of pipe to be hand finished or cast into concrete slope.

- General Notes: (Cast-In-Place, Precast & Mitered Pipe Alternate)
- 1) While a RCP culvert is detailed, this Safety End shall also be used with RCPA, CMP, CMPA, and RCB culverts. Multiple culverts require multiple Safety Ends.
  - 2) Slope of Safety End walls (SL:1) shall match the required sideslope. If no sideslope is given, a slope of 4:1 shall be required.
  - 3) The Safety End shall be cast-in-place or precast concrete units and shall be in accordance with Section 702 of the LA DOTD Standard Specifications.
  - 4) Concrete to be Class A1 and reinforcing steel to be #4 Grade 60.
  - 5) Reinforcing steel at 9" maximum centers unless detailed otherwise.

6-12-18	Revised Precast To Uniform 6" Wall Thickness	AMA
1-16-98	Added Special Detail Name SETCRDI	JCM
10-27-97	Added Limits Of Pay For Culvert	JCM
9-27-93	General Revisions	WMR
7-10-92	Revised General Notes & Notes	PAA
6-22-92	Removed Sack Alternate, added Precast & Mitered Pipe Alternate, revised Cast-In-Place	PAA
8-5-91	General Revisions	PAA
DATE	DESCRIPTION	BY
REVISIONS		

SPECIAL DETAIL NO. SETCRDI		SHEET 1 OF 1
CROSS DRAIN SAFETY END - TYPE I		
Maximum Pipe Sizes: 36" RCP, 36" CMP, 30" Eq. RCPA, 30" Eq. CMPA		
DATE April 22, 1991		
STATE OF LOUISIANA DEPARTMENT OF TRANSPORTATION AND DEVELOPMENT		
DESIGNED PAA	DETAILED KAJ	DIR. spdetail/sofyyend
CHECKED PAA	FILE setcrd1.dgn	
HYDRAULICS SECTION		