

LEGEND

Flashing Arrow Board (Type 'C')

Work Area

Direction of Travel

Work Vehicle

Police Vehicle with Flashing Lights

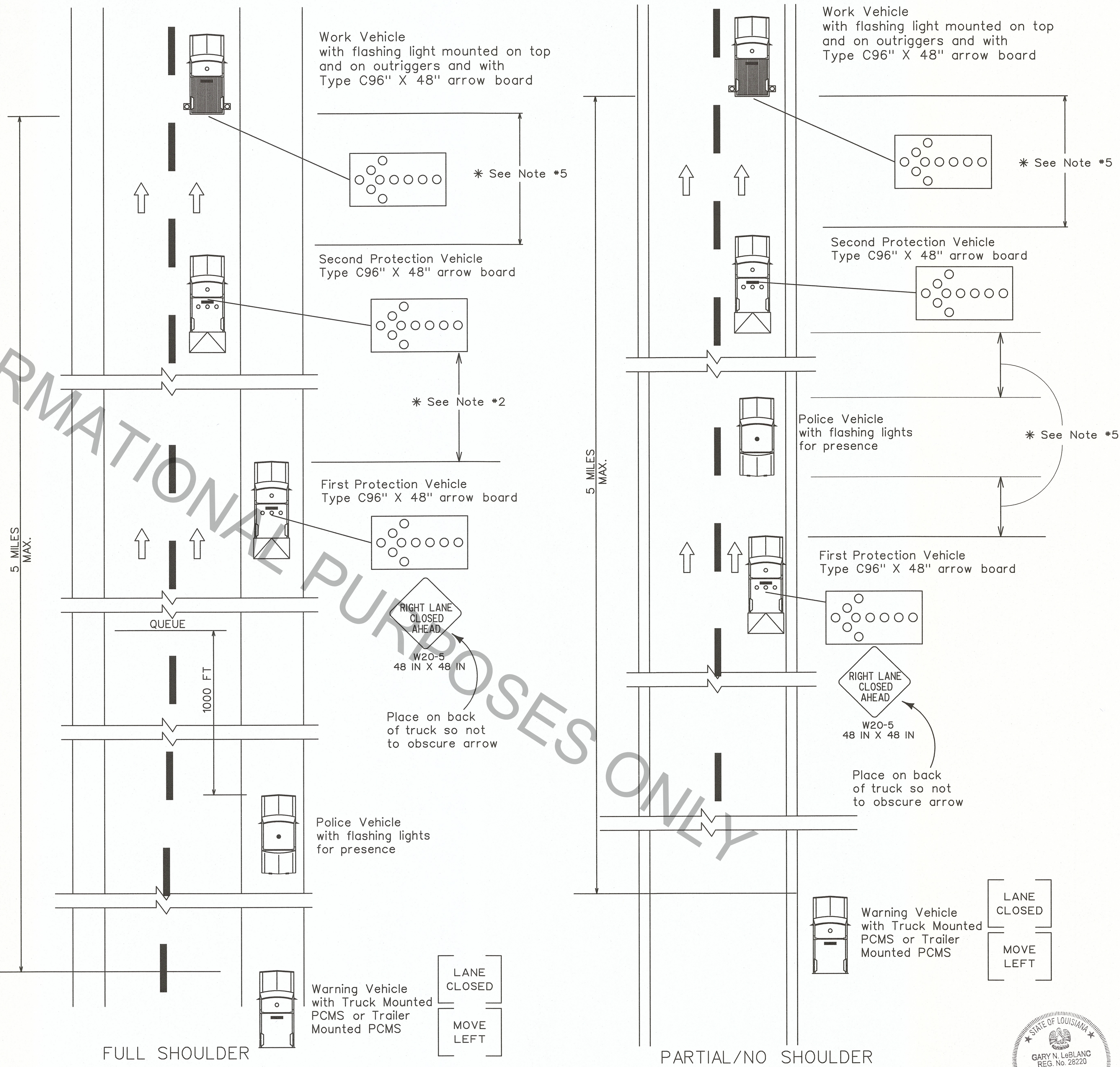
Truck with Amber Light and TMA

Warning Vehicle with PCMS

NOTES

- This sheet shall be used with the Temporary Traffic Control General Notes Sheets TTC-00(A), TTC-00(B) and TTC-00(C).
1. This layout represents the minimum traffic controls required for moving operations, such as striping, street sweeping, etc., on interstates and multi-lane roadways. This layout shall not be used for placing signs or pavement legends along the roadway.
 2. Distances between vehicles shall vary and should be adjusted due to drying time and sign obstructions such as overpasses and hills.
 3. Striping operation is shown for the right lane. Left lane operation is the same, but opposite. If the roadway is greater than 2 lanes, a traffic control plan will be designed.
 4. If a queue greater than 30 minutes (about 2 miles) exists, the contractor shall cease operations and pull over to the shoulder until the queue dissipates.
 5. The protection vehicles shall be equipped with a flashing amber light and a truck mounted attenuator. This vehicle shall move with work operations not to exceed the roll-ahead distance required by the manufacturer plus 100 feet.

ALL TTC STANDARDS SHOW MINIMUM CONSTRUCTION SIGNING.
ALL SITUATIONS SHALL BE REVIEWED AND/OR DESIGNED BY THE ENGINEER.
CONTRACTORS ARE RESPONSIBLE FOR COMPLYING WITH ALL TTC STANDARDS.



SHEET NUMBER	
DESIGNED BY	PARISH
CHECKED BY	LEBLANC
DATE	7/2/18
REVISION OR CHANGE ORDER DESCRIPTION	BY
APPROVED BY	CHIEF ENGINEER
TEMPORARY TRAFFIC CONTROL MOVING OPERATIONS FOR INTERSTATE AND MULTI-LANE ROADWAYS	
TTC-17	
DOTD	
TRAFFIC ENGINEERING	