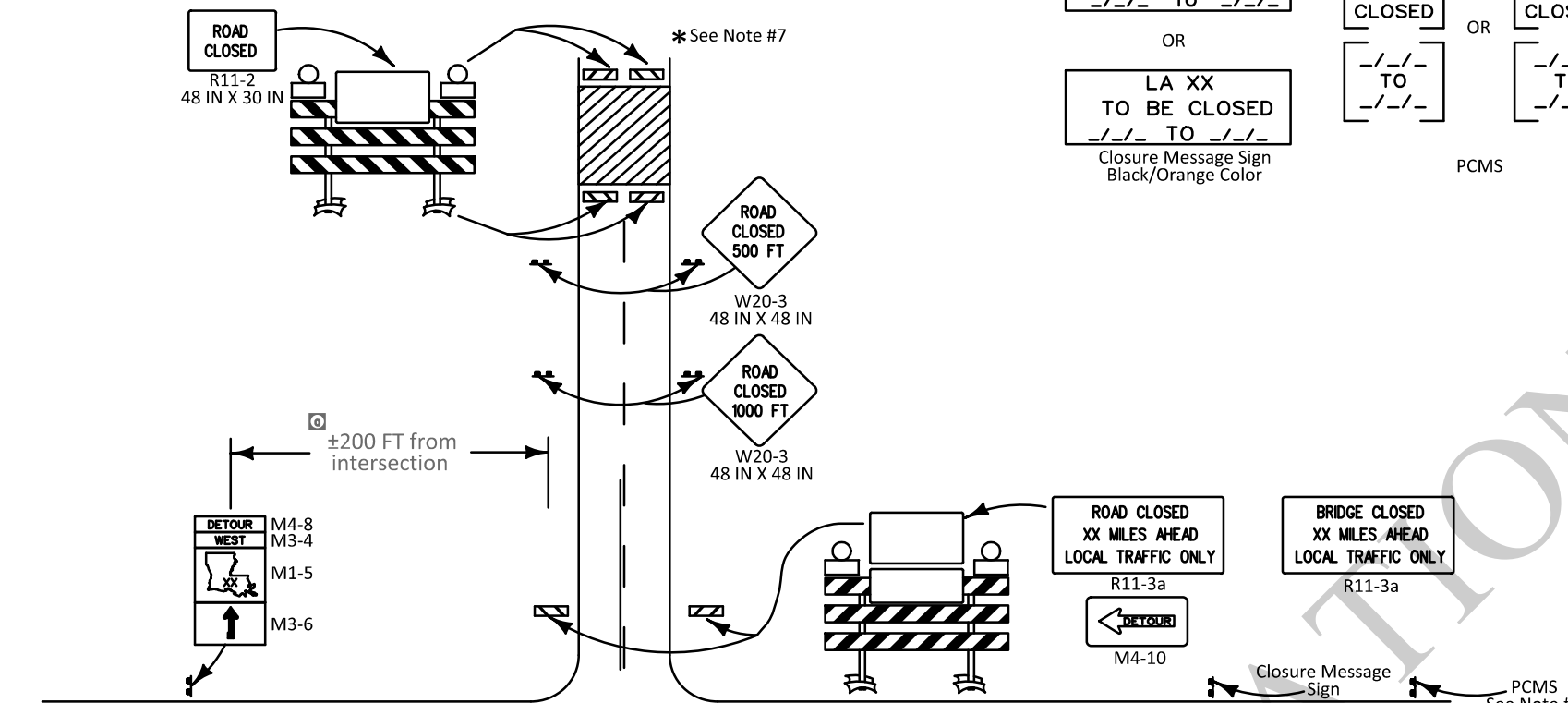
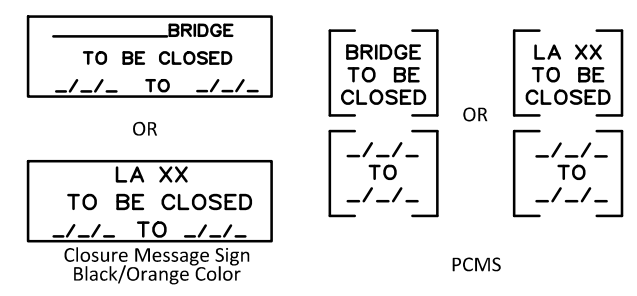


### ADVANCE WARNING SIGN DURING ROAD CLOSURE



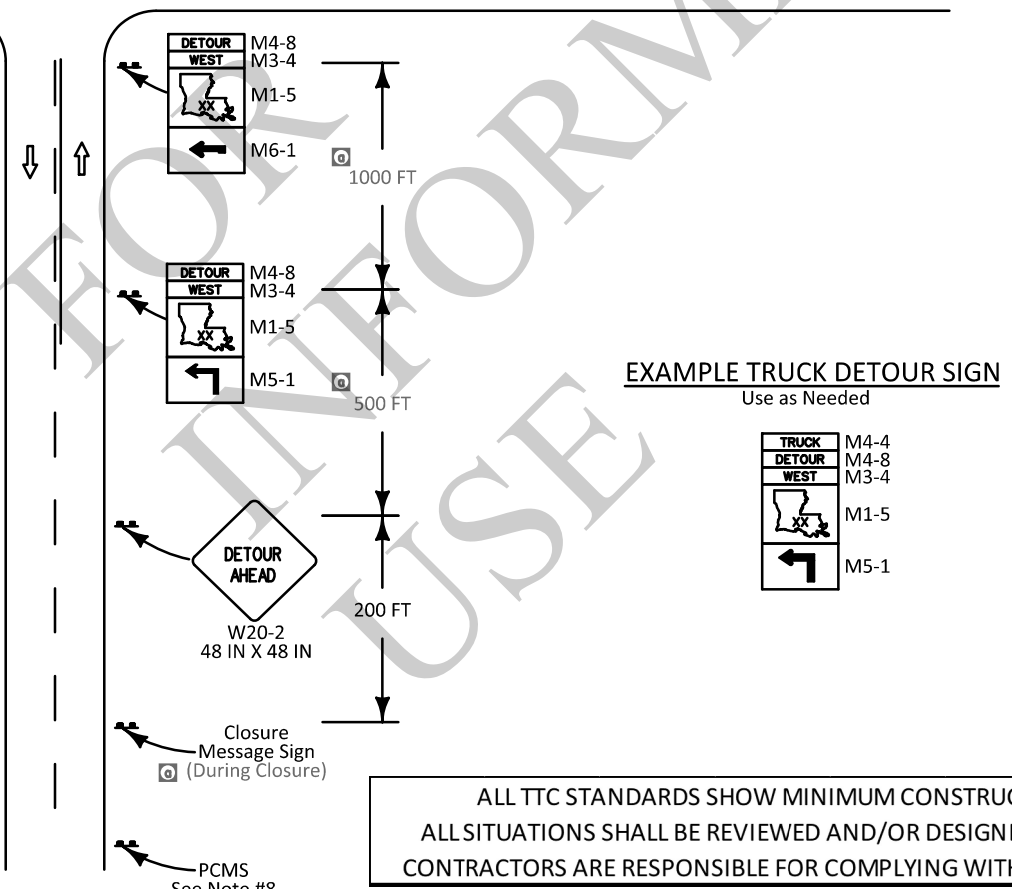
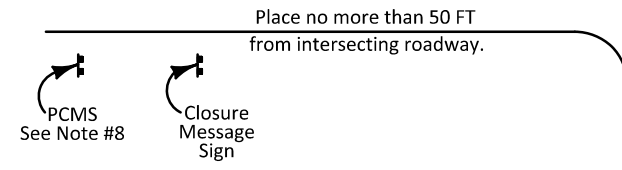
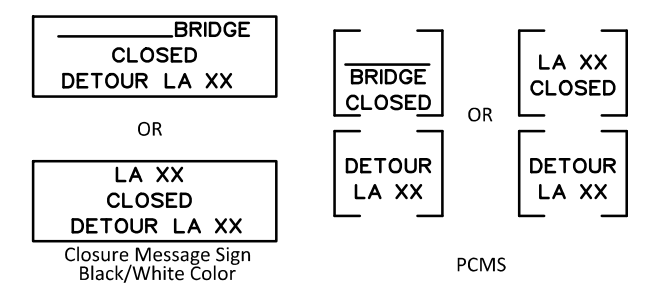
### 7 DAYS PRIOR TO ROAD CLOSURE

See Note #4 and #8



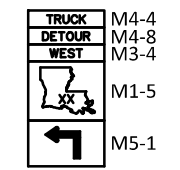
### DURATION OF ROAD CLOSURE

See Note #4 and #8



### EXAMPLE TRUCK DETOUR SIGN

Use as Needed



ALL TTC STANDARDS SHOW MINIMUM CONSTRUCTION SIGNING.  
 ALL SITUATIONS SHALL BE REVIEWED AND/OR DESIGNED BY THE ENGINEER.  
 CONTRACTORS ARE RESPONSIBLE FOR COMPLYING WITH ALL TTC STANDARDS.

### NOTES

- This sheet shall be used with the Temporary Traffic Control General Notes Sheets TTC-00(A), TTC-00(B), TTC-00(C), and other Temporary Traffic Control Sheets as appropriate.
- Any signs in conflict with detour signing shall be removed or covered.
- Closure Message Sign or PCMS shall be placed 7 days prior to road closure on all approaches to the closure. This sign shall be placed no farther than 50 FT from the work area to be closed.
- Closure Message Sign or PCMS shall be placed on all approaches to the closure for the duration of the road closure. Minimum letter size on static signs shall be 8 inches.
- Detour routes shall only be state-maintained routes, unless the project manager has made an agreement with the road owner.
- Not all detour signs are shown. The DTOE shall approve all detours. The contractor shall be responsible for placing and maintaining all detour signs. There should be a sign at every decision point.
- The signing is to be mirrored in the opposite direction.
- PCMS shall be used in addition to the closure message sign on all highways with an ADT greater than 20,000. Place at a location approved by the Engineer.
- A complete detour map shall be included with the set of plans. If there are changes in the routing, including changes that only affect truck traffic, then the contractor will need to submit them to the Engineer for approval.

### LEGEND

- Direction of Travel
- ⊣ Traffic Sign

SHEET NUMBER		PARISH		CONTROL SECTION		STATE PROJECT		
DESIGN	G. Dunn	CHECK	B. Boucher	DETAIL	G. Dunn	CHECK	B. Boucher	
REVIEW		REVIEW		REVIEW		REVIEW		
APPROVED BY CHIEF ENGINEER							DATE:	3/11/2026
Numbers adjusted and text added							REVISION OR CHANGE ORDER DESCRIPTION	BY
							6-12-25	DATE
							NO.	
TEMPORARY TRAFFIC CONTROL FOR ROAD CLOSURES							TTC-16 STANDARD PLAN	