



New Orleans District US Army Corps of Engineers

CURRENT Authority Meeting

May 7, 2026

COL Scotty Autin
Commander
US Army Corps of Engineers
New Orleans District



U.S. ARMY



US Army Corps
of Engineers



USACE Civil Works Business Lines



Flood Risk Management



Environment



Navigation



Recreation



Hydropower



Water Supply



Emergency Management



U.S. ARMY



US Army Corps of Engineers®



US Army Corps of Engineers



US Army Corps of Engineers®

Corps Districts in Louisiana



U.S. ARMY



US Army Corps
of Engineers®



New Orleans District Value to the Nation

5 of the nation's 15 busiest ports

2,800 miles of navigable waterways

18 locks & control structures

973 miles of MR&T levees

15 pumping stations

325 miles of hurricane risk reduction levees

13 recreation areas

8,000 annual regulatory actions



U.S. ARMY



US Army Corps of Engineers



Deepwater ports along the Mississippi River, from Baton Rouge to the Gulf, collectively form the largest tonnage port in the Western Hemisphere.

- FY24 Expenditures: \$1.08B
 - Represented 10% of USACE Civil Works Portfolio
- \$11.9B Federal Investment in S. Louisiana since 2012



New Orleans District Overview

5 of the nation's 15 busiest ports

2,800 miles of navigable waterways

18 locks & control structures

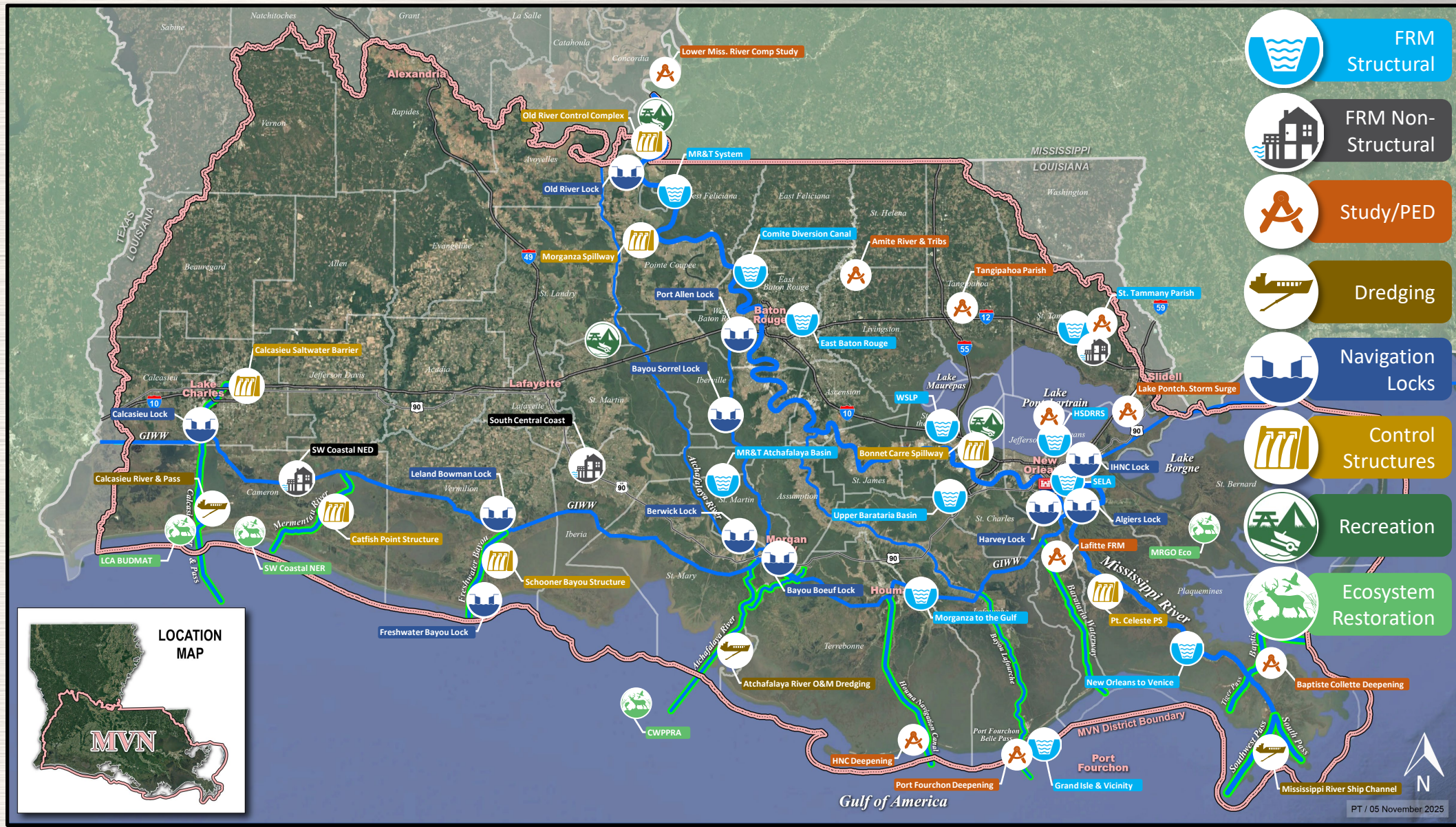
973 miles of MR&T levees

15 pumping stations

325 miles of hurricane risk reduction levees

13 recreation areas

8,000 annual regulatory actions



- FRM Structural
- FRM Non-Structural
- Study/PED
- Dredging
- Navigation Locks
- Control Structures
- Recreation
- Ecosystem Restoration



U.S. ARMY



US Army Corps of Engineers®

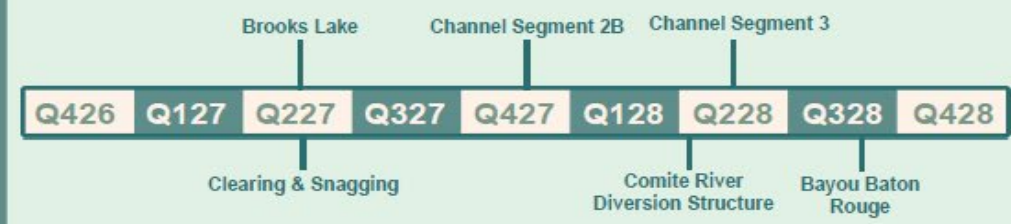
Comite River Diversion Canal



Path Forward to Project Completion

- ✓ Bayou Baton Rouge – Expected completion Q32028 (1087 Day Duration)
- ✓ Channel Segment 3 – Expected completion Q22028 (775 Day Duration)
- ✓ Channel Segment 2B – Expected completion Q42027 (517 Day Duration)
- ✓ Comite River Diversion Structure – Expected completion Q22028 (870 Day Duration)
- ✓ Brooks Lake Closure – Expected completion Q22027 (380 Day Duration)
- ✓ Clearing and Snagging – Expected completion Q22027 (360 Day Duration)

Construction Completion Schedule

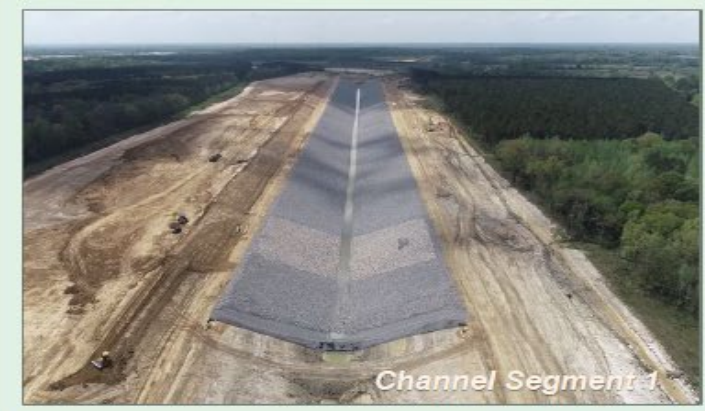


Construction Status & Remaining Contracts



Comite River Diversion Overview

- | 20 USACE contracts | 3 LADOTD |
|--|--|
| <ul style="list-style-type: none"> • 20 of 20 contracts awarded • 13 construction contracts complete • 7 contracts under construction | <ul style="list-style-type: none"> • 3 of 3 contracts awarded • 2 construction contracts complete • 1 contract under construction |



KCS Railroad & LA 61 Bridges Channel Segment 1



Channel Segment 4 Construction



Florida Gas 30" High Pressure Gas Pipeline Channel Segment 3



Completed East Baton Rouge Forced Sewer Main Relocation Channel Segment 1



AMITE RIVER & TRIBUTARIES

Purpose:

- Evaluate alternatives to reduce flood damages from rainfall

Non-Federal Sponsor:

- LaDOTD

Recommended Plan:

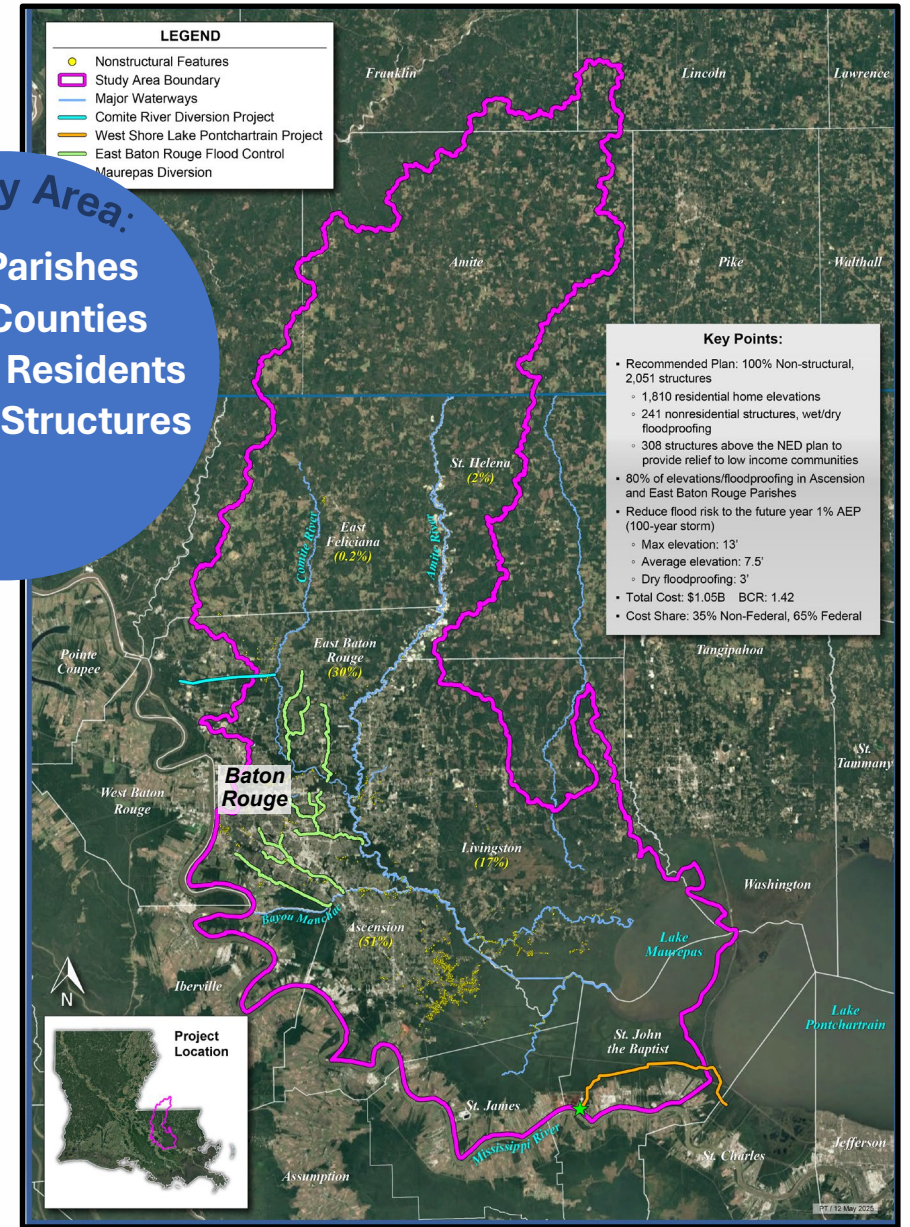
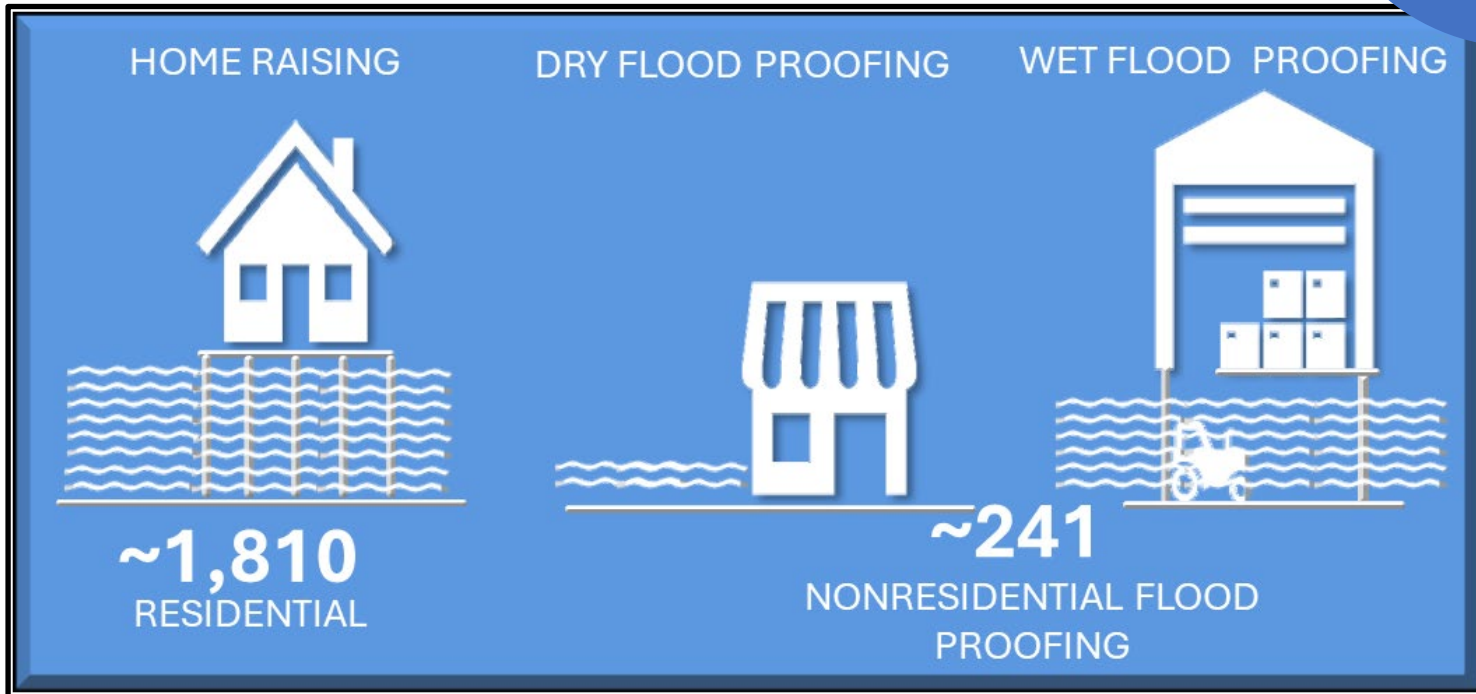
- Elevate/Floodproof 2,050 structures

Preliminary cost:

- \$1.1B

Study Area:

- 8 LA Parishes
- 3 MS Counties
- 800,000 Residents
- 250,000 Structures



ALEXANDRIA TO THE GULF

Study Authority: Water Resources Development Act of 2024 Section 1202(4)

Purpose:

- Evaluate alternatives for flood control, navigation, wetland conservation, and other purposes

Non-Federal Sponsor Interest:

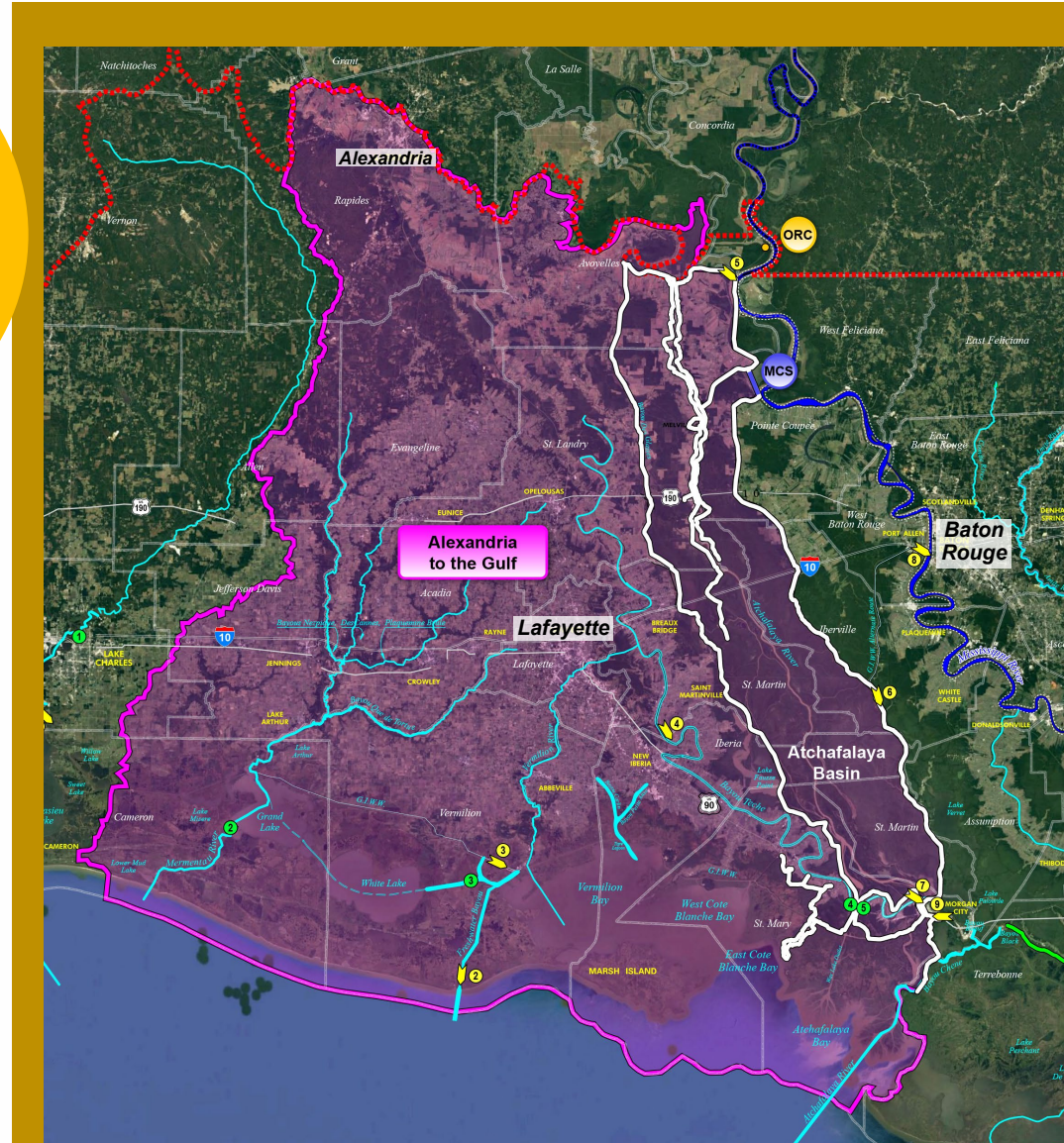
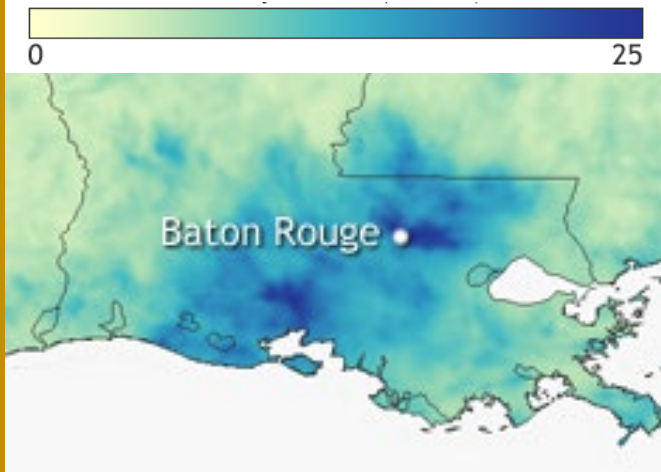
- LaDOTD and CPRA

Study Area:

- 16 Parishes
- 1.23M Residents

THE GREAT FLOOD OF 2016

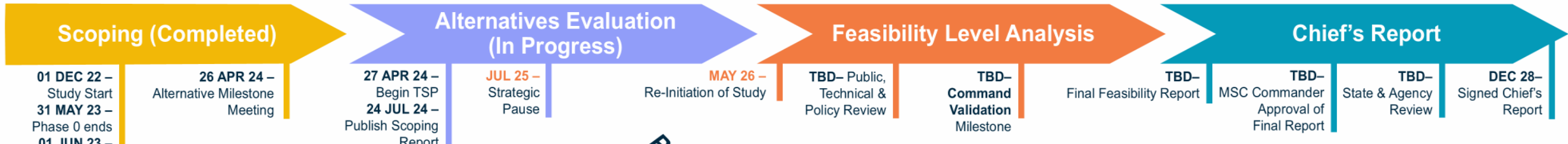
Total Precipitation (Inches)
Aug 8-15, 2016





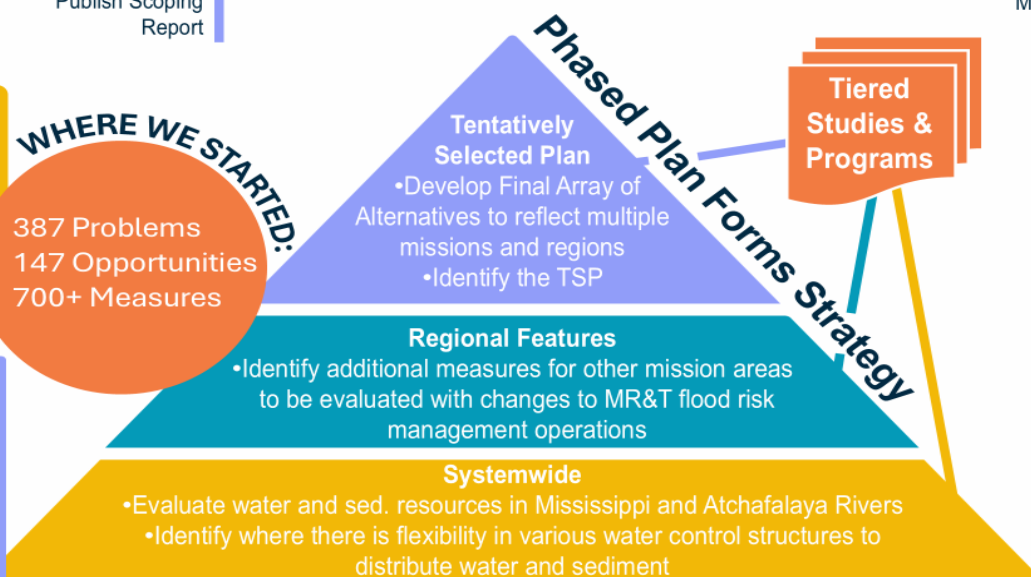
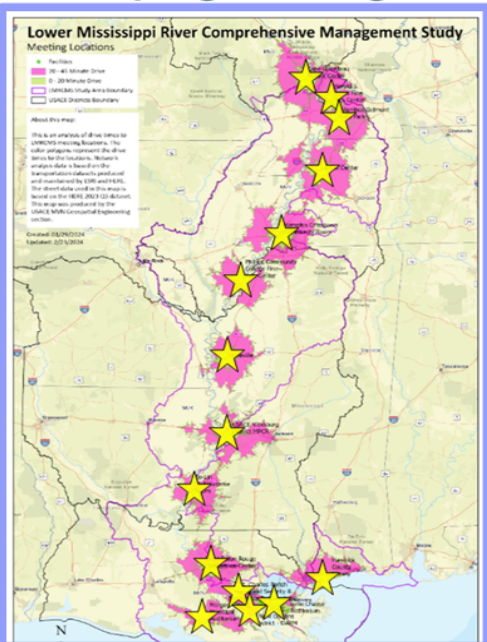
LOWER MISSISSIPPI RIVER COMPREHENSIVE MANAGEMENT STUDY

Study Authority: Water Resources Development Act of 2020 Section 213, WRDA 2022 Section 8343 (100% Federally Funded)



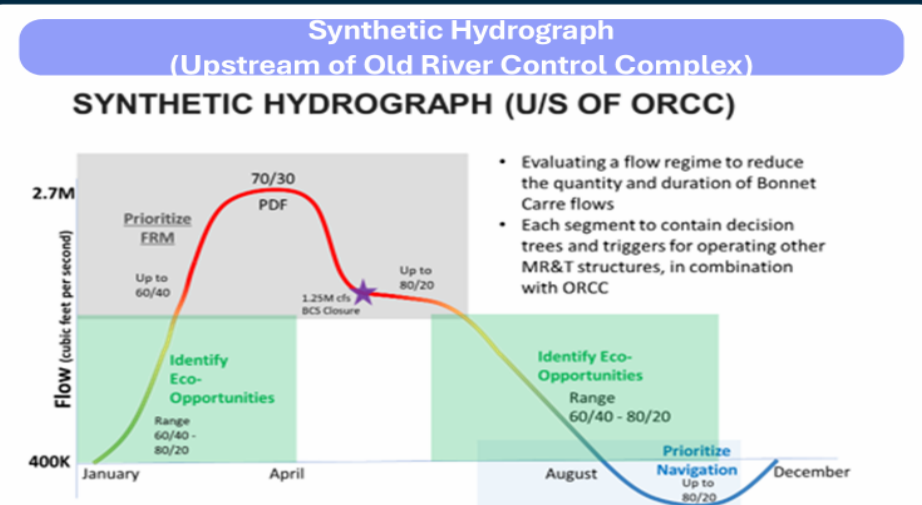
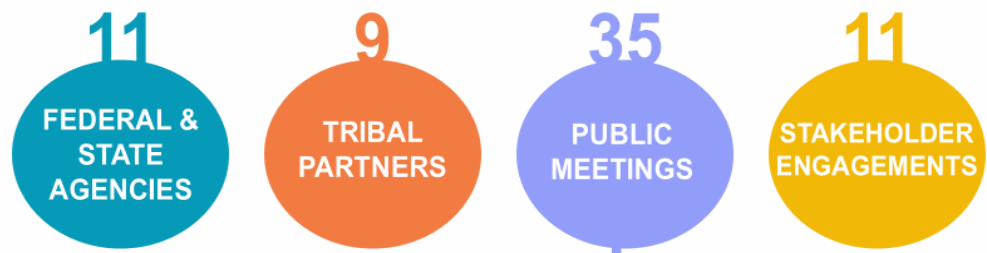
Study Purpose: Identify actionable, spin off, and programmatic recommendations for the comprehensive management of LMR Basin
Study Timeline: Dec 2022 – 2028
Study Cost: \$25 M. Received \$13.5M

Locations of 32 Public Scoping Meetings



Stakeholder Engagement

Implementing strategic engagement with agency partners, tribes, stakeholders, and the public demonstrates our commitment to long-term collaboration and cooperation throughout the Study process.



Current Status:

- Project Re-initiated in May 2026
- Evaluating current project status and identifying next steps
- Developing the Project Schedule in Accordance with USACE RAPID Planning

Products Developed/Completed to date:

- Expanded Inventory of Existing Reports, Models & Data
- Developed a Robust Public Scoping Report
- Completion of the Alternatives Milestone Meeting (AMM)
- Development of the Phased Plan Formulation Strategy
- Initiated Existing Conditions & Future Without Project
- Completed a 12' channel reconnaissance evaluation
- Developed a Sediment Model and completed initial H&H



Section 219 - Environmental Infrastructure Program

- Provides assistance to Non-Federal interests to carryout water-related environmental infrastructure projects.
- Types of Assistance:
 - Planning
 - Engineering and Design
 - Construction
- Types of Projects:
 - Water transmission lines
 - Sewage treatment upgrades
 - Stormwater management systems
- Cost shared 75% Federal/25% Non-Federal



U.S. ARMY



US Army Corps
of Engineers®



KEEP IN TOUCH WITH THE NEW ORLEANS DISTRICT

Latest News, Announcements, Events & Connections



District website

www.mvn.usace.army.mil



Facebook

www.facebook.com/usacenola



Instagram

www.instagram.com/usace_nola



X (Twitter)

twitter.com/usacenola



LinkedIn

Search - US Army Corps of Engineers New Orleans District



U.S. ARMY



US Army Corps
of Engineers®