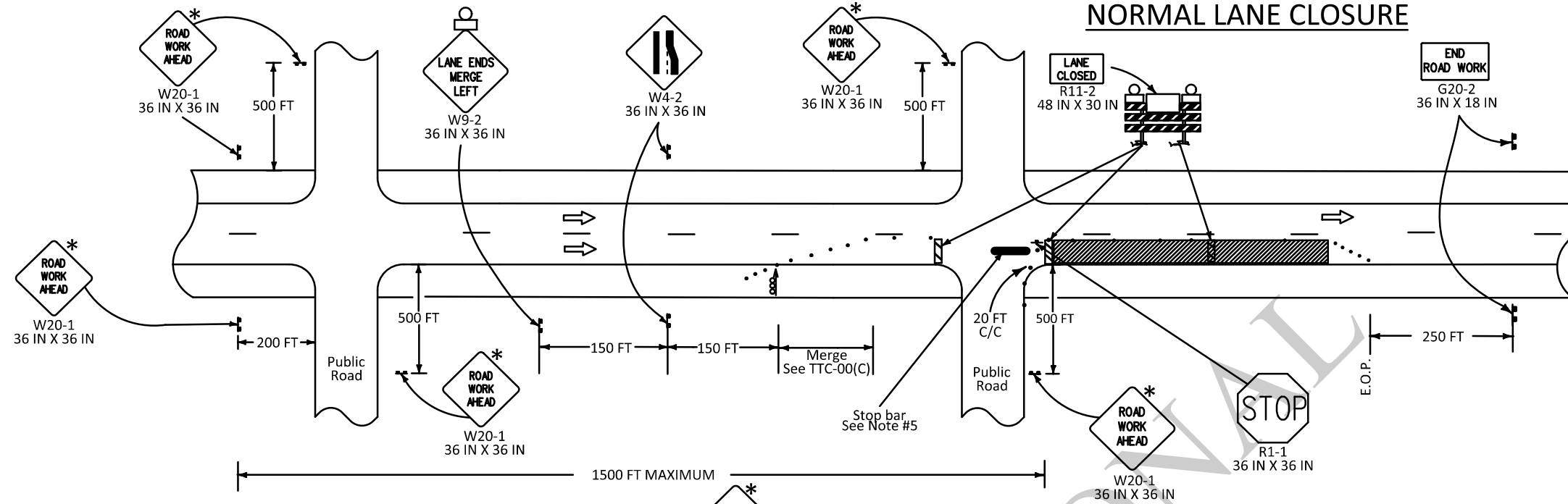


SHEET NUMBER	
DESIGN	G. Dunn
CHECK	B. Boucher
DETAIL	G. Dunn
CHECK	B. Boucher
REVIEW	
SERIES	
APPROVED BY CHIEF ENGINEER	
DATE	3/11/2026
REVISION OR CHANGE ORDER DESCRIPTION	Barricade changed
DATE	6-12-25
NO.	6
STATE OF LOUISIANA	
TEMPORARY TRAFFIC CONTROL	
FOR LANE AND SIDEWALK CLOSURES	
IN URBAN AREAS WITH SPEED LIMIT	
LESS THAN OR EQUAL TO 40 MPH	
TTC-10	
STANDARD PLAN	

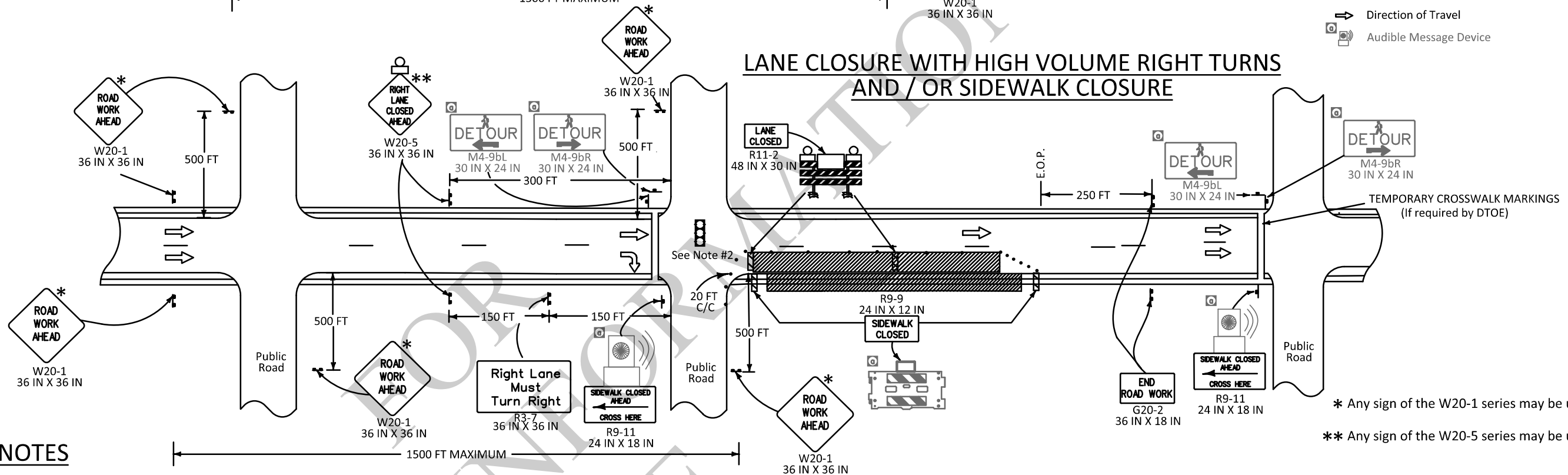
### NORMAL LANE CLOSURE



#### LEGEND

- Traffic Sign
- Channelizing Devices
- Type III Barricades
- Flashing Arrow Board (Type 'C')
- Work Area
- Type B Light
- Direction of Travel
- Audible Message Device

### LANE CLOSURE WITH HIGH VOLUME RIGHT TURNS AND / OR SIDEWALK CLOSURE



\* Any sign of the W20-1 series may be used.  
 \*\* Any sign of the W20-5 series may be used.

#### NOTES

- This sheet shall be used with the Temporary Traffic Control General Notes Sheets TTC-00(A), TTC-00(B), TTC-00(C), TTC-00(D), TTC-00(E), and other Temporary Traffic Control Sheets as appropriate.
- 1) This layout represents the minimum traffic controls require for lane closures in areas with a grid layout and with speed limits of 40 mph and below. This layout illustrates roadwork near a signal or a major intersection with or without sidewalks.
  - 2) If a signal is involved in the construction zone, a specific temporary traffic signal timing and phasing plan for each phase of construction shall be developed.
  - 3) Bicyclists and pedestrians, including those with disabilities, should be provided with access and reasonably safe passage through the TTC zone.
  - 4) The sign height shall be at least 7 feet in business, commercial, and residential areas and also near parking, pedestrians, bicyclists, or other obstructions.

- 5) Place stop bars if work duration is greater than 3 days.
- 6) Place "Road Work Ahead" sign prior to an intersecting alternate route, no more than 1500 feet from the work area.
- 7) When crosswalks or other pedestrian facilities are closed or relocated, temporary facilities shall be detectable and shall include accessibility features consistent with the features in the existing pedestrian facility as defined in the MUTCD.
- 8) A curb ramp shall be used for pedestrian access when curb is 9 inches or taller.

- 9) Audible devices are required for sidewalk closures between existing crossings. Additional audible devices may be needed on "Pedestrian Detour" (M4-9b) signs based on engineering judgment.
- 10) Audible devices are required when existing crossings are removed.

ALL TTC STANDARDS SHOW MINIMUM CONSTRUCTION SIGNING.  
 ALL SITUATIONS SHALL BE REVIEWED AND/OR DESIGNED BY THE ENGINEER.  
 CONTRACTORS ARE RESPONSIBLE FOR COMPLYING WITH ALL TTC STANDARDS.