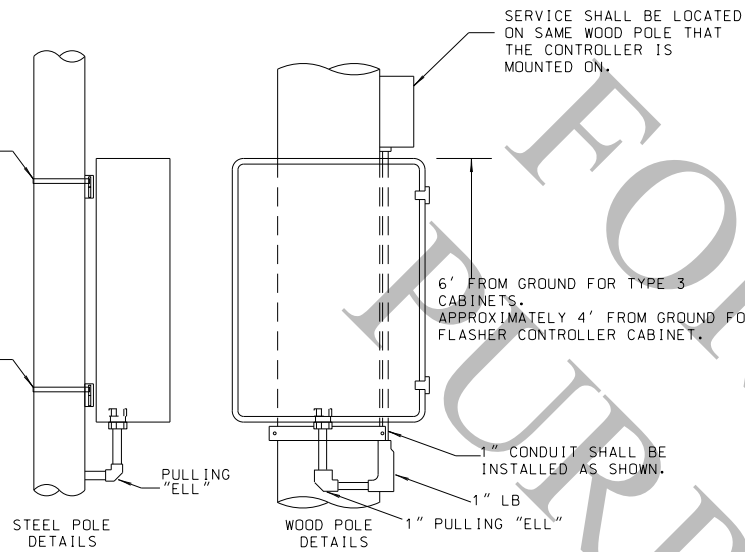


STEEL POLE MOUNTING FOR: SIGNAL CABINET OR FLASHER CABINET

CABINET BRACKET AND 3/4" INCH STAINLESS STEEL BANDING MATERIAL. (FLASHER CABINET AND POLE MOUNTED SIGNAL CABINET)

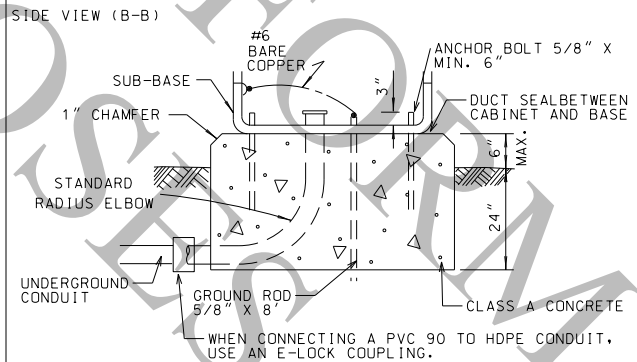
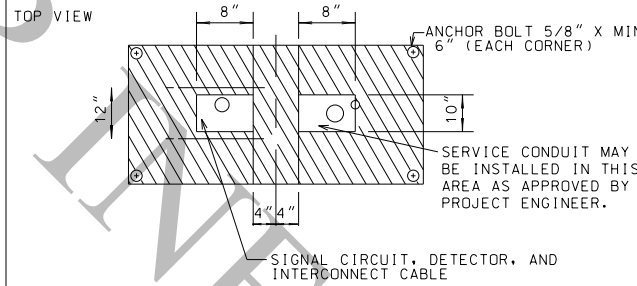
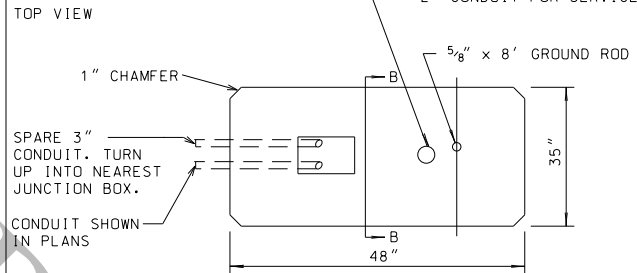
CABINET BRACKET AND 3/4" INCH STAINLESS STEEL BANDING MATERIAL. (POLE MOUNTED SIGNAL CABINET)



- NOTES:
1. WIRE ENTRY INTO CABINET FROM STEEL POLE SHALL BE THROUGH BOSSES PROVIDED ON POLE. PULLING ELLS SHALL BE USED FOR SIGNAL CIRCUIT AND SERVICE CONDUIT. A MYERS HUB ATTACHMENT ON BOTTOM OF CABINET SHALL BE USED FOR SIGNAL CIRCUIT CONDUIT. A MYERS HUB SHALL BE INSTALLED ON CABINET FOR SERVICE ENTRANCE.
 2. ALL SERVICE DISCONNECTS SHALL BE LOCATED ON THE CLOSEST WOOD POLE AVAILABLE FOR SERVICE.
 3. TOP AND BOTTOM OF CABINET SHALL BE ATTACHED TO WOOD POLES USING BRACKETS MOUNTED WITH CONDUIT HUBS, STANDARD BRACKET, AND ATTACHED TO POLE WITH 1/2" X 4" HDG LAG SCREWS.
 4. CONDUIT FOR SIGNAL CIRCUIT SHALL BE 3".
 5. POLE MOUNTED SIGNAL CABINET: A 3' X 5' X 4" CONCRETE PAD SHALL BE POURED NEXT TO THE CONTROLLER CABINET POLE AND SHALL BE ABOVE GROUND LEVEL.
 6. USE A #6 AWG BARE GROUND WIRE TO ATTACH CABINET TO GROUND ROD.
 7. ALL GROUND RODS, REGARDLESS OF FOUNDATION SIZE SHALL PROTRUDE THROUGH THE FOUNDATION AND A MINIMUM OF 4' SHALL BE EMBEDDED INTO THE EARTH

TYPICAL CONTROLLER FOUNDATION

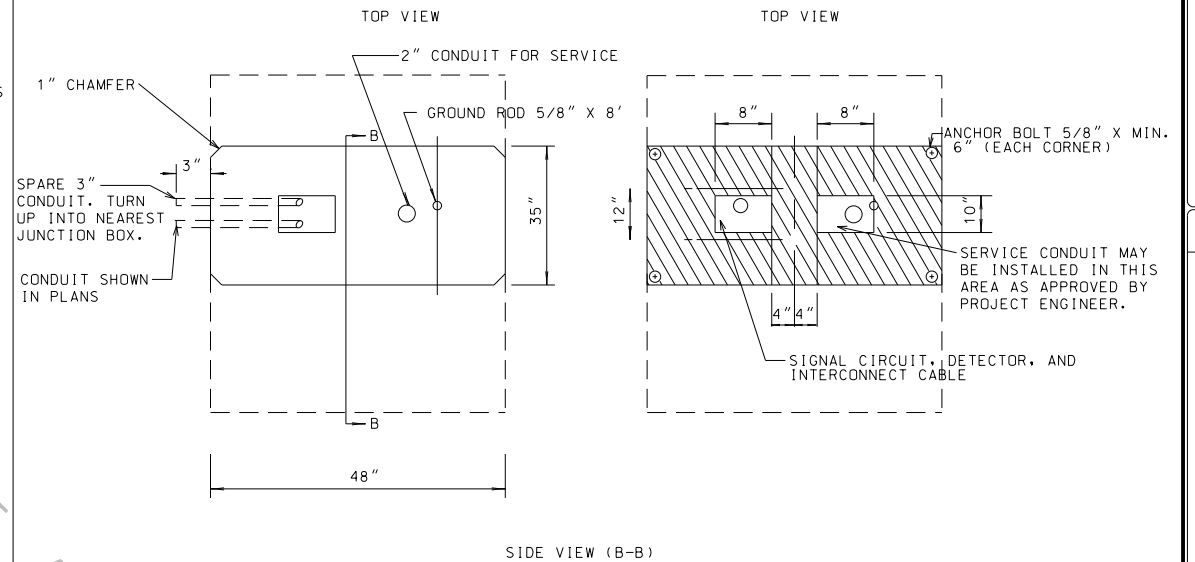
FOR TYPE 5, 6, AND 7 CABINETS (SEE LADOTD TCS# 18)



- NOTES:
1. ALL GROUND MOUNTED CONTROLLERS SHALL HAVE A SPARE 3" CONDUIT RAN 24" BELOW GRADE TO JUNCTION BOX.
 2. ALL EXPOSED CONCRETE EDGES SHALL HAVE A 1" CHAMFER.
 3. ALL CONDUIT, GROUND ROD AND ANCHOR BOLTS SHALL PROTRUDE 2 3/4" MIN. - 3" MAX. ABOVE FINISHED FOUNDATION.
 4. FOUNDATION SHALL BE ORIENTED SO THAT THE DOOR IS FACING AWAY FROM TRAFFIC.
 5. A #6 BARE SOLID COPPER WIRE SHALL BE REQUIRED TO CONNECT BETWEEN GROUND ROD AND GROUND LUG ON PANEL.

ALTERNATE STEP CONTROLLER FOUNDATION

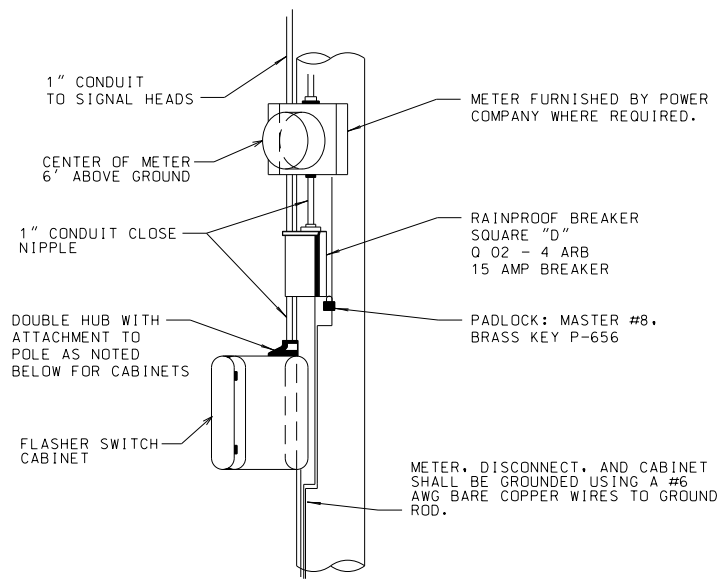
FOR TYPE 6E CABINETS (SEE LADOTD TCS# 18)



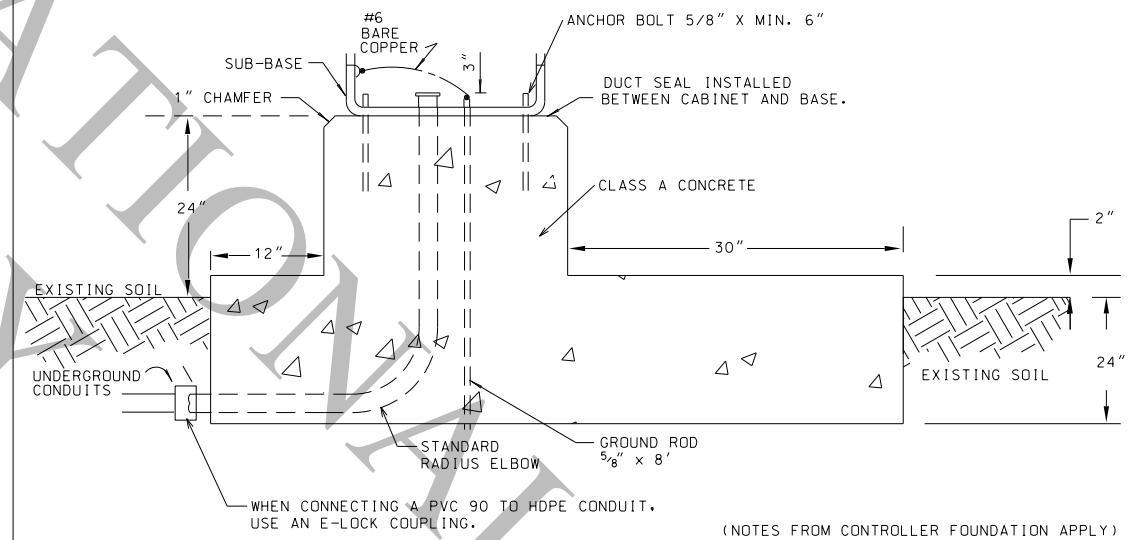
WOOD POLE MOUNTED FLASHER CONTROLLER SWITCH

(6 1/2" x 12" x 16")

NOTE: USED FOR FLASHING HAZARD BEACONS AND CONTINUOUS FLASHING SIGNS. THIS ITEM SHALL BE INCLUSIVE WITH ELECTRICAL SERVICE.



NOTE: ALL EQUIPMENT SHALL BE ATTACHED TO POLE WITH HDG LAG SCREWS.



SHEET NUMBER		PARISH		STATE PROJECT	
DESIGN S. MCCARROLL		CHECK D. LORIO		CONTROL SECTION	
DETAIL S. MCCARROLL		CHECK L. WANG		REVIEW	
SERIES # 14 OF 14		APPROVED BY CHIEF ENGINEER:		DATE: Oct 1, 2025	
NO.		DATE		BY	
REVISION OR CHANGE ORDER DESCRIPTION					



TRAFFIC SIGNAL DETAILS

CONTROLLER MOUNTING AND FOUNDATION DETAILS

TSD-13



STANDARD PLAN