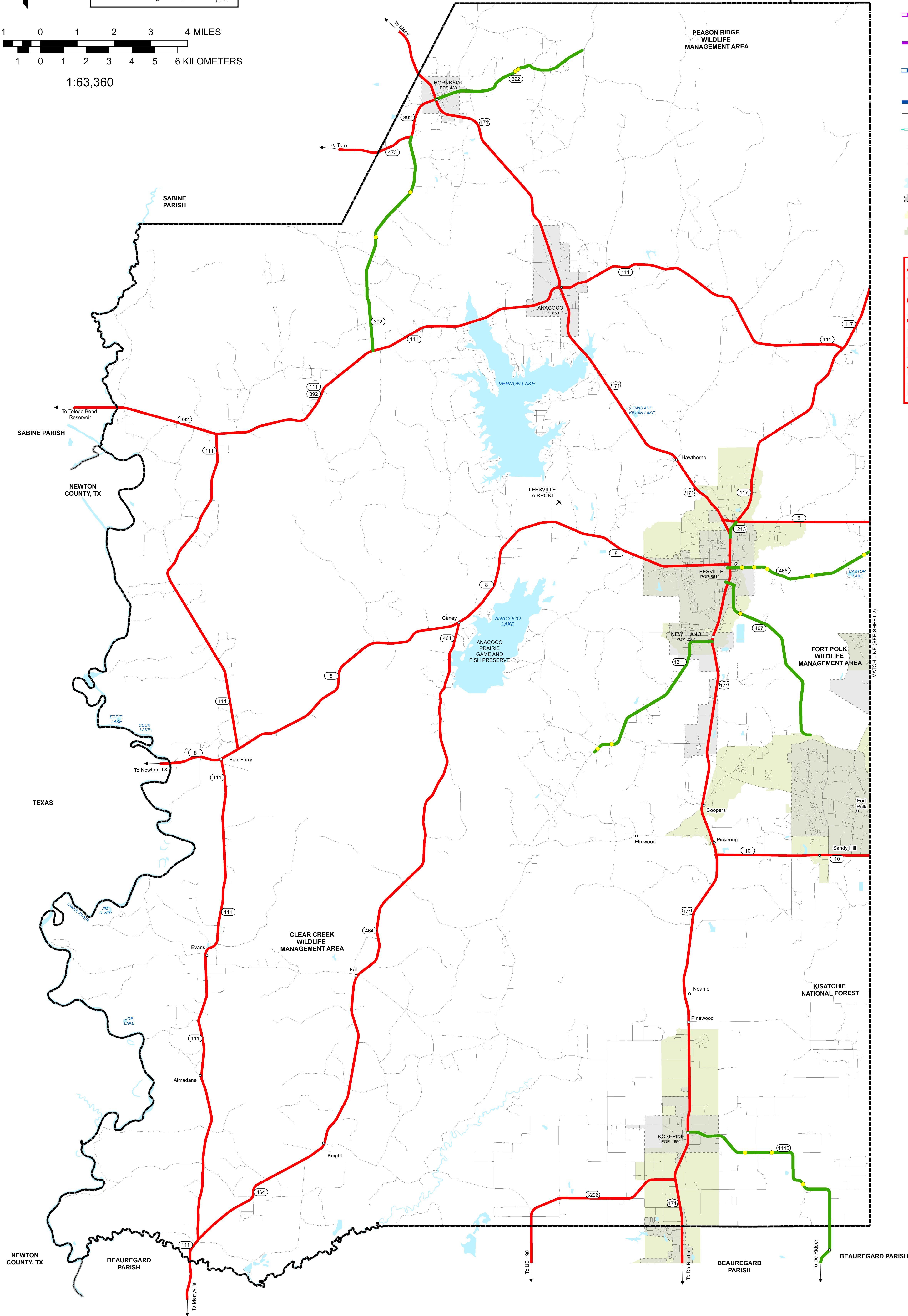


1:63,360

- Existing State Highway System to Remain
- State Highways Proposed for Transfer to Local Government Roadway System
- State Highways Transferred to Local Government Roadway System
- State Highways to be Transferred Under Existing Agreements with Local Government
- - - Local Roads with Existing Agreements for Transfer to State Highway System
- - - Proposed State Highway Construction with Existing Agreements
- - - Local Roads Proposed for Transfer to State Highway System
- - - Proposed State Highway Construction Local Government Roadway System
- State System Ferries
- Bridges Proposed for Transfer
- Movable Bridges Proposed for Transfer
- Water Bodies
- City Limits
- Urbanized Areas
- Urban Areas

**ALL State Highways shown as "Proposed for Transfer to Local Government Roadway System" are being re-evaluated and ALL Right-Size maps are being revised. Please contact the DOTD District for any inquiries concerning the Road Transfer Program.**



**RIGHT-SIZING THE STATE HIGHWAY SYSTEM**  
**VERNON PARISH**  
 WEST SECTION

LOUISIANA  
 MAP UPDATED MARCH 2017  
 POPULATION FROM 2010 CENSUS  
 PREPARED BY THE  
 DEPARTMENT OF TRANSPORTATION AND DEVELOPMENT  
 OFFICE OF MULTIMODAL PLANNING  
 IN COOPERATION WITH THE  
 U.S. DEPARTMENT OF TRANSPORTATION  
 FEDERAL HIGHWAY ADMINISTRATION

INFORMATION PORTRAYED ON THIS  
 MAP REFLECTS THE STATE HIGHWAY  
 SYSTEM AS OF MARCH 2, 2017

THIS MAP HAS BEEN PREPARED BY THE LOUISIANA DEPARTMENT OF TRANSPORTATION AND DEVELOPMENT, OFFICE OF MULTIMODAL PLANNING AND DEVELOPMENT. IT IS THE PROPERTY OF THE U.S. DEPARTMENT OF TRANSPORTATION AND DEVELOPMENT. IT IS NOT TO BE REPRODUCED OR TRANSMITTED IN ANY FORM OR BY ANY MEANS, ELECTRONIC OR MECHANICAL, INCLUDING PHOTOCOPYING, RECORDING, OR BY ANY INFORMATION STORAGE AND RETRIEVAL SYSTEM, WITHOUT PERMISSION IN WRITING FROM THE U.S. DEPARTMENT OF TRANSPORTATION AND DEVELOPMENT. PRINTED COPIES OF THIS MAP ARE AVAILABLE FOR PUBLIC USE AT A NOMINAL COST. PLEASE SEE THE FOLLOWING CONTACT INFORMATION FOR MORE DETAILS: GENERAL FILES - MAP SALES: (504) 388-6400; GENERAL FILES - MAP SALES: (504) 388-6400; BAYOU BOULEVARD, LA 70004-0405; (504) 388-6400. DATA ON THIS MAP IS INTENDED FOR INTERNAL PLANNING USE ONLY. ALTHOUGH THIS DATA HAS BEEN SUBJECT TO MANY RIGOROUS TESTS, ALL WITH EXCELLENT RESULTS, NO WARRANTY IS EXPRESSED OR IMPLIED. THE USER ASSUMES ALL LIABILITY FOR ANY DAMAGE, LOSS, OR INJURY, INCLUDING REASONABLE ATTORNEY'S FEES, ARISING FROM THE USE OF THIS MAP. THE U.S. DEPARTMENT OF TRANSPORTATION AND DEVELOPMENT ASSUMES NO RESPONSIBILITY TO DISTRIBUTE FUTURE MODIFICATIONS OR CORRECTIONS THAT MAY BE MADE. PROJECTION: NAD 83, UTM, Zone 16N. DATUM: North American Datum of 1983. EARTH MODEL: GRS80. SCALE: 1:63,360. DATE: 03/2017. LAYOUT: 03/2017. LITHO: 03/2017. HORIZONTAL DATUM: NORTH AMERICAN DATUM OF 1983.