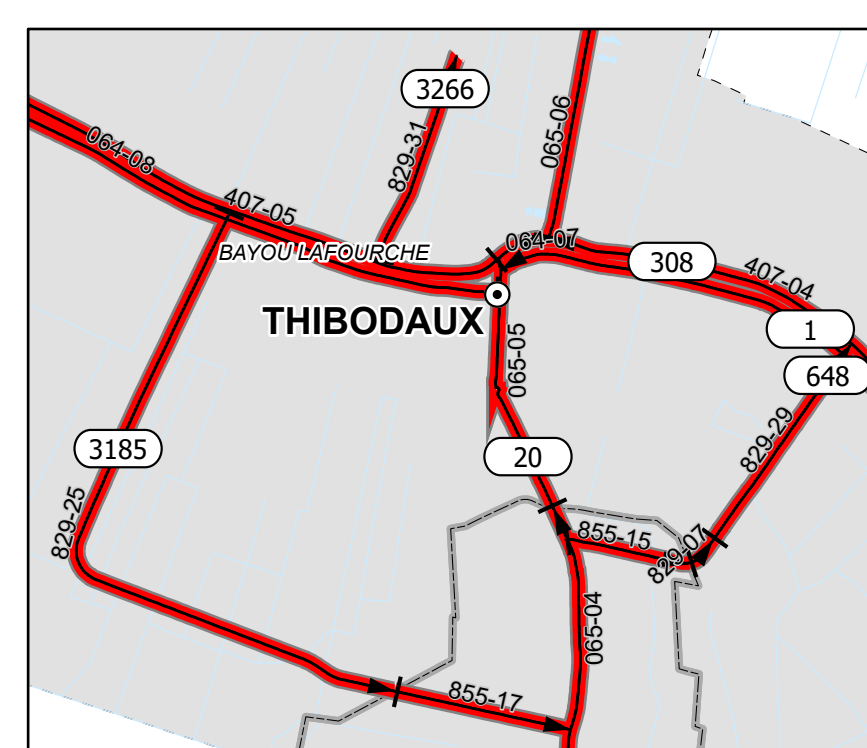
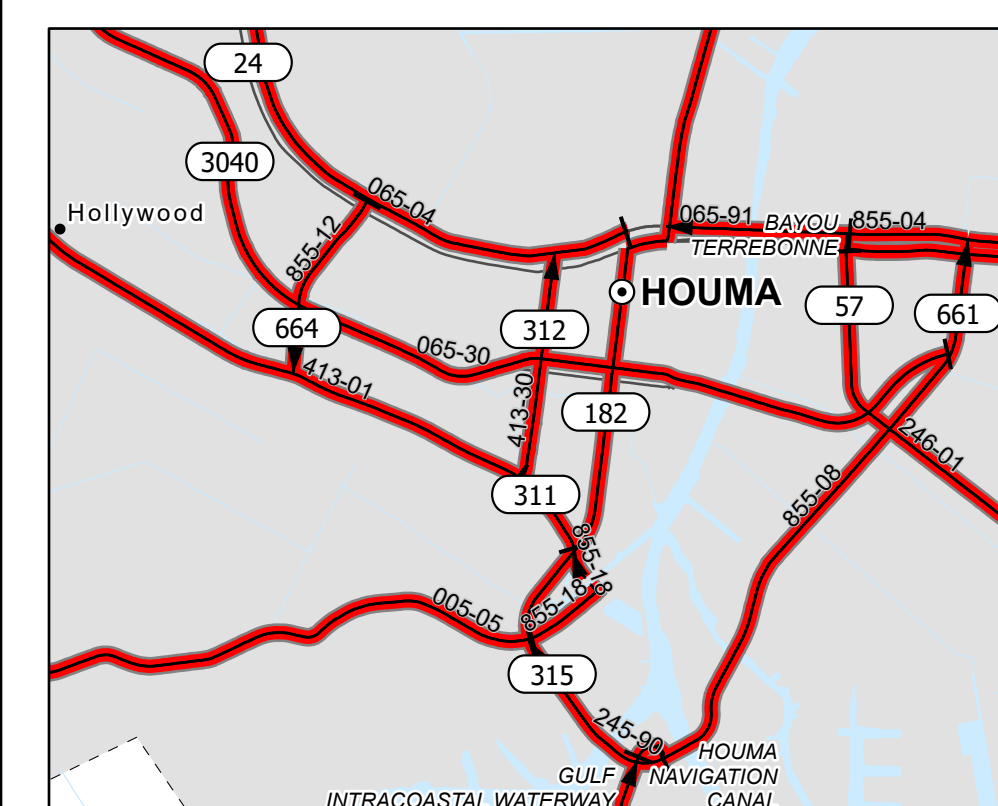


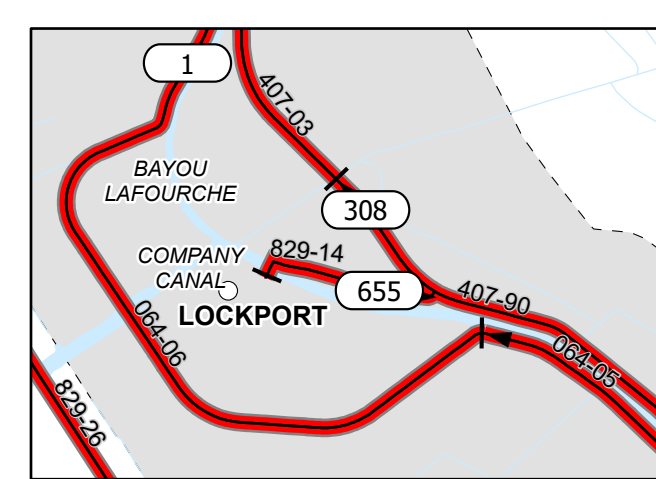
**NEW ORLEANS**



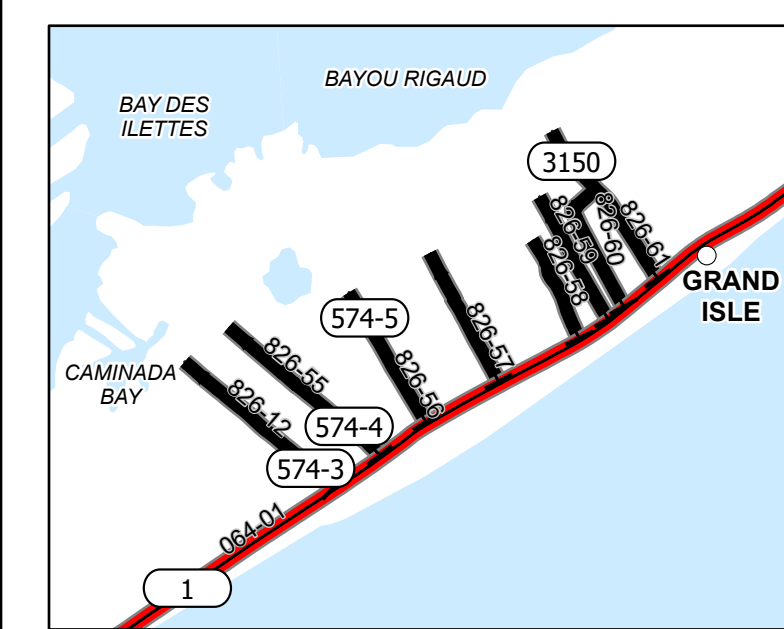
**THIBODAUX**



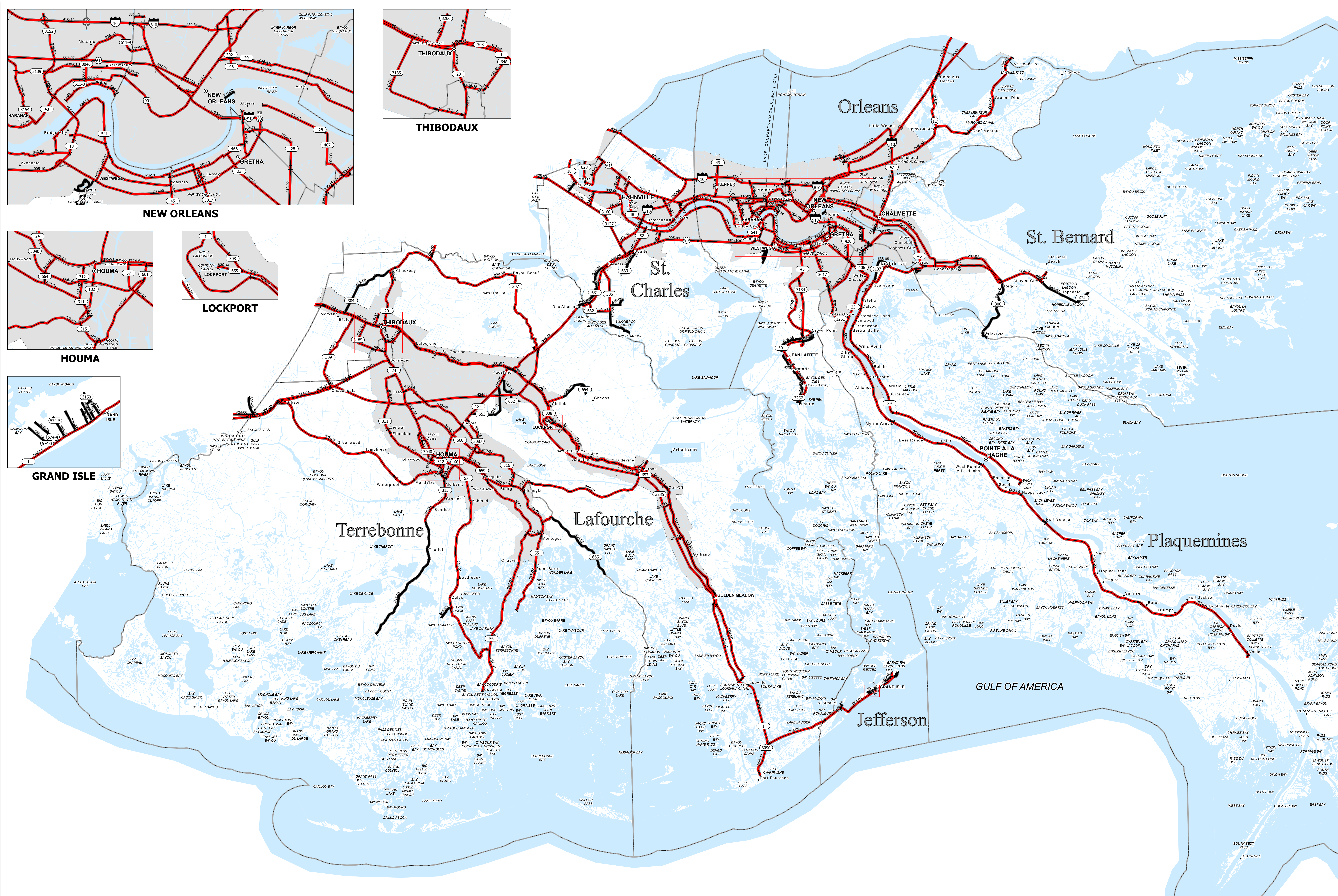
**HOUMA**



**LOCKPORT**



**GRAND ISLE**

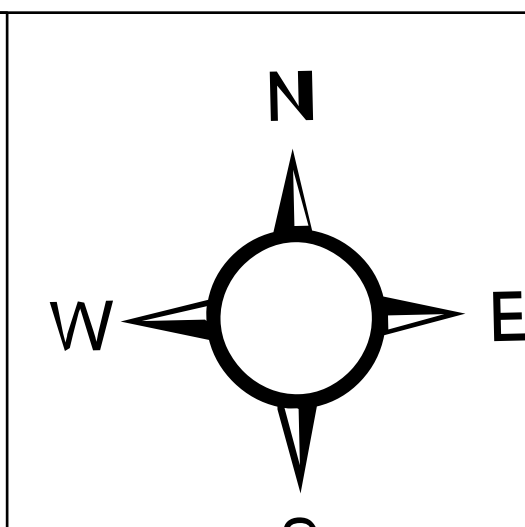
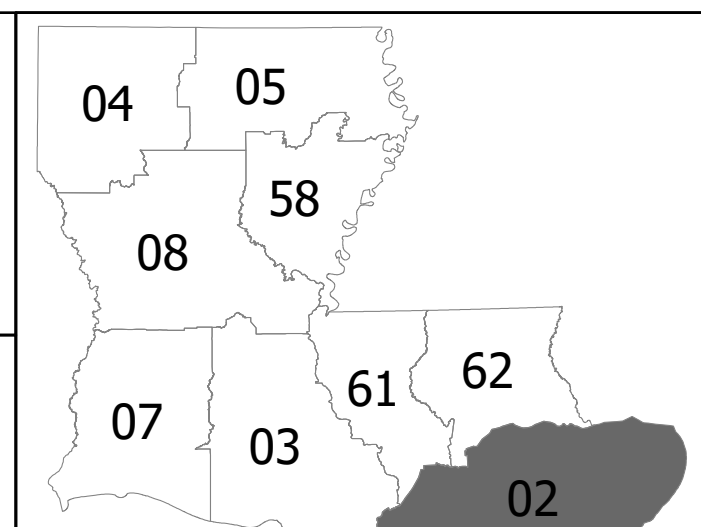


THIS MAP HAS BEEN PREPARED BY THE LOUISIANA DEPARTMENT OF TRANSPORTATION AND DEVELOPMENT OFFICE OF PROJECT DELIVERY - PLANNING IN COOPERATION WITH THE U.S. DEPARTMENT OF TRANSPORTATION - FEDERAL HIGHWAY ADMINISTRATION.

[dotd.la.gov](http://dotd.la.gov)

PRINTED COPIES OF THIS MAP ARE AVAILABLE FOR PUBLIC USE AT A NOMINAL COST. PLEASE SEE THE FOLLOWING CONTACT INFORMATION: DEPARTMENT OF TRANSPORTATION AND DEVELOPMENT SECTION 26, ENTERPRISE SUPPORT SERVICES GENERAL FILES - MAP SALES P.O. BOX 9245 BATON ROUGE, LA 70804-0245 (225) 379-1107 or (225) 379-1169

**SPATIAL REFERENCE INFORMATION**  
NAME: NAD 1983 UTM ZONE 18N METERS  
PROJECTION: TRANSVERSE MERCATOR



**MAP UPDATED: MARCH 2026**

1:190,080 / 1 INCH EQUALS 3 MILES

**EMERGENCY RELIEF FUNDING ELIGIBILITY MAP DISTRICT 02 LOUISIANA**

PREPARED BY THE DEPARTMENT OF TRANSPORTATION AND DEVELOPMENT OFFICE OF PROJECT DELIVERY - PLANNING

**BASEMAP LEGEND AND SYMBOLOLOGY**

- PARISH SEATS
- MUNICIPALITIES
- COMMUNITIES
- ⬆ INTERSTATE HIGHWAY
- ⬆ U.S. HIGHWAY
- ⬆ STATE HIGHWAY
- ⬆ CONTROL SECTIONS AND NUMBERS
- ⬆ FERRY BOATS
- ⬆ OTHER CONNECTORS
- ⬆ PROPOSED ROUTES
- ⬆ PARISH BOUNDARIES
- ⬆ URBAN AREAS
- ⬆ URBANIZED AREAS
- ⬆ WATER

**EMERGENCY RELIEF ROADWAY SYMBOLOLOGY**

- FHWA ELIGIBLE
- FEMA ELIGIBLE