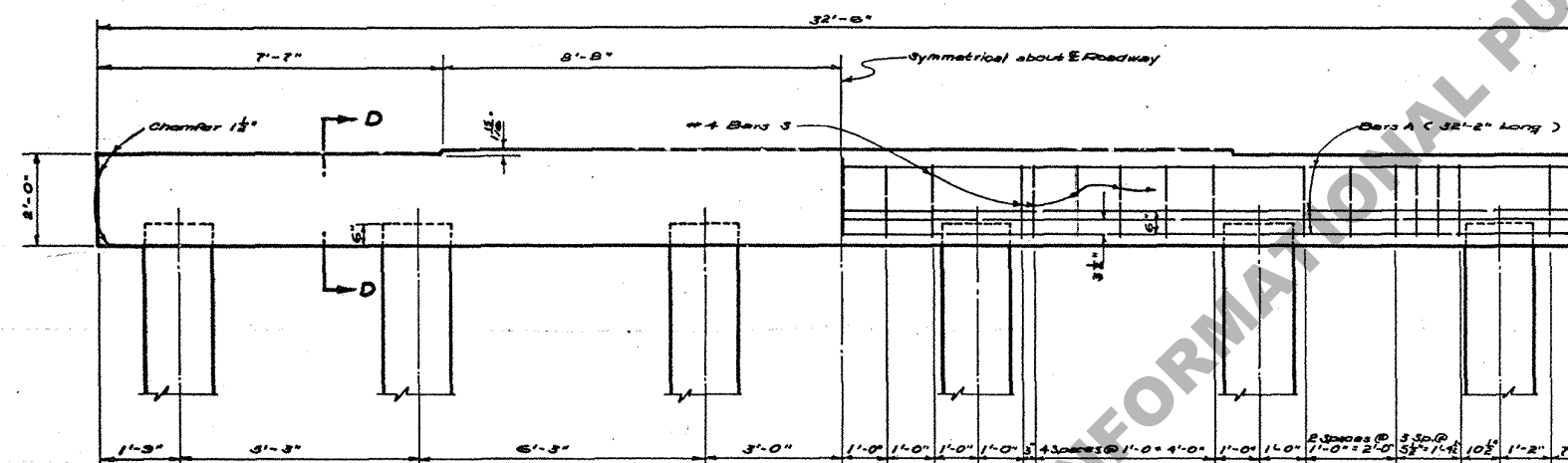


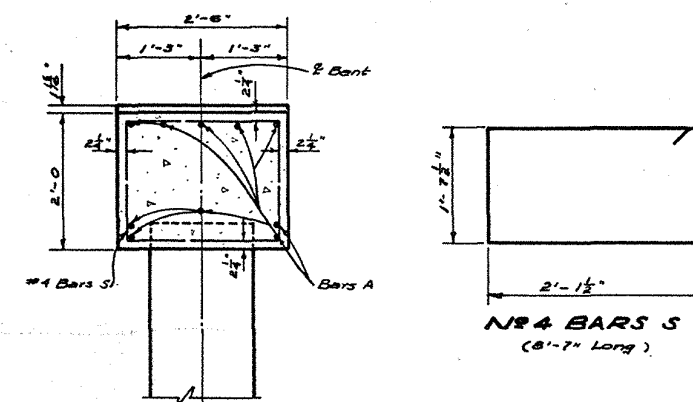
5 PILE BENT

SPAN	5 PILES				6 PILES				SPAN
	SIZE OF "A" BARS	CLASS OF CONC.	DEF. REINR. STEEL	AV. PILE LOAD	SIZE OF "A" BARS	CLASS OF CONC.	DEF. REINR. STEEL	AV. PILE LOAD	
FT.	FT.	CU. YDS.	LBS.	TONS	FT.	CU. YDS.	LBS.	TONS	FT.
50	#10	6.07	1613	31.9	#6	6.03	1037	26.5	50
55	#10	6.07	1613	34.4	#9	6.03	1272	28.6	55
60	#10	6.07	1613	36.9	#9	6.03	1272	30.6	60

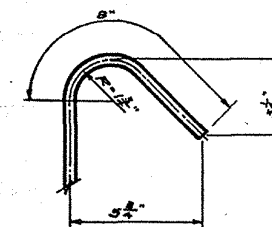
* Quantities Computed Assuming 18" Precast Piles



6 PILE BENT



SECTION D-D



135° HOOK FOR N# 4 BARS

INTERMEDIATE BENTS

STANDARD PLAN
 PRECAST CONCRETE PILE BENTS
 FOR 50', 55' & 60' COMPOSITE WELDED SPANS
 LIVE LOAD H20-S16-44 (MODIFIED)
 28'-0" ROADWAY 1'-6" SIDEWALKS
 DATE: March 5, 1957

STATE OF LOUISIANA
 DEPARTMENT OF HIGHWAYS

DESIGNED <i>Briggs</i>	DETAILED <i>Briggs</i>	TRACED <i>E. G. Kelly</i>
CHECKED <i>Brantley</i>	CHECKED <i>Brantley</i>	CHECKED <i>Brantley</i>
DATE	DESCRIPTION	BY
REVISIONS		
IN CHARGE OF		BRIDGE DESIGN SECTION