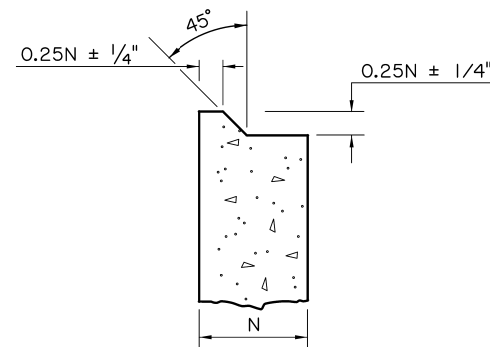


GENERAL NOTES:

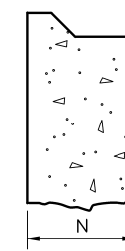
- THIS STRUCTURE MEETS ALL DOTD HYDRAULIC PERFORMANCE CRITERIA WHEN USED IN ACCORDANCE WITH THE DOTD HYDRAULICS MANUAL AND ALL DOTD HYDRAULIC DESIGN POLICIES.
- PROVIDE PRECAST UNITS AS THE LOWER PORTION OF A COMPOSITE STRUCTURE. PROVIDE CAST-IN-PLACE CONCRETE (SEE APPROPRIATE STANDARD PLAN FOR REQUIRED REINFORCING AND DIMENSIONS) FOR THE TOP 1'-6" OF THE STRUCTURE AS FOLLOWS:
 - CB-01, CB-02, CB-04, CB-05, AND MANHOLES MAY BE FULLY PRECAST IF THE STRUCTURES ARE NOT EXPOSED TO TRAFFIC LOADS; ELEVATIONS MUST BE FIELD VERIFIED PRIOR TO FABRICATION.
 - CB-06, CB-07, CB-08, AND CB-09 STRUCTURES MUST HAVE THE TOP 18" CAST-IN-PLACE; ELEVATIONS MUST BE FIELD VERIFIED PRIOR TO FABRICATION.
- DESIGN IS TO BE IN ACCORDANCE WITH THE AASHTO LRFD BRIDGE DESIGN SPECIFICATIONS, EIGHTH EDITION, 2017, AND THE LATEST LOUISIANA STANDARD SPECIFICATIONS FOR ROADS AND BRIDGES.
- FINISH CAST-IN-PLACE CONCRETE IN ACCORDANCE WITH OTHER STANDARD PLANS AND 805.
- FORM PIPE OPENINGS ONLY AS REQUIRED FOR INTERSECTING PIPES. PROVIDE OPENING DIMENSIONS TO ACCOMMODATE PIPE DIAMETER AND SKEW ANGLE. PROVIDE OPENING DIMENSION THAT IS 4±1/2 INCH LARGER THAN OUTSIDE PIPE DIMENSION.
- RESILIENT CONNECTORS OR CONCRETE COLLARS ARE REQUIRED FOR CONNECTIONS OF ALL PIPE SIZES (EXCEPT YARD DRAIN PIPE AND UNDERDRAINS) WITH COST TO BE INCLUDED IN THE COST OF THE PRECAST STRUCTURE.



**JOINT DETAIL A
PRECAST/PRECAST**

1. SEAL AND WRAP JOINT IN ACCORDANCE WITH 702.3.020

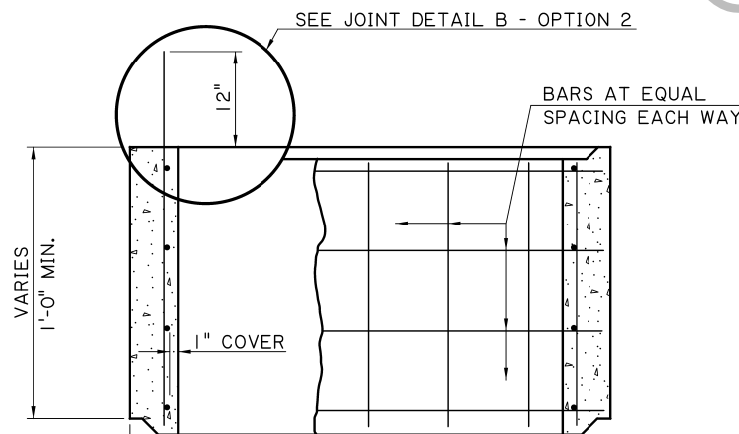
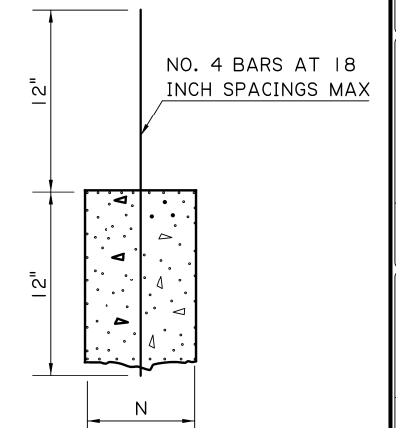
USE DIMENSIONS FROM JOINT DETAIL "A"



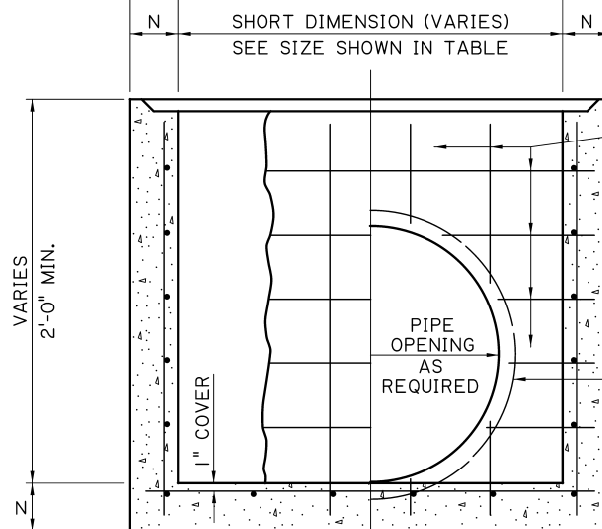
**JOINT DETAIL B - OPTION 1
CAST-IN-PLACE/PRECAST**

**JOINT DETAIL B - OPTION 2
CAST-IN-PLACE/PRECAST**

IN OPTIONS 1 AND 2, COAT PRECAST CONCRETE JOINT SURFACE AND A MAXIMUM OF 2 INCHES OF REINFORCING STEEL WITH TYPE V, GRADE 2 OR GRADE 3 EPOXY RESIN CONFORMING TO 1017. APPLY EPOXY RESIN AND PLACE CONCRETE IN ACCORDANCE WITH MANUFACTURER'S RECOMMENDATIONS.



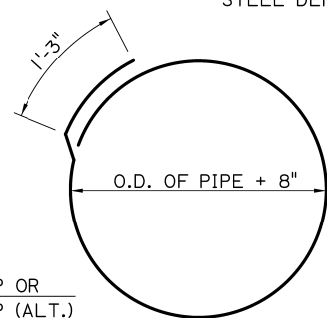
OPTIONAL RISER UNIT



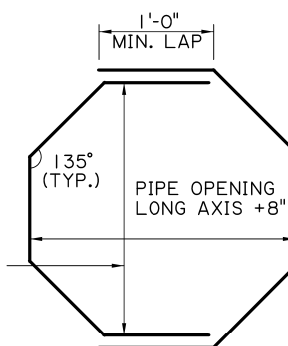
**BASE UNIT
SECTION B-B**

Δ #4 HOOP MAY BE USED WHEN PIPE IS CIRCULAR AND CONNECTS TO THE CATCH BASIN AT +/- 90 (DEGREE) ANGLE. #4 HOOP (ALT.) SHALL BE USED FOR NON-CIRCULAR (ELLIPTICAL) PIPES AND ALL PIPES THAT ENTER THE CATCH BASIN AT A SKEWED ANGLE.

PIPE OPENING SHORT AXIS +8"



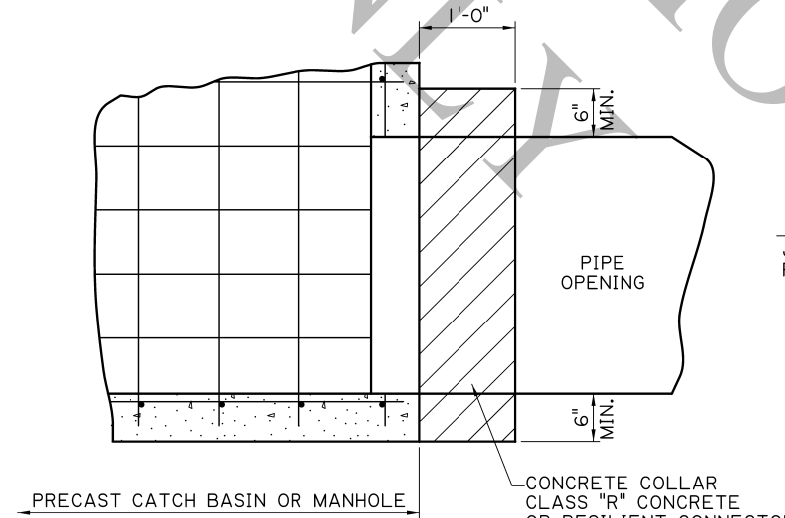
Δ#4 HOOP



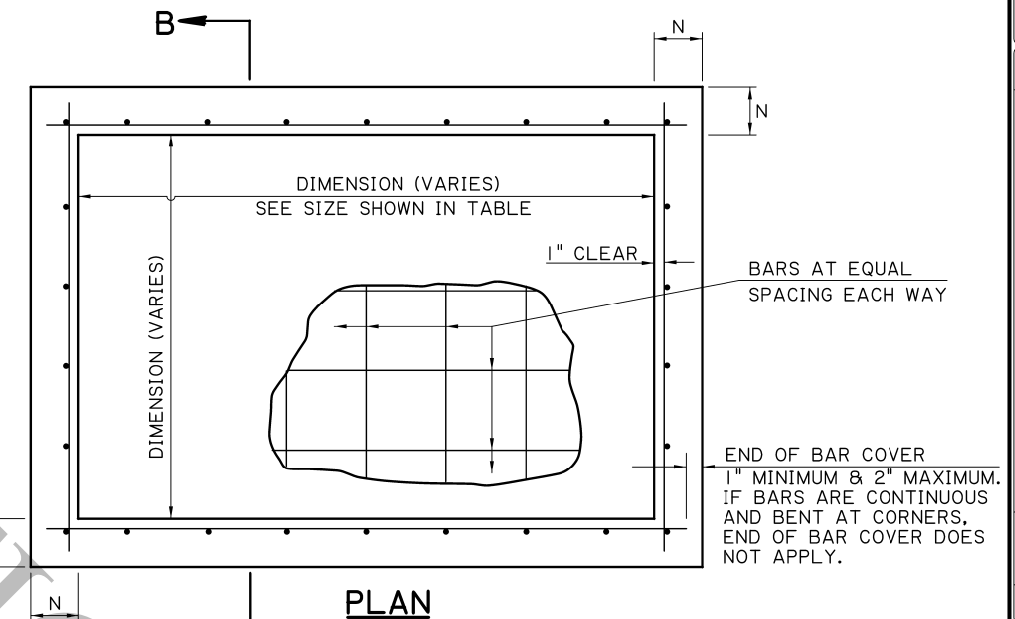
Δ#4 HOOP (ALT.)

MAXIMUM HEIGHT N		4' MAX. DIMENSION			6' MAX. DIMENSION			8' MAX. DIMENSION			10' MAX. DIMENSION		
		TYPICAL SIZES 3'X3' 4'X4'			TYPICAL SIZES 6'X4' 6'X6'			TYPICAL SIZES 8'X4' 8'X6' 8'X8'			TYPICAL SIZES 10'X4' 10'X6' 10'X8' 10'X10'		
FT.	IN.	BAR SIZE	SPAC.* IN.	As IN ² /FT.	BAR SIZE	SPAC.* IN.	As IN ² /FT.	BAR SIZE	SPAC.* IN.	As IN ² /FT.	BAR SIZE	SPAC.* IN.	As IN ² /FT.
8	4	4	6	0.40	4	8	0.30	4	5.5	0.44	5	5.5	0.68
8	6	4	9	0.27	4	6	0.40	5	5	0.74	5	3.25	1.14
14	6	4	9	0.27	4	6	0.40	5	5	0.74	5	3.25	1.14
20	6	4	7	0.34	4	4.5	0.53						

○ OTHER SIZES ARE ACCEPTABLE AS LONG AS THE DIMENSIONS DO NOT EXCEED THE MAXIMUM DIMENSIONS.
 * BAR SPACING APPLIES TO BOTH DIRECTIONS AND AT ALL LOCATIONS.
 ☒ BAR SIZES AND SPACING MAY DIFFER FROM VALUES SHOWN, BUT THE AREA OF STEEL (A_s) SHALL BE EQUAL TO OR GREATER THAN VALUE SHOWN, AND BAR SPACING SHALL NOT EXCEED 1.5 TIMES THE WALL THICKNESS. THE AREA OF STEEL (A_s) MAY BE PROVIDED WITH STEEL DEFORMED WELDED WIRE FABRIC.



PIPE CONNECTION DETAIL



PLAN

CAST-IN-PLACE SECTION 1'-6" MINIMUM (SEE NOTE 2)

JOINT DETAIL "B"
JOINT BETWEEN CAST-IN-PLACE AND PRECAST

FLOWLINE OF PIPE TO BE AS SHOWN ON PLAN/PROFILE SHEETS

**ELEVATION
TYPICAL COMPOSITE STRUCTURE**

NOTE:
CAST-IN-PLACE UNIT WALLS MAY BE THICKER THAN PRECAST UNIT WALLS.

JOINT DETAIL "A"
JOINT BETWEEN PRECAST UNIT

ADJUST FLOWLINE OF BASE UNIT WITH CLASS "R" CONCRETE

SHEET NUMBER	
PARISH	
CONTROL SECTION	
STATE PROJECT	
DESIGN CHECK	
DETAIL CHECK	
REVIEW	
SERIES #	1 OF 1
APPROVED BY CHIEF ENGINEER	
DATE	10/11/2025
REVISION OR CHANGE ORDER DESCRIPTION	
NO.	
DATE	
PRECAST CATCH BASINS AND MANHOLES	
PC-01	
STANDARD PLAN	